

Shipping & Ports Organisation

|   |   |
|---|---|
| Didar Street<br>Tehran, Iran  |   |
| Architects  | Herampey Consulting Engineers / MM Mahmoudi Tehran, Iran  |
| Clients   | Port & Maritime Organisation, Iran<br>Tehran, Iran  |
| Commission  | 1999  |
| Design  | 1999 - 2000   |
| Construction  | 2000 - 2004   |
| Occupancy   | 2004  |
| Site  | 4,000 m²  |
| Ground floor  | 2,200 m²  |
| Total floor   | 18,000 m²   |
| Costs   | 10,718,000 USD  |
| Programme   | The project comprises two buildings: a 14 storey office block with three floors of underground parking and services and a low-rise public facility with auditorium that takes its form from the prow of a ship. The steel structure and lightweight aluminium cladding are resistant to earthquake damage and large areas of glazing frame spectacular views of Tehran. Peripheral access routes acknowledge future plans for the site and vertical circulation and servicing ensures efficient use of space. These are zoned to the west where natural light is most poor, which also allows for flexible, open-plan offices to encourage interaction between employees. |
| Building Type Official & Administration Facilities<br>2010 Award Cycle 3629.IRA |   |



AmphiTheater



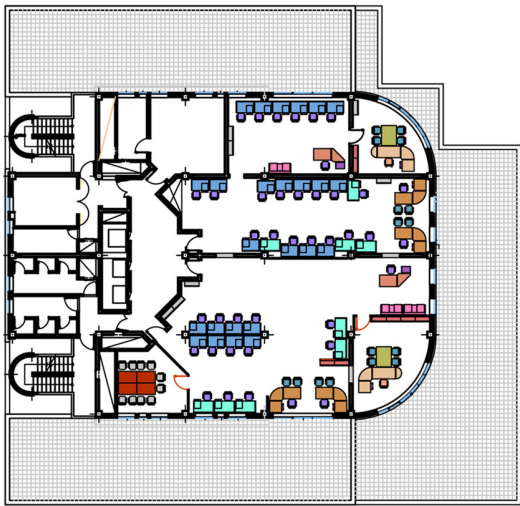
Office



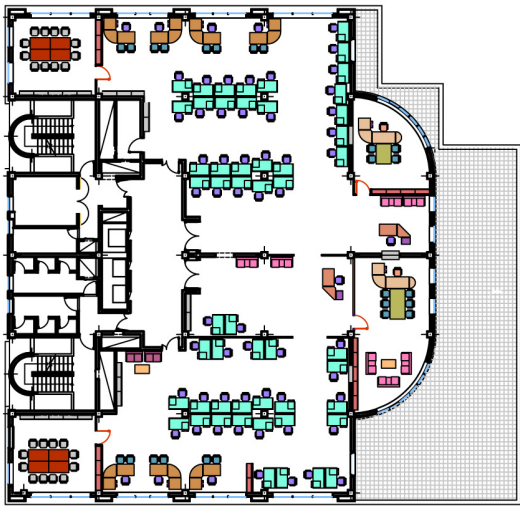
Manager Office



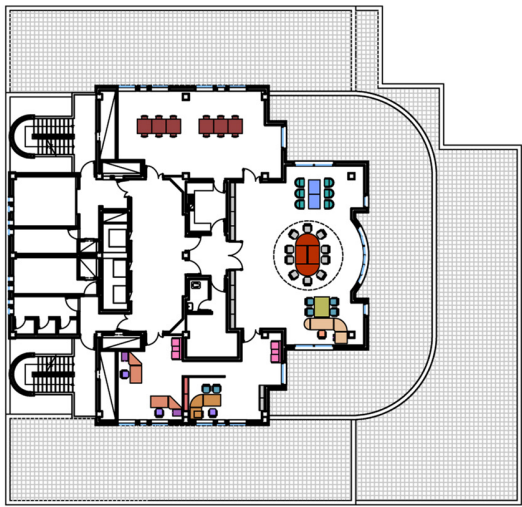
Office



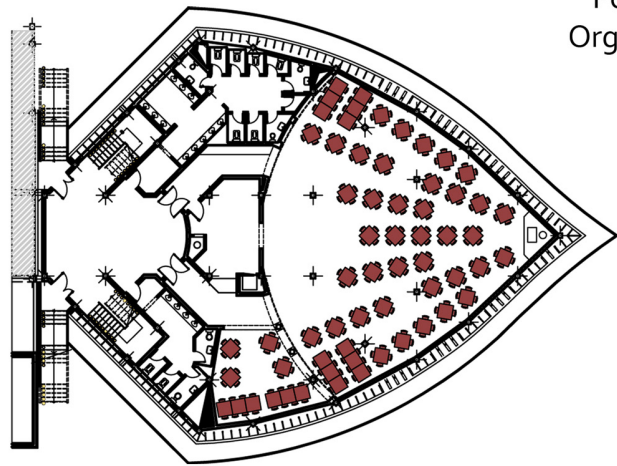
6th.FLOOR



5th.FLOOR



13th.FLOOR



-1th.FLOOR



Port and Maritime  
Organization Building  
CODE: 3629.IRA



Scale : 1.500



Lobby

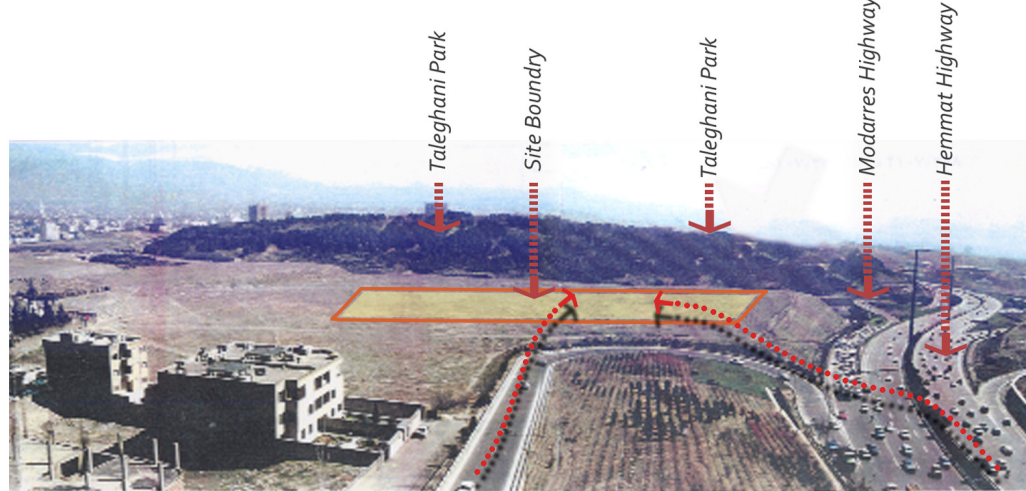


North view of Tehran from 13th.Floor





*West Elevation*



*The Site of Project before Construction*



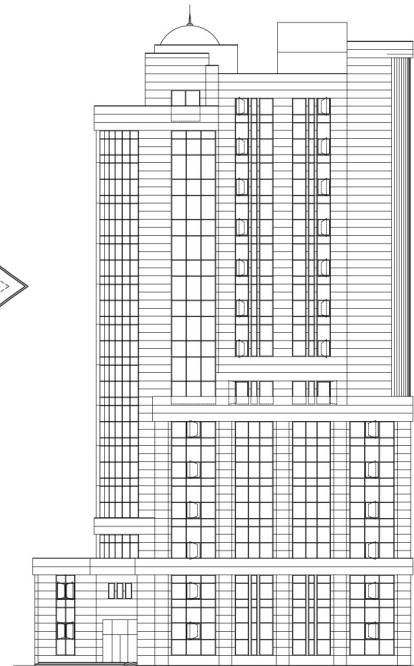
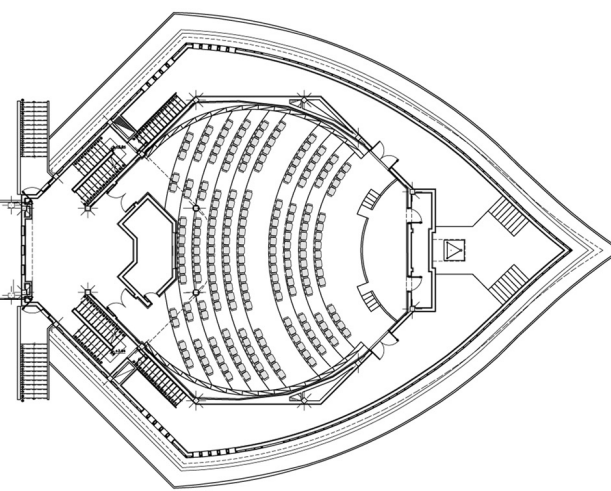
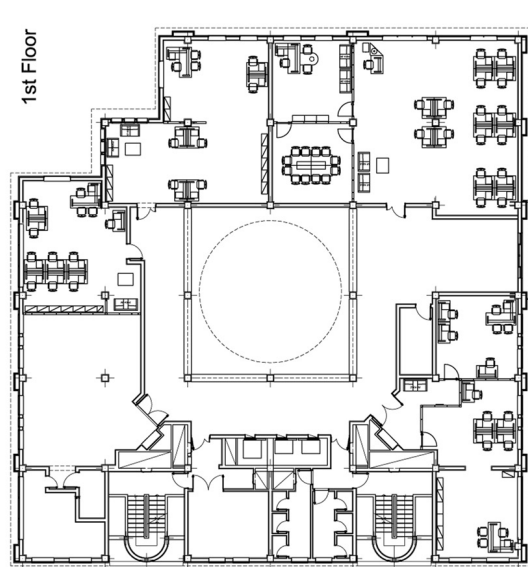
*North Elevation*



*North Elevation*



*East Elevation*



First Floor



Port and Maritime  
Organization Building  
CODE: 3629.IRA

Main Elevation



*West Elevation*



*South Elevation*



*South Elevation*



*South Elevation*



*Detail of North Elevation*



*East Elevation*



*North Elevation*