

Mewah Oils Headquarters

Pulau Indah Industrial Park, Port Klang  
(Westport)  
Selangor Darul Ehsan, Malaysia

Architects	T R Hamzah & Yeang Sdn Bhd / Kenneth Yeang Ampang - Selangor, Malaysia
Clients	Mewah Oils Sdn Bhd Port Klang, Malaysia
Commission	2000
Design	2000 - 2003
Construction	2001 - 2004
Occupancy	2004
Site	n.a.
Ground floor	48,145 m²
Total floor	19,258 m²
Costs	7,140,367 USD
Programme	The key feature of this headquarters building is its continuous, ramped internal garden atrium adjoining a water cascade. The luxuriant garden functions as the building’s lungs, enhancing the indoor air quality, while the water feature acts as a cooling agent. At the same time, the atrium operates as a passive-mode (naturally ventilated) system with the capacity to switch to a mixed-mode system when required. In terms of programme, the project consists of a four-storey office block, a three-storey automated warehouse space and a larger processing and packing plant (Mewah manufactures palm-oil products).



Mewah Oils Headquarters, Selangor Darul Ehsan  
Design Concept

The Mewah Oils Headquarters in Pulau Indah Industrial Park, Port Klang, Selangor,Malaysia is for Singapore-based company involved in the production of palm-oil products and speciality fats. The building comprises of a four-storey office behind a four-storey processing and packing plant, and a three storey, 32-meter high volume automated warehousing space.

The design approach to an otherwise ordinary industrial building is to separate the flexible programme (ie.office administration) from the less flexible spaces (ie.warehouses, processing plant). Hence the massive warehouse forms the backdrop to the extruded form of the office space which is raised over the main drop-off entrance to the building.

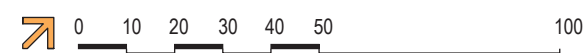
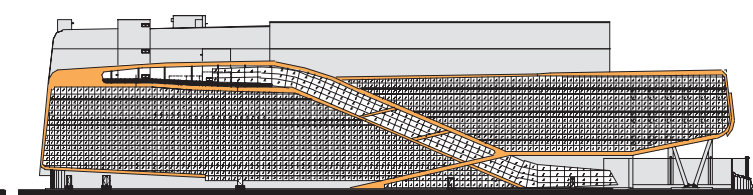
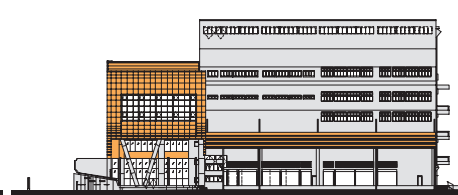
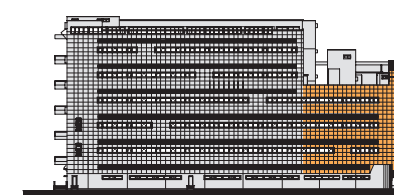
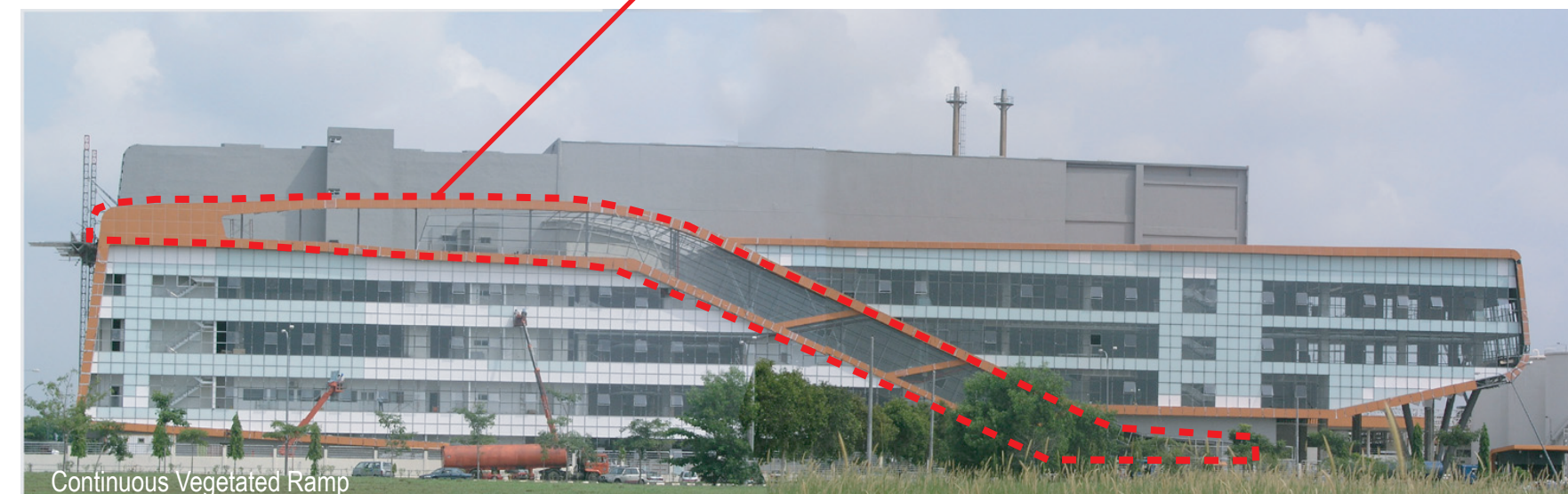
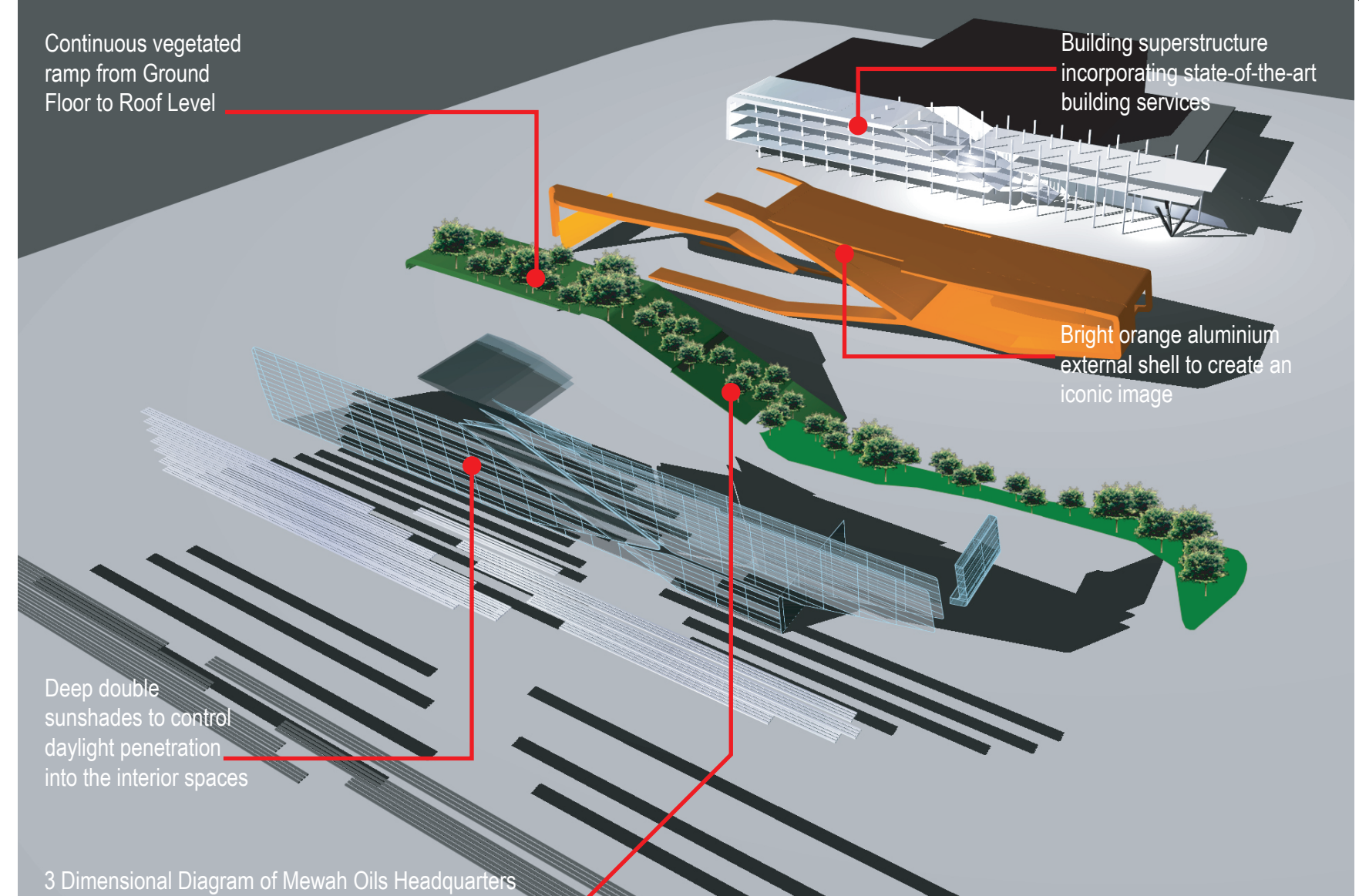
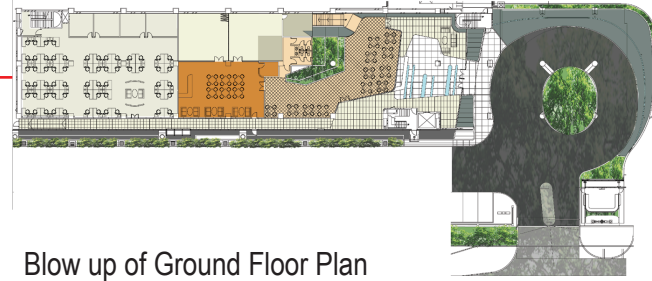
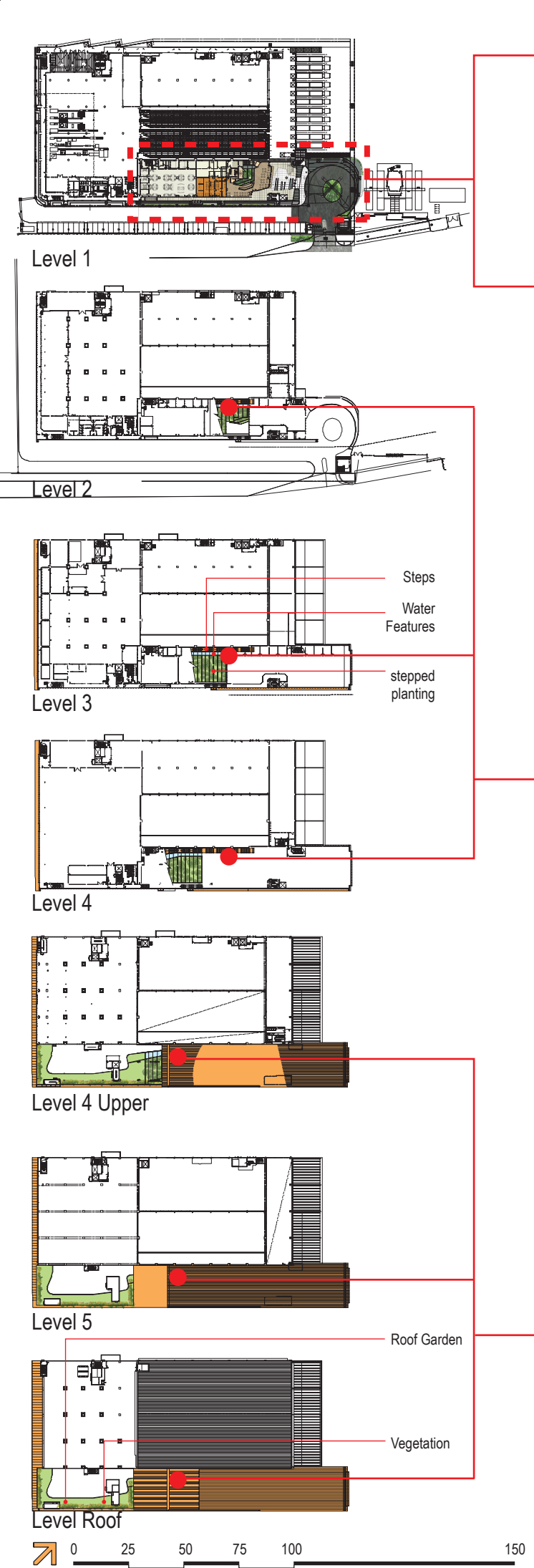
The key feature of the building is a continuous-ramped internal garden with adjoining water feature and a feature staircase which connects the ground floor to the roof-top terrace. Upon entering the building, this ramped garden is immediately viewed in its entirety as a 5-storey high atrium of stepped planting which is naturally ventilated by celestories that open out to the sky gardens at the roof.

Ecological Design Features

The key feature is as continuous internal vegetated ramp adjoining a cascading watercourse and a large linear staircase, with terraces and cafeteria below. The thickly-landscaped stair displays a variety of tropical plants increases the biodiversity of the site (as an ecological strategy), while the gentle flow of water generates a relaxed ambience to both visitors and users of the building. The plants are irrigated by recycled water, gathered from the external rainwater collectors and the sloping atrium space is both passive in its natural ventilation, low energy mode, but is also designed to switch to a mixed-mode system, when required by the indoor climate.

Though the process of passive evaporation, the water-cascade functions as a cooling agent for the atrium space.



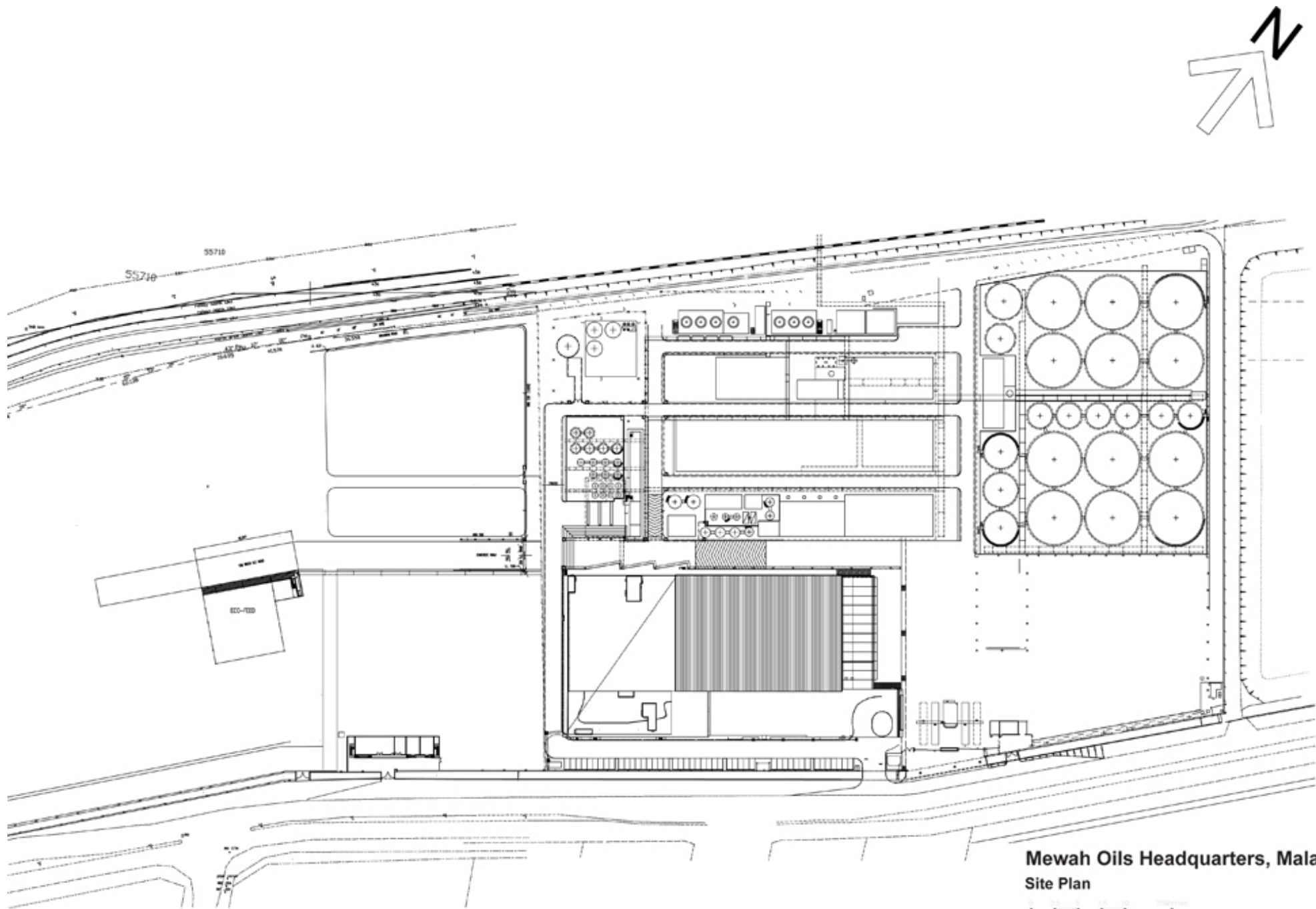


3121.MAL

Mewah Oils Headquarters, Malaysia

© T.R.Hamzah & Yeang Sdn.Bhd  
for Aga Khan Award Submission (2006)





**Mewah Oils Headquarters, Malaysia**  
**Site Plan**



c T.R. Hamzah & Yeang Sdn. Bhd. (2005)





S326173.jpg



S326163.jpg





S326164.jpg

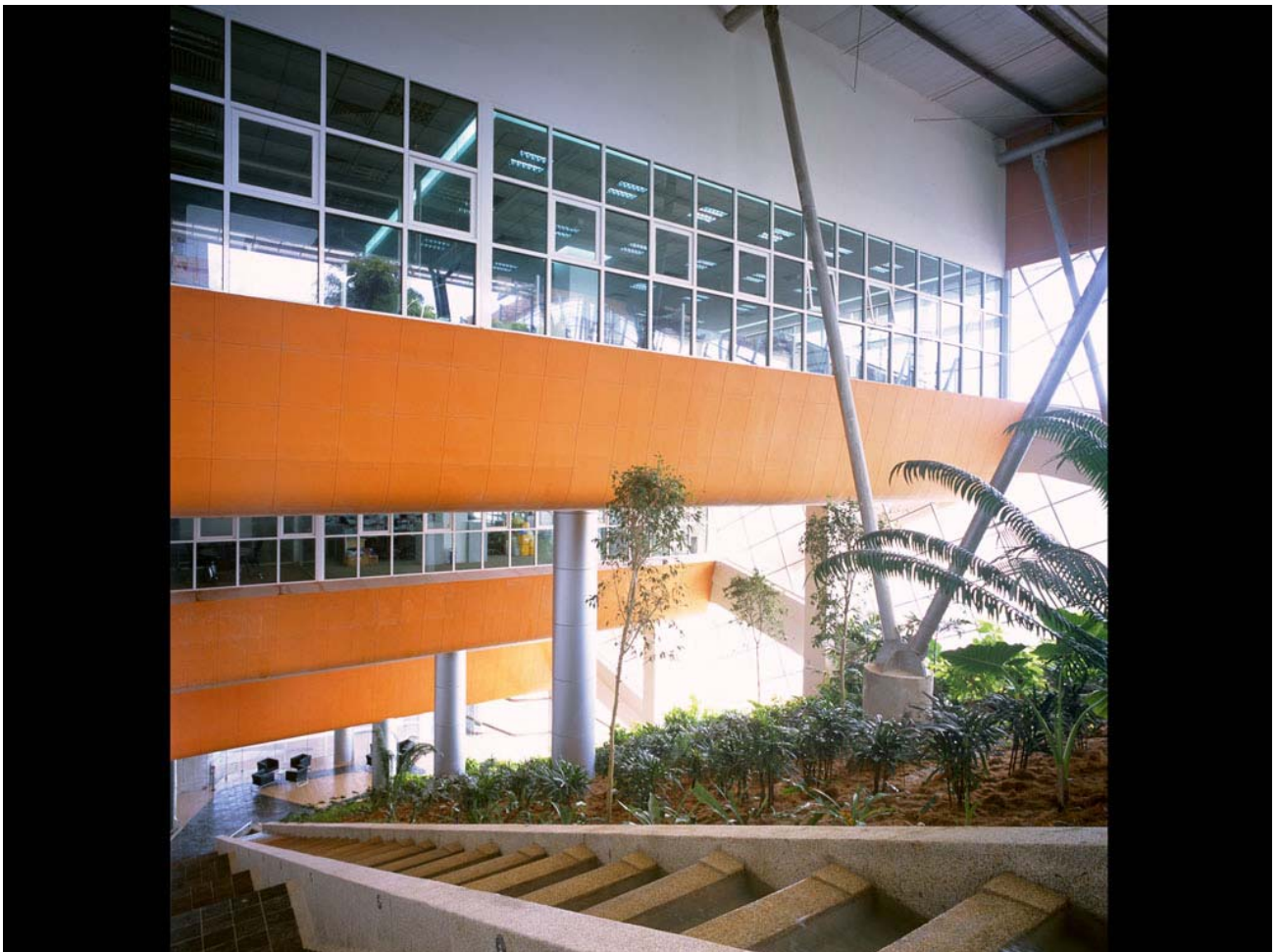


S326165.jpg





S326168.jpg



S326169.jpg





S326170.jpg



S326162.jpg





S326166.jpg



S326167.jpg





S326171.jpg



S326172.jpg