



Darolshefa Bazaar Bridge

Qom, Iran



Architect: Bavand Architects / Hossein Sheikh-Zeineddin

Client: Qom Rehabilitation Agency

Built Area: 1'000 m²

Cost: US\$ 314'300

The Darolshefa Bazaar Bridge is one of three pedestrian bridges that connect the residential areas on the north bank of the river Qom with the historic and religious nodes on the opposite side. It consists of a wide walkway lined by shops that take their scale from the city's historic bazaar. Like the old bridges of Isfahan (its main inspiration), the bridge is divided into three spans, with strategic viewpoints along its length. While the rhythm of the structure remains faithful to traditional precedent, the dimensions of the spans were changed to reflect the capabilities of modern reinforced concrete construction.

Darolshefa Bazaar Bridge

Over the Qom River, adjacent to the Clerical School
Qom, Iran

Architects Bavand Architects / Hossein Sheikh-Zeineddin
Tehran, Iran

Clients Qom Rehabilitation Agency
Ghom, Iran

Commission 1997

Design 1997 - 1997

Construction 1998 - 1999

Occupancy 1999

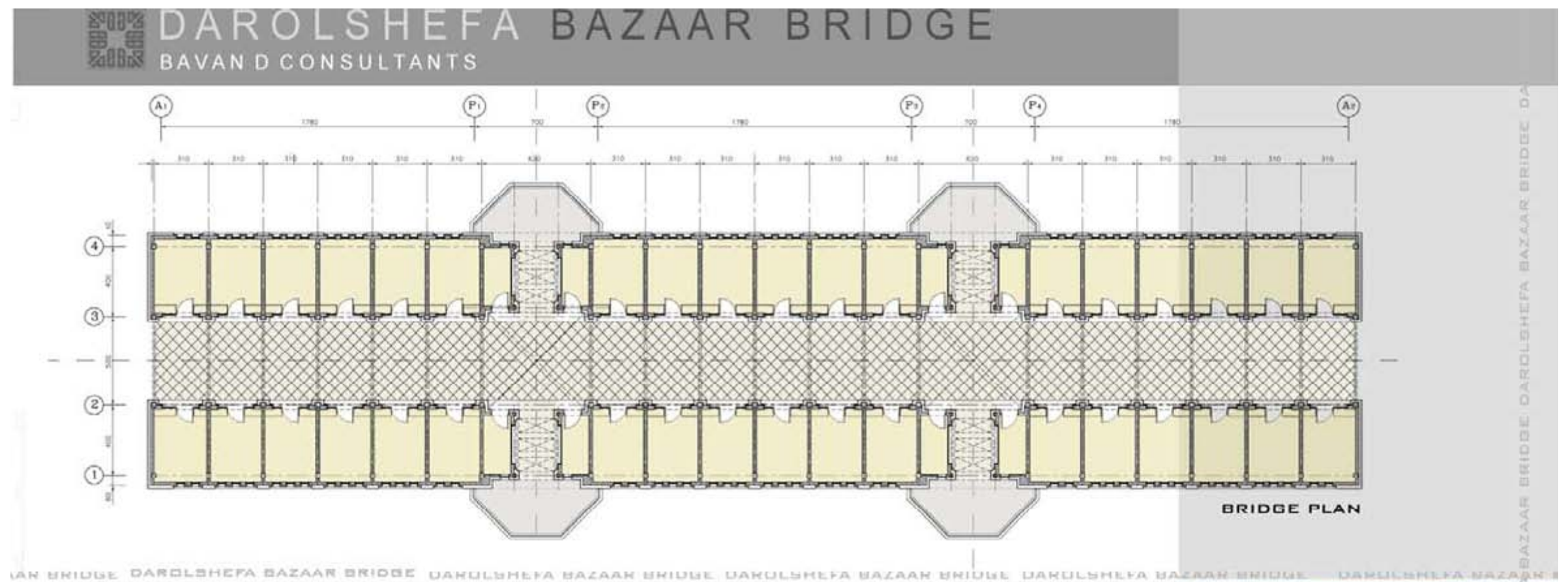
Site 1'000 m²

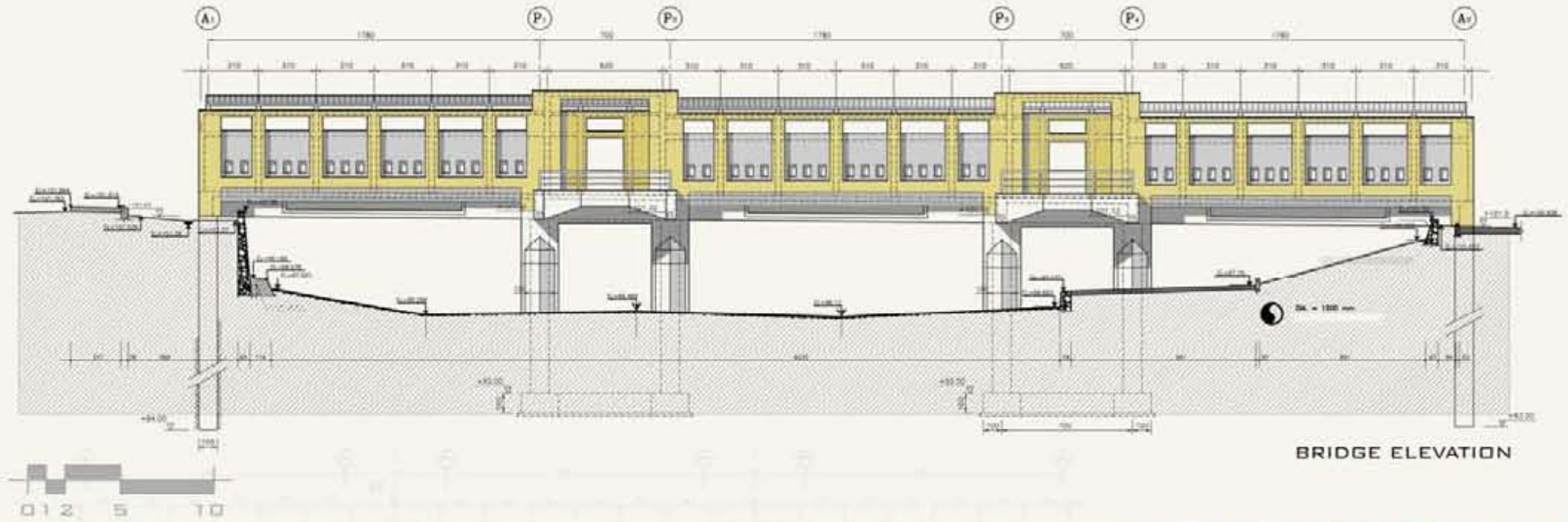
Ground Floor 375 m²

Total Floor 1'000 m²

Costs US\$ 314'300

Programme The Darolshefa Bazaar Bridge is one of three pedestrian bridges that connect the residential areas on the north bank of the river Qom with the historic and religious nodes on the opposite side. It consists of a wide walkway lined by shops that take their scale from the city's historic bazaar. Like the old bridges of Isfahan (its main inspiration), the bridge is divided into three spans, with strategic viewpoints along its length. While the rhythm of the structure remains faithful to traditional precedent, the dimensions of the spans were changed to reflect the capabilities of modern reinforced concrete construction.





The bridge connects the residential side of the river to the historic district of the city. The pedestrian pathway is intended as a continuation of the green-space of the city, strategic openings along the length of the bridge provide exceptional views of the city and its Holy Shrine.



DAROLSHEFA BAZAAR BRIDGE
 BAVAN D CONSULTANTS



Document B

ARCHITECT'S RECORD
2007 AWARD CYCLE

I. IDENTIFICATION

Project Title: Darolshafa Bazaar Bridge
 Street Address: Over the Ghom River, adjacent to the Clerical School
 City: Gilom Country: Iran

II. PERSONS RESPONSIBLE:**A. Architect/Planner**

Name: Bavand Consultants
 Mailing address: 92 Shahrtaash St., North Sabzevari Ave
 City: Tehran Postal code: 15596
 Country: Iran Telephone: (98 21) 88 76 3054
 Facsimile: (98 21) 88 76 3652 E-mail: info@bavand.com
 Principal Designer: Hossein Sheikh Zeinoddin, Farrokh Zouhouzi

B. Client

Name: Ghom Rehabilitation Agency
 Mailing address:
 City: Postal code:
 Country: Telephone:
 Facsimile: E-mail:

C. Project Affiliates/Consultants

Please list those involved in the project and indicate their roles and areas of responsibility (e.g. engineers, contractors, economists, master craftsmen, other architects, clients, etc.) Please cite addresses and telephone numbers separately.

Name	Role
Bavand - Amir Yazdan	Designer
Hanza Consulting Engineers	Structural Designer

Hanza Consulting Engineers
 Mofateh St., Derash St., #22
 Tehran, Iran
 Tel: (9821) 88-82-36-97
 Email: hanza@hanza.com

III. TIMETABLE

(Please specify year and month)

A	Commission.	April 1997		
B	Design: 5 months		Commencement: July 1997	Completion: November 1997
C	Construction: 12 months		Commencement: January 1998	Completion: January 1999
D	Occupancy:	June 1999		

Remarks: This project is part of a series of projects planned for around the Holy Shrine. These projects are gradually being completed.

IV. AREAS AND SURFACES

(Please specify in square metres)

A	Total site area	1000 sq m
B	Ground floor area	375 sq m
C	Total combined floor area (Including basement(s), ground floor(s) and all upper floors)	375 sq m

Remarks: Of the 1000 sq m project area, 375 sq m is the total area of the covered shops and 625 sq m is the circulation space over the bridge and in between the shops.

V. ECONOMICS

(Please specify the amounts in local currency and provide the equivalent in US dollars. Specify the date and the rate of exchange in US dollars at the time.)

	Amount in Local Currency	Amount in US dollars	Exchange rate	Date
A	Total initial budget	1,680,000,000 (rls)	\$280,000	\$1 = 6,000 rls 1997
B	Cost of land	The bridge is constructed over a river, which is a public way, with no cost associated with it.		
C	Analysis of actual costs			
1	Infrastructure	220,000,000 (rls)	\$34,430	\$1 = 7,000 rls 1998-99
2	Labour	660,000,000 (rls)	\$92,300	\$1 = 7,000 rls 1998-99
3	Materials	1,235,000,000 (rls)	\$176,430	\$1 = 7,000 rls 1998-99
4	Landscaping			
5	Professional fees	85,000,000 (rls)	\$14,140	\$1 = 6,000 rls 1997
6	Other			
D	Total actual costs (Without land)	2,200,000,000 (rls)	\$314,300	\$1 = 7,000 rls 1998-99
E	Actual cost (Per square metre)	2,200,000 (rls)	\$314.30	\$1 = 7,000 rls 1998-99
	Remarks:	All costs were paid through the budget of the City of Ghom allocated for construction.		

VI. PROJECT DESCRIPTION

The Darolshefa Bazaar Bridge is one of three pedestrian bridges that connect the residential part of the city of Ghom, on the north side of the river Ghom, to its historic district and religious nodes, such as the Holy Shrine and the Clerical School (Howzeyeh Elmieh), on the south side of the river

The bridge consists of a wide pedestrian pathway, which is intended as a continuation of the public green-space of the city. The structures on either side of the pathway contain shops in the scale of typical storefronts of the historic bazaar of the city. Strategic openings along the length of the bridge provide exceptional views of the city and its Holy Shrine.

The bridge was inspired by traditional Persian bridges of Isfahan, where the bridge is divided into 3 spans, with focal points situated between each span. In this project, the design concept and rhythm of the structure remained faithful to the traditional examples; however, the dimensions of the spans were changed to reflect the modern capabilities of today, and thus making the design a contemporary interpretation of a traditional solution.

VII. MATERIALS, STRUCTURE AND CONSTRUCTION

The structure of the bridge is reinforced concrete, while the structure of the shops above the bridge is of steel. The walls are all of brick.

VIII. PROJECT SIGNIFICANCE AND IMPACT

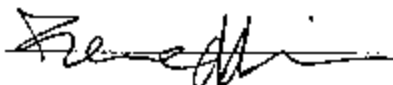
The Darolshafa Bridge is located at a point on the river Ghom, where on one side of the river, a high traffic interstate highway from Tehran enters the city, and on the other side, the most important religious nodes, such as the Clerical School (Howzeyeh Elmieh) are situated.

Prior to the construction of this bridge, the connection points between the two sides of the river were set at a long distance from one another. Since the completion of this project, the two sides of the river have been connected in a seamless fashion, allowing tourists and residents alike, easier access to the points of interest of the city. Additionally, the design of the bridge makes the "connector" a point of interest in itself. The strategic openings along the bridge, allow for spectacular vantage points towards the important structures of the city, while the bazaars provide opportunities for shopping.

Please note: The submission of this Record is a prerequisite to candidacy for the Award. All information contained in and submitted with the Record will be kept strictly confidential until announcement of the Award is made. Subsequently, such material may be made available by the Aga Khan Award for Architecture and you hereby grant the Aga Khan Award for Architecture a non-exclusive licence for the duration of the legal term of copyright (and all rights in the nature of copyright) in the Material submitted to reproduce the Material or licence the reproduction of the same throughout the world.

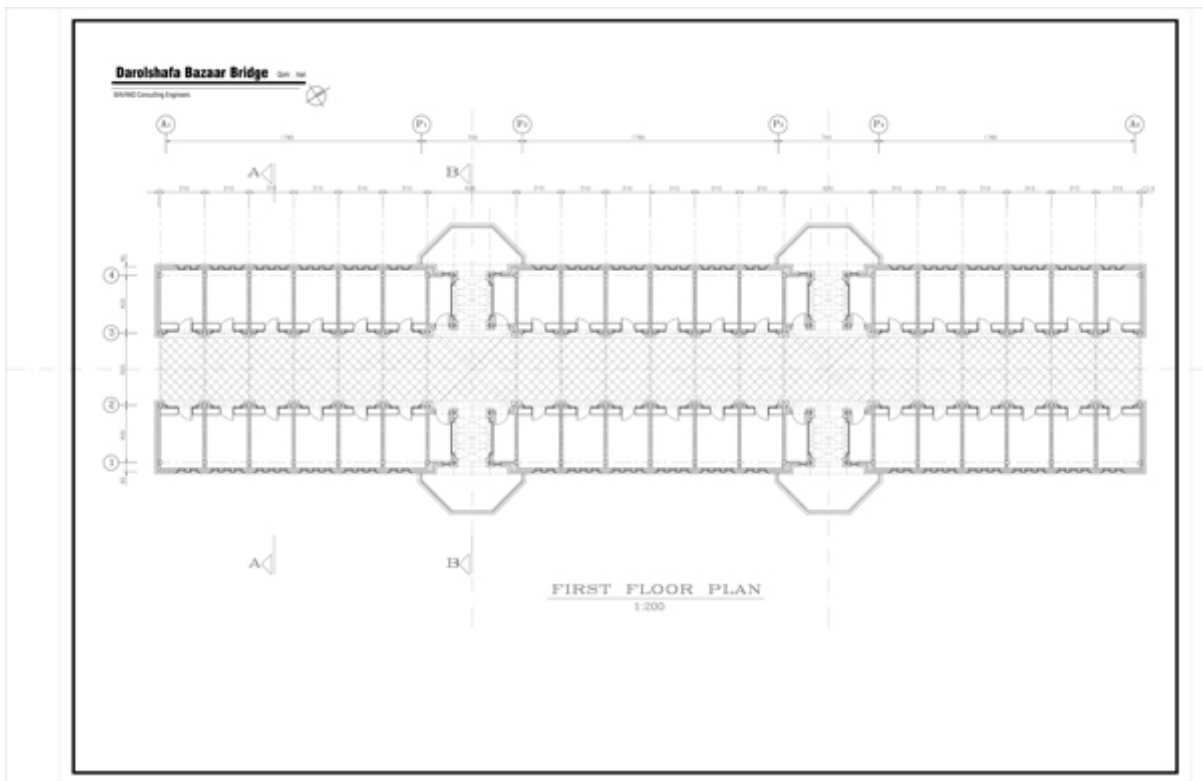
Name (please print): Hossein Sheikh Zeineddin

Signature



Date: September 26, 2006

3267_Dr



S327892



S327893



S327894



S327895



S327896



S327897



S327898



S327899



S327900



S327901



S327902



S327903



Document C

MATERIALS IDENTIFICATION FORM
Provide a full list of all material being submitted

No.	Description	Remarks
1_Plan	First Floor Plan	
2_Elevation	Elevation	
3_Section1	Longitudinal Section	
4_Section2	Cross Sections	
5	Bavand's CV	
6		
7		
8		
9		
10		
11		
12		
13		
14		
15		
16		
17		
18		

Document D

IMAGE IDENTIFICATION FORM

For each digital image/slide listed below, specify the name of the photographer and the date of photography. In the space designated « Caption », provide a description of the image in English or in French. Also specify any copyright restrictions in the space designated « Copyright ». You may substitute this form with your own as long as the required information is included.

No.	Description	Remarks
3267 IRA-1	View looking north-west toward the bridge, with the clerical school, and the Holy Shrine beyond	
3267 IRA-2	Bridge Elevation	
3267 IRA-3	View looking north-east toward the clerical school	
3267 IRA-4	Close-up of a bridge pier	
3267 IRA-5	Bridge elevation	
3267 IRA-6	Close-up of bridge elevation	
3267 IRA-7	South corner of bridge	
3267 IRA-8	Close-up of bridge balcony	
3267 IRA-9	Interior view of one of the bazaar stalls	
3267 IRA-10	Interior view of one of the bazaar stalls	
3267 IRA-11	Bridge elevation	
3267 IRA-12	Looking out of one of the bridge openings toward the Holy Shrine	