

## COTTON WEEKLY EXPORT REPORT

### USA Upland and Pima Export Sales and Shipments for Week Ending September 15, 2022

- Net current crop sales were 32,700 running bales. Net current crop PLUS new crop sales were 45,990 running bales.
- Shipments were 232,710 running bales, which was 146% of expected seasonally-adjusted pace.
- Current PLUS new crop sales were down 64% from last week and down 77% from the 4-week average.
- There are 45 weeks remaining in the 2022/23 marketing year.
- To ship the USDA, WASDE estimate of 12,600,000 (480 lb.) bales for 2022/23 crop, the U.S. should average current year sales of 116,900 running bales per week, and needs to average shipments of 225,800 running bales per week.
- Sales were 30% of the required weekly average. Shipments were 100% of the needed weekly average.
- Current crop sales were down 68% from last week and down 78% from the 4-week average.

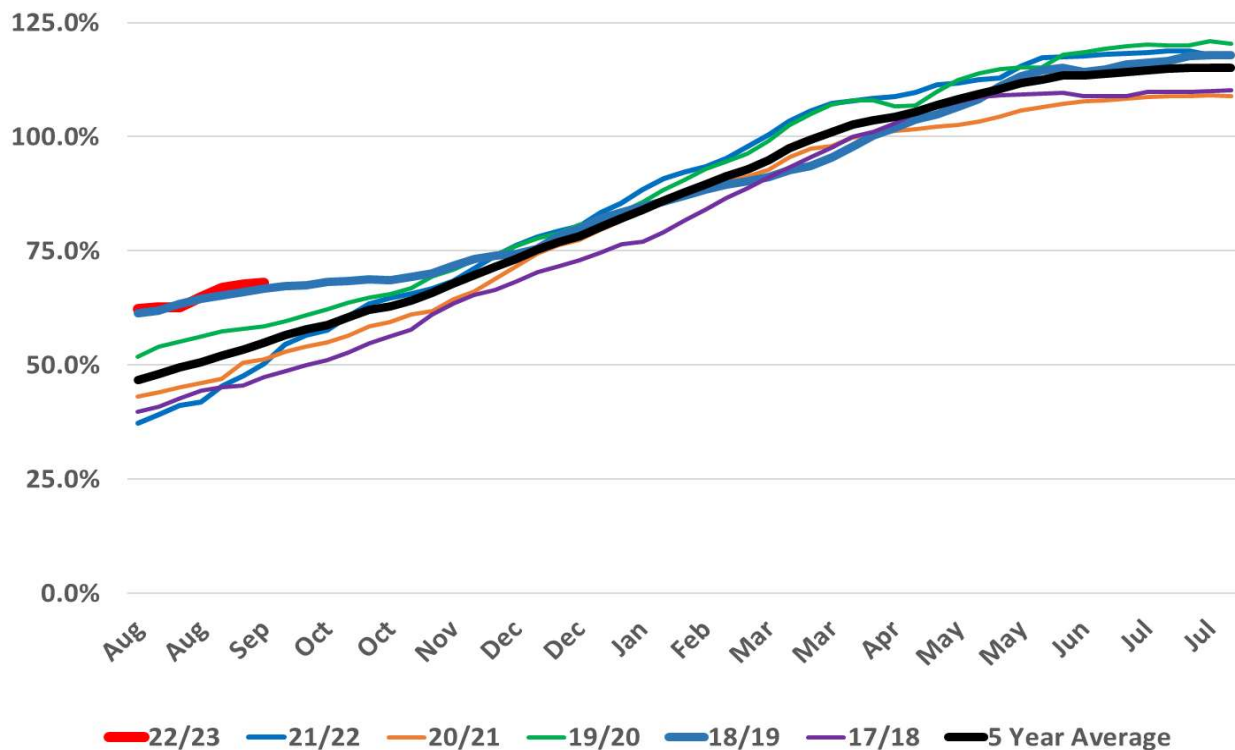
Net sales at 46,000 bales for the week ending Sept 15 look disappointing – down from last week. However, the U.S. has already sold 8.6 million bales for this marketing year, which is 68% of the USDA projected 12.6 million bales. The five-year average for week #7 is 55%. The last year the U.S. stood near 68% was the 2018/19 year which ended with exports of 13.8 million bales.

Cancellations of 12,600 were up from last week but below the average of the previous four weeks. China had the bulk of cancellations with 8,800 bales and another 4,700 bales decrease due to a destination change.

Pakistan was the main buyer with more than half of the business for the week for 27,800 bales. Sales were spread across nine countries.

Shipments at 232,700 bales were above average for mid-September and right on pace for the year. China took almost one-third of the shipments with 73,100 bales.

### 2022/2023 Export Sales vs. Average





## U.S. Cotton Exports Details

CURRENT MARKETING YEAR							Week # 7 Ending: 9/15/2022		
	Net Current Crop Sales			Net New Crop Sales			Current plus New Crop Sales		
	Pima	Upland	All	Pima	Upland	All	Pima	Upland	All
<b>This Week</b>	263	32,432	32,695	-	13,297	13,297	263	45,729	45,992
<b>This Marketing Year to Date</b>	102,663	7,989,165	8,091,828	-	953,669	953,669	102,663	8,942,834	9,045,497
<b>Outstanding Sales</b>	89,546	6,351,153	6,440,699	-	953,669	953,669	89,546	7,304,822	7,394,368

	Shipments (Running Bales)			480# BS
	Pima	Upland	All	All
<b>This Week</b>	394	232,316	232,710	246,300
<b>This Marketing Year to Date</b>	13,117	1,638,012	1,651,129	1,747,400

USDA Export Estimate (480 lb. Bales)	
	All
<b>Season</b>	12,600,000

LAST MARKETING YEAR							Week # 7 Ending: 9/16/2021		
	Net Marketing Year Sales			Net Next Year Sales			Current plus Next Crop Sales		
	Pima	Upland	All	Pima	Upland	All	Pima	Upland	All
<b>Last Marketing Year to Date</b>	198,175	6,652,391	6,850,566	-	686,802	686,802	198,175	7,339,193	7,537,368
<b>Outstanding Sales</b>	155,281	5,300,769	5,456,050	-	686,802	686,802	155,281	5,987,571	6,142,852

	Shipments (Running Bales)			480# BS
	Pima	Upland	All	All
<b>Week</b>	3,789	176,779	180,568	
<b>Last Marketing Year to Date</b>	42,894	1,351,622	1,394,516	1,496,100

USDA Export Estimate (480 lb. Bales)	
	All
<b>Season</b>	14,620,000