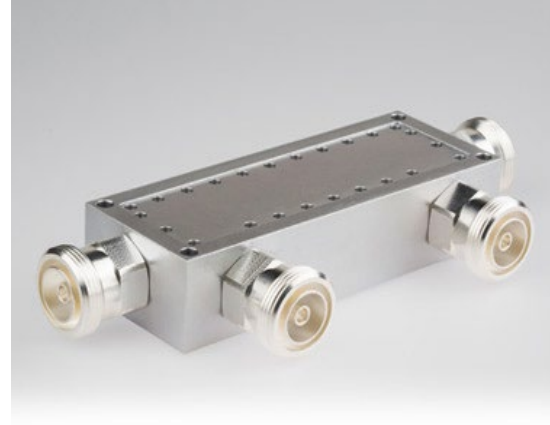


Type N Dual Directional Couplers

- Octave Bands to 8 GHz
- High Power
- Low Insertion Loss
- Designed to meet MIL-DTL-15370
- Environmental Screening Available



Frequency Range (GHz)	Connectors	Model Number	Coupling Loss (db, nom.)	Coupling Flatness (dB, max.)	Directivity (dB, min.)	Insertion Loss (dB, max.)	CW Input (W, max.)	Main Line VSWR
								(x.xx:1, max.)
0.8 - 0.96	Type N jack	DDC-30N-0.9G	30 ± 1	± 0.2	25	0.10	500	1.10
0.7 - 1.4	Type N jack	DDC-30N-1.0G	30 ± 1	± 1.0	25	0.10	400	1.10
1.0 - 2.0	Type N jack	DDC-30N-1.5G	30 ± 1	± 1.0	23	0.25	350	1.15
1.8 - 1.9	Type N jack	DDC-30N-1.8G	30 ± 1	± 0.2	25	0.20	350	1.10
2.0 - 4.0	Type N jack	DDC-30N-3.0G	30 ± 1	± 1.0	22	0.25	300	1.20
2.6 - 5.2	Type N jack	DDC-30N-3.9G	30 ± 1	± 1.0	20	0.20	300	1.20
4.0 - 8.0	Type N jack	DDC-30N-6G	30 ± 1	± 1.0	18	0.20	250	1.20

Coupling is referenced to the input.
Insertion loss includes coupling loss.

Other frequency bands and connectors available.

Electrical Specifications

Impedance: 50 Ω, nominal

Mechanical & Environmental Specifications

Operating Temperature -55 to +85 °C