



Prepared for the Unexpected

USB-C Docking Station User Manual



Table of Contents

SAFETY INSTRUCTIONS	1
COPYRIGHT	1
TRADEMARKS.....	1
REGULATORY COMPLIANCE	2
FCC CONDITIONS	2
CE	2
WEEE INFORMATION.....	2
INTRODUCTION	3
FEATURES.....	4
PACKAGE CONTENTS	5
SYSTEM REQUIREMENTS	5
PRODUCT OVERVIEW	6
CONNECTION	8
DISPLAY CONFIGURATION	25
MULTI-MONITOR CONFIGURATION	25
EXTENDED MODE.....	26
MIRROR MODE	27
SET THE PRIMARY MONITOR.....	28

SST MODE	28
MST MODE.....	28
AUDIO CONFIGURATION	29
SPECIFICATION	30

Before attempting to connect, operate or adjust this product, please save and read the User Manual completely. The style of the product shown in this User Manual may be different from the actual unit due to various models.

Safety Instructions

Always read the safety instructions carefully:

- Keep this User Manual for future references.
- Keep this equipment away from humidity.
- If any of the following situation arises, get the equipment checked by a service technician:
 - The equipment has been exposed to moisture.
 - The equipment has been dropped and damaged.
 - The equipment has obvious sign of breakage.
 - The equipment has not been working well or cannot get it to work according to the User Manual.

Copyright

This document contains proprietary information protected by copyright. All rights reserved. No part of this manual may be reproduced by any mechanical, electronic or other means, in any form, without prior written permission of the manufacturer.

Trademarks

All trademarks and registered trademarks are the property of their respective owners or companies.

Regulatory Compliance

FCC Conditions

This equipment has been tested and found to comply with Part 15 Class B of the FCC Rules. Operation is subject to the following two conditions: (1) This device may not cause harmful interference. (2) This device must accept any interference received and include interference that may cause undesired operation.

CE

This equipment is in compliance with the requirements of the following regulations: EN 55 022: CLASS B

WEEE Information

For EU (European Union) member users: According to the WEEE (Waste electrical and electronic equipment) Directive, do not dispose of this product as household waste or commercial waste. Waste electrical and electronic equipment should be appropriately collected and recycled as required by practices established for your country. For information on recycling of this product, please contact your local authorities, your household waste disposal service or the shop where you purchased the product.



Introduction

The USB-C Docking Station is designed for extra connectivity demands and supports DP 1.4 output. With the docking station, you can extend the connection of a computer to more USB peripherals, Ethernet network, the combo audio via USB-C interface. Feel free to plug in upside down for USB-C plug is reversible. Adopting PD Charging technology, upstream charging function through USB-C interface, you can charge the host up to 85W with higher than 100Watts power adapter or automatically adjust to lower charging power with smaller power adapter. With the built-in USB 3.1 ports, the docking station enables you to enjoy the super speed data transmission between USB peripherals.

- *Incorporates HDMI® technology.*

Features

- USB-C Input
 - USB-C 3.1 Gen 2 port
 - Upstream PD powered, supports up to 85W
 - Supports VESA USB Type-C DisplayPort Alt mode
- Downstream Output
 - 2 x USB-A 3.1 Gen 2 ports (5V/0.9A)
 - 1 x USB-A 3.1 Gen 2 port with BC 1.2 CDP (5V/1.5A) and DCP and Apple Charge 2.4A
- Video output
 - DP 1.4++ x 2 and HDMI 2.0 x1
 - DP 1.2 HBR2: 1x 4K30, 2x FHD60, 3x FHD30
 - DP 1.4 HBR3: 1x 4K60, 2x QHD60, 3x FHD60
 - DP 1.4 HBR3 DSC: 1x 5K60, 2x 4K60, 3x 4K30
- Supports audio 2.1 channel
- Supports Gigabit Ethernet

Package Contents

- USB-C Docking Station
- USB-C Cable
- Power Adapter
- User Manual

System Requirements

- Windows 10
- Mac OS

Product Overview

Front



Item	Description
1. Power Button	Switch to power on/off
2. Combo Audio Port	Connect to a headset
3. USB-C Port	Connect to USB-C devices
4. USB-A Port	Connect to USB-A devices with BC 1.2 charging & Apple Charge
5. Kensington Security Slot	Secure your device safely

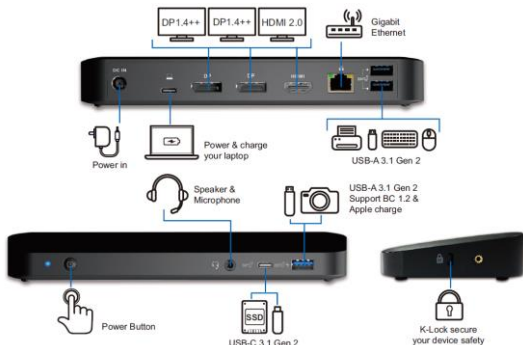
Rear



Item	Description
5. Power jack	Connect to the power adapter
6. USB-C Port	Connect to the USB-C port of a computer
7. DisplayPort (x2)	Connect to DP monitors
8. HDMI port	Connect to an HDMI monitor
9. RJ-45 port	Connect to Ethernet
10. USB-A Port (x2)	Connect to USB devices

Connection

To connect the USB peripherals, Ethernet, speaker and microphone, follow the illustrations below to connect the corresponding connectors.



How to Enable Dual & Triple Extended Display?

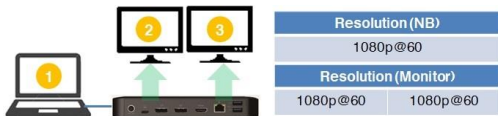


NOTE:

- The screenshots might vary slightly with the operating system.
- The NB will keep your previous display settings every time you power on/off it.
- You may reset up the display settings if you change the monitor.
- Always check your NB display settings and set up in Extended Mode.
- Some of 4K monitor will occupy entire 4K bandwidth and cause 3rd display non-function.

1. How to Enable Dual Extended Display?

1.1 If monitors are FHD

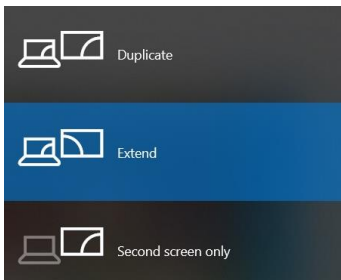


Step

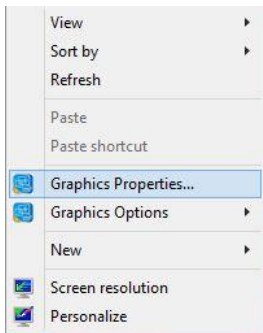
1. Connect **DP+DP or DP+HDMI** to the monitor.
2. The monitor shows up connected.



3. Set your NB as **Extended Mode**



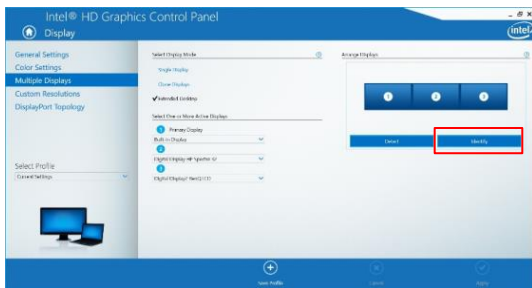
4. In desktop mode, right-click the **Desktop** and select **Graphics Properties**.



5. Click **Display setting**.

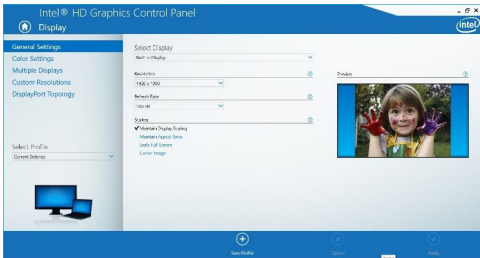


6. In the **Multiple Displays**, click **Identify** your monitors.





7. In the **General Settings**, adjust the extended monitor resolution to **1920 x 1080**, refresh rate **60Hz**, and click **Apply** to save your settings.



Note: The Primary Display default is NB screen, 2 & 3 should be extended monitor.

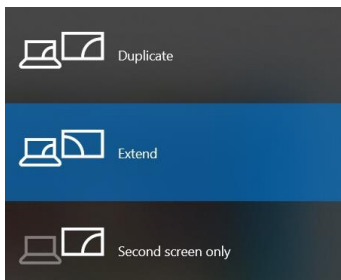
1.2 If monitors are 4K

A. 4K Monitor: 1080@60 downgradable



Step

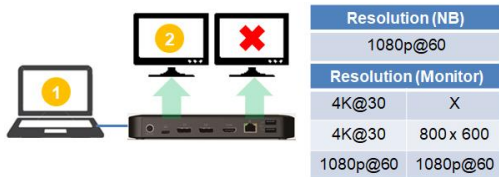
1. Connect **DP+DP or DP+HDMI** to the monitor.
2. Set your NB as **Extended Mode**.



3. The 4K monitor downgrades automatically the resolution to 1080p@60.

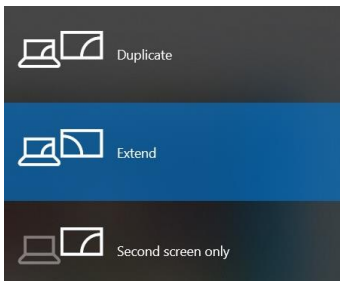


B. 4K Monitor: 4K@30 fixed resolution, not downgradable



Step

1. Connect one video port to the monitor.
2. Set your NB as **Extended Mode**.



3. The 4K monitor default resolution has been set as **3840 x 2160, refresh rate 30Hz**.
4. Connect your second monitor to the docking station, **it may result to the following situations:**

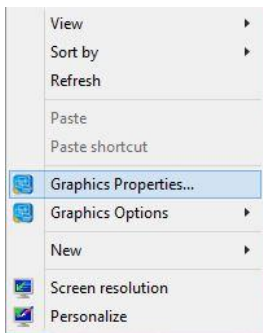


NOTE:

- The second monitor doesn't work.
- The monitor downgrades the resolution to 800 x 600 automatically.



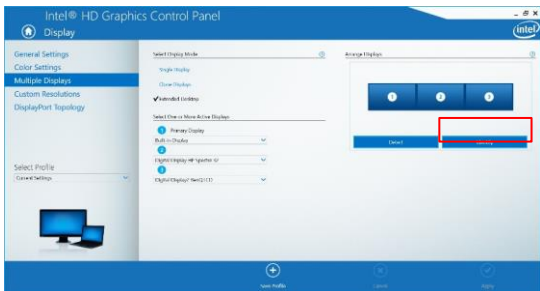
5. In desktop mode, right-click the **Desktop** and select **Graphics Properties**.



6. Click **Display setting**.

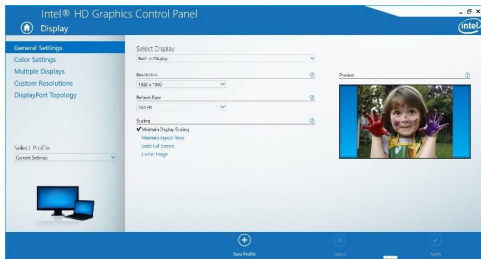


7. In the **Multiple Displays**, click **Identify** your monitors.





8. In the **General Settings**, adjust the extended monitor resolution to **1920 x 1080**, refresh rate **60Hz**, and click **Apply** to save your settings.



2. How to Enable Triple Extended Display?

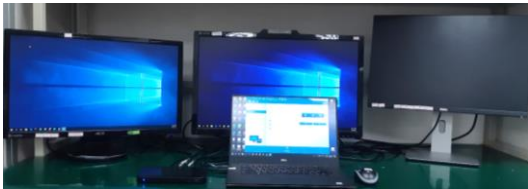
2.1 If monitors are FHD



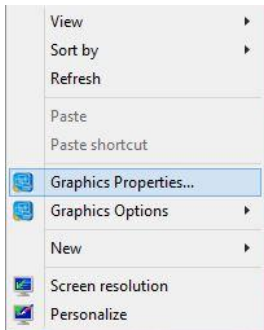
Max. Resolution (Monitor)		
1080p@30	1080p@30	1080p@30

Step

1. Connect all video ports to monitor. Only two of the three monitors are working.



2. In desktop mode, right-click the **Desktop** and select **Graphics Properties**.

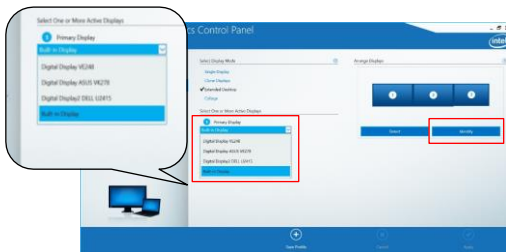


3. Click **Display setting**.



4-1. Click **Identify** your monitors.

4-2. Click the **Primary Display** drop-down box, and select the third active monitor, then click **Apply** to save your settings.



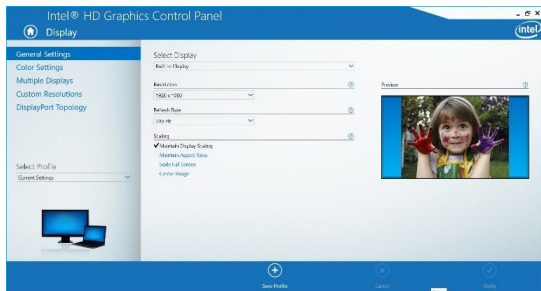
NOTE:

- Here are only shown three monitors due to limited by the Intel Graphic Control Panel.

5. Now you can see video on the three monitors.



6. In the **General Settings**, adjust the extended monitor resolution to **1920 x1080p**, refresh rate **30Hz**, click **Apply** to save your settings



2.2 If monitors are FHD

Follow the same steps as 1.2.

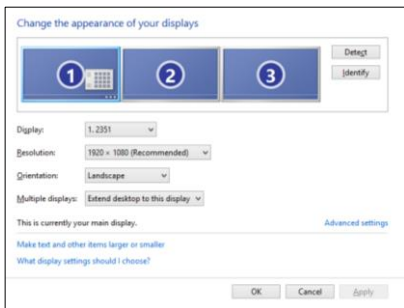
Display configuration

NOTE: The screenshots might vary slightly with the operating system.

Multi-monitor configuration

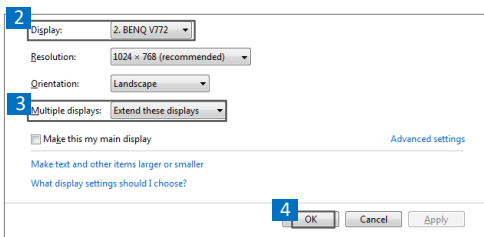
Once the extra monitors are connected, they can be configured to either **Mirror mode**, **Extended mode** or set the primary display.

Position the mouse anywhere on the **Windows Desktop**, Right-click and select **Screen Resolution**.



Extended mode

1. Refer to the **Multi-monitor configuration** section to bring up the configuration window.
2. In the **Display** drop-down menu, select the preferred monitor.
3. Select **Multiple Displays > Extend these displays**.
4. Click **OK** to confirm and exit.



5. Once the setting is completed, simply drag and drop the application icons or the opened windows to the add-on monitor. However, some applications may not support to display on the extended desktop.



NOTE: If the system only supports SST mode, the external monitors connected will be considered to be the same output.

6. Troubleshooting

a. Cursor disappeared

If the status remains in the extended mode but the docking station is disconnected, the desktop will still be panned to the add-on monitor. The cursor may not be found on the primary monitor in such a case. If it happens, connect the add-on monitor through the docking station again or keep moving the mouse.

b. Video playback in extended mode

If the video or DVD playback quality is poor or low performance in extended mode, please playback it on the primary monitor instead of the add-on monitor.

Mirror mode

1. Refer to the **Multi-monitor configuration** section to bring up the configuration window.
2. In the **Display** drop-down menu, select the preferred monitor.
3. Select **Multiple Displays > Duplicate these displays**.
4. Click **OK** to confirm and exit.

Set the primary monitor

1. Refer to the **Multi-monitor configuration** section to bring up the configuration window.
2. In the **Display** drop-down menu, select the preferred monitor.
3. Check the box of **Make this my main display**.



NOTE: For some computers, you may need to disable the main display by unchecking the box of **Extend the desktop onto this monitor** or **Extend my Windows desktop onto this monitor**.

4. Click **OK** to confirm and exit.

SST mode

If the system only supports SST mode, the external monitors connected will be considered to be the same output.

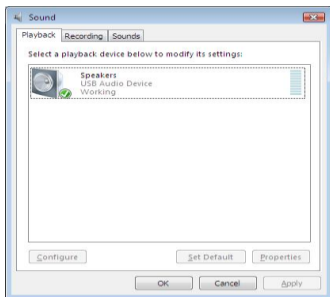
MST mode

When using MST mode to connect external monitors, you can use **Mirror mode**, **Extended mode** or set the primary display.

Audio configuration

By default, when the docking station is connected to a computer, the audio configuration may be changed to **USB (Multimedia) Audio Device** automatically (this setting depends on models). If it does not work, follow the steps below to setup.

1. Open **Control Panel** and then select the hardware and sound icon.
2. Click **Sound > Manage audio devices** and then select **USB Audio Device**.



Specification

User Interface	Upstream	USB-C female connector
	Downstream	DP 1.4 female connector x2
		HDMI 2.0 female connector x1
		USB 3.1 female connector x4 (3A1C), one port supports BC 1.2/CDP & Apple Charge
		RJ-45 connector x1
		Combo Audio Jack (IN/OUT) x1
Video	Resolution	Single display, either one <ul style="list-style-type: none"> - DP: 3840x2160@30Hz - HDMI: 3840x2160@30Hz
		Dual display, either one <ul style="list-style-type: none"> - DP: 3840x2160@30Hz - HDMI: 3840x2160@30Hz
		Triple display <ul style="list-style-type: none"> - 1920x1080@30Hz
Audio	Channel	2.1 CH
Ethernet	Type	10/100/1000 BASE-T
Power	Power Mode	Self-powered
	Power Adapter	Input: AC 100-240V
		Output: DC 20V/5A
Working Environment	Operation Temperature	0~40 degree
	Storage Temperature	-20~70 degree
Compliance		CE, FCC



USB-C Docking Station
User Manual



V1.1