

R8 Rugged Tablet Expansion Module Smart Card Reader with RS-232/RJ-45 & USB 3.2 User's Manual



Package Contents

If any of following items is damaged, please contact your retailer.

Smart Card Reader with RS-232/RJ-45 & USB3.2 module



Screw & Mylar
(1+7+1+2+1)



Sponge



Expansion Module - Smart Card Reader with RS-232/RJ-45 & USB 3.2 Screws

Screw Name	Screw Type	Quantity	Torque
ISOT-M2.0X8L		1	2.0 ± 0.3 Kgf-cm
ISOT-M2.0X7L		7	2.0 ± 0.3 Kgf-cm
ISOF-M2X3L, D=4mm, BLACK NI		1	2.0 ± 0.3 Kgf-cm
ISOT-M2.0X4L, D=4.5mm, BLACK NI		2	2.0 ± 0.3 Kgf-cm



NOTE

The pictures are for reference only, actual items may slightly differ.

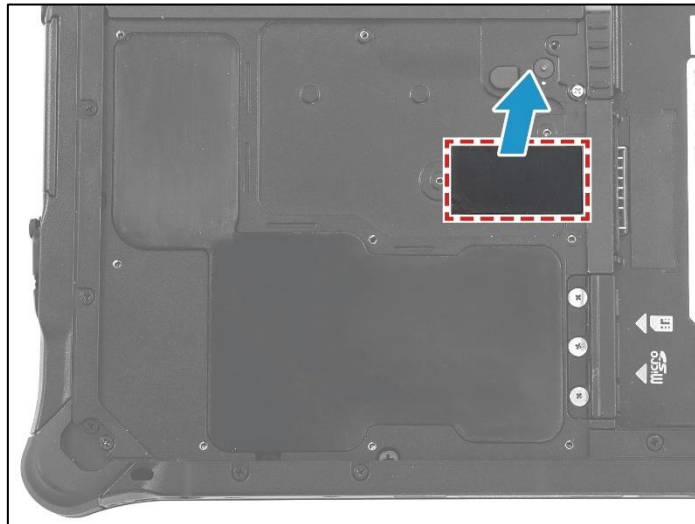
Installation

This section will guide you on how to install the expansion modules to your tablet PC.

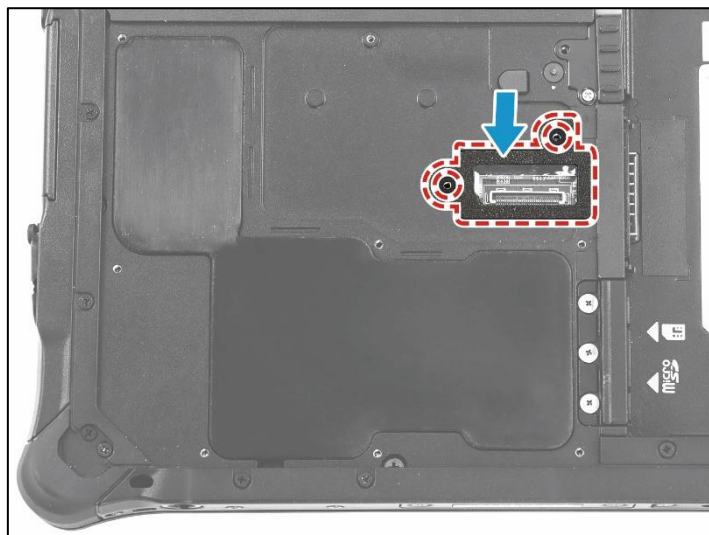
Note: Make sure to remove the battery before installing any type of expansion modules. For more information on how to remove/install the battery, please refer to the tablet PC service guide.

Installing the Expansion Module - Smart Card Reader with RS-232/RJ-45 & USB 3.2

1. Remove the screw securing the mylar on the lower case.

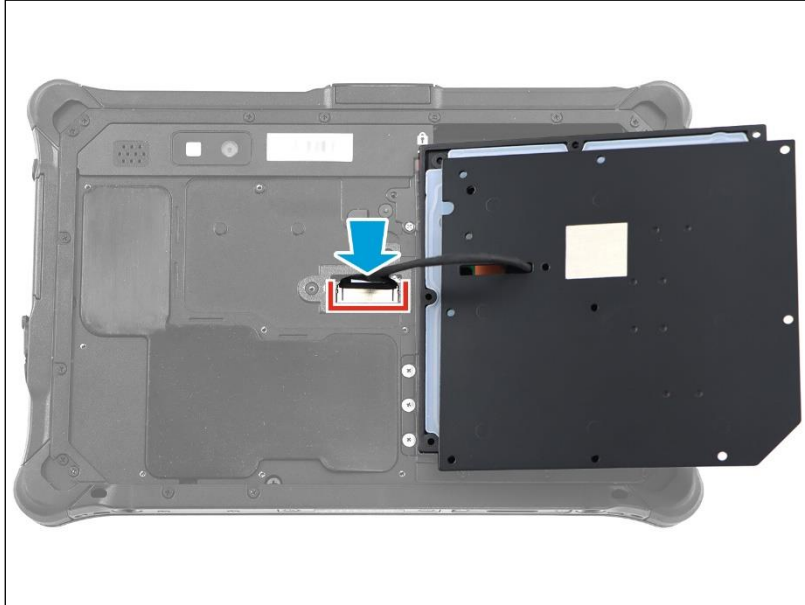


2. Attach the expansion sponge to the lower case.

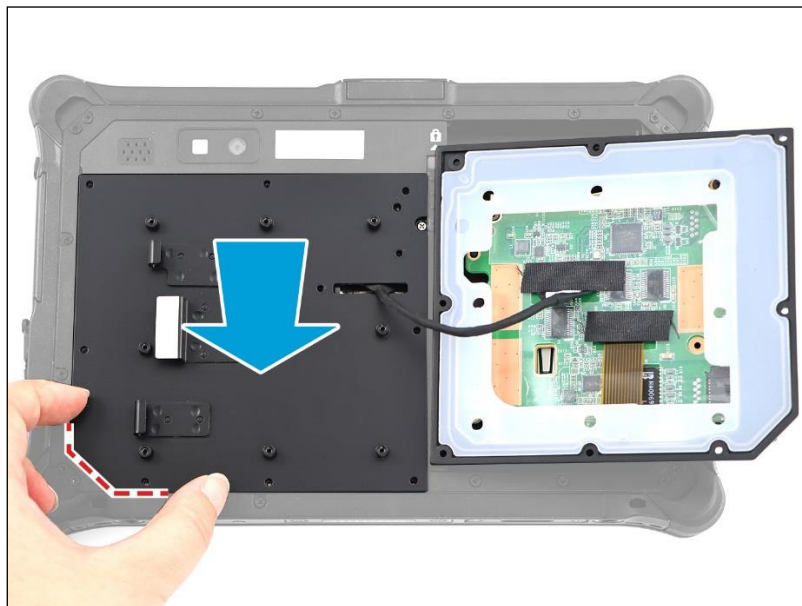


R8 Expansion Module - Smart Card Reader with RS-232/RJ-45 & USB 3.2

1. Connect the rear expansion module harness to the mainboard connector.

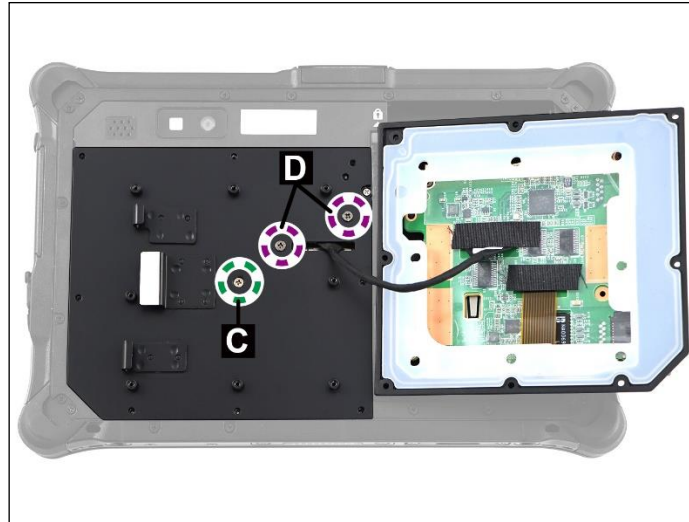


2. Place the rear expansion module bracket onto its slot on the lower case. Make sure the cut edge of the bracket is aligned properly with the lower case.

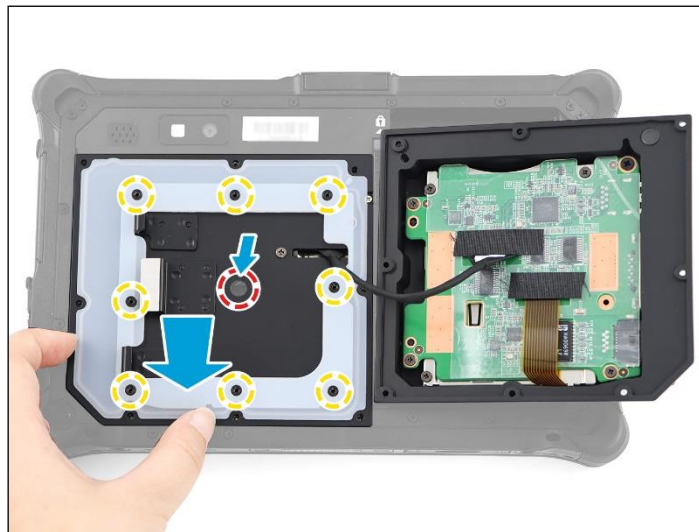


R8 Expansion Module - Smart Card Reader with RS-232/RJ-45 & USB 3.2

3. Attach the 3 screws to secure the rear expansion module to the lower case.
 - ISOF-M2X3L, D=4mm, BLACK NI (marked with C): 1 screw.
 - ISOT-M2.0X4L, D=4.5mm, BLACK NI (marked with D): 2 screws.



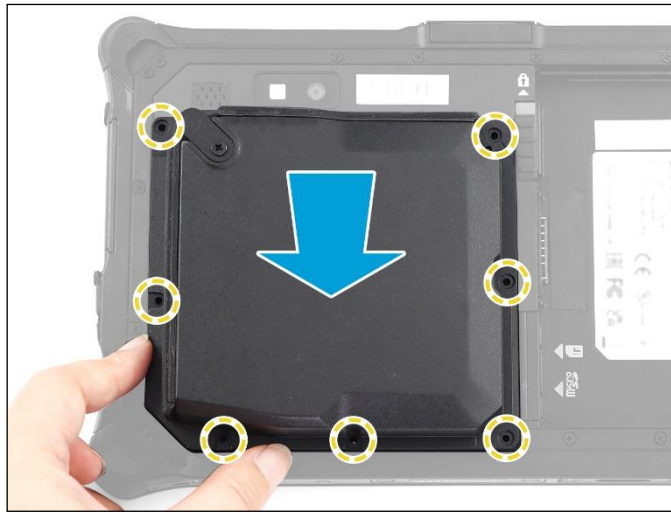
4. Align the rubber of the rear expansion module bracket with the screw holes and then place it on top of the bracket. Then place the mylar on top of the bracket screw.



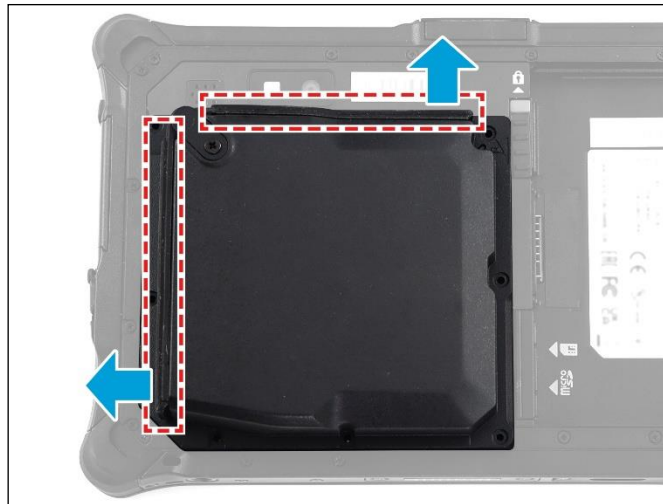
5. Fold the rear expansion module cable as shown in the image below.



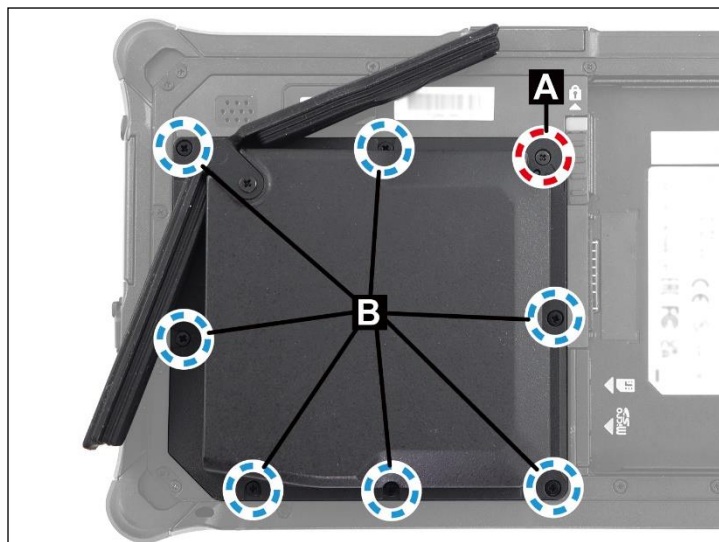
- Align by the screw holes and then place the rear expansion module on top of its bracket.



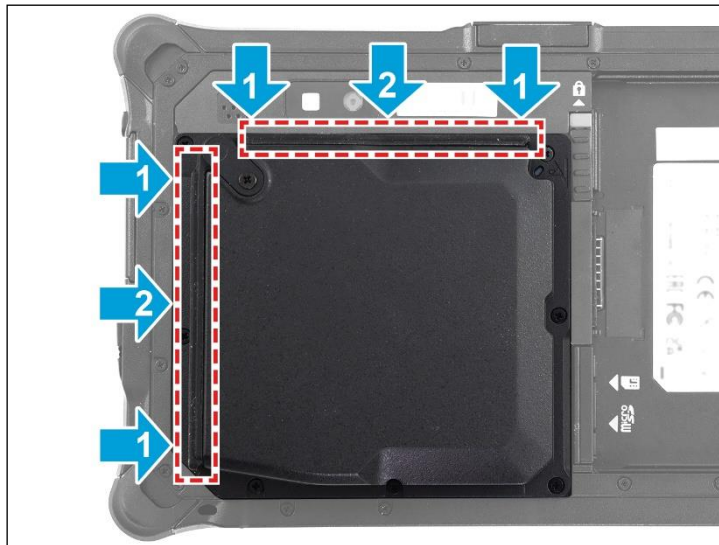
- Release the 2 rubber doors to access the screws.





- Attach the 8 screws to secure the rear expansion module to the lower case.
 - ISOT-M2.0X8L (marked with A): 1 screw.
 - ISOT-M2.0X7L (marked with B): 7 screws.



9. Press on the rubber doors by following the order from 1 to 2 to secure them in place.



Expansion Module - Smart Card Reader with RS-232/RJ-45 & USB 3.2 Screws

Screw Name	Screw Type	Quantity	Torque
ISOT-M2.0X8L		1	2.0 ± 0.3 Kgf-cm
ISOT-M2.0X7L		7	2.0 ± 0.3 Kgf-cm
ISOF-M2X3L, D=4mm, BLACK NI		1	2.0 ± 0.3 Kgf-cm
ISOT-M2.0X4L, D=4.5mm, BLACK NI		2	2.0 ± 0.3 Kgf-cm