

# **R8 Rugged Tablet Rotating Hand Strap**

## **User's Manual**



# Package Contents

If any of following items is damaged, please contact your retailer.

Rotating hand strap

Bracket (4)

Screw (1)



## NOTE

The pictures are for reference only, actual items may slightly differ.

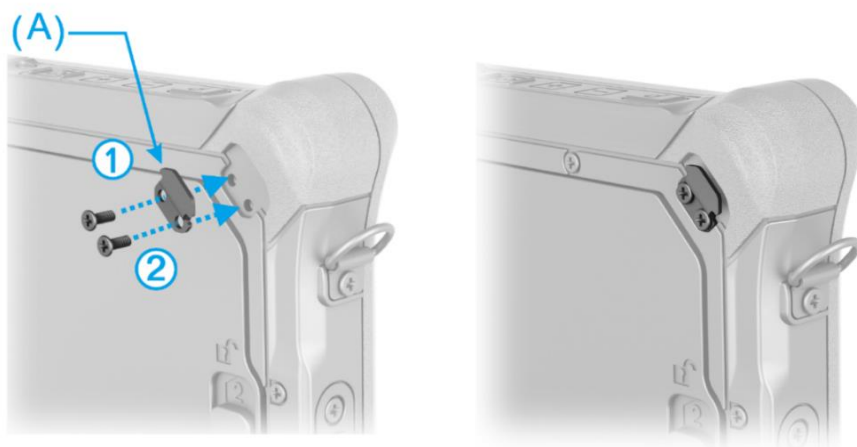
# Installation

This section will guide you on how to install the rotating hand strap of your tablet.

## Installing the Rotating Hand Strap

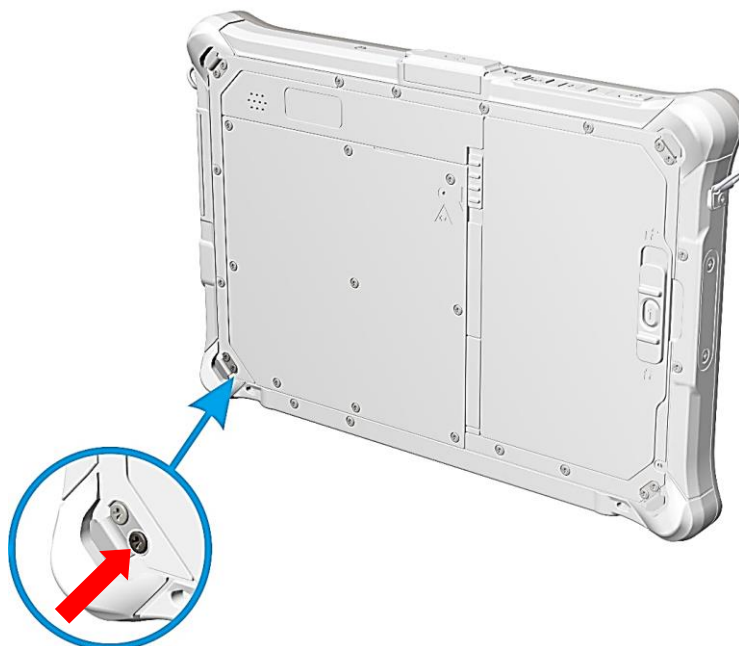
To install the rotating hand strap, follow the steps below:

1. Remove the 2 screws from the corner at the back of the device. Align the strap bracket (A) with the notch facing out.
2. Use the removed screws to mount on the strap bracket. Repeat the steps to complete all four corners of the tablet.



### NOTE

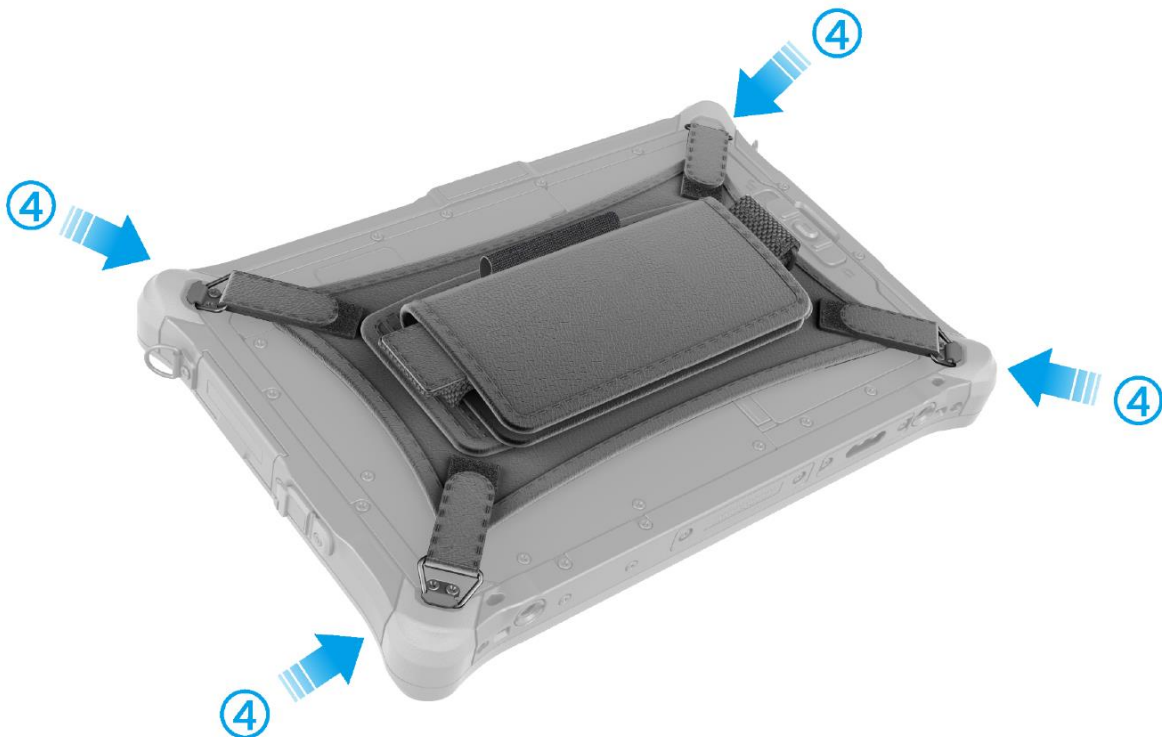
When mounting the bracket at the bottom left corner, please use the screw that comes with the rotating hand strap and replace the existing screw, as illustrated below.



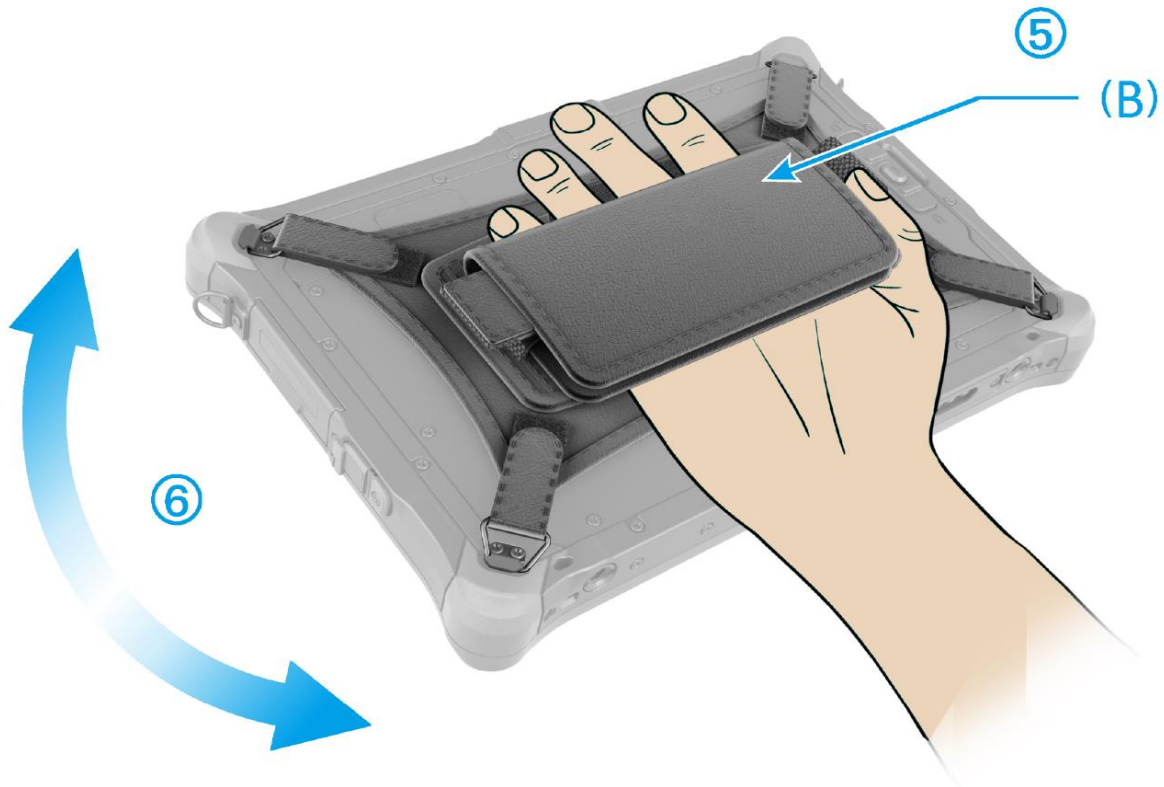
3. Insert the steel loop into each of the 4 corner straps.



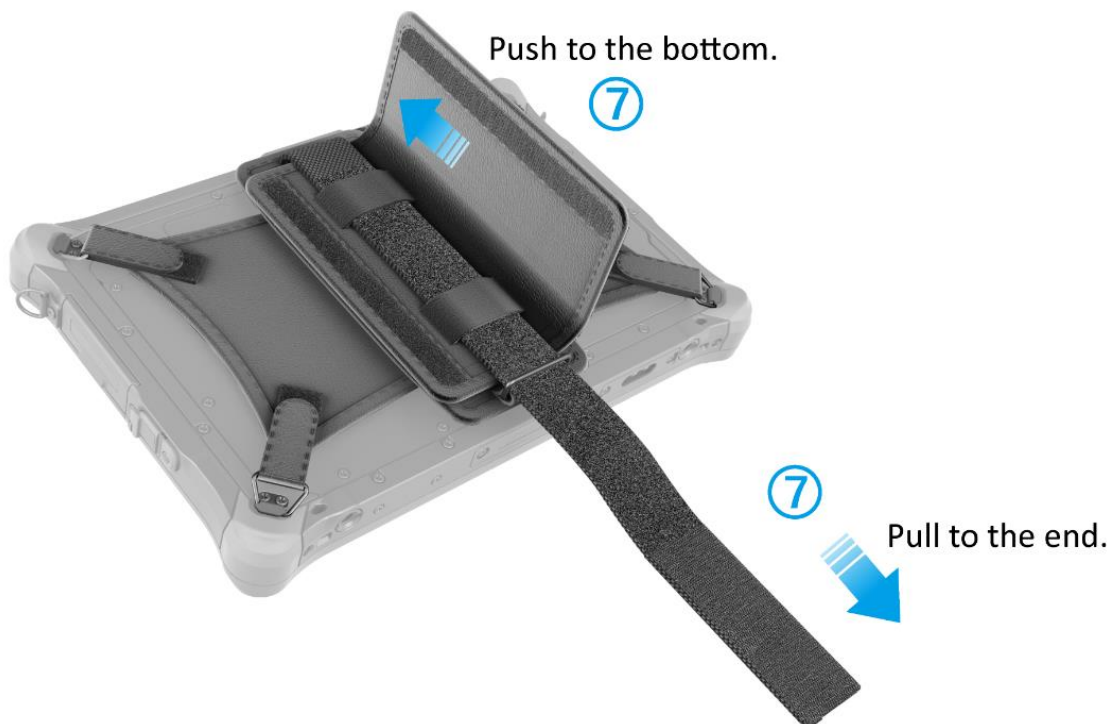
4. Hook the steel loops of the rotating hand strap on the corner brackets and tighten the corner straps.



5. Move your hand inside the (B) part of the rotating hand strap.
6. Fix the rotating hand strap firmly so that the tablet does not come off, when turning/moving the device.



7. Adjust the cinch strap of the rotating hand strap.



8. Lift the end of the rotating hand strap.
9. Fix the cinch strap accordingly to turn it into a kickstand.

