

# QUICK START GUIDE - S14

THANK YOU FOR PURCHASING THE COMPUTER.

THIS GUIDE PROVIDES A QUICK SETUP OF YOUR COMPUTER.

# DURABOOK

## Package Contents

Laptop PC



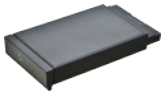
AC adapter



Power cord



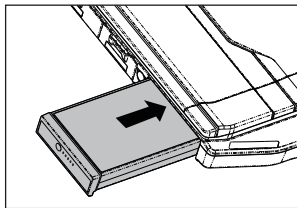
Li-ion Battery



Standard configuration items.

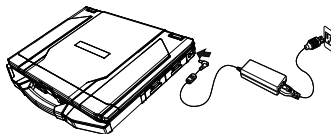
## 1. Install The Battery

Insert the battery to the battery compartment. Push completely until the battery locks into place.



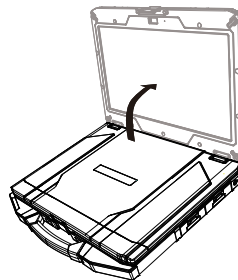
## 2. Connect The AC Adapter

The AC adapter powers up the device and charges the battery.



## 3. Power On

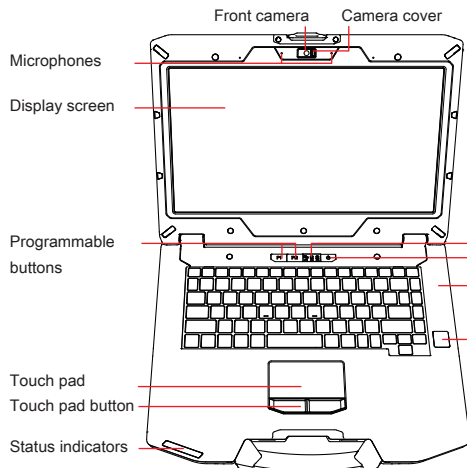
Lift the display cover up to the upright position, then click the power button.



NOTE: For more information, see User Manual on the device or at [durabook.com/support](http://durabook.com/support).

# QUICK START GUIDE - S14

**DURABOOK**



Docking connector (optional)

RF pass-thru connectors x3 (optional)

Thunderbolt 4 x2 HDMI RJ-45 MicroSD card reader



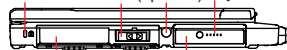
Nano SIM card Smart card reader (optional)

Audio combo jack USB 3.2 Gen 1 RJ-45



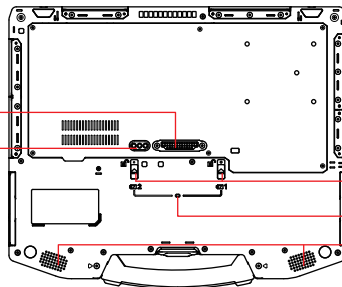
2nd battery compartment (optional) USB 3.2 Gen 2 RS232

Kensington lock slot SSD (optional) Stylus (optional) Physical battery indicator



ExpressCard 54 (optional) Main battery compartment

Smart card reader (optional)  
2nd serial port (RS232) & USB 3.2 Gen1 (optional)  
Barcode reader (optional)



62+009714+00