

QUICK START GUIDE - R8

THANK YOU FOR PURCHASING THE COMPUTER.

THIS GUIDE PROVIDES A QUICK SETUP OF YOUR COMPUTER.

DURABOOK

Package Contents

Tablet PC



AC adapter



Power cord



Stylus
& tether

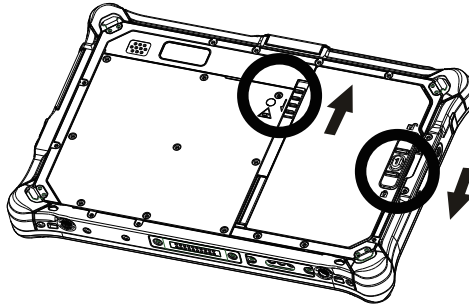


Stylus holder
& screws

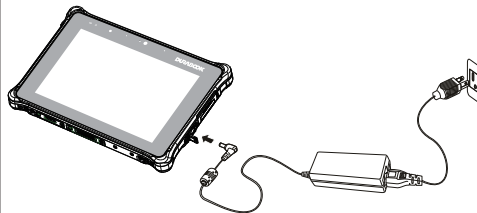


Standard configuration items.

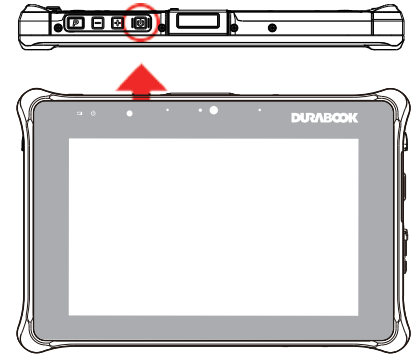
1. Install The Battery
Align and insert the battery into the compartment. Slide the latch to the lock position to secure the battery.



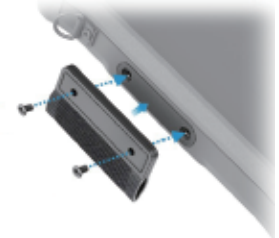
2. Connect The AC Adapter
The AC adapter powers up the device and charges the battery.



3. Power On
Click the power button.



Install The Stylus Holder
Align and secure the stylus holder on the left side of the tablet PC with the supplied screws.



NOTE: For more information, see User Manual on the device or at durabook.com/support.

QUICK START GUIDE - R8

