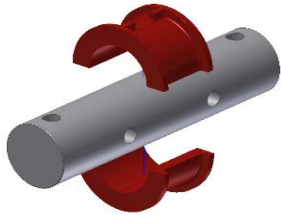
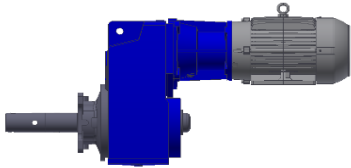


## AUGER OPTIONS



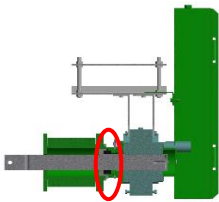
**Bearings**

- Hard Iron
- Urethane
- UHMW
- Graphite



**Drives**

- Electric, Belt Driven
- Electric Gearmotor
- Hydraulic



**Seals**

- Standard lip seal
- CAT Metal Face Seal
- Submersible



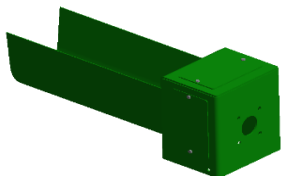
**Flighting**

- Helicoid
- HD Helicoid
- Sectional Hardox
- Full or Half pitch
- Tapered



**Replacement Ends**

- Replacement Ends



**Troughs and Adapters**

- Painted mild steel U-troughs
- Stainless steel
- Trough adapters for mounting drives



- Extended bolt pads
- Hangar extensions
- Flighting

**Heavy Duty (HD)**