



MAY/JUN 2023
Volume 51 Issue 3



Established in 1972

**MBCA Mission Statement: To Elevate The Mercedes-Benz Experience
Through Knowledge, Comraderie, and Exceptional Events**

DIAMOND MINERAL SPRINGS RESTAURANT

Highland (Grantfork), Illinois

Sunday, May 21st

Our May event will be hosted by Craig and Cindy Masterson on Sunday, May 21st. **Please join us at 11:00 am for a family-style lunch at the Diamond Mineral Springs Restaurant (DMSR)** <https://www.diamondmineralsprings.com>. DMSR is located at 1 W Pocahontas Rd, Highland (Grantfork), IL. By the most direct route, the restaurant is an easy 35-mile drive from downtown St. Louis.

In 1888 the Diamond Mineral Springs Health Spa and Resort was opened. The associated hotel was torn down in 1957, but the restaurant dining room (1897) and dance hall (1892) look much the way they did when they were built over a century ago, making DMSR Madison County's (and maybe Illinois's) oldest restaurant in continuous operation.

The restaurant specializes in family-style meals. Meals are served with bowls of cole-slaw, beets, mashed potatoes & milk gravy, homestyle green beans, and buttermilk biscuits & apple butter. The entrée specialty is fried chicken, but other entrees available are baked or BBQ chicken, chicken & dumplings, livers & gizzards, country ham steak, boneless ribeye pork chops, roast pork & dressing, homemade pork sausage (with a German sweet & sour red cabbage), fried walleye, beer-battered cod, fried or coconut shrimp, country fried steak and surf & turf. Those who "need" dessert can choose from a selection of their famous "Foot-Hi" pies !

After lunch, those interested, and weather permitting, will proceed to the **Copper Dock Winery**, a short 8-mile drive, due east, located at 498 700 N, Pocahontas, Illinois. The winery has outdoor patios and decks overlooking a scenic lake. Live music is provided on the weekends. <https://copperdockwinery.com/>

Please RSVP to Craig (bigv8@swbell.net) by May 14th to let him know of your attendance.

EUROPEAN AUTO SHOW

Sunday, June 11th

MINI of St. Louis

The **St. Louis European Auto Show** is an annual event that features European marques, cars, and trucks built in Europe. All proceeds raised go to a charity in the St. Louis area. The St. Louis Arc has been the charitable partner since 2016.

Vehicles on display include Ferrari, Audi, Lotus, BMW, Mercedes, MG, Bugatti, Porsche, Lamborghini, Ducati, and many more. This free event has been a St. Louis tradition since 1987 and occurs each year. St. Louis Arc continues as the charitable partner for this year's event. Located at Mini of St. Louis at 40 Sunnen Dr, St. Louis MO, the event is from 11:00 AM – 2:00 PM CDT.

Our St. Louis Gateway Section will once again have its tent set up and would certainly enjoy having you join us with your MB, whether new or old. Bring it and join the fun !

Early registration is \$30 and tickets are available at:

eventbrite.com/e/2023-st-louis-european-auto-show-hosted-at-mini-of-st-louis-tickets-358597042407

Please let Rick know that you are planning to join us at: rick.siefert@att.net or 314-435-1903.

RIVER BOAT CRUISE, GRAFTON WINERY, &

FAST EDDIE'S

Sunday, July 9th

Enjoy a leisurely cruise along the Mississippi River, from Grafton Harbor, south to Chautaugua and back to Grafton. **The Hakuna Matata is a 49-passenger tour boat that will take us on a wonderful adventure on the Illinois and Mississippi Rivers.** It's an all-weather, 53', 49-passenger tour boat. There are seating and café tables on both the upper and lower decks. The cruise is made even more comfortable as the boat has restrooms and the Tiki Bar, offering a cash bar and light snacks.

After our cruise, we'll make a stop at the **Grafton Winery & Brewhaus**, which offers a variety of award-winning wines and a variety of beer on draft, along with hand-crafted cocktails. The Brewhaus boasts two large patios overlooking the confluence of the Mississippi and Illinois Rivers.

Departing the Brewhaus, we'll head to **Fast Eddies in Alton**, where the food bar serves good quality eats at a cheap price. What started almost a Century ago as a small-town bar has become a destination place for people all over the world.

Stay tuned for fine details of what will assuredly be a fun day for all, but in the meantime **reserve you spot on the private river cruise by sending a \$20/person check made payable to "MBCA, St. Louis Gateway Section" to Joan Walsh, 13301 Wood Creek Ct, St. Louis, MO 63141.** You can also contact Joan for further details at 314-517-5389 or stljoan64@yahoo.com.

**2023 MBCA
SAINT LOUIS GATEWAY SECTION
Officers and Board Members**

SECTION OFFICERS

President Rick Siefert
rick.siefert@att.net
314.435.1903

Vice President Frank Perry
frankperry401@msn.com
314.839.4862

Secretary Luella Perry
brsholan@yahoo.com
314.839.4862

Treasurer Dana Faerber
ronfaerber@sbcglobal.net
314.434.4269

BOARD MEMBERS

Patti Siefert
patti.siefert@att.net, 314.378.0432

Jan Lupardus
jlupardus@charter.net, 619.851.3422

Bob Frank (**Newsletter Editor**)
rsfrank1@aol.com, 636.273.9820

Kay Frank (**Newsletter Editor**)
kay.frank7@gmail.com, 636.273.9820

Jonathan Leggs (**Webmaster and Membership Chair**)
jleggs@gmail.com, 314.809.3763
<http://stlgateway.mbca.org> (SLGS website)

Alicia Monfrinotti
monfriusa@charter.net, 314.369.8474

Ken Koehler (**Central Region Director**)
skkoehler@att.net, 317.919.4601

PRESIDENT'S MESSAGE

HELLO ST. LOUIS GATEWAY SECTION MEMBERS !

The fun continues ! St. Louis Gateway Section members enjoyed this year's **Member Appreciation Reception** on Saturday, March 11th, at Mercedes-Benz of Chesterfield, as General Manager, Daniel Branca and his staff hosted an exceptional event for us !

And long-time member and club advocate for decades, Jay Schuessler, hosted a very enjoyable visit and lunch to Architect, **Charles King's Mid-Century home/museum** in Belleville, Illinois, on Saturday, April 22nd.

Our next three events are also assuredly going to be ones that you won't want to miss. We have lunch planned at the **Diamond Mineral Springs Restaurant, along with a visit to the Copper Dock Winery** on Sunday, May 21st, the **European Auto Show** on Sunday, June 11th, and a **River Boat Cruise, the Grafton Winery, and Fast Eddie's** on Sunday, July 9th.

Also, consider joining fellow St. Louis Gateway Section members, along with our many other friends within the Central Region, for **Daimlers in the Music City**, in Nashville, TN, June 15th-18th. Our hosts have certainly put together an event for us to see and enjoy so much of what Nashville has to offer.

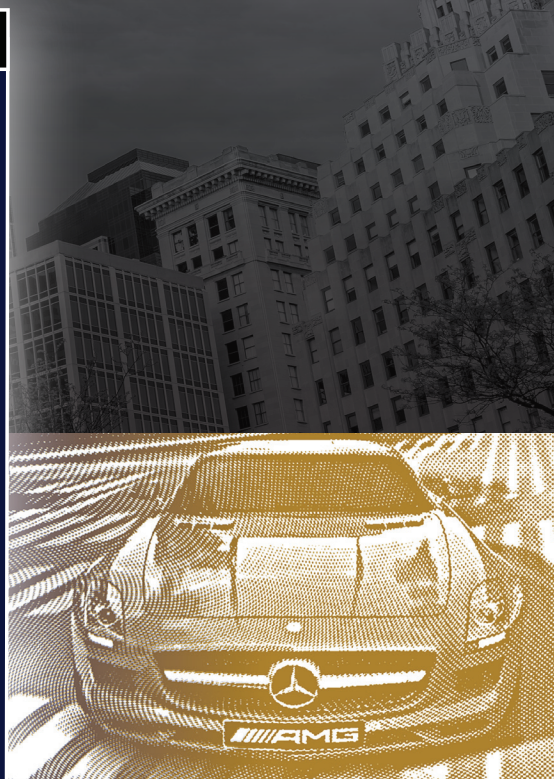
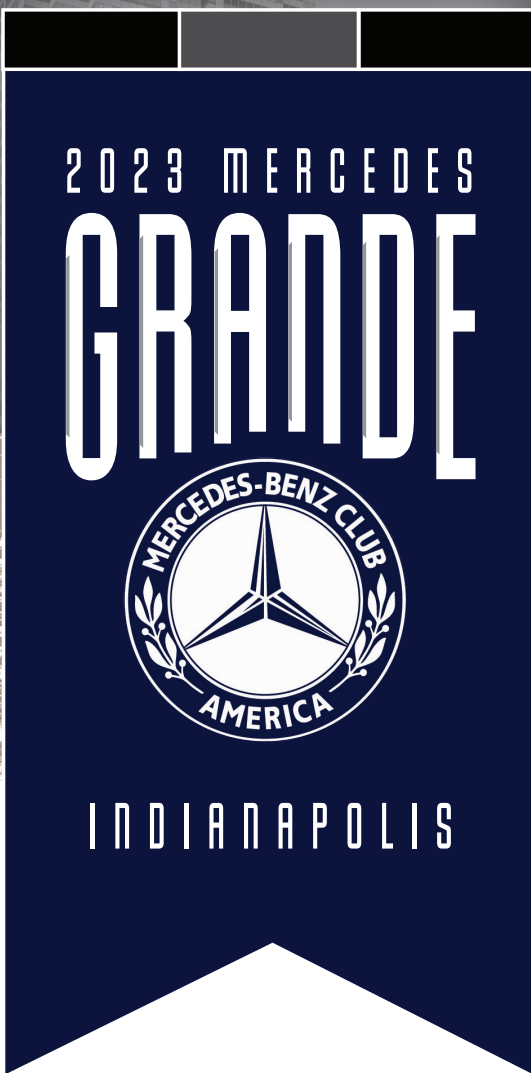
We presently have the month of August open for an event or activity. **Please let me know if you would be willing to host something for us in August.**

Our long-time members and exceptional Newsletter Editors for almost eleven years, Bob & Kay Frank, are moving out of the St. Louis area. Unfortunately, for our Section, this means that they are retiring from our Board and Editorship. **Of course, we are all happy for this new chapter in Bob & Kay's life, but we are in desperate need of a replacement Editor(s). If you may have an interest in possibly taking on this position for us, please contact me.** The job is not as difficult to handle as one might think.

Gute Fahrt Liebe Freunde (Have a Good Trip Dear Friends !)



**Rick Siefert
President
St Louis Gateway Section**



Thursday, 9/7

- Tech Talks & Guest Speakers
- MBCA Fashion Show/Car Show & Luncheon
- Mercedes-Benz New Car Extravaganza and Lifestyle Exhibition

Friday, 9/8

- Tech Talks & Guest Speakers
- Rally Drives and Tours Presented by the Mercedes-Benz Club of America & Artomobilia
- MBCA Medallion Rally Luncheon
- Hullabaloo Street Festival, Drive-In Car Show, and Concert

Saturday, 9/9

- Mercedes Monumental Classic Car Show at Artomobilia
- The Grande Celebration Awards Dinner
- Kids Zone Exhibit Play Station & Driving Experience

Sunday, 9/10

- Rally Drives and Tours Presented by the Mercedes-Benz Club of America & Artomobilia
- Silo Auto Club Racing Simulator Challenge

September 7-10, 2023

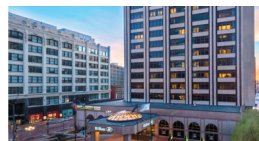
A Celebration of all Things Mercedes-Benz

Four Days of Mercedes-Benz
Culture, Causes, People,
Lifestyle, Technology,
and Cars.

REGISTER NOW!



qrco.de/mercedesgrande
Save \$50 per person by purchasing
the VIP Ticket Package.



**BOOK YOUR
STAY TODAY!**



qrco.de/mghotel

We have partnered with Indianapolis Downtown Hilton Hotel & Suites to help accommodate you during your visit from start to finish. This is the host hotel for many of the Mercedes-Benz events, and they are nothing short of the best.

Access the MERCEDES
BENZ CLUB OF AMERICA
special rate of \$179.00
per person plus taxes.
When you use promo
codeGRANDE

We Understand Commitment

At Edward Jones, we deliver candid guidance and personalized investment strategies to help you plan for and realize the possibilities of your future – for you, your family and generations to follow.



Dan Valle, AAMST™
Financial Advisor
247 W Lockwood Ave
Webster Groves, MO 63119
314-961-1321

MKT-1952H-A © 2022 EDWARD D. JONES & CO., L.P. ALL RIGHTS RESERVED.



Setting the Standard in Fine
European Car Repair Since 1973
**REID VANN LUXURY
IMPORT SPECIALIST
SERVICE & SALES**

- Full-Service Mechanical Facility
- Bosch Certified Fuel Injection Repair Facility
- Scheduled Maintenance Services
- Extended Warranties Honored
- Aftermarket Parts and Accessories Available For Sale & Installation
- Track Event Preparation

9331 Manchester Road
St. Louis, MO 63119
314.968.4100
(1 block east of McKnight)
www.reidvann.com



**MEMBER OF THE MERCEDES-BENZ, BMW,
PORSCHE, AUDI, & FERRARI CLUBS OF AMERICA**

During a recent visit to southern California, club members Joan and Joe Walsh visited the Mercedes-Benz Classic Center in Long Beach. The “state-of-the-art” one year old facility is located directly across from the Long Beach airport on Lakewood Boulevard. The Classic Center is where Mercedes purists go to have concours quality restorations performed on their prized specimens. During their visit, Joan and Joe saw several restorations and “re-fitments” in progress from states including Tennessee, New York, California, and Ohio. The Center specializes in complete restorations but also handles smaller jobs. The Center prides itself on bringing vintage Mercedes back to showroom condition. Presently, the Center employs 5 full-time restorers, and they claim to stock a vast inventory of OEM parts for most Mercedes made from 1950 through the 1990’s.



Joan and Joe previously owned a 1959 190SL and currently own a 1969 280SL and have sourced parts from the Center for both cars. Through the years, Joe has spoken to “parts specialist” “Colby” (seen left with Joe) at the Center.



Mercedes-Benz of Chesterfield General Manager, Daniel Branca, and his staff hosted a wonderful Member Appreciation Reception for St. Louis Gateway Section Members on Saturday, March 11th. The dealership provided attendees with a wonderful dinner from Il Bel Lago and the club provided the wine.

The newest members, Daniel Branca, Dennis Hummel, John Lamberg, Frank Petkovich, Don Strong, and Bill and Diane White were introduced and welcomed to our close-knit group.



Plaza Motors Company

11830 Olive Boulevard | Creve Coeur, MO 63141
(314) 266-5469 | PlazaMercedesBenz.com



A masterpiece of intelligence.

You don't measure a car's efficiency just at the gas pump. It's also something you feel in its confident agility. How it moves into traffic, or negotiates a surprise. It's how an E-Class always feels right for the times, and in the moment.

Mercedes-Benz



DENTS

EXPRESS

WWW.DENTSEXPRESSL.COM

(636) 324-8361
13836 MANCHESTER ROAD
MANCHESTER, MO 63011



BEFORE & AFTER



*For reliable, compassionate, consistent in-home care,
choose Seniors Home Care.*

— SINCE 1987 —
SHC™ **Dignified Care** ♥
...with compassion
SENIORS HOME CARE

Helping seniors live independently in their homes since 1987.

- ✓ Companionship ✓ Meal Preparation ✓ Light Housekeeping
- ✓ Personal Care ✓ Transportation ✓ Medication Reminders



Kit Whittington RN, BSN
Founder • SHC

Ryan Whittington C.D.P., CEO
2nd Generation • SHC

314.962.2666 SENIORSHOMECARE.COM



Our love for Mercedes-Benz is rivaled
only by our passion for restoring them.

Specializing in Mercedes-Benz repair.

122 NORTH FIRST STREET
PACIFIC, MO 63069
PH: 636-271-6095

16360 TRUMAN ROAD
ELLISVILLE, MO 63011
PH: 636-422-1234

WWW.PRO-TECHCOLLISIONCENTER.COM

Mercedes-Benz of St. Louis

Your New
Mercedes-Benz
is
Waiting



Mercedes-Benz of St. Louis
Highway 40 & Hampton
(314) 647-2400 • MBSTL.com



**SAVE YOUR CAR FROM
ROCK CHIPS!!**



THE MASTERY OF PAINT PROTECTION FILM

314.717.1000

www.STLAUTO SHIELD.com

2024 MERCEDES-BENZ GLE450E FINALLY FILLS THE GAP

www.caranddriver.com By Andrew Wendler

Select versions of plug-ins were earmarked for earlier North American debuts, but word is that European demand proved so strong they've been in a holding pattern. The new 2024 GLE450e is the first GLE model sold here with a plug-in-hybrid powertrain and a significant electric range.

For the 2024 GLE450e's powertrain, the fossil-fuel side of the equation relies on a turbocharged 2.0-liter four-cylinder rated for 248 horsepower and 295 pound-feet of torque. The electric componentry consists of a 134-hp synchronous motor that provides an additional 325 pound-feet of torque, drawing on a lithium-ion battery pack with a usable capacity of 23.3 kWh. The tag team is rated for a combined 381 ponies and 479 pound-feet, placing it above both the GLE350 (255 horses and 295 pound-feet) and the GLE450 (375 horses and 369 pound-feet).

Mercedes pegs the 60-mph time of the GLE450e at 5.8 seconds, a full 1.2 seconds swifter than the automaker's 7.0-second claim for the GLE350 and just 0.5 second behind the GLE450's stated 5.3-second time. It's tempting to think of the 2024 Mercedes-Benz GLE450e PHEV as a baby step to the electric future or as a placeholder for

drivers who remain skeptical regarding the promised EV Babylon. And without a doubt, it is both of those things.

But the GLE450e is also a fully baked PHEV that operates with seamless precision in any environment while ensconcing its passengers in the same level of luxury and features as the rest of the GLE lineup. It's tranquil at any speed, largely thanks to the dogged persistence with which the software favors electric operation in nearly every driving situation. In town, on the highway, or on the rural two-lanes of the Smoky Mountains, the GLE450e displays remarkable restraint, dialing in assistance from the internal-combustion engine only when absolutely required. Indeed, my co-driver and I engaged in quiet conversation for a long enough time that we were startled when the four-cylinder fired up to aid the nearly depleted battery.

Official EPA fuel-economy and range estimates for the GLE450e are pending, and Benz officials were cagey about nailing down a firm EV-only range number. Still, in our hands, the GLE450e covered an indicated 43 miles of electric range during combined city and rural driving in a decidedly typical driving fashion.

The GLE450e is built alongside the rest of the GLE lineup at Mercedes-Benz's facility in Tuscaloosa, Alabama. Look for the GLE450e to arrive in U.S. showrooms late this summer.



SAVE-THE-DATE

June 15-18, 2023

MBCA Central Region Event

“Daimlers in the Music City”

MBCA Mission Statement:

“To elevate the Mercedes-Benz experience through knowledge, camaraderie, and exceptional events.”

Holiday Inn Express, Brentwood South/Cool Springs
8097 Moores Lane
Brentwood, TN 37027

Be sure to “save the date” for this one!

Plan to meet with both old friends and new while we see and enjoy so much of what Nashville has to offer.

Special room rates are \$139 (+added tax & fees) per night.

HOTEL RESERVATION DEADLINE IS APRIL 20, 2023.

The Registration Fee is \$110 per person & due by 6/1/23.

RSVP TO: Ken Koehler @ skkoehler@att.net.

A more detailed announcement & invitation will be sent in the next few weeks.

We hope to see you all there.



Attendees certainly enjoyed the tour and lunch that Jay Schuessler set up for us at the Charles King Mid-Century Modern Architecture Museum in Belleville, Illinois. Curator, Margaret Meyer, provided us with an enjoyable history of the home and Charles King's career. Jay also shared with us his near 40-year history as a Mercedes-Benz sales associate and the fact that Mr. King was his Godfather.

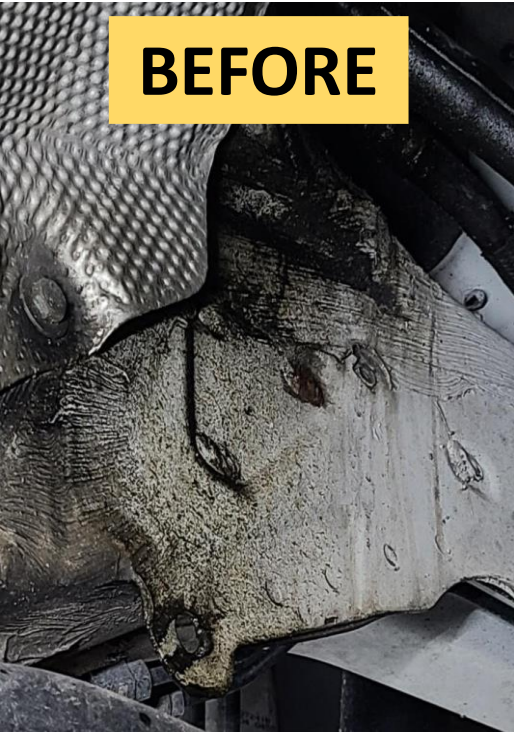
A check in the amount of \$250, made out to the Belleville Historical Society, was presented to the Curators. After lunch, Jay surprised Rick with presenting him with a beautifully framed poster of his 190SL and fellow SLGS member, Ed Knoll's, 300SL, from Mercedes Freude 2021.



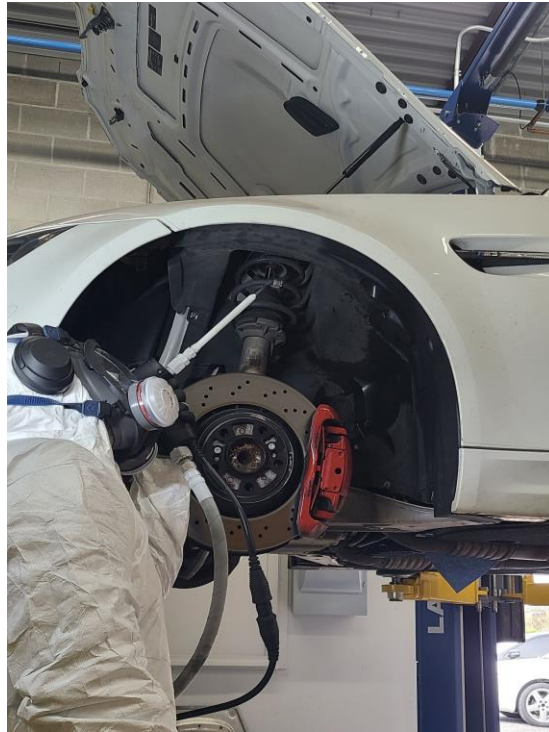


DRY ICE CLEANING

BEFORE



AFTER



UNDERCARRIAGE • WHEELS • WHEEL WELLS • ENGINE BAY

A non-abrasive, highly efficient cleaning process that removes dirt, grime, debris, and undercoating from your exotic, collector, or future collector car.

Call us today to discuss goals for your next project - scan the QR codes below for more information, or email us at iceeffectrestorations@gmail.com.



4132 SHORELINE DR. SUITE J, EARTH CITY, MO 63045

PH 314.276.5314

CARS AND PARTS FOR SALE

Audrey Biby has 3 SL's FOR SALE – a **2003 SL500**, only 31K miles ! \$19,900 OBO, a **1996 SL500**, 110K miles, \$7900 OBO, & a **1982 380SL**, 106K miles, \$3900 OBO. **Rick Siefert** (rick.siefert@att.net) for further information and pics.

540K 1938 Cabriolet A. Claret over tan leather, ex Sir Peter Ustinov, ex John Bond, shown at Pebble Beach, beautiful older restoration. \$1,490,000. **Shawn Dougan (Hyman LTD)** at shawn@hymanltd.com.

300SC Coupe, 1955. Blue over grey leather, fully restored by Charles Brahms, matching numbers, and colors. \$590,000. **Shawn Dougan (Hyman LTD)** at shawn@hymanltd.com.

200GE Cabrio, 1988. Beige grey over light brown Tartan upholstery, very well sorted, original G Wagen. \$98,500. **Shawn Dougan (Hyman LTD)** at shawn@hymanltd.com.

=====

FREE CLASSIFIED ADS TO ST. LOUIS GATEWAY SECTION MEMBERS

If you would like to place an advertisement, please mail or e-mail it by the 15th of the month to:

Rick Siefert - rick.siefert@att.net
846 Nardin Drive
Chesterfield, Missouri 63017

=====

USED U.S. ELECTRIC VEHICLE SALES JUMP AS PRICES FALL

www.Reuters.Com

By: David Shepardson

Used electric vehicle sales in the United States rose 32% in the first three months of 2023 as prices fell, data provider Cox Automotive said on Friday.

The group said the average retail listing prices for used EVs was around \$43,400, down 4% from the same quarter last year and significantly below the average new EV price of about \$59,000.

The group said used EV prices were probably cut due to aggressive price reductions by Tesla (TSLA.O) for new vehicles. "As the market leader pushes down prices for new EVs, used-vehicle prices follow suit," Cox said.

On Thursday, Tesla cut prices in the United States between 2% and nearly 6%, the fifth such cut this year. Washington will adopt stricter battery sourcing requirements on April 18 that will limit many EV tax credits.

In the first quarter of 2023, more than 225,000 EVs were sold, according to initial estimates by Kelley Blue Book, accounting for approximately 7% of new-vehicle sales.

ST. LOUIS GATEWAY SECTION

2023 Remaining Events

May 21st

**Diamond Mineral Sprint Restaurant
& Copper Dock Winery**
Highland, IL

June 11th

St. Louis European Auto Show
MINI of St. Louis

June 15-18th

**MBCA Central Region Event
"Daimlers in the Music City"**
Brentwood, TN

July 9th

Boat Tour, Grafton Winery & Fast Eddie's
Alton, IL

August

TBD

September 7th-10th

Mercedes Grande
Indianapolis, IN

September 24th

Fall Annual Picnic
Chesterfield Central Park, E. Pavilion

October 8th

Fort De Chartres – Fall Drive
Prairie Du Rocher, IL

November

Annual Planning Meeting

December 3rd

Holiday Party
Greenbriar Hills Country Club

Results

Successful transactions have happy buyers... and sellers.



Make us your first call

HYMAN LTD.™

INTERNATIONAL MERCHANTS OF EXCEPTIONAL MOTOR CARS

314-524-6000 / www.hymanltd.com

2019 Copyright Hyman Ltd - St. Louis, Missouri



11714 ST. CHARLES ROCK ROAD
ST. LOUIS ♦ MO ♦ 63044

*Intersection of Hwy70 and St Charles Rock Road
1 mile west of the airport*

CONTACT JEFF HOMSHER AT:
(314) 348-5774
or
JEFF@ITSALIVEAUTO.COM
VISIT US AT
<ITSALIVEAUTO.COM>

- FROM SIMPLE REPAIRS to ROTISSERIE RESTORATIONS
- STATE-OF-THE-ART EQUIPMENT & OVER 70 YEARS EXPERIENCE
- AFFORDABLE RATES : \$75.00/HR
- CONVENIENT PICKUP & DELIVERY
- EXTENSIVE RUST REPAIR & FABRICATION
- INTERIOR/CONVERTIBLE TOP REPAIR/REPLACEMENT

HIGH QUALITY, GREAT VALUE & TOTAL CONVENIENCE



WE'VE RESTORED NUMEROUS 190SL & 280SL MERCEDES & CURRENTLY HAVE 7 IN STOCK

PLEASE WELCOME OUR NEW MEMBERS

Since the last publication of the Gateway News, we are proud to announce and WELCOME the following new members:

**Ann Behrend-Uhls
Harold Hogarth
Dennis & Lynne Hummel
Neal Lang
Frank Petkovich
Don Strong
Robert Woods**

Welcome to the St. Louis Gateway Section of the Mercedes-Benz Club of America. We have over 200 memberships within a 200-mile radius of St. Louis.

The success of our Club depends on the participation of the members to our scheduled activities. Thank you for joining. We look forward to seeing you at our next event.

LOYAL RENEWING MEMBERS

**Kenneth & Marilyn Barkett
Paul Bobby
James & Trudy Bruchas
Dan Duncan
Dana & Ronald Faerber
Randy Hawkins
Joan Hecker
Paul Hittler
Greg Johnston
Timothy Kramer & Pamela Super
Mark Mandelbaum
Tripp & Shannon Manheimer
Craig & Cindy Masterson
Robert Pomeroy
Bernie Sunier**

Thank you for your continued support of our club !

Don't see your "significant other" listed? Then you may not have entered them as associate members with MBCA when you joined. It costs nothing to make them associate members. Simply log on to your MBCA account, scroll down to "Associate Member", click on "Edit", and enter the name. That's it.

MBCA Membership Application

Please print clearly

Full name

Associate member (spouse or dependent)

Address

City

State

Zip

()
Home phone

()
Business phone

E-Mail address

Occupation

Mercedes-Benz cars now owned (model/year, list additional cars elsewhere)

☐ New Member or ☐ L Renewing Member (check one)

If renewing, member number:

Interests: please check

☐ driving events

☐ car shows

☐ social events

☐ car care

☐ technical

☐ *The Star*

Enroll me as a member for (check one):

U.S.:

☐ 1 year (\$55) ☐ 2 years (\$107) ☐ 3 years (\$157)

Make check payable to MBCA (U.S. funds only); Visa or Mastercard also accepted.

International (including Canada):

☐ 1 year (\$65) ☐ 2 years (\$127) ☐ 3 years (\$187)

Canadians and overseas: Visa, Mastercard, American Express, Discover, international money orders, or checks payable in U.S. funds.

Applicant's signature

Date

Applicant's section preference (see list in magazine)

Sponsor's signature and member number (optional)

Membership dues include six issues of *The Star* magazine yearly. If using a credit card, please complete the following:

☐ Visa ☐ Mastercard ☐ Am. Express ☐ Discover

Account number

Expiration Date

www.mbca.org or 800-637-2360

MBCA, 1907 Lelaray St., Colorado Springs, CO 80909-2872
719/633-6427, Monday-Friday, 8 AM to 5 PM Mountain Time



Frontenac Detailing

Automotive appearance specialists



www.FrontenacDetailing.com



Complete Premium Detailing • Paint Correction • Ceramic Coatings
Service All Makes & Models • Complementary Shuttle
All Work Done at Honda of Frontenac

885 S. Lindbergh
Frontenac, MO 63131
Call or Text 314-226-7411



Honda of
FRONTENAC

Choose Your Mercedes Dealer

Whether you have a small breakdown or need major repairs, NAA has got your back.

Use your local Mercedes Benz Dealer or any ASE Certified facility of your choice!



Protect Your Investment

Get the best vehicle protection plan available.



National Auto Alliance

314-936-5595

www.nationalautoalliance.com



Quality Service

You can always feel confident when you're working with us. We offer the best customer service and peace of mind for your vehicle.

Our coverage specialists listen to your needs and provide the best protection available.

Your satisfaction means everything to us!