



GATEWAY NEWS

MERCEDES-BENZ CLUB OF AMERICA SAINT LOUIS GATEWAY SECTION

"Serving the Greater St. Louis Area since 1972 !"

Gateway News – MAR APR 2014

Volume 42 Issue 2

Visit Chocolate Chocolate Chocolate Company St. Louis Saturday, March 8th

On Saturday, March 8, 2014 we will meet at the Chocolate Chocolate **Warehouse Facility at 5025 Pattison Ave** for a tour and tasting. Chocolate Chocolate Chocolate Company has a 30-year tradition of creating the finest handmade chocolates and candy.

After years of studying the art of handcrafting small batches of premium chocolates, founder Dan Abel came back to his hometown of St. Louis, Missouri to open his own candy company. In February of 1981, the young candy maker opened his first Chocolate Chocolate Chocolate Company store. Manufacturing fresh chocolates at the retail store was a new concept, breaking the mold of mass production.

The tour lasts about 30 Minutes and we would like everyone there **at 10:00 sharp as we have a 12:00 lunch reservation** at Zia's on the Hill, located at 5256 Wilson Ave. Please **RSVP to Steve or Marti Jacquemin at Martijacquemin@gmail.com or 314-822-2903 by March 5th.**

Visit Our Central Library St. Louis Saturday, April 12th

Free Parking at Olive & 15th. Enter the lot on 15th. **Validate your parking ticket, and meet your guide, in the library at the reception desk at 3:00 pm.**

It fills the block and will fill your mind with wonder. Dramatic, well yes, but come see for yourselves. This truly is one of the jewels of St. Louis. After renovation, a century of grime, dust and damage have been wiped away. However, it retains all the wonders of a building from the gilded age.

Knowledgeable docents tell the story of this important public building. Citizens of St. Louis thought it was important to have this resource, and supported its construction with their personal donations.

The second portion of our tour is in the Special Exhibits Room. Our library has gathered an amazing collection of very old prayer books, bibles, dictionaries and more. We will see them,

and if you know of something you would like to see from the collection, please send an email to Kacey Cowdery. She can pass that information along to the Library staff. They can have it available. And thirdly, Let's Eat! **Dinner at 5:00, at Lucas Park Grille, 1234 Washington Ave.** You can leave your car in the library's free lot, or move it to the pay lot just north of Washington. You may order from the menu, and pay the restaurant for your meal.

Please send an email or call Kacey Cowdery. The library and the restaurant need a firm count **not later than March 28.** Contact Kacey: kaceycowdery@swbell.net, 314-968-5041.

Detailing Clinic Extravaganza ! St. Louis Gateway Ladies Day Out ! Plaza Mercedes-Benz Saturday, May 10th, 2014

Make your reservations **NOW** for an Automotive Detailing Clinic not to be missed ! The date of this Activity is scheduled for **Saturday, May 10th, from 11:00 a.m. to 2:30 p.m.** Long-time St. Louis Gateway Section member and **Plaza Mercedes-Benz Sales Representative, Jay Schuessler**, along with Rick Siefert, will host this event at the Plaza Mercedes-Benz Dealership.

St. Louis Gateway Section members will discover what is necessary to transform a "nice car" into a true concours winner. And what perfect timing, as the **St. Louis European Auto Show** will be taking place less than a months later. Several well-known detailing professionals will also be included in the day's activities. Jay and Plaza will be graciously providing us all with food and drink.

PLEASE contact Rick Siefert (314.435.1903 or rick.siefert@att.net) to RSVP for what will assuredly be a fun and educational event.

Calling All St. Louis Gateway Ladies ! !

Please join us on **Saturday, May 10th** for a **Ladies Day Out**. This activity will include lunch with good friends and "non-car-related" conversation at **La Bonne Bouchee**, an authentic French patisserie, café, and bakery of French confections !! If you would like to be a part of this fun outing, **PLEASE contact Patti Siefert at 314.378.0432.**

2014 MBCA SAINT LOUIS GATEWAY SECTION

Officers and Board Members

SECTION OFFICERS

President oliverjeanne2012@hotmail.com 636.561.2616	John Prater
Vice-President frankperry401@msn.com 314.839.4862	Frank Perry
Secretary dodiejerroy@yahoo.com 314.961.8881	Dodie Frank
Treasurer ronfaerber@sbcglobal.net 314.434.4269	Dana Faerber
President Emeritus rick.siefert@att.net 314.435.1903	Rick Siefert

BOARD MEMBERS

Alan Barker alan-barker@att.net 314.962.6857	
Ed Barutio edbarutio2@att.net 636.273.9046	
Mimi Barutio mimibarutio@att.net 636.273.9046	
Sally Edmiston rfedmiston@sbcglobal.net 636.536.1033	
Bob Frank (Newsletter Editor) rsfrank1@aol.com 636.273.9820	
Kay Frank (Newsletter Editor) kay.frank7@gmail.com 636.273.9820	
Mike Fults mndfults@yahoo.com 636.575.2161	
Jim Gruss (Membership - Webmaster) 314.452.3974 webmaster@gatewaymercedesclub.com http://stlgateway.mbca.org (SLGS website)	
Russell Hughes 300sl@sbcglobal.net 636.587.2999	
Patti Siefert patti.siefert@att.net 314.378.0432	
Cliff Reyle (Central Regional Director) Cliff.reyle@youthvillages.org	

PRESIDENT'S MESSAGE

St. Louis Gateway Section members- As we enjoy the prospect of more-pleasant weather coming up, balanced with the dread of more wintry blasts, snow, ice, skidding, crashing and burning, I am consumed with jealousy of those Section members who are basking in the sun in Florida, Mexico, or the south of France. Those of us old enough to remember when every winter in St. Louis was pretty much like the one we've had so far this year seem to form the aforementioned group which is basking as described above. (Lucky dogs!) Ah, well, spring will be here soon enough, bringing rain, mud, and road repair to test our patience in other ways. Our snowbird brethren and sisters will return to join us at the events we've planned for the warmer months, which brings me to the point of this message.

As you know, we have an event planned each month in the year, aimed at providing the Section's membership with a way to commune with their fellows at an agreeable venue, sometimes for dining, sometimes for education, sometimes for a great drive (we are, after all, a car club), and sometimes for a cocktail or glass of wine. The majority of our members attend these events, and, from what I've seen, have a great time.

However, another group of our members seems to be absent from most, and sometimes all, of our events, which bothers me no end. I certainly understand joining a car club to get an outstanding national magazine, a newsy and well-written monthly local newsletter, access to a great website and Facebook page, varying discounts on Mercedes-Benz products and services, etc., etc.. Not to be a nag, but I feel those members who don't, for whatever reason, join the group at these painstakingly-planned and executed monthly events are missing out on a very large part of the "benefits package" that goes with membership in the Mercedes-Benz Club.

I would like to encourage those of you who aren't regular attendees at our events to consider joining us at the next one that fits your schedule, and see if you find it worthwhile. Each month, I hear from a member who says he or she has been a member for years, but seldom attend the events, and this month is planning to join us. I relish this type of planning, and hope that more of you who we don't see regularly will make an effort to avail yourselves of the fun times that are available at Section events, and get more active. Whether it's the tour of Chocolate, Chocolate, Chocolate's plant in March, or the Central Library Tour in Downtown St. Louis in April, I hope to see you at the next event. I'll bet you'll have fun. Please refer to the event schedule in this and every newsletter, and join us.

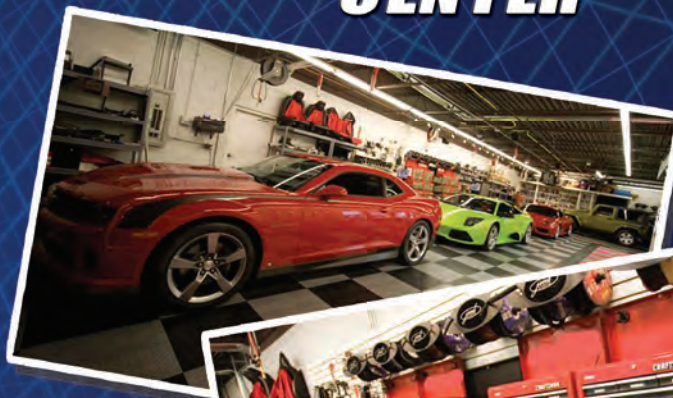
John Prater



SALES • SERVICE • INSTALLATION

WORLD CLASS VEHICLE ENHANCEMENT CENTER

- **IPOD INTEGRATION**
- **WINDOW TINTING**
- **CLEAR AUTOMOTIVE BRAS**
- **FULL SERVICE DETAILING**
- **REMOTE CAR STARTERS**
- **QUALITY AUDIO & VIDEO SYSTEMS**
- **STEALTH RADAR & LASER DETECTION**



**ST. LOUIS'S MOST TRUSTED SOURCE
PROVIDING SUPERIOR CUSTOMER
SERVICE FOR OVER 15 YEARS**

jmlaudio.com 636.343.2020

A & G Auto Spa & Mobile Detailing

Convenience: You can have your choice of bringing your vehicle to the shop or we can come to your home or office for all your vehicle detailing needs

Shop Address: 1520 Gravois Rd., High Ridge, MO. 63049
(314) 575-0953 www.ag-autospa.com



At A&G AutoSpa, we are true professionals specializing in the care of the world's finest automobiles.

**Note: Mercedes Benz Club Members get 10% Off our regular pricing.
This does not include gift certificates or any other discounts**

Mercedes Sales Growth Tops BMW On Compact Car Surge

From: <http://europe.autonews.com>

FRANKFURT (Bloomberg) -- Mercedes-Benz brand sales grew faster in January than sales at BMW and Audi, helping the carmaker to further close the gap in deliveries with its premium rivals.

Mercedes posted a 15 percent gain last month to 109,500 vehicles on a 32 percent surge for its compact cars. Sales at Audi rose 12 percent to 124,850 cars, while BMW advanced 9 percent to 117,200 vehicles.

Daimler CEO Officer Dieter Zetsche is rolling out 30 new vehicles by the end of the decade, 13 of which will have no predecessor, in an effort to regain the sales advantage the company lost to BMW in 2005 and Audi in 2011.

"Daimler's new models are giving them a lot of tailwinds," said Frank Biller, a Stuttgart-based analyst at LBBW. "They are currently benefiting from the model cycle but shouldn't relax. They need to continue to introduce new vehicles and fight for the customer."



Fratelli's
RISTORANTE
EST. 1983



MANGIAMO ITALIANO!
"LET'S EAT ITALIAN!"



Fine Family Dining

FAMILY OWNED & OPERATED
SINCE 1983

SERVING ITALIAN CUISINE
FROM OUR FAMILY RECIPES!

OPEN LUNCH & DINNER
MONDAY - FRIDAY

DINNER ONLY
SATURDAY & SUNDAY



636.949.9005
www.fratellistorante.com
2061 Zumbuhl • St. Charles, MO

St. Louis Gateway Section Member's Cars



2007 SLK 280

Owners: Dennis and Lois Heldenbrand

Dennis and I have always had a love for fun cars. When in college, he had a 1969 Camaro and for years, I drove an RX-7. After driving SUVs for several years, I tried to talk Dennis into buying a Porsche and got as far as test driving a pre-owned one. However, while driving the "other" car, he saw the Mercedes SLK. Being a man of few words, he says, "That's the car you want." After the test drive, we were hooked. In the 80's, we had toured the Mercedes plant in Stuttgart and were fans of the German engineering.

So in November 2011, we bought the "little black car." Frankly, I saw it as another fun car but came up short when I noticed that it had to be washed after almost every outing. Plus a person, who shall not be named here, actually read the owner's manual in its entirety. Well, the keys usually do not wind up in my hands but who could complain about riding in such a great car. Our longest drive has been to Fort Worth, Texas, to visit my brother. He owns a red 2005 SLK 350 and is a member of the Fort Worth Section. Incidentally, he gave us our first year's membership in the St. Louis Gateway Section as a Christmas gift.

We are located in Jefferson City so the first Gateway event that we've attended was the dinner train out of Columbia. We hope to be able to attend more events in 2014. We're enjoying the Star magazine and looking forward to meeting more members of the Club to join in the car talk and driving events.

Finally, we hope our vanity license plate doesn't demean the status of an amazing automobile brand. Of course, there is a story that goes along with this. Our first sailboat was named Mac I and the bigger sailboat became Mac II. The acronym stands for "middle age crazy." So, we couldn't resist licensing the SLK as Mac III. From reading the Star and St. Louis Gateway newsletter, we're not the only people who are "crazy" about their Mercedes cars.



2007 SL600 AMG

Owner: Mike Froncheck (Collinsville, IL)

I owned several Mercedes vehicles in the past and knew the quality and feel of driving a Mercedes. I previously owned a 1989 330E and then a 1993 400SEL. My performance cars were Mustangs (1986 GT Convertible & 1991 LX which I still have) but I wanted more performance with better handling, so I looked for a Mercedes Convertible SL600 to fulfil my teenage dream of owning one. I could never afford one because of the MSRP - \$132,000, but now at age 47, I could afford a used one.

I was looking for a used Mercedes SL600 in the St. Louis area but could not find the type of engine displacement I wanted. Then I saw one in Dallas, Texas on the internet at a high-end car dealer called Ecarone.com. In February 2012, I found exactly what I was looking for, it was a 2007, black in color, Mercedes SL600 with the high performance V-12 engine, Twin Turbocharged, 510 Horsepower, with the AMG Sports Package. The 5.5 Liter, V-12 has 2 spark plugs and 3 valves per cylinder with a performance rating of 0-60 in 4.7 seconds.

I had the SL600 inspected prior to heading down to Dallas for a test drive and was sold. I trailered the car back to the St. Louis area. This car is bad to the bone. I purchased the car with 88,254 miles on it and took it to Michigan for a long road trip. I was impressed with the ride, very comfortable and the gas mileage specs show (City 13 /Hwy 19). I actually was getting 21 miles to the gallon.

This is an AWESOME car to drive and the handling around corners is amazing. With the Bose 8 speaker stereo system, it's clear and plenty loud with the top down, while driving down the highway. The only drawback to owning this car is the maintenance. When you replace parts on a high-end sports car, parts are not cheap. And since I had this car it didn't take long before I had to replace the two rear Michelin Pilot Sport tires, imagine that. But it's all well with it.



Take charge of your *financial future*

Call us today at
636.534.2086.

Since 1894, Ameriprise Financial has helped millions of Americans feel more confident about their financial future. As Ameriprise financial advisors, we remain true to our vision of always putting clients first.

Discover the one-to-one attention you deserve, backed by the strength of America's leader in financial planning*



Dan Hirsch, RFC®
Financial Advisor

14755 N Outer 40 Rd
Ste 500
Chesterfield, MO 63017

636-534-2000

dan.g.hirsch@ampf.com

www.ameripriseadvisors.com/dan.g.hirsch

Ameriprise Financial Services, Inc. Member FINRA and SIPC. *Ameriprise helped pioneer the financial planning process more than 30 years ago. Our unique *Dream > Plan > Track*® approach is about more than just numbers, it's both science and art. We have more financial planning clients and more CERTIFIED FINANCIAL PLANNER™ professionals than any other company in the U.S. based on data filed at adviserinfo.sec.gov and documented by the Certified Financial Planning Board of Standards, Inc. as of Dec. 31, 2011. © 2012 Ameriprise Financial, Inc. All rights reserved.



St. Louis and The Automobile

From: <http://www.garversview.com/>

The very first horseless carriage to see the streets of St. Louis was produced by Mr. J. D. Perry Lewis in 1893. Lewis had seen his first automobile while in Paris in 1892 with a group of students from the Smith Academy. Lewis said: "I would like to have one like that." Upon his return to St. Louis he talked his brother out of an unused carriage and modified it with an electric motor and batteries. For many places, in the United States, the first horseless carriages utilized electricity rather than internal combustion engines as their motive power source. Mr. Lewis created quite a stir in the city, when he first took his invention for a spin, at the astounding speed of eight miles per hour. His first attempt would have an accident one evening in the 3000 block on Locust Street when the rear axle would break cleanly in half due to the weight of the batteries, which would end up on the ground. After a year and a half of experimentation he ordered a custom built carriage from a local manufacture, which he outfitted with a motor of his own design and build. This six passenger vehicle reached speeds of twelve miles per hour and demonstrated the practicality of the concept.

Cars You Have Never Seen Before

From: Ed Barutio



1922 Marmon 34B Speedster

Nordyke & Marmon entered the auto industry in a small way in 1902. By 1909 testing, prototypes and limited production had led to the four-cylinder Model 32. The Model 34 that came seven years later was a car way ahead of its time. The car's mostly aluminum overhead-valve six displaces 340 cubic inches, and while it seems that could be the reason for the Marmon's designation, there's more to it than that. "They called it a Model 34 because you got 34 hp according to the established formula at that time," said Ron Barnett, editor of the Marmon Club's Marmon News.



1930 Ruxton Model C Raunch and Lang Roadster

There were two front-wheel drive cars that came onto the scene just prior to the onset of the Great Depression, the Cord L-29 and the Ruxton Sedan. Ruxton's front-wheel drive campaign was short-lived and the less remembered. Despite its technological excellent and ingenuity, the car was introduced during a rough part of history and the company struggled to find its financial footing. The final Ruxton automobiles were built in 1931. Ruxton's featured a unique transmission setup which allowed the car to sit ten inches lower than other cars of its time.



1932 REO Royale Convertible Coupe

The Royale featured one-step lever-action chassis lubrication, thermostatically controlled radiator shutters, large 15 inch hydraulic brakes and a nine bearing 358 cu. in. straight eight engine. In addition, the Royale featured a vacuum-controlled clutch for automatic-like driving. A top speed of 90mph was guaranteed and at a cost in excess of \$3,000 it exceeded most people's expectations as it delivered style, innovation and individuality in a crowded luxury motor car market.

Uniquely, The Reo Royale was one of the first automobiles to be wind tunnel tested. With the attractive coachwork designed by the great Amos Northup of the Murray Corporation, it was also beautifully aerodynamic as its flowing lines and extensive exterior detail gave it an appearance entirely its own.

CARRYING ON THE CORDES LEGACY MERCEDES-BENZ DEALERSHIP BEGINNINGS IN THE ST. LOUIS AREA

By Dave Cordes, long-time St. Louis Gateway Section member

In 1956, my father, Harold Cordes, who at the time was a Studebaker-Packard Dealer in Alton, Illinois, was given the opportunity to add a franchise, Mercedes-Benz, to his existing dealership. He took that chance, even though at that particular time there were only approximately 300 Mercedes automobiles in the United States.

As years passed by there were more and more Mercedes coming into the United States and with more cars being sold, our business increased greatly. With Packard going out of business in 1958 and Studebaker in 1966, my father looked for an additional franchise and as such added Volvo in 1967.

In January, 1970, after returning from three years in the Army, I started my career in the automobile business. Joining my father, my mother, who was the Office Manager and my brother, who was in Sales, I started out in the Parts Department and was there for eight years before switching over to the Service Department.

In the early 1970's, my father started a pickup and delivery service for customers in the St. Louis and Metro East areas when their cars needed maintenance. He usually performed this service after the end of a long business day. As one can imagine, this courteous offering grew and grew and, as a result,

my wife, Liz, was added as an employee of the business. She did a lot of the pickup and delivery for the dealership.

In October of 1982, my father passed away, leaving the remaining family members with the responsibility of carrying on the Cordes Legacy. This occurred until August of 1985, at which time we sold the dealership to Mr. Tom Hennekes and his partner, Mr. John Ellis. The dealership was renamed, Alton European Imports with the two franchises of Mercedes-Benz and Volvo. I stayed on and worked in the Service Department.

In July of 1995, Mr. Hennekes closed the Alton Dealership and temporarily moved the Mercedes-Benz franchise to Market Street, in downtown St. Louis, renaming it Tri-Star Imports. It took two years to build a new dealership, thus moving to Ellisville, Missouri in 1997.

In June of 2005, my son, John, after just graduating from college, came to work for Tri-Star as a Service Advisor, being a third generation of the Cordes Family to be involved with the Mercedes-Benz automobile, since 1956, some 58 years.

John was hired with the idea that one day I would retire, which I did in March of 2007. He has been with the dealership now for over eight years and I am now back, working part-time, since August of 2009, as a Service Greeter.

BenzSeals, L.L.C. Convertible Hydraulic Specialists

We specialize in rebuilding the convertible hydraulic actuators for the Mercedes-Benz convertible automobile at a fraction of the cost of buying new. Our services include: Complete teardown and replacement of the cup seals, cap seals, port seals, piston rings and expansion rings. We then do a high pressure bench test prior to shipping your order. All of our work is guaranteed against leaks for five full years. We also have a core exchange program and detailed instructions available, so you will have everything you need on hand when you are ready to perform the R&R procedure. For more information visit us on the web, email us, or call Kevin direct.

There's only one "BenzSeals"



www.benzseals.com

Kevin R. Crane
Proprietor

1100 Kirkwood
Waterford, MI 48328

Ph. (248) 403-6276

Email: benzseals@xmail99.com

Why All This Year's F1 Noses Are So Ugly

From autoblog.com – by Jonathon Ramsey



If you're a serious fan of Formula One, you already know all about The Great Nosecone Conundrum of 2014. Those given to parsing each year's F1 regulations predicted the strong possibility of the so-called "anteater" noses as far back as early December 2013. Highly suggestive visual evidence first came after Caterham's crash test in early January, with further proof coming as soon as Williams showed a rendering of the FW36 challenger for this year's championship. That car earned a name that wasn't nearly so kind as "anteater."

Casual followers of the sport – or anyone who gets the feed from autoblog.com – probably don't know what's happening, except to wonder why the current year's F1 cars are led by appendages that would make Cyrano de Bergerac feel a whole lot better about himself.

The short answer to the question of ugly F1 noses is "FIA regulations and safety." The reason there are various kinds of ugly noses is simpler: engineers. The same boffins who have given us advances including carbon fiber monocoques, six-wheeled cars, double diffusers and Drag Reduction Systems are bred to do everything in their power to exploit every possible freedom in the regulations to make the cars they're building go faster – the caveat being that those advances have to work within the overall philosophy of the whole car.

The regulation changes dictate several measurements concerning the tip of the nose. First, the center of the nose of the car can be no higher than 18.5 cm from the reference plane of the car, which automatically makes the nose start to do the limbo, having instantly dropped 36.5 cm compared to 2013. The anteater look comes from that and one more line in the regulations that requires "a single external cross section, in horizontal projection, of more than 9000 mm squared at a point 50 mm behind its forward-most point."

After the safety imperative, every F1 team designer has said their number-one priority in 2014 is – as it was before this year – aerodynamics.

Going off the reservation, Red Bull chief designer Adrian Newey thinks the low noses are more unsafe than before, alluding to the possibility of snowplowing under the car in front instead of being launched over it. And rumors are that the FIA is looking at the "spear-like danger" of the new cars.

An advertisement for Sherman Auto Sales. The top section features three small images: a vintage car, a record player, and a collection of glassware. Below these is a large image of a black vintage car. The text describes the store's offerings and location. A red banner at the bottom contains the store's name and a discount offer.

Sherman Auto Sales, located in the industrial heart of Fenton, offers a variety of collectibles for all tastes, including vintage décor, signage, auto parts, toys and classic cars. There is truly something for everyone.

Visit us 10 am – 6 pm daily, 10 am – 5 pm Saturday, closed Thursdays, at 519 Rudder Rd. Ste B, Fenton, MO 63026 (directly behind JML Audio).

*ShermanAutoSalesInc.com
(636) 326-1616*

***Save 10% on your purchase with this ad!**

VINTAGE TREASURES • ANTIQUES • UNIQUE GIFTS • CLASSIC CARS

Sherman
Since 1946

*Maximum discount \$500

Yes, Membership does have its Privileges.

At Tri-Star Mercedes we are committed to providing the finest Mercedes-Benz experience in the area. For those of you, who have a special affinity to the Mercedes brand, be assured that we share that commitment. To us, it is the only brand and, the only brand we represent.

We agree that there is only one choice in cars. We hope, you agree there is only one choice in dealers.



One Mile West of Clarkson on Manchester
636-458-5222 • www.tristarmercedes.com

Tri-Star
one passion



Setting the Standard in Fine
European Car Repair Since 1973
**REID VANN LUXURY
IMPORT SPECIALIST**
SERVICE & SALES

- Full-Service Mechanical Facility
- Bosch Certified Fuel Injection Repair Facility
- Scheduled Maintenance Services
- Extended Warranties Honored
- Aftermarket Parts and Accessories Available For Sale & Installation
- Track Event Preparation

9331 Manchester Road
St. Louis, MO 63119
314.968.4100
(1 block east of McKnight)
www.reidvann.com



MEMBER OF THE MERCEDES-BENZ, BMW,
PORSCHE, AUDI, & FERRARI CLUBS OF AMERICA



Finally, senior care as
individual as your loved one.

Our personalized care is as individual as your loved one, from 30-Minute Quickvisits™ to 24/7 dementia care, tailored to your schedule and budget. Visit our website to learn more.

CALL US TODAY
To Schedule Your Free
RN Assessment

— SINCE 1987 —
SHC
SENIORS HOME CARE

MID COUNTY 314.962.2666 CLAYTON/LADUE 314.863.2667
WEST COUNTY 636.225.2600 SOUTH COUNTY 314.894.2666

SENIORSHOMECARE.COM

The 2013 Mercedes-Benz E-Class Ranks 1

From: usnews.rankingsandreviews.com

The 2013 Mercedes-Benz E-Class ranks 1 out of 14 Luxury Large Cars. This ranking is based on our analysis of published reviews and test drives of the Mercedes-Benz E-Class, as well as reliability and safety data.

Balanced performance, an ultra-luxurious interior and great safety and reliability ratings make the 2013 Mercedes-Benz E-Class a top choice among luxury cars.

The 2013 Mercedes-Benz E-Class is available with a myriad of engines choices, and auto writers say that even the base V6 provides plenty of power. A seven-speed automatic transmission is standard. The EPA says that the base E350 sedan gets 20/30 mpg city/highway, which is good for the class. Still, less powerful rivals like the BMW 528i earn better ratings. While many test drivers write that the E-Class doesn't offer the sportiest handling in the class, they also say that few cars can match its combination of composed handling and a comfortable ride.

The Mercedes-Benz E-Class is the 2013 Best Luxury Full Size Car for Families because it has the best combination of quality, size and family-friendly features in its class.



Curtains Now? Not A Problem.

Curtains | Shades | Hardware

We have hundreds of options in curtains and fabrics. Choose from finely crafted ready-made curtains in stock, or one of our custom styles.

Now featuring the entire line of Peacock Alley Bedding.

*Proud Sponsor of Downton
Abbey on Nine Network*

8119 Maryland Ave.
St. Louis, MO 63105
314-863-1112

thecurtainexchange.com

@TheCurtainExch





Reid and Liz Vann & Jerry and Cathie Wille



Prize Winner Mark Langenfeld



EVENT HOSTS Gary and Traude Wilson



Cathie Wille, Bill Valle, Paula Prater, Luella Perry,
Mimi Barutio and Kacey Cowdery



Nancy and Ron Varley



Ed and Linda Trujillo



Mark and Julie Langenfeld



June Michael and Crawford King



Mike and Sally Gaan



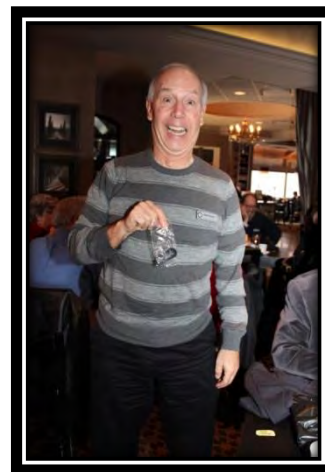
Ken and Nora Faerber



Prize Winner Bill Valle



Prize Winner Dodie Frank



Prize Winner Bob Frank



Jan and Marion Sims



Prize Winner Luella Perry



President John Prater
Welcoming Club Members

2014 CALENDAR OF EVENTS

MERCEDES-BENZ CLUB OF AMERICA
ST. LOUIS GATEWAY SECTION

Sunday, January 5th

New Year Brunch

Charlie Gittos - Chesterfield

.....

Wednesday, February 26th

Member Appreciation Reception

Tri-Star Imports

.....

Saturday - March 8th

Tour of Chocolate Chocolate Chocolate

Followed by lunch at Zia's On the Hill

.....

Saturday - April 12th

Tour of Central Library - Followed by lunch

Downtown St. Louis

.....

Saturday - May 10th

Detailing Clinic & Ladies Day Out

.....

Sunday - June 1st

St. Louis European Auto Show

Plaza Frontenac

.....

Saturday - June 28th

Day Lily Garden Tour - Glen Carbon, IL

Followed by winery picnic

.....

Saturday - August 23rd

Defensive Driving Program

.....

Sunday, September 14th

Annual Picnic - Faust Park

.....

Sunday - September 28th

Autos on Valhalla Car Show

.....

Sunday - October 26th

Driving tour - Churchill Museum

Westminster College - Fulton, MO

.....

Saturday, December TBD

Holiday Party

.....

January 2015 TBD

New Year Brunch

New Year's Luncheon

January 26, 2014

After giving in to Mother Nature on the first attempt, we were rewarded on our second attempt with a gorgeous day for the St. Louis Gateway Section's annual New Year's Luncheon. We gathered at Charlie Getto's in Chesterfield filling our reserved room. After some fine conversation including a description of all those New Year resolutions, we sat down for the lunch. As in the past the food was excellent and the service was outstanding. It was a great way to start the New Year and get rid of the post-holiday blues. I didn't hear of anyone getting a new Mercedes for the holidays but there was talk of possible new car purchases in the spring. After we finished our food, our club president, John Prater, welcomed everyone to the event and passed the platform off to the event host, Garry Wilson. Garry then held door-prize drawings for several gifts with Mercedes themes. Winners included: Dodie Frank, Mark Langenfeld, Luella Perry, Bill Valle, and Bob Frank. This brought the event to a close, but with several folks remaining to continue conversations. Our thanks go to Gary Wilson for hosting another great New Year's brunch and arranging such fine weather for the event. (see pages 14-16 for event pictures).

Mercedes G63 AMG 6x6 Is Somewhere On American Soil Right Now

From autoblog.com

By Steven J. Ewing



"Dear Mercedes: according to your Facebook page, it appears you've brought a G63 AMG 6x6 over to American soil for unsaid reasons. How convenient. I'm more than confident that its six headlock wheels wrapped in 37-inch tires, three axles, six-wheel drive and twin-turbocharged V8 would do a bang-up job of handling everything I could throw at it. And considering its top-notch interior that uses only the finest materials, I'd be able to tackle everything in the lap of indestructible luxury.

It looks as though your G63 6x6 is hanging out in the northeast right now, but listen, I'll make you a deal. Let me drive it from New York to Detroit. In fact, I'll draw a straight line between the two cities and make the 6x6 take that route. After all, this thing is more than capable. Mountains? Pfft. Neighborhoods? Ha! Lake Erie? I'll caulk the G and ford it."

CARS AND PARTS FOR SALE

Mercedes Winter Wheel Snow Tire package for SLK (R172, Model year 2012+), set of 4, like new condition with only 5343 miles of wear; Titanium Silver Finish, 10 Spoke, Wheel size 17" 7.5ET42, Michelin Primacy Alpin 225/45R17; <http://www.mbwheelandtire.com/wheel-and-tire/all-vehicles>; asking \$600. Please check with your MB service advisor (or tirerack.com) as to these wheels (lug pattern, size, offset, etc) seem to be able to fit other MB models. **Joe Pierro**, [Call: 314.258.0985] or jopiuk@sbcglobal.net.

SL550 (R230) Car Cover and Storage Bag, new in box, never opened, Part number: B Q 6 60 0068; asking \$75. **Joe Pierro**, [Call: 314.258.0985] or jopiuk@sbcglobal.net.

Bosch right side European model headlight assembly (including turn signal housing) for W126 models (from a 1985 280SE) 0302 050 007/8 \$75. **Also, Bosch left side European model headlight assembly** (including turn signal housing) for W123 models (from a 1984 300D). 0302 653 002 (123-820-93-61) \$70. **Bob Nauss**, robert_nauss@umsl.edu or 314.954.2879.

450SL, 1976, Astral Silver w/ red interior. 72,500 miles. Hardtop with rolling stand, original soft top in A-1 condition. This gem is original and has been properly maintained by Legend and Machens Mercedes-Benz in Columbia, MO. It is ready to drive anywhere/any place at your leisure. Yours for \$15,500. **Michael Koch** at cedarcrestvineyards@gmail.com or 573.230.6497 [Call: 573.230.6497].

560SL, 1987, Midnight Blue with gray interior. Engine excellent, paint good, new top, hard top, and good tires. Asking \$11,000. **Paul Temme**, ptemme@att.net or 314.616.1616 [Call: 314.616.1616].

FREE CLASSIFIED ADS TO ST. LOUIS GATEWAY SECTION MEMBERS

ADS WILL RUN FOR (2) CONSECUTIVE NEWSLETTERS.
TO RE-RUN, ADS MUST BE RESUBMITTED.

If you would like to place an advertisement, please mail or e-mail it by the 15th of the month to:

Rick Siefert
rick.siefert@att.net
367 West Manor Drive
Chesterfield, Missouri 63017

Winter Charging System Maintenance Bud's Benz December 2013 Newsletter

The following things should be done to your car in preparation for cold weather, but if it is already cold weather, these things can still be done.

1. Check the strength of your antifreeze, most any repair shop can do this and usually they will not charge anything to do this. The test will tell you how cold the temperature can be that your antifreeze can withstand. Make sure it can withstand the weather in your area.
2. Check your entire charging system. This includes, visually inspecting the battery and the cables. Look for any corrosion on the cable ends that attach to the battery. Most shops can run a charging system on your car. It will check the battery, the starter and the alternator.



The terminals on these 2 batteries are all corroded. If your battery looks like this - it is time for a new battery.

3. Because the cold weather can slow down the chemical reaction of the chemicals in your battery. The average battery can lose more than 50% of the cranking amps at 0 degrees - F. which means it loses the power to start your car.
4. An original equipment battery is what you should use for your make of car. For example, a Mercedes Benz (dealer only) battery if you own a MB, a BMW battery (dealer only) if you own a BMW, ETC.

The non-dealer, or aftermarket batteries are not made to the original dealer specifications and will cause problems later on.

5. Make sure you use the correct weight of oil in your car. The thicker oil will cause starting problems, because it gets thicker in colder weather. Thicker is not always better.
6. Check your wiper blades, both front and rear. If they are streaking or smudging, it is time to change them.
7. Check your tires. Check the air pressure and the tread on the tires. If the tread is low, get your tires replaced. Bad tires can cause accidents, blow outs, and hydroplaning.

PLEASE WELCOME OUR NEW MEMBERS

Please help our membership grow. Member referrals are the best way to recruit new members. And, for each referral, you, as an existing MBCA member, will receive a FREE month of club membership, simply added on to your current membership period.

To the many of you who referred your family, friends, neighbors, and business associates to become a part of our Club, thank you so much for contributing to the success of the St. Louis Gateway Section.

Since the last publication of the Gateway News we are proud to announce and WELCOME the following new members:

John Lewis
Richard and Catherine Tepper
Chad Dressing
Rudy Beck and Sandy Polly

Also, please note a correction from last month as we incorrectly listed Rudy Beck and Sandy Polly as "Rudy and Polley Beck". We apologize.

Welcome to the St. Louis Gateway Section of the Mercedes-Benz Club of America. We have nearly 270 members within a 200-mile radius of St. Louis & invite you to join us at our Events.

The success of our Club depends on the participation of the members to our scheduled activities. Thank you for joining. We look forward to seeing you at our next event.

The St. Louis Gateway Section Officers & Board Members

St. Louis Gateway Section on facebook



Mercedes Benz Club St. Louis Gateway Section

We want to make sure that all section members know that your section has a facebook page!! Log on and Like Us.

MBCA Membership Form

Please print clearly

Full name _____

Associate member (spouse or dependent) _____

Address _____

City _____ State _____ Zip _____

(_____) (_____) _____
Home Phone Business Phone

Occupation _____ E-mail address _____

Mercedes-Benz cars now owned (Model/Year) _____

☐ New Member ☐ Renewing Member (check one)

If renewing, Member Number _____

Interests ☐ Driving Events ☐ Car Shows
☐ Social Events ☐ Car Care
☐ Technical ☐ The Star

Please enroll me as a MBCA Member for:

☐ 1 Year (\$49) ☐ 2 Years (\$95) ☐ 3 Years (\$139)

Make check payable to MBCA; Visa, MasterCard, Discover and American Express also accepted. If using a credit card, please complete the following

☐ Visa ☐ MasterCard
☐ Discover ☐ American Express _____
Expiration Date _____

Account Number _____

Applicant's Signature _____

St. Louis GatewaySection

Applicants Section Preference Sponsor's Member # _____

Annual membership dues include six issues of The Star.

Phone: 800/637-2360 8 AM to 5 PM M-F (Mountain)

Mail: MBCA, 1907 Lelaray St., Colorado Springs,
CO. 80909

Web: www.mbca.org

ST. LOUIS GATEWAY SECTION
17500 GARDEN RIDGE CIRCLE
WILDWOOD, MISSOURI 63038

Tour of Chocolate Chocolate Chocolate

St. Louis

Saturday, March 8th

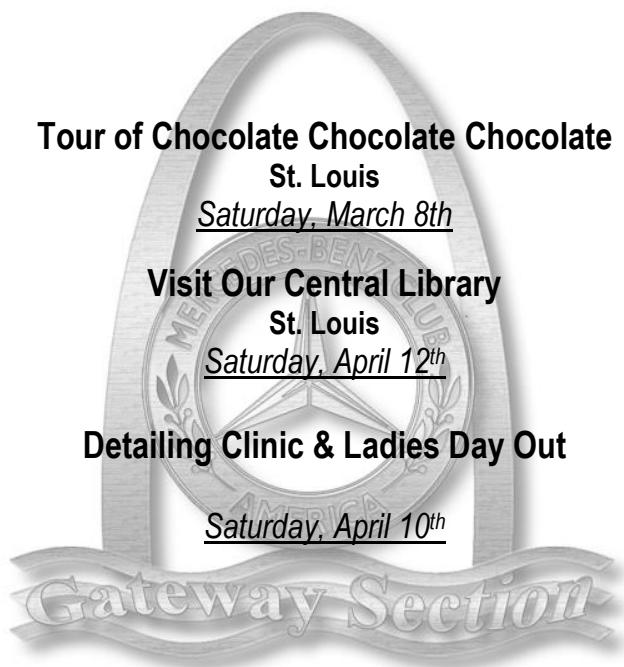
Visit Our Central Library

St. Louis

Saturday, April 12th

Detailing Clinic & Ladies Day Out

Saturday, April 10th



3220 South Brentwood Blvd.
Webster Groves, MO 63119

314 518.6111

SAY NO TO CHIPPED PAINT



3M CERTIFIED
INSTALLERS

CLEARAUTOBRA.COM