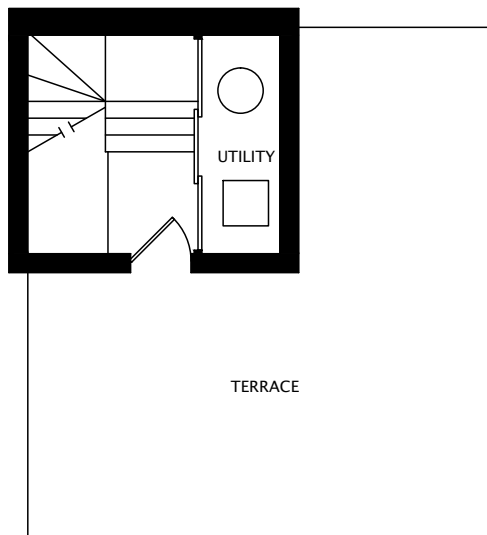
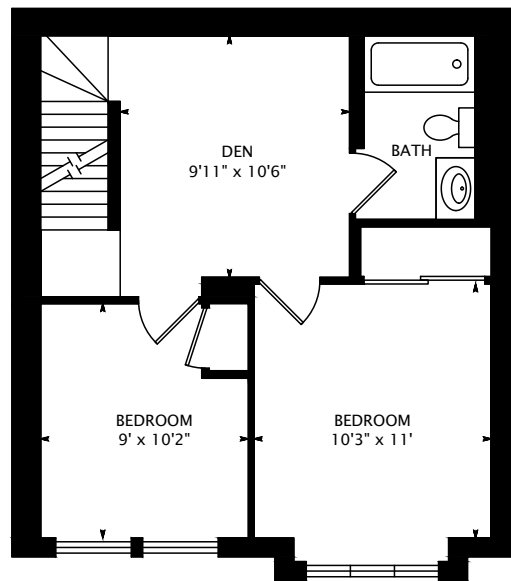


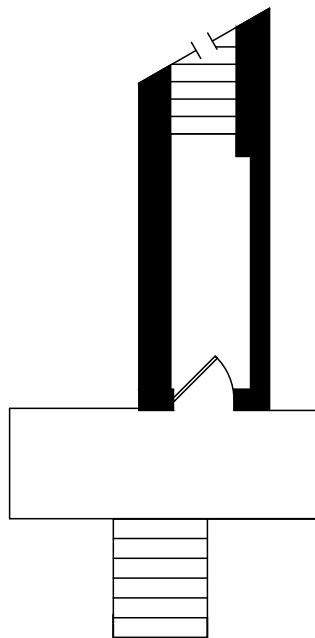
5 EVERSON DRIVE #1139



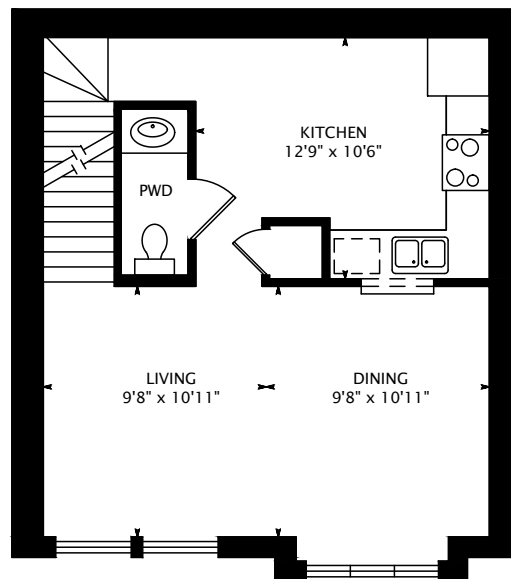
THIRD FLOOR
135 SQUARE FEET



SECOND FLOOR
510 SQUARE FEET



GROUND FLOOR
63 SQUARE FEET



MAIN FLOOR
510 SQUARE FEET

1218 SQUARE FEET
+ 320 SQUARE FEET TERRACE

interactive tour: toursler.com/5-everson-1139



DATE: MARCH 15, 2016
DIMENSIONS, AREAS, LAYOUTS AND DETAILS ARE APPROXIMATE
AND SHOULD BE CONSIDERED ILLUSTRATIVE ONLY.

THE WEIR TEAM, SALES REPRESENTATIVES
KELLER WILLIAMS ADVANTAGE REALTY, BROKERAGE
DIRECT: (416) 578-5400, OFFICE: (416) 465-4545
EMAIL: listings@theweirteam.ca, WEB: theweirteam.ca