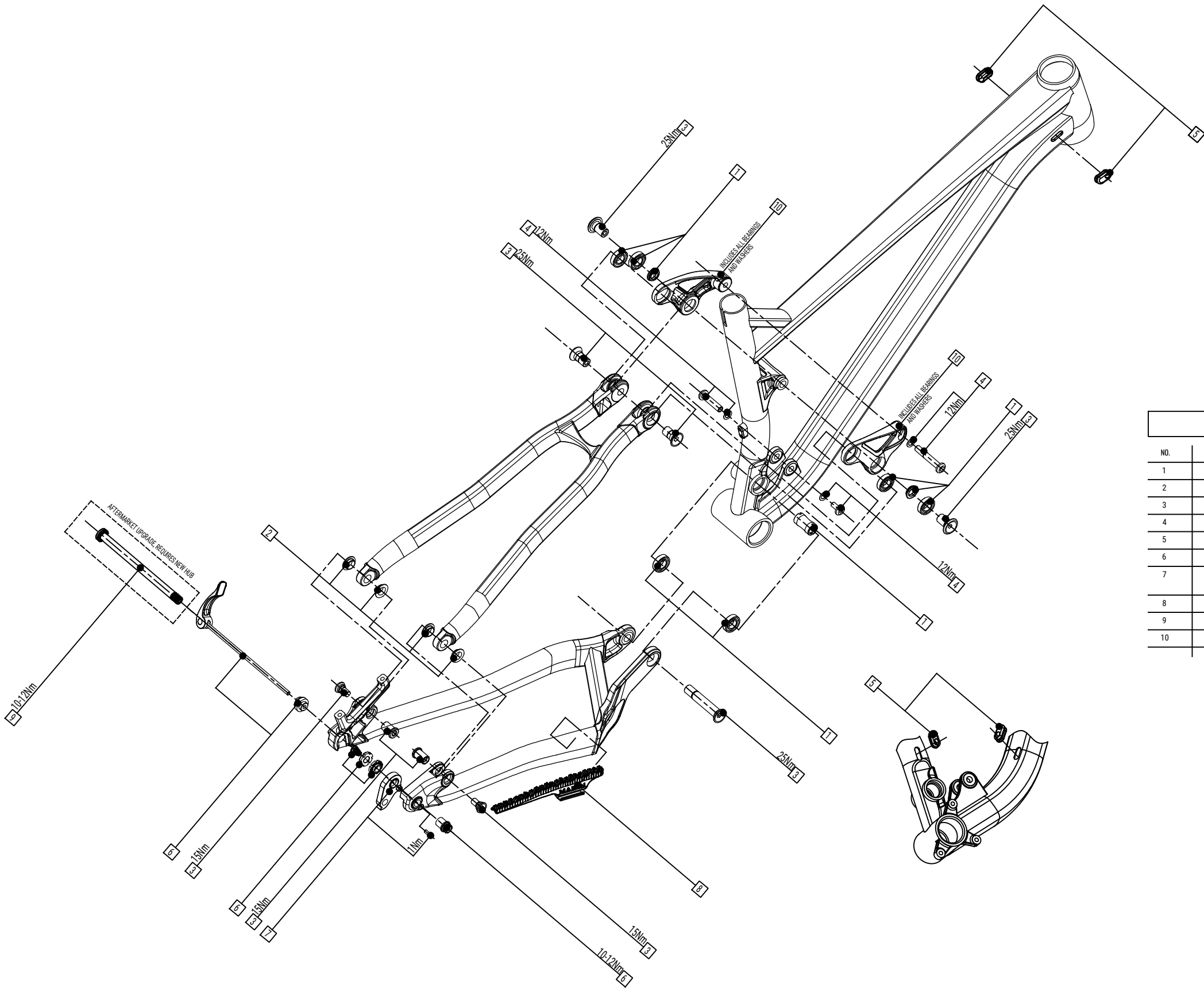
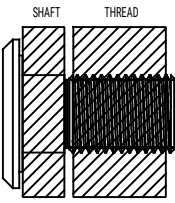


'17 HAWK HILL '18 HAWK HILL 1



SERVICE PARTS			
NO.	ARTICLE CODE	DESCRIPTION	NOTES
1	726902	BEARING KIT A, RUBBER SEALED BEARING 69102RS 12X24X6, QTY 6	
2	726910	J-3 IGUS PLANE BEARING KIT, QTY 4	
3	727350	PIVOT BOLT KIT D	
4	726917	SHOCK BOLT KIT C	
5	726914	INTERNAL CABLE ROUTING RUBBER GROMMET KIT	
6	727334	CLOSED 9 TO 12 QR ASSEMBLY 135MM (142MM)	OE SPEC AXLE
7	726295	HANGER #40 AND MOUNTING BOLT (M4X0.7X10MM SOCKET COUNTERSUNK HEAD CAP SCREW)	
8	732772	CS PROTECTOR SERIES 3 ALLOY	DOES NOT COME STOCK BUT IS COMPATIBLE
9	728551	BOLT ON AXLE KIT 142X12MM	AFTERMARKET UPGRADE, REQUIRES NEW HUB
10	726907	ROCKER LINKAGE, MULTITRAC #1	

TECHNICAL DATA		
FORK AXLE TO CROWN	OE SPEC: 509MM	MAX: 519MM
REAR WHEEL TRAVEL	120MM	
TIRE COMPATIBILITY	FRONT: 27.5X2.5"	REAR: 27.5X2.5"
HEADSET DIM	UPPER: ZS44	LOWER: ZS56
SHOCK INFO	EZE: 190MM	STROKE: 51MM
SHOCK HARDWARE	UPPER: 22.2XM8	LOWER: 22.2XM8
SEATPOST DIAMETER	30.9MM	
SEAT COLLAR DIAMETER	34.9MM	
CHAINLINE	49MM	
REAR BRAKE MOUNT	POST MOUNT 160MM/ MAX 180MM	
REAR AXLE	141 CLOSED 9-12 (STOCK)/ UPGRADABLE TO 142X12	
BEARING SPEC	6901V2RS 12X24X6 QTY: 6 IGUS PN: JFM-121405 12X14X5 QTY: 4	



CAUTION
FOR ALL BOLTS SHOWN ON BIKES RECOMMENDED TO APPLY GREASE AND THREAD LOCKER

THE APPLICATION AREA SHOWN AS LEFT
THREAD LOCKER ON THREAD AREA ONLY
GREASE ON SHAFT AREA ONLY
FOR THOSE BOLTS WITHOUT SHAFT, THREAD LOCKER NEEDED ONLY.

XS: 156MM S: 206MM M: 252MM L: 262MM XL: 295MM

REAM DEPTH

MARIN
BIKES CALIFORNIA