

Panther 200C

200 Series Teflon Coated Conventional Corrosion Control

The Panther 200C is a high quality general purpose pressure feed sprayer designed for corrosion control applications. This spray gun is engineered for spraying in harsh environments and has the break up power to atomize heavy high solid coatings.

Panther 200C

Features

- ➔ Forged Aluminum Body
- ➔ Stainless Steel Fluid Passages
- ➔ Designed For Corrosion Control
- ➔ Teflon Hard Coat Body for Easy Clean Up
- ➔ Air Caps to Atomize Heavy High Solid Coatings



Panther 200C

"High Solid Atomization"

Available Outfits

2 Quart Outfits

(Includes 5' Hose Assemblies)



**2 Quart
(Economy)**

OP200C-130



**2 Quart
(Bandit)**

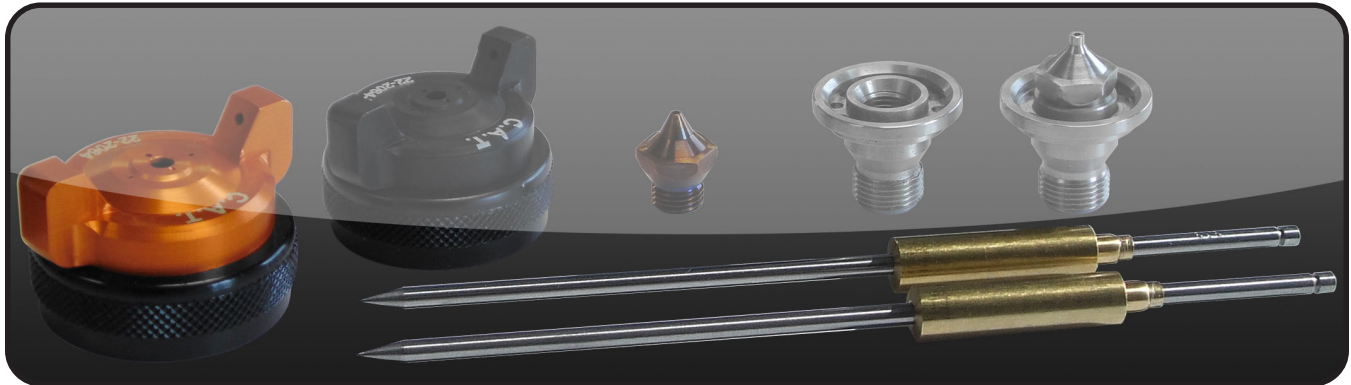
OP200C-600

Tank Outfits

Tank Outfits Include 25' Hose Assemblies and are available in 2.5 gal, 5 gal, 10 gal, 12.5 gal and 15 gal sizes.

(Includes 25' Hose Assemblies)





Nozzle Chart for Panther 200C

Material Type	Fluid Orifice x Air Cap	Maximum Pattern Width	Pressure / Siphon
Very Thin less than 16 sec. Zahn #2 inks, dyes, solvents, stains	1.1 mm x 2030	10	S
Thin 16 to 20 sec. Zahn #2 lacqers, enamels, primers, sealers	1.1, 1.4 mm x 2030	10	S
	1.1, 1.4 mm x 2900	10	S
Medium 21 to 30 sec. Zahn #2 automotive base coat enamels, primers, epoxies, urethanes, automotive clear coat	1.4, 1.8 mm x 2704	12	P
	1.4, 1.8 mm x 2765	15	P
	1.4, 1.8 mm x 2777	14	P
	1.4, 1.8 mm x 2797	17	P
	1.4, 1.8 mm x 2900	10	S
Heavy over 30 sec. Zahn #2 heavy body primers, high solid enamels, high solid automotive coatings, adhesives	1.8 mm x 2765	15	P
	1.8 mm x 2797	17	P
	1.8, 2.2 mm x 2064T	14	P
	2.8 mm x 2062T	12	P

Air Caps for Panther 200C

Air Caps	Pressure/ Siphon	Max Inlet Pressure	CFM @ Max Inlet Pressure
22-2064T	Pressure	80 PSI	22 CFM @ 80 PSI
22-2062T	Pressure	80 PSI	19 CFM @ 80 PSI
22-2704	Pressure	70 PSI	21 CFM @ 70 PSI
22-2765	Pressure	80 PSI	22 CFM @ 80 PSI
22-2777	Pressure	70 PSI	23 CFM @ 70 PSI
22-2797	Pressure	70 PSI	21 CFM @ 70 PSI
22-2030	Siphon	50 PSI	12 CFM @ 50 PSI
22-2880	Siphon	60 PSI	15 CFM @ 60 PSI
22-2900	Siphon	45 PSI	12 CFM @ 45 PSI