

AgStudio 2018 SP0

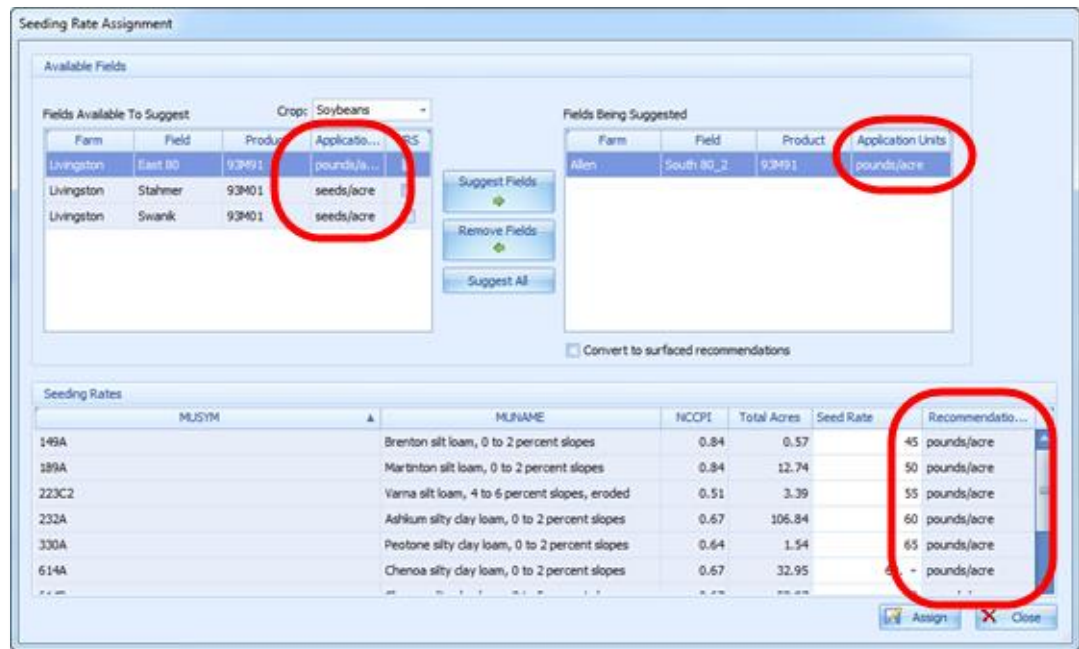
Release Notes February 28th, 2018

The AgStudio 2018 SP0 release provides you with needed improvements to start your year off on the right foot. This release is a mandatory update, and prior versions of AgStudio will no longer work after the release date.

We have put significant effort into updating our GIS components. This effort was to ensure that the geometry functions within the AgStudio suite of products performs consistently and efficiently. We have seen speed improvement in some geometry functions. In addition, this puts the system into a place where, if needed, we could replace the underlying GIS engine for additional performance and reliability improvements.

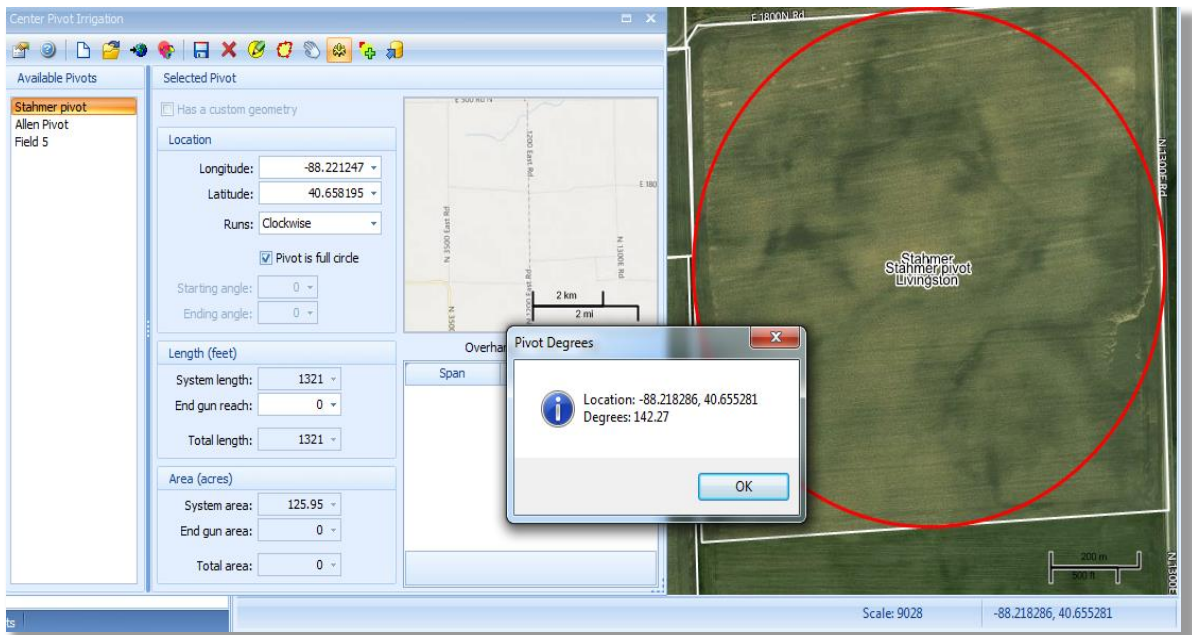
AgStudio Desktop

- 📌 The VRS Tools have been updated to allow for running VRS prescriptions in pounds/acre in addition to seeds/acre.
 - In the Setup | Seeding extension, add seeding varieties with application units of pounds/acre



- In the Seeding | Create Recommendation From extension options, create planting recommendations with seed rates that coincide with the pounds/acre application unit
- In the Seeding | VRS Extension, use the Edit Products product upon exporting to modify an existing recommendations application units from seeds/acre to pounds/acre
- 📌 Importing KML Boundary files works with the latest format changes from Google Earth.
- 📌 Support for Layer Categories and Subtypes has been implemented. This allows you to better define layers such as management zones.
- 📌 Corrected the polygon split tool to prevent slivers from being created.

- Added a Refresh option to the right-click context menu so you can refresh a particular domain instead of an entire grower.
- MYYA now supports multiple crop zones of the same commodity within the same crop year.
- In the Nutrient Formulator, the “Other Applications” tab has been fixed to honor applications added to the grid.
- Map Settings on the Field Report from within Sampling Work Order are again being honored.
- Overview Maps (View menu) works again with Crop Zone Name as the theme.
- A new “Find degrees” tool has been implemented in Center Pivot extension to facilitate specifying that data on your pivot.



- The AgLeader Versa component has been updated to read data from the latest firmware.
- The CNH card manager has been updated to import secondary product information.

Command Center – Location Summary Reports

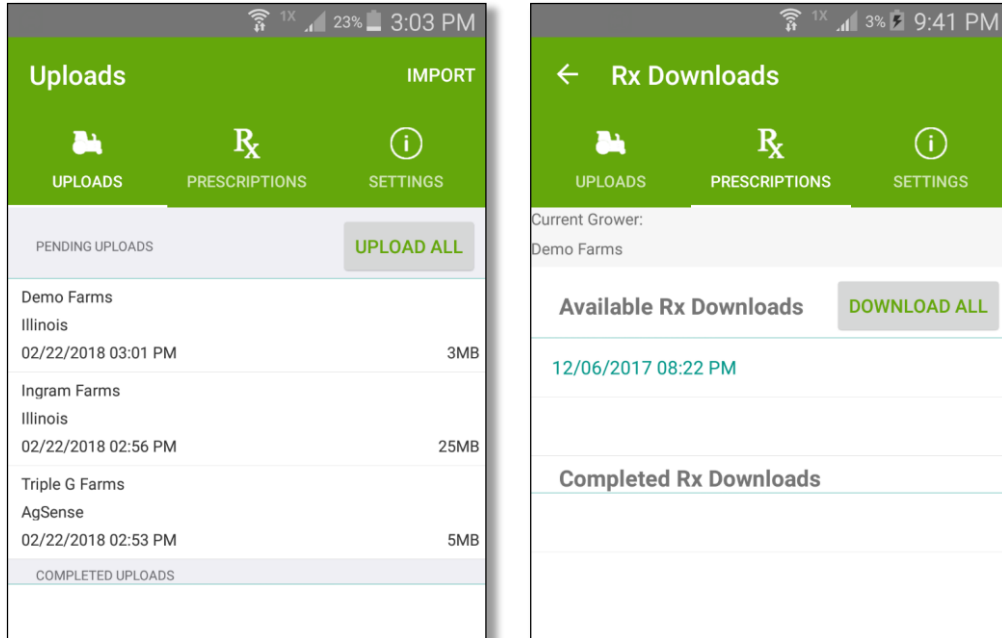
- All data now displays when selecting greater than 48 locations
- The Summary grid below the chart is now populated with data based on the information in the chart.

AgStudio SELECT

- Multi-Layer Overlay tool has been updated to include Field Operation data.

AgDirector Mobile

AgDirector Mobile app is now available on Android devices, allowing you to upload field operations or send out setup\rx files to more people in more places. Please contact your salesperson for details.



Upcoming features

As demonstrated during the Customer Conference, we have been working on some new tools that will debut in the coming months.

Aggregation Extension

The first is an Aggregation extension built to pull all of your data for a given crop year into a single surface layer for analysis, export or simple viewing. The collection of data in a single layer allows you to quickly see the values from soil test, seeding rates, and yield data in one spot.

Integration with Imagery

Integration with Planet Labs imagery will be available in time for your summer scouting season giving you access to weekly imagery throughout the season as well as the crop health index maps to identify higher stress areas of your crop.

AgFiniti API Connection

The AgFiniti API connection for wireless data transfer is currently under development.

AgStudio MAP

We are taking the feedback provided at the Customer Conference and working on changes to the AgStudio MAP soil sampling application.

Please talk with your salesperson about taking advantage of these new tools.