



001 Bonbon



002 Sundry



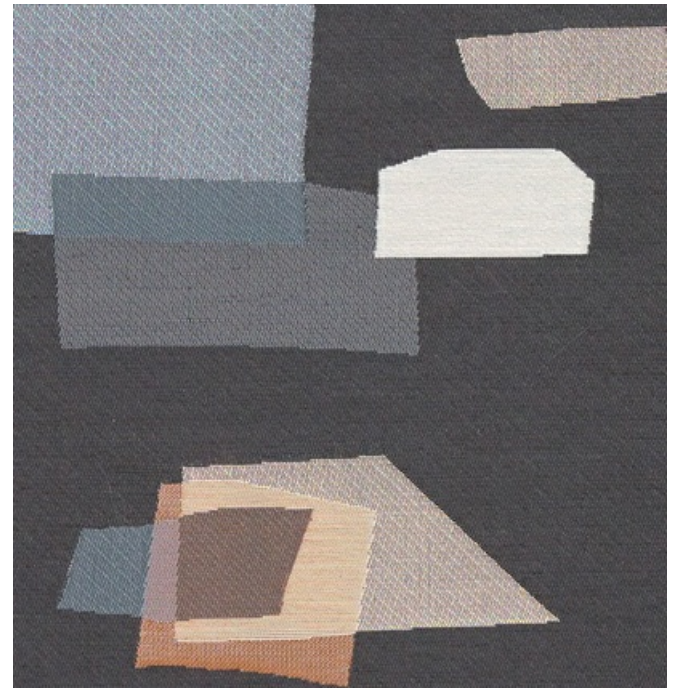
003 Luminary



004 Resonant



005 Topograph



006 Kalamata

466545 Washi by Hella Jongerius

maharam

Design

Hella Jongerius

Application

Seating
Note: This textile is available as a made-to-order pillow.

Characteristics

Content: 55% Cotton, 22% Solution-Dyed Nylon, 15% Linen, 8% Post-Consumer Recycled Polyester
Finish: PFAS-Free Water Repellent
Additional Finishes Available: Alta, Alta Food & Beverage, Nanotex, Nanotex with Impermeable Barrier, Stain Repellent Finish
Backing: Acrylic
Width: 54" (137cm)
Repeat: 25 3/4" V, 28 1/4" H (65cm V, 72cm H)
Bolt Size: 30 yards (27 m)
Weight: 22.3 oz/ly (700 gr/lm)
Country of Origin: USA


Price

\$130.00 / C\$179.25 (FOB destination)
C\$175.75 (FOB origin)



Testing

Abrasion: ASTM D4157, 65,000 Double Rubs

Flammability: BS 5852 Crib 5*
CAL 117-2013
EN 1021-1*
EN 1021-2*
GB/T 17591*
*passes with additional treatment

Lightfastness: AATCC 16.3, 40+ hours


Maintenance

S-Clean with mild, water-free dry cleaning solvent.
 

Environmental

Greenguard Gold Certified
LBC Red List Free
Contains Bio-Based Content
FR Free
Free of Intentionally Added PFAS

Warranty

3 years. See Terms and Conditions for more information.

© 2022 Maharam

Last updated June 1, 2024