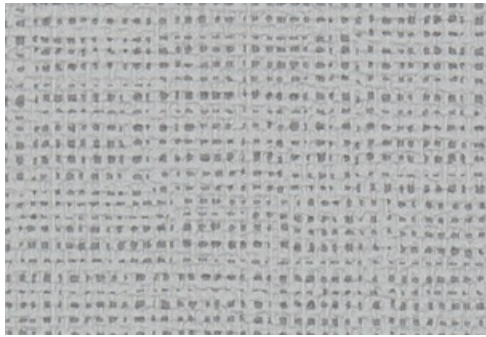
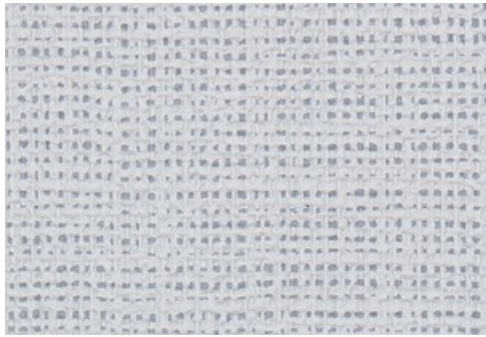


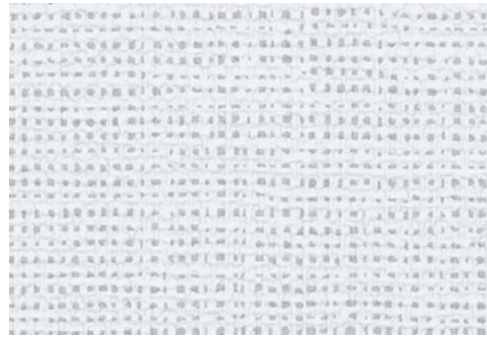
001 Dorsal



002 Goblet



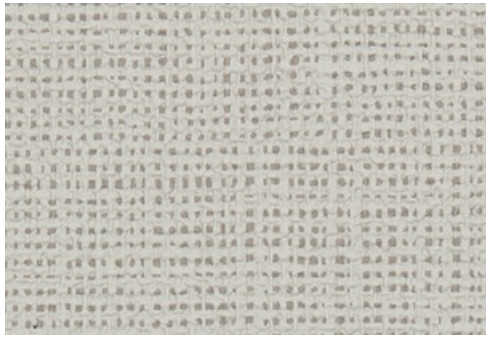
003 Griseous



004 Whitewash



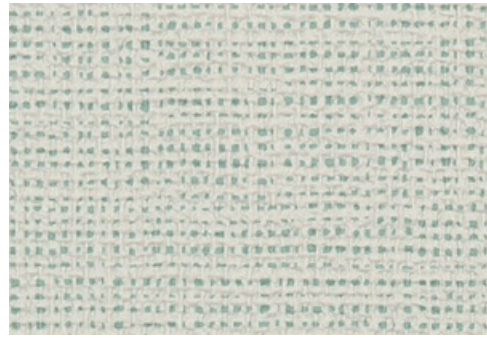
005 Cream



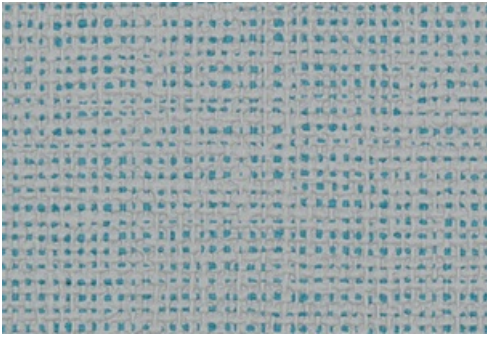
007 Frontier



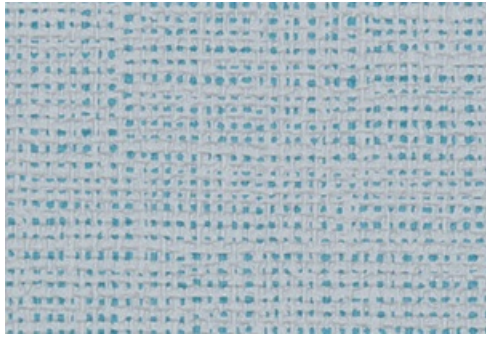
008 Weave



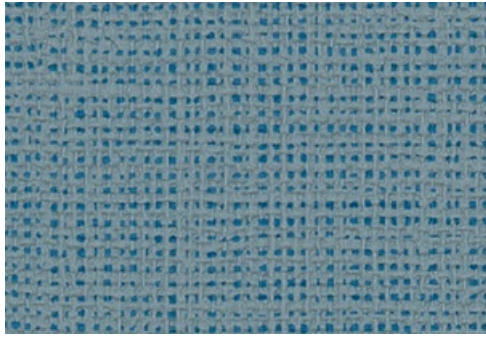
009 Propagate



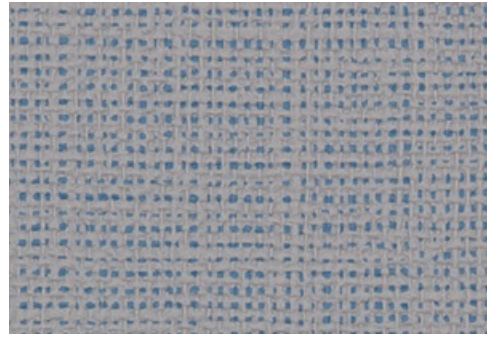
010 Purf



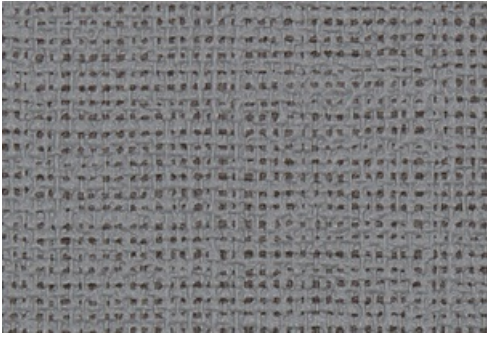
011 Saline



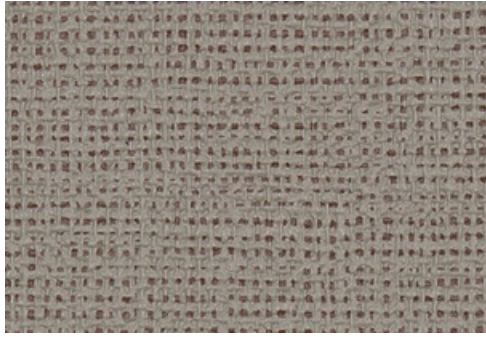
012 Lake



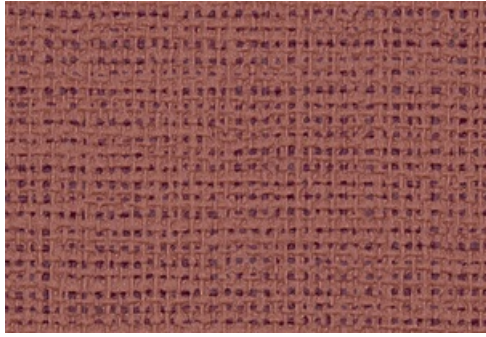
014 Circuit



015 Perch



016 Derby



017 Brick

Application

Walls

Characteristics

Content: 100% Non-Phthalate Vinyl

Finish: None (Impermeable)

Backing: Polyester/Cotton Osnaburg

Width: 54" (137cm)

Repeat: Non-match

Bolt Size: 30 yards (27 m)

Class: Type II

Weight: 20 oz/ly (600 gr/lm)

Traffic: High Traffic

Country of Origin: USA

Note on Mold: Intended for use in buildings designed and maintained to avoid moisture on or within walls.

Application must conform to current Installation Guidelines included in each shipment or available at maharam.com.

Price

\$23.00 / C\$34.75 (FOB destination)

C\$31.25 (FOB origin)

Testing

Flammability: ASTM E 84 Adhered

BS 476 Adhered*

EN 13501 Adhered*

GB 8624 Adhered*

*passes with additional treatment

Lightfastness: AATCC 16.3, 200+ hours



Maintenance

W/B-Clean with water-based cleanser or diluted household bleach.



Environmental

FR Free

Free of Intentionally Added PFAS

Non-Phthalate Vinyl

Warranty

10 years. See Terms and Conditions for more information.

© 2017 Maharam

Last updated April 1, 2024