



001 Glaze



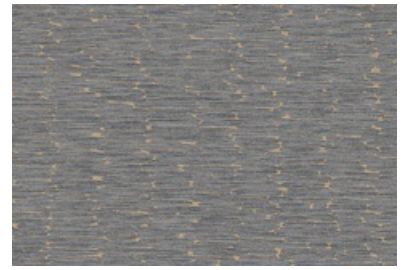
002 Moon



003 Linocut



004 Rock



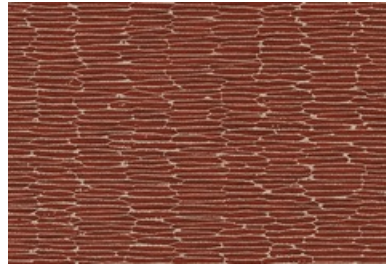
005 Whale



006 Tributary



007 Woodblock



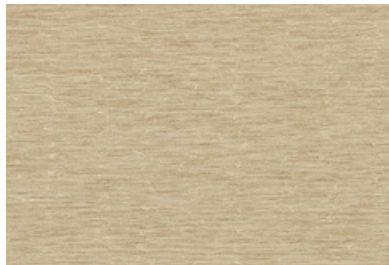
008 Molten



009 Acorn



010 Luxor



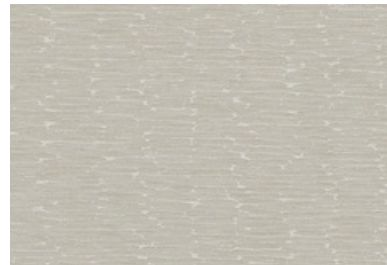
011 Amaranth



012 Pylon



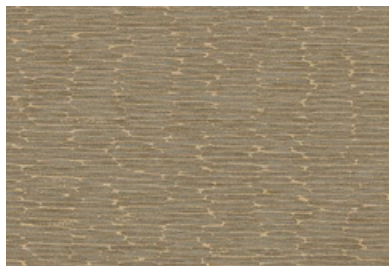
013 Oyster



014 Lace



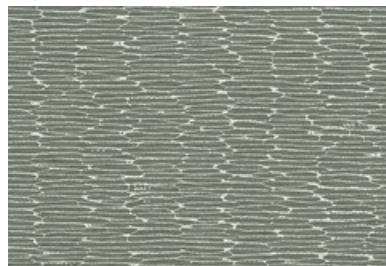
015 Antique



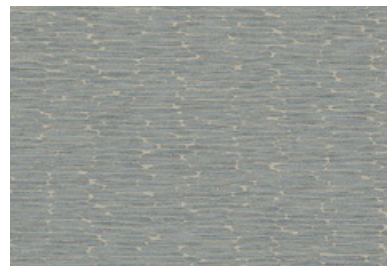
016 Reptile



017 Ribosome



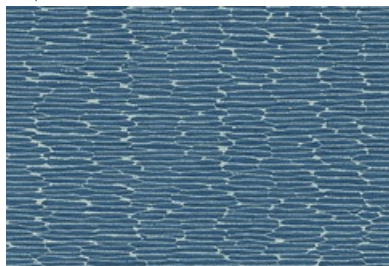
018 Palisade



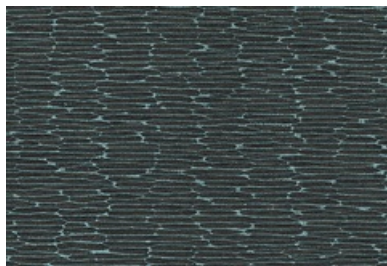
019 Aquifer



020 Freeze



021 Sail



022 Cormorant



023 Starlight



024 Cave

Application

Walls

Characteristics


Content: 100% Non-Phthalate Vinyl
Finish: None
Backing: Polyester/Cotton Osnaburg
Width: 54" (137cm)
Repeat: Non-match
Bolt Size: 30 yards (27 m)
Class: Type II
Weight: 20 oz/ly (600 gr/lm)
Traffic: High Traffic
Country of Origin: USA
Note on Mold: Intended for use in buildings designed and maintained to avoid moisture on or within walls.
Application must conform to current Installation Guidelines included in each shipment or available at maharam.com.

Price


\$38.50 / C\$55.75 (FOB destination)
C\$52.25 (FOB origin)

Testing

Flammability: ASTM E 84 Adhered
BS 476 Adhered*
CAN ULC S102 Adhered
EN 13501 Adhered*
GB 8624 Adhered*
*passes with additional treatment

Lightfastness: AATCC 16.3, 200+ hours


Maintenance

W/B-Clean with water-based cleanser or diluted household bleach.


Environmental

FR Free
Free of Intentionally Added PFAS
Non-Phthalate Vinyl

Warranty

10 years. See Terms and Conditions for more information.

© 2016 Maharam

Last updated April 1, 2024