

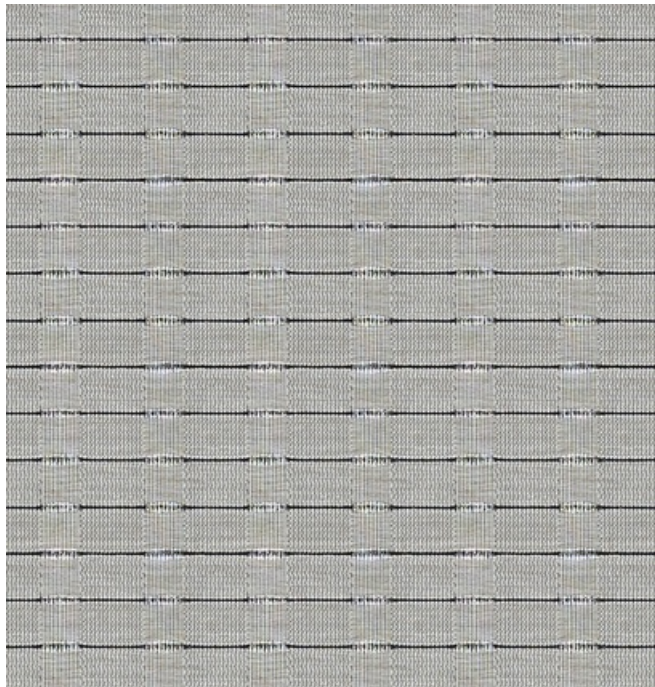
001 Lumen



002 Bangle



003 Kantha



004 Rail



005 Deco

399898 Nexus

**maharam**



Application

Walls


Characteristics

Content: 60% Linen, 26% Viscose, 14% Nylon  
Finish: PFAS-Free Water Repellent  
Backing: Cellulose / Polyester  
Width: 54" (137cm)  
Repeat: 1/4" V, 1/2" H  
(1cm V, 1cm H)  
Bolt Size: 55 yards (50 m)  
Weight: 12.5 oz/ly (400 gr/lm)  
Traffic: Low Traffic  
Country of Origin: Netherlands  
Note on Mold: Intended for use in buildings designed and maintained to avoid moisture on or within walls.  
Application must conform to current Installation Guidelines included in each shipment or available at maharam.com.


Price

\$142.00 /

Testing

Flammability: ASTM E 84 Adhered  
  
Lightfastness: AATCC 16.3, 40+ hours  


Maintenance

X-Vacuum or brush lightly to remove surface dust.  


Environmental

Greenguard Gold Certified  
REACH Compliant  
Contains Bio-Based Content  
Contains Forest Stewardship Council (Fsc) Certified Content  
FR Free

Warranty

1 year. See Terms and Conditions for more information.

© 2016 Maharam

Last updated April 1, 2024