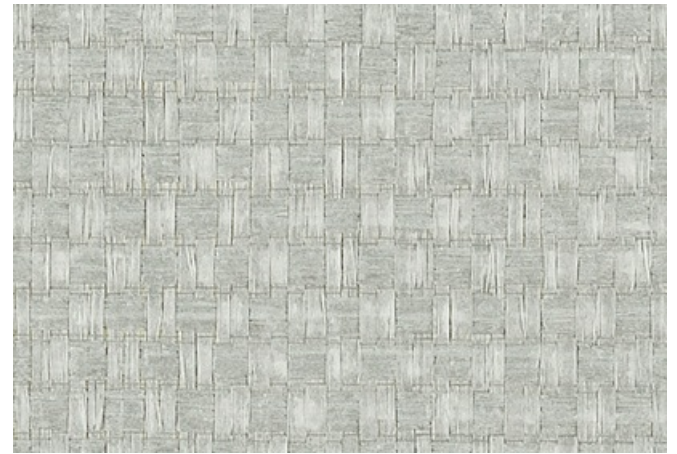




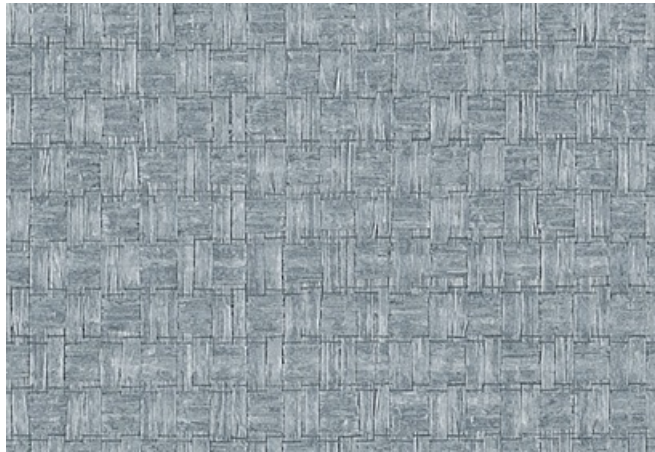
001 Ticket



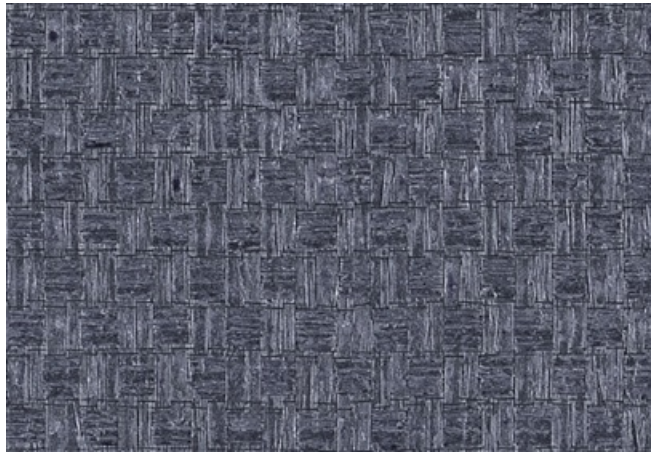
002 Diaphan



003 Foam



004 Breeze



005 Delta



006 Lima



007 Silt



008 Mystic



009 Quilt

399757 Crate

**maharam**

**Application**

Walls


**Characteristics**

Content: 90% Cellulose, 10% Rayon  
Finish: PFAS-Free Water Repellent  
Backing: 70% Post-Consumer Recycled Paper, 30% Paper  
Width: 36" (91cm)  
Repeat: Non-match  
Bolt Size: 55 yards (50 m)  
Weight: 6.5 oz/ly (200 gr/lm)  
Traffic: Low Traffic  
Country of Origin: Japan  
Note: Variations in color and texture are inherent to this textile.  
Note on Mold: Intended for use in buildings designed and maintained to avoid moisture on or within walls.  
Application must conform to current Installation Guidelines included in each shipment or available at maharam.com.


**Price**

\$45.50 / C\$68.08 (FOB destination)  
C\$61.50 (FOB origin)

**Testing**

Flammability: ASTM E 84 Adhered  
  
Lightfastness: AATCC 16.3, 40+ hours  


**Maintenance**

X-Vacuum or brush lightly to remove surface dust.  


**Environmental**

Greenguard Gold Certified  
Contains Bio-Based Content  
Contains Recycled Content  
FR Free

**Warranty**

1 year. See Terms and Conditions for more information.

© 2016 Maharam

Last updated April 1, 2024