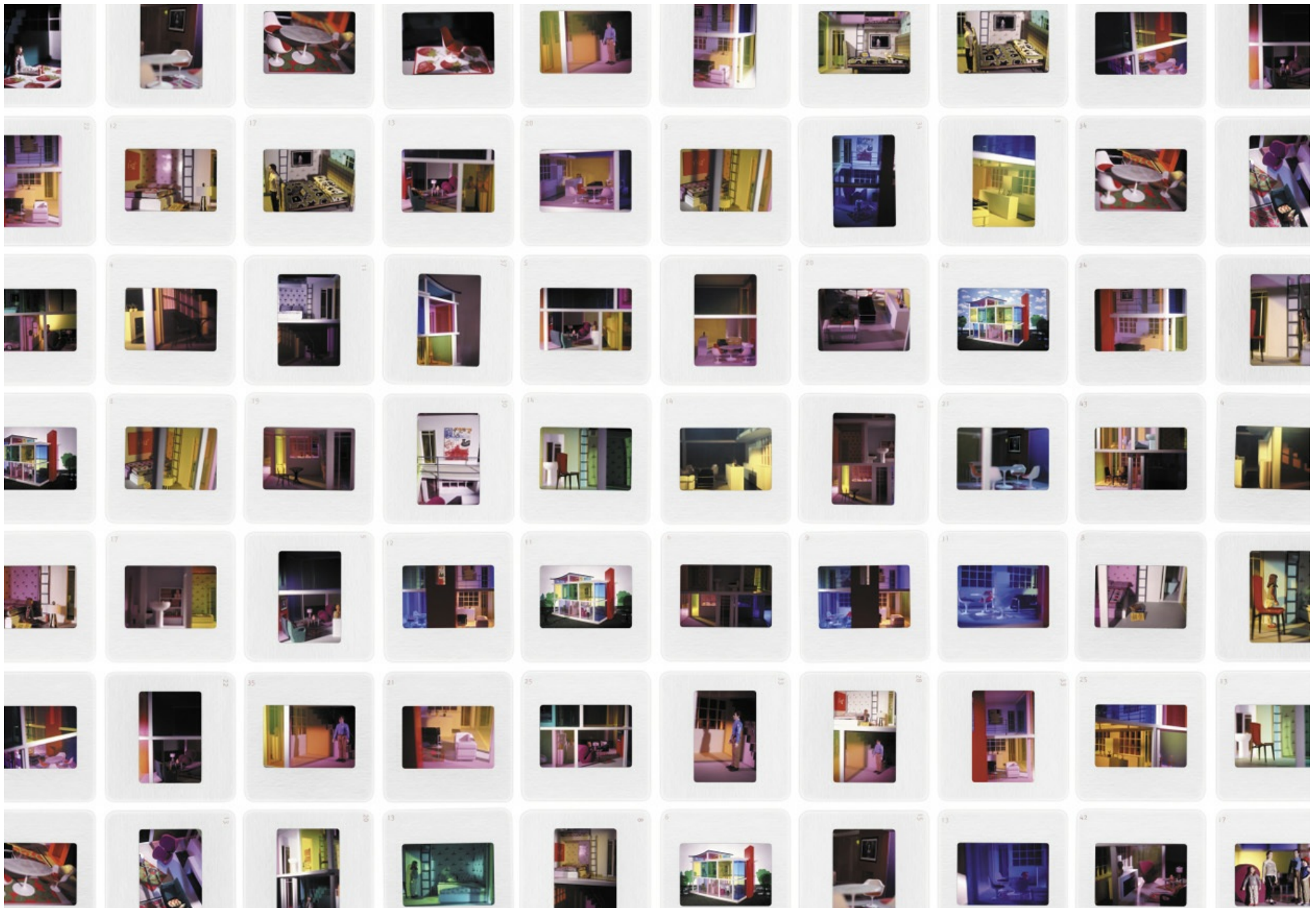


399455 Kaleidoscope House (Small)



001

399455 Kaleidoscope House (Small)

## Design

Laurie Simmons

## Application

Walls

## Characteristics

Content: 65% Cellulose, 35% Latex

Finish: PFAS-Free Protective Topcoat

Backing: None

Reference Dimension: 10' H x 13' 4" W (305cm x 406cm)

Traffic: Moderate Traffic

Customs: Repeatable, Scalable

Country of Origin: USA

Note on Mold: Intended for use in buildings designed and maintained to avoid moisture on or within walls.

Application must conform to current Installation Guidelines included in each shipment or available at maharam.com.

## Price

Installation is sized, priced and produced on a project-specific basis.

## Maintenance

W-Clean with water-based cleanser.



## Testing

Flammability: AS/NZS 3837 Adhered

ASTM E 84 Adhered

CAN ULC S102 Adhered

ISO 5660 Adhered

Lightfastness: AATCC 16.3, 40+ hours



## Environmental

Greenguard Gold Certified

LBC Red List Free

Contains Bio-Based Content

FR Free

Free of Intentionally Added PFAS

## Brief

Kaleidoscope House (Small) explores depictions of childhood fantasies and domesticity through hundreds of slides of interiors from a modernist dollhouse designed in 2000 by artist Laurie Simmons and architect Peter Wheelwright.

## Warranty

3 years. See Terms and Conditions for more information.

© 2010 Laurie Simmons, Maharam under license

Last updated April 1, 2024