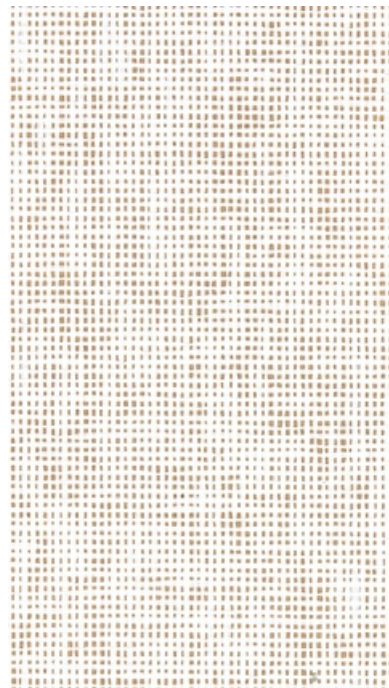
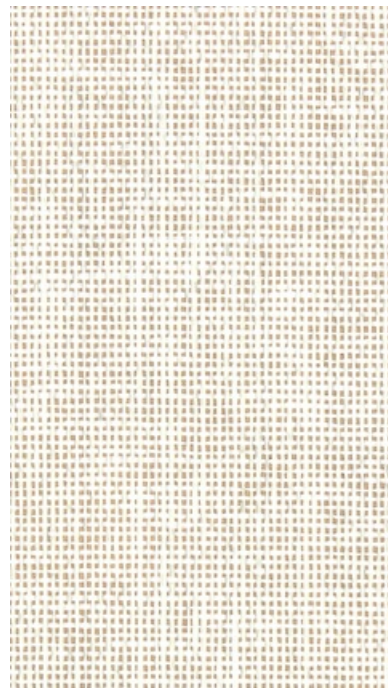




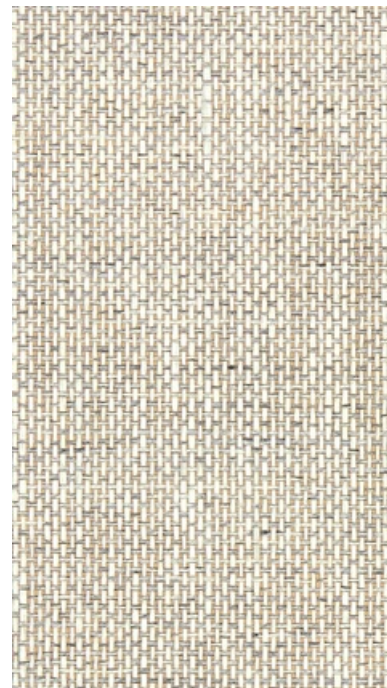
001 Bassinet



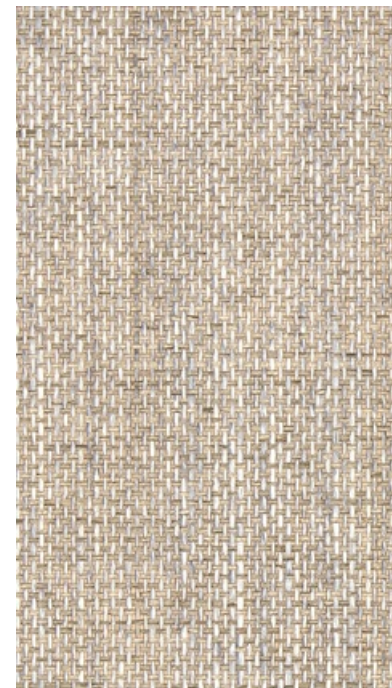
002 Cicely



003 Cordial



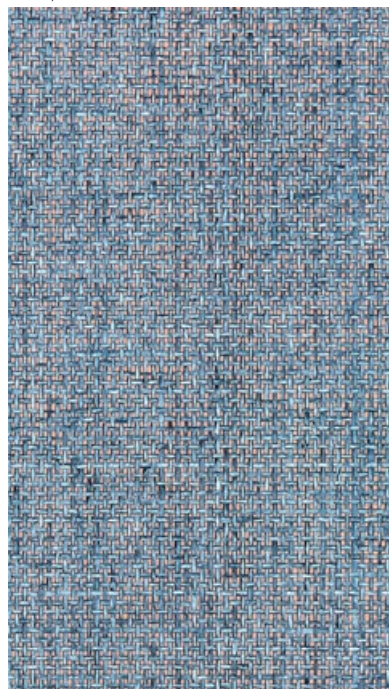
004 Travertine



005 Miche



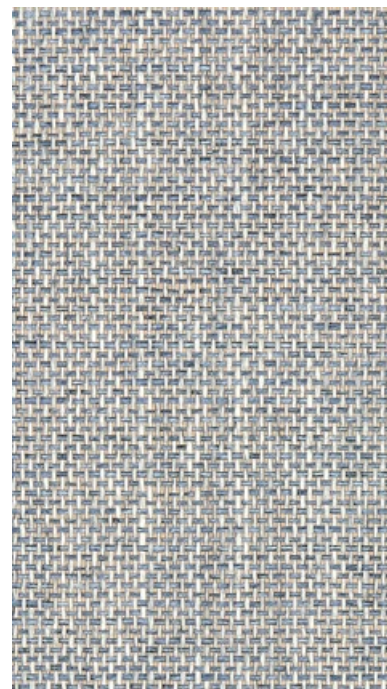
006 Garrison



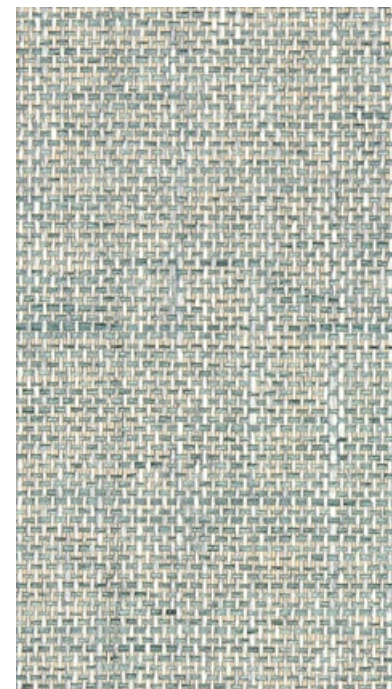
007 Bluewing



008 Patchwork



009 Hamlet



010 Kabocha

300072 Cedar

maharam

Application

Walls

Characteristics


Content: 100% Cellulose
Finish: None
Backing: 100% Post-Consumer Recycled Paper
Width: 36" (91cm)
Bolt Size: 24 yards (22 m)
Weight: 3.8 oz/ly (100 gr/lm)
Traffic: Low Traffic
Country of Origin: Japan
Note: Variations in color and texture are inherent to this textile.
Note on Mold: Intended for use in buildings designed and maintained to avoid moisture on or within walls.
Application must conform to current Installation Guidelines included in each shipment or available at maharam.com.

Price


\$56.50 / C\$83.83 (FOB destination)
C\$76.50 (FOB origin)

Testing

Flammability: ASTM E 84 Adhered

Lightfastness: AATCC 16.3, 40+ hours


Maintenance

W-Clean with water-based cleanser.


Environmental

Greenguard Gold Certified
LBC Red List Free
REACH Compliant
Contains Bio-Based Content
FR Free
Free of Intentionally Added PFAS

Warranty

1 year. See Terms and Conditions for more information.

© 2021 Maharam

Last updated April 1, 2024