



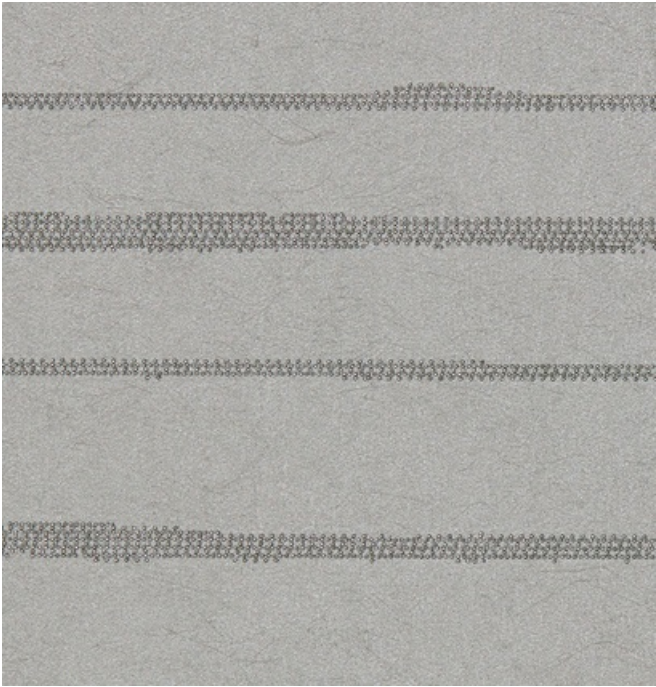
001 Elope



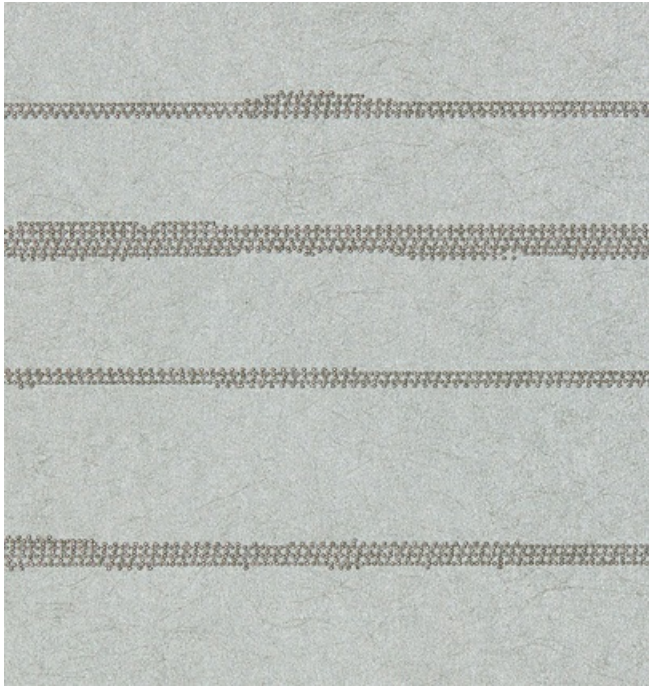
002 Elevation



003 Sunbathe



004 Jazz



005 Dolomite

300058 Ore

maharam

Application

Walls

Characteristics

Content: 70% Cellulose, 30% Polyester

Finish: PFAS-Free Water Repellent

Backing: Cellulose / Polyester

Width: 54" (137cm)

Repeat: 16 3/4" H

(43cm H)

Bolt Size: 55 yards (50 m)

Weight: 15.2 oz/ly (500 gr/lm)

Traffic: Moderate Traffic

Country of Origin: Netherlands

Note: Variations in color and texture are inherent to this textile.

Note on Mold: Intended for use in buildings designed and maintained to avoid moisture on or within walls.

Application must conform to current Installation Guidelines included in each shipment or available at maharam.com.

Price

\$75.00 /

Testing

Flammability: ASTM E 84 Adhered

EN 13501 Adhered

Lightfastness: AATCC 16.3, 40+ hours



Maintenance

X-Vacuum or brush lightly to remove surface dust.



Environmental

Greenguard Gold Certified

Healthier Hospitals Compliant

LBC Red List Free

REACH Compliant

Contains Bio-Based Content

Contains Forest Stewardship Council (Fsc) Certified Content

FR Free

Free of Intentionally Added PFAS

Warranty

1 year. See Terms and Conditions for more information.

© 2019 Maharam

Last updated April 1, 2024