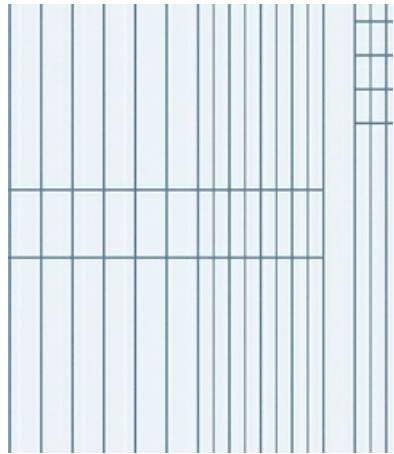
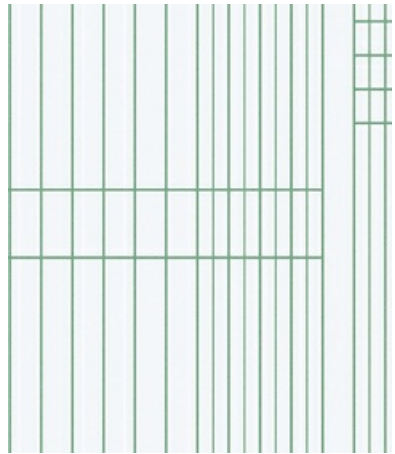


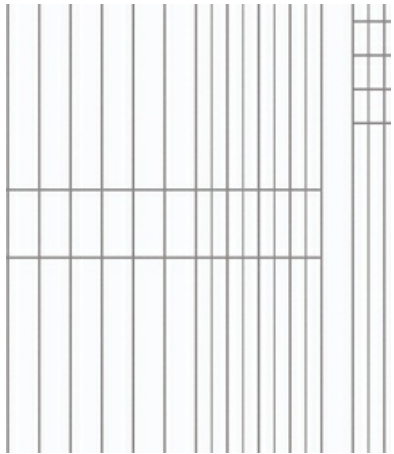
001 Ace



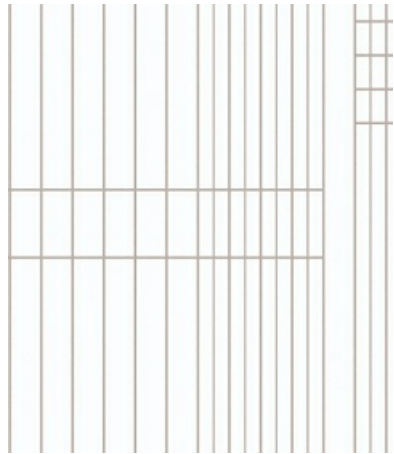
002 Court



003 Calman



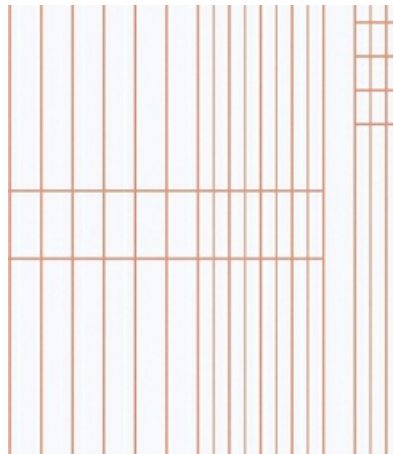
004 Apex



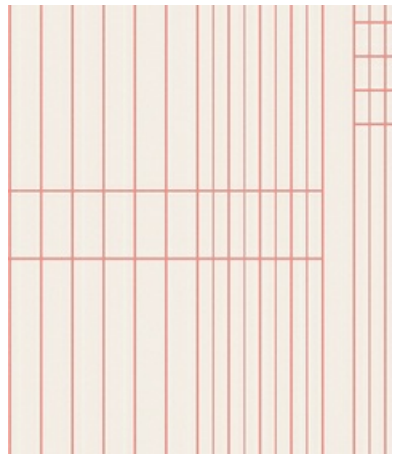
005 Crane



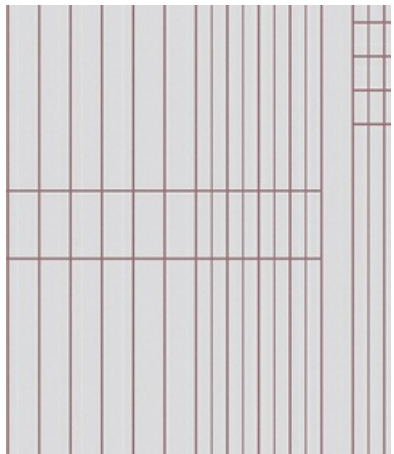
006 Miso



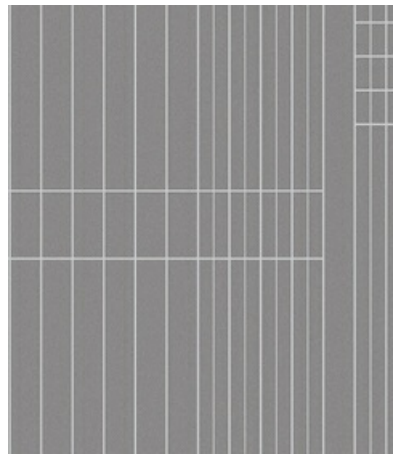
007 District



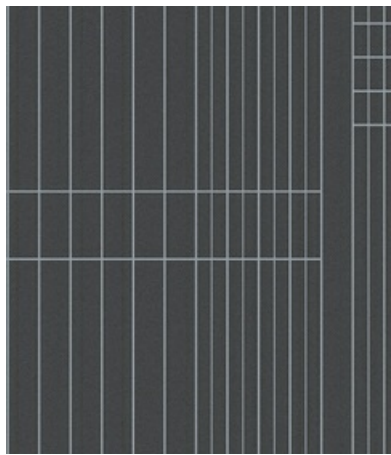
008 Match



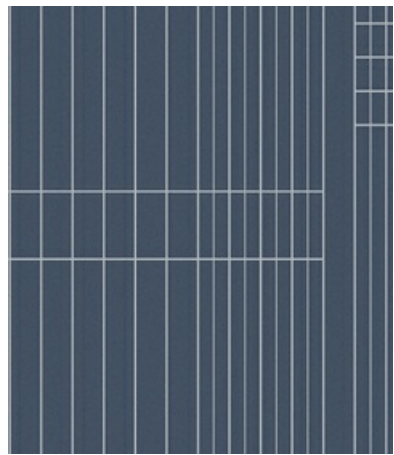
009 Cardamom



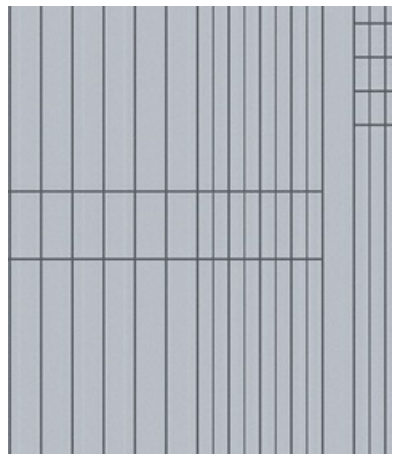
010 Chain



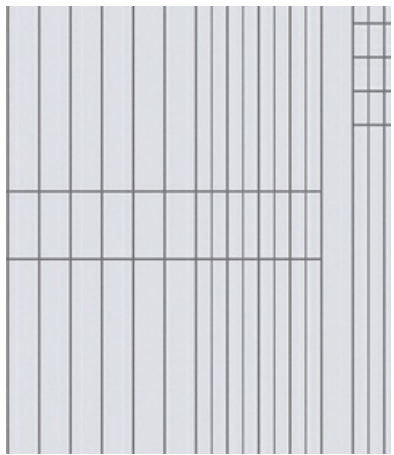
011 Drone



012 Eon



013 Fuse



014 Maze

Application

Walls

Characteristics

Content: 100% Non-Phthalate Vinyl

Finish: None

Backing: Polyester / Cellulose

Width: 52" (132cm)

Repeat: Non-match

Bolt Size: 30 yards (27 m)

Class: Type II

Weight: 20 oz/ly (600 gr/lm)

Traffic: High Traffic

Country of Origin: USA

Note on Mold: Intended for use in buildings designed and maintained to avoid moisture on or within walls.

Application must conform to current Installation Guidelines included in each shipment or available at maharam.com.

Price

\$30.00 / C\$44.25 (FOB destination)

C\$40.75 (FOB origin)

Testing

Flammability: AS/NZS 3837 Adhered

ASTM E 84 Adhered

CAN ULC S102 Adhered

EN 13501 Adhered*

GB 8624 Adhered*

ISO 5660 Adhered

*passes with additional treatment

Lightfastness: AATCC 16.3, 40+ hours



Maintenance

W-Clean with water-based cleanser.



Environmental

FR Free

Free of Intentionally Added PFAS

Non-Phthalate Vinyl

Warranty

10 years. See Terms and Conditions for more information.

© 2018 Maharam

Last updated April 1, 2024