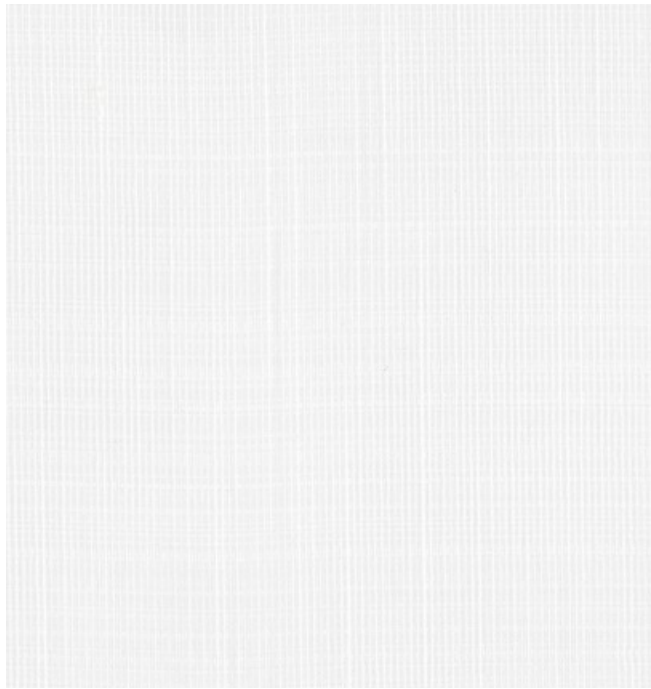


001 Void



002 Down



005 Nimble



006 Breeze



007 Clay



008 Ash

Application

Windows

Characteristics

Content: 100% Trevira CS Polyester  
Finish: None  
Backing: None  
Width: 128" (325cm)  
Bolt Size: 60 yards (55 m)  
Weight: 3.9 oz/ly (100 gr/lm)  
Country of Origin: Switzerland  
Note: Shown railroaded.

Price






\$76.00 / C\$106.25 (FOB destination)  
C\$102.75 (FOB origin)

Testing

Flammability: AS/NZS 1530.3  
BS 5867  
CAN ULC S109  
GB 8624  
NFPA 701

Lightfastness: AATCC 16.3, 60+ hours  
   

Maintenance

Dry clean only.  
    

Environmental

Greenguard Gold Certified  
Oeko-Tex Certified  
LBC Red List Free  
REACH Compliant  
Free of Intentionally Added PFAS

Warranty

1 year. See Terms and Conditions for more information.

© 2015 Maharam

Last updated April 1, 2024