

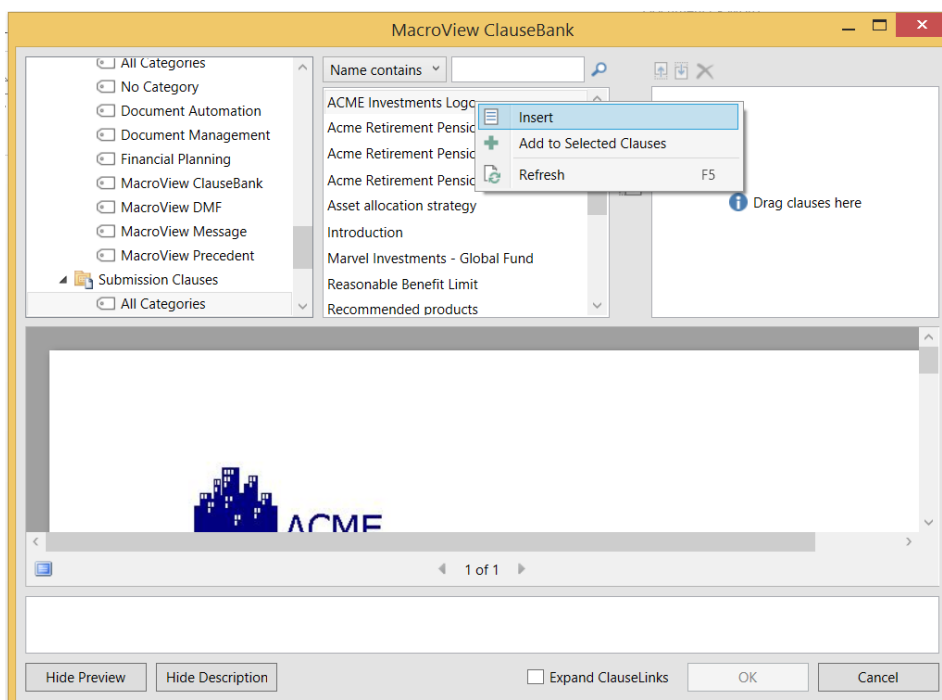
**System** MacroView ClauseBank

**Release** 8.1.10

**Date** July 2015

## New to ClauseBank

- Support for ClauseBank on SharePoint Online (O365).
- Improved performance and an updated interface



- The ClauseBank options are available from the ribbon Home tab, Options button in Word, PowerPoint and Outlook.
- Navigation of each ClauseBank by folders and sub folders or by categories.
- Increased levels of folder hierarchy now supported when using folders.
- Drag and drop support for adding, removing and re-ordering clauses.
- New clauses can now be added directly from within Microsoft Word by simply selecting the required content within a document and clicking the *New Clause* option.
- New clauses can now be added directly from within Microsoft PowerPoint by simply selecting the required content within a presentation and clicking the *New Clause* option.
- Note the New Clauses button is not currently supported in Microsoft Outlook and is always greyed out.
- Expiry dates<sup>1</sup> in slide libraries are now recalculated automatically based on the selected update frequency.
- Clause searches can now be performed across an entire site.
- With this release support is no longer available for SharePoint 2007 (MOSS), Windows SharePoint Services v3(WSS) or Foundation 2010 server platform.

<sup>1</sup> MacroView ClauseBank content expiry features are only available for on-premises SharePoint servers