

36' Homes

The Sandfield

2268 SQ.FT.

(Incl. 10 Sq.Ft. Finished Area In Basement)



A

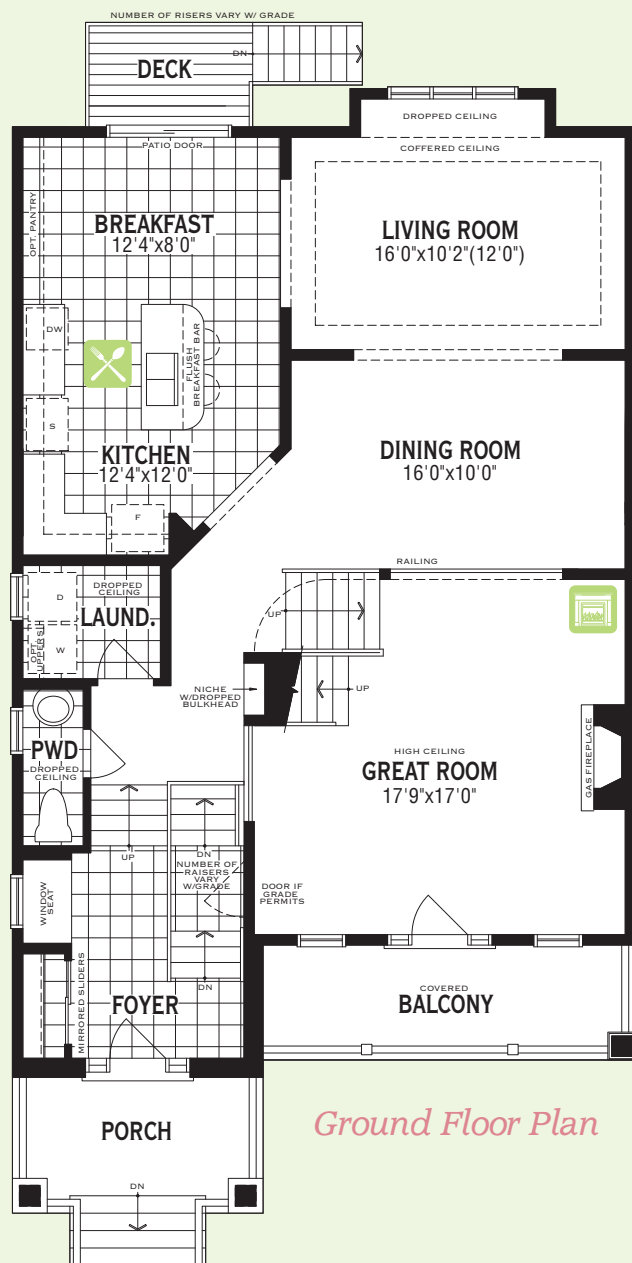


B

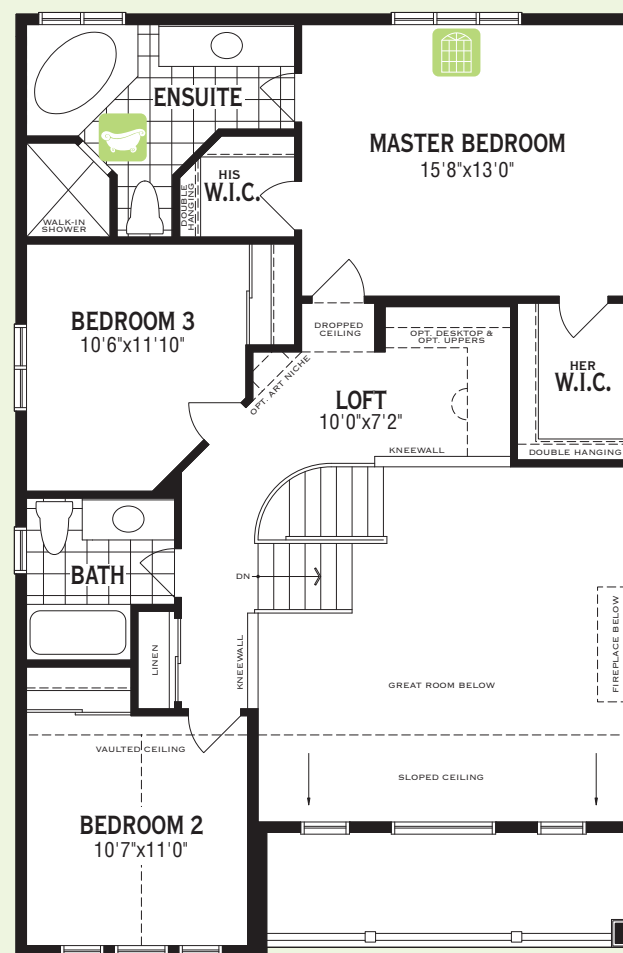


C

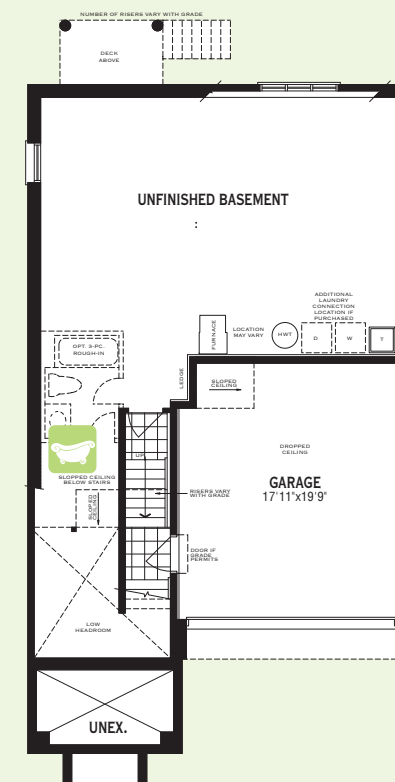
The Sandfield • 2268 Sq.Ft. • OT36061



Ground Floor Plan



Second Floor Plan



Basement Plan

All illustrations are artist's concept. Specifications, terms and conditions are subject to change without notice. These floor plans and room dimensions apply to elevation 'A' of this model type. Note that plans and room dimensions may vary according to elevation. Plan may be built as the mirror image. "Quiet wall" (where shown) means a wall in which additional insulation has been installed. This will assist in reducing, but not eliminating, ambient sound from adjoining rooms and mechanical systems. The extent of the reduction will vary depending upon various factors including, without limitation, the presence and extent of mechanical systems located in the wall. Please consult your sales representative. E.&O.E. March 2014 - Copyright 2014 - Mattamy Homes Limited.

Ground Floor Options

Finished Bathroom & Closet



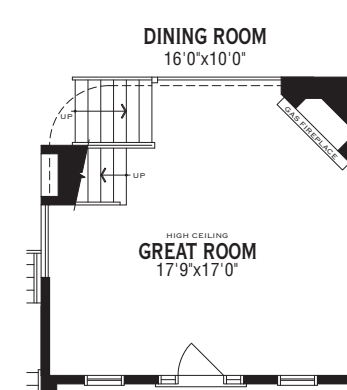
Chef's Kitchen



Alternate Kitchen



Alternate Fireplace Location

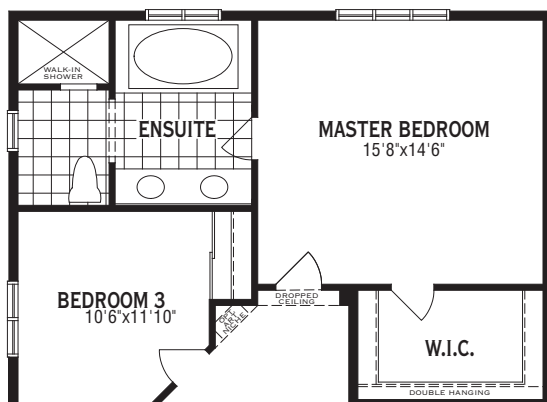


“ARCHITECT’S CHOICE” OPTIONS

Second Floor Options



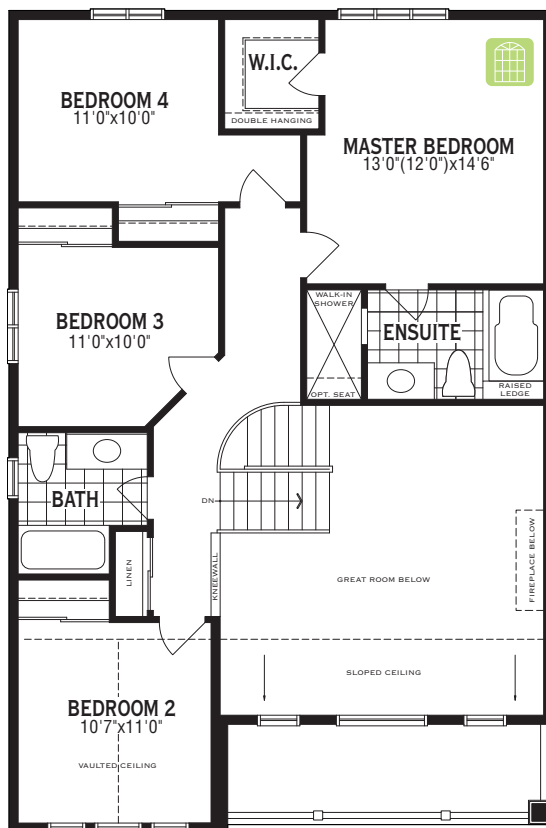
Bath Oasis



Master Lookout



Opt. Second Floor
4 Bedroom Plan



Opt. Second Floor Options



Opt. Second Floor
Window Seat



Additional Architect's Choice Options Available For This Home:

Ground Floor Choices

9' Ceiling Package

Includes:

- Approx. 12" higher ceilings
- Taller upper kitchen cabinets
- Taller Ground Floor windows (where applicable)
- Transom over front doors, garden doors and patio doors (where applicable)
- Stair configuration and/or minor design changes may be required to accommodate

Second Floor Choices

9' Ceiling Package

Includes:

- Approx. 12" higher ceilings
- Taller Second Floor Windows
- Stair configuration and/or minor design changes may be required to accommodate

Basement Choices

Rec. Room Ready Package

Includes:

- Rough-in drains in predetermined location for future 3-pc bathroom
- Deeper basement windows (where applicable)