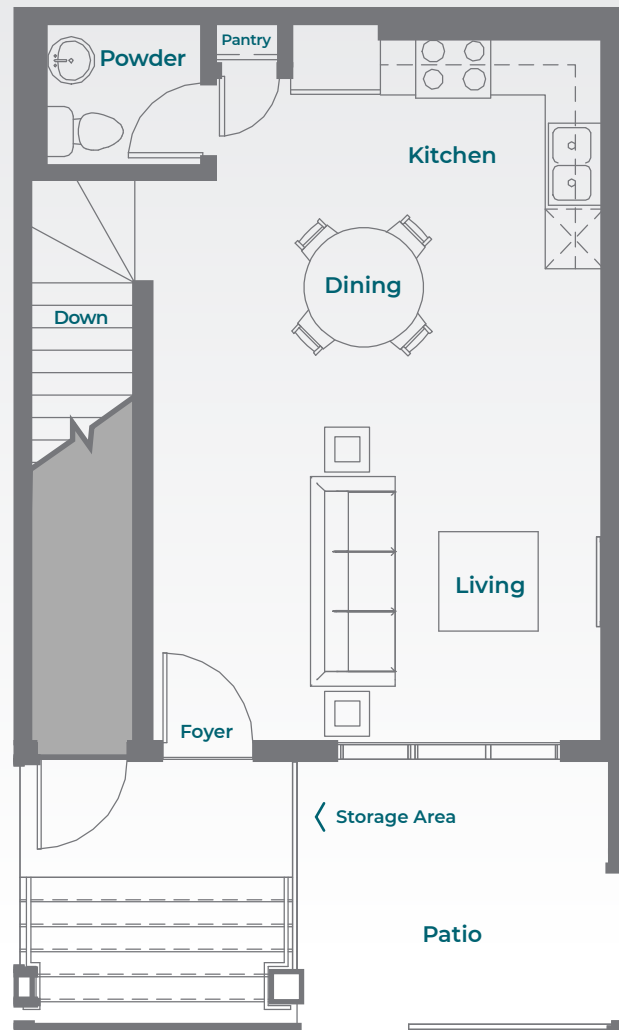
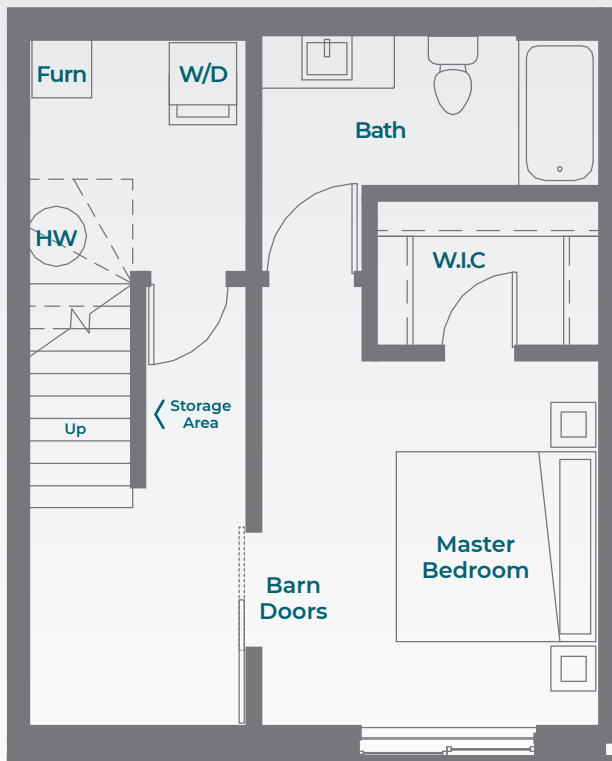


Sequoia

Lower Inner Town

1 Bed / 1.5 Bath / 920 SQ FT



Townhome living

- the privacy of a home, the perks of a community.

Tell us what's important to you... we can make it happen!

Sequoia

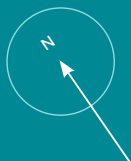
Lower Inner Town

1 Bed / 1.5 Bath / 920 SQ FT

FEATURING

- Private Covered Front Entrance with Modern Exterior Finishes
- 9'1" Main Living Area Ceilings
- Luxury Vinyl Plank Flooring to Main Living Areas
- Quartz Countertops with Upgraded Plumbing Fixtures
- Main Floor Powder Bathroom
- Bedroom with Barn Doors and Walk-in Closet
- Private Patio Seating Area
- Exterior Storage Area
- Full Size Stainless Steel Fridge, Ceran Top Stove, Dishwasher and Over-the-Range Microwave
- In-suite Laundry
- Upper Vanity Storage to Main Bathroom
- Large Windows Complete with Coverings
- Central Heat and Air Conditioning
- Pet Friendly

NOTE: Floorplans subject to change and may be mirror images. Room sizes, square footage, specifications, features, positioning, architectural elevations and outdoor spaces may vary per location.



30 El Tassi Drive

