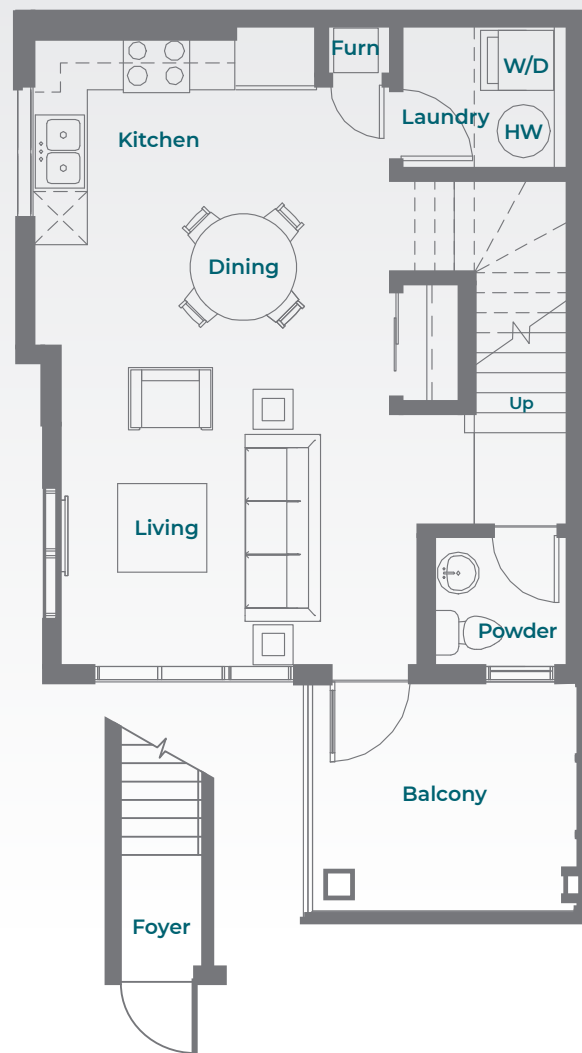
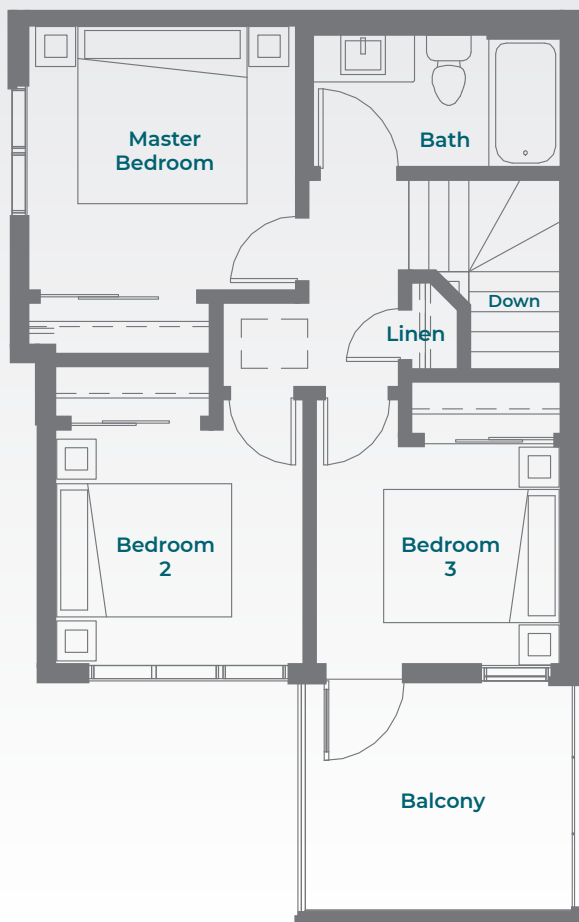


Glow

Upper Corner Town

3 Bed / 1.5 Bath / 1109 SQ FT



Townhome living

- the privacy of a home, the perks of a community.

Tell us what's important to you... we can make it happen!

Glow

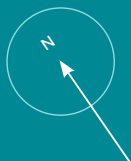
Upper Corner Town

3 Bed / 1.5 Bath / 1109 SQ FT

FEATURING

- Corner Town with Abundant Natural Light
- Covered Front Entrance with Modern Exterior Finishes
- 9'1" Main Living Area Ceilings
- Luxury Vinyl Plank Flooring to Main Living Areas
- Quartz Countertops with Upgraded Plumbing Fixtures
- Main Floor Powder Bathroom
- Balcony 1 view from Living Room
- Balcony 2 view from Bedroom
- Full Size Stainless Steel Fridge, Ceran Top Stove, Dishwasher and Over-the-Range Microwave
- In-suite Laundry
- Pantry Storage in Kitchen
- Linen Storage Upper Level
- Upper Vanity Storage to Main Bathroom
- Large Windows Complete with Coverings
- Central Heat and Air Conditioning
- Pet Friendly

NOTE: Floorplans subject to change and may be mirror images. Room sizes, square footage, specifications, features, positioning, architectural elevations and outdoor spaces may vary per location.



30 El Tassi Drive

