



Smoke Alarm

Manual

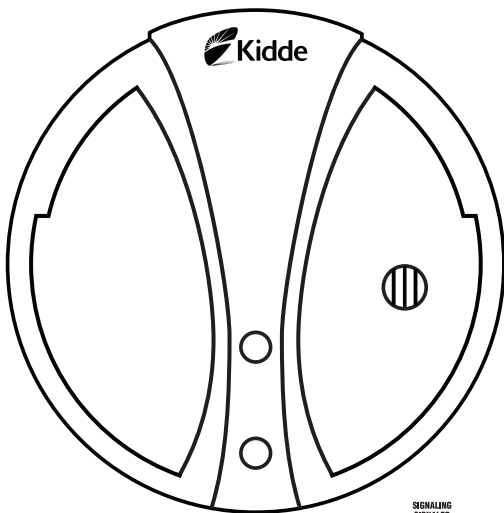
For alarm models:

0915CA

0916CA

PE9CA

0918CA



Manual P/N 820-1240 Rev. A 0918-7227-03



Contents

Introduction	1
Installation	2-8
Operation	9-10
Maintenance	11-14
Fire Safety	15-18
Warranty	19-20



130 Esna Park Drive, Markham ON L3R 1E3
Consumer Hotline: 1-800-880-6788
www.kidde.ca

Made in China. Patents Pending

Introduction

Models

0915CA, 0916CA, PE9CA and 0918CA

Thank you for purchasing this smoke alarm. It is an important part of your family's home safety plan. You can trust this product to provide the highest quality safety protection. We know you expect nothing less when the lives of your family are at stake.

Please take a few minutes to thoroughly read this alarm manual, and save it for future reference. Teach children how to respond to the alarms, and that they should never play with the unit.

If you have any questions about the operation or installation of your alarm, please call our toll free Consumer Hotline at 1-800-880-6788.

Image 1C will help you determine the correct location of safety products that will help make your home a safer place.

Installation

Models **0915CA**, **0916CA**, and **0918CA** are designed to detect products of combustion using the ionization technique. They contain 0.9 microcurie of Americium 241, a radioactive material. Distributed under U.S. NRC License No. 32-23858-01E. Manufactured in compliance with U.S. NRC safety criteria in 10 CFR 32.27. The purchaser is exempt from any regulatory requirements. Do not try to repair the smoke alarm yourself. Refer to the instructions in **Warranty** section for service.

WARNING: Battery door will not close unless battery is present. Removal of battery will render the smoke alarm inoperative.

NOTE: Any statements referring to a battery, applies to both batteries used with model 0918CA.

IMPORTANT: Read all instructions before installation and keep this manual near the alarm for future reference.

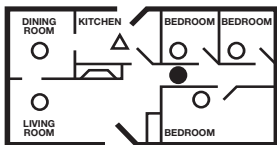
Do not try to repair the smoke alarm yourself. Refer to the instructions in **Warranty section for service.**

Installation

Recommended Locations

- Locate the first alarm in the immediate area of the bedrooms. Try to monitor the exit path, as the bedrooms are usually farthest from the exit. If more than one sleeping area exists, locate additional alarms in each sleeping area (Image 1A).
- Locate additional alarms to monitor any stairway as stairways act like chimneys for smoke and heat.
- Locate at least one alarm on every floor level (Image 1B).
- Locate an alarm in every bedroom.
- Locate an alarm in every room where electrical appliances are operated (i.e. portable heaters or humidifiers).
- Locate an alarm in every room where someone sleeps with the door closed. The closed door may prevent an alarm not located in that room from waking the sleeper.
- Smoke, heat, and combustion products rise to the ceiling and spread horizontally. Mounting the smoke alarm on the ceiling in the center of the room places it closest to all points in the room. Ceiling mounting is preferred in ordinary residential construction.
- When mounting an alarm on the ceiling, locate it at a minimum of 10 cm (4") from the side wall (Image 2A).
- When mounting the alarm on the wall, use an inside wall with the top edge of the alarm at a minimum of 10 cm (4") and a maximum of 30.5 cm (12") below the ceiling (Image 2A).
- Put smoke alarms at both ends of a bedroom hallway or large room if the hallway or room is more than 9.1 m (30') long.
- For mobile home installation, select locations carefully to avoid thermal barriers that may form at the ceiling. For more details, see **Mobile Homes**.

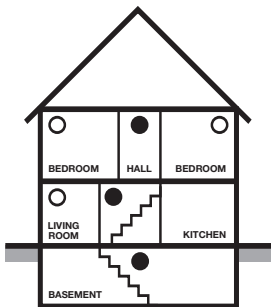
Installation



- Smoke Alarms for Minimum Protection
- Smoke Alarms for Additional Protection
- △ Ionization Type Smoke Alarm with Hush® Control or Photoelectric Type

SINGLE FLOOR PLAN

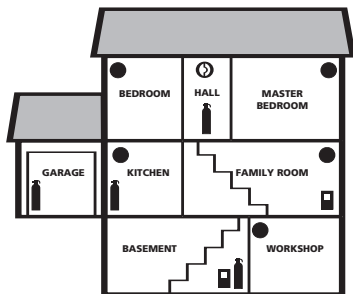
IMAGE 1A



MULTIPLE FLOOR PLAN

IMAGE 1B

- Install smoke alarms on sloped, peaked or cathedral ceilings at or within 0.9 m (3') of the highest point (measured horizontally). NFPA Standard 72 states: "Smoke alarms in rooms with ceiling slopes greater than 0.3 m in 2.4 m (1 foot in 8 feet) horizontally shall be located on the high side of the room." NFPA Standard 72 states: "A row of detectors shall be spaced and located within 0.9 m (3') of the peak of the ceiling measured horizontally" (Image 2B).






-  FIRE EXTINGUISHERS
- SMOKE ALARMS
-  CARBON MONOXIDE ALARMS
-  TALKING SMOKE/CO ALARM

IMAGE 1C

TOTAL HOME PROTECTION

Installation

Locations to Avoid

- Do not install within 0.9 m (3') of the following: The door to a kitchen, or a bathroom that contains a tub or shower, forced air supply ducts used for heating or cooling, ceiling or whole house ventilating fans, or other high air-flow areas.
- Do not place the alarm where drapes or other objects will block the sensor. Smoke must be able to reach the sensor to accurately detect conditions.
- Do not install in peaks of vaulted ceilings, "A" frame ceilings or gabled roofs. (Less than 10 cm (4") from the peak of an "A" frame type ceiling.)
- Install at least 30.5 cm (12") away from fluorescent lights as electronic noise may cause nuisance alarms.
- Keep out of insect infested areas. Avoid excessively dusty, dirty or greasy areas. Dust particles may cause nuisance alarms or failure to alarm.
- Extreme temperatures may effect the sensitivity of the alarm. Do not install in areas where the temperature is colder than 4.4°C (40°F) or hotter than 37.8°C (100°F), such as garages and unfinished attics.
- Do not install in areas where the relative humidity (RH) is greater than 85%. Very humid areas, with moisture or steam, can cause nuisance alarms.
- Avoid placing ionization smoke alarms in kitchen areas. Normal cooking may cause nuisance alarms. If a kitchen alarm is desired, it should have an alarm silence feature or be a photoelectric type.
- Do not place in the garage. Particles of combustion are present when you start your automobile.
- Smoke alarms are not to be used with detector guards unless the combination (alarm and guard) has been evaluated and found suitable for that purpose.

Installation

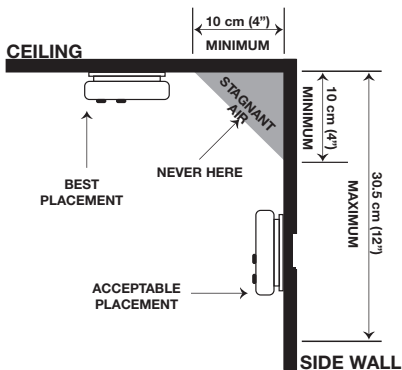


IMAGE 2A

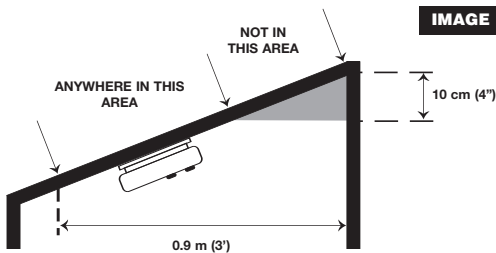
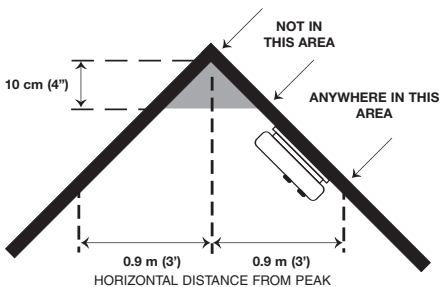


IMAGE 2B

Installation

Mounting

CAUTION: This unit is sealed. The cover is not removable!

NOTE: Any statements referring to a battery, applies to both batteries used with model 0918CA.

NOTE: Any statements referring to a battery reminder tab, applies to both battery reminder tabs used with model 0918CA.

- Remove the mounting plate from the back of the alarm by holding the plate and twisting the alarm in the direction indicated by the “OFF” arrow on the alarm cover.
- To ensure aesthetic alignment of the alarm with the hall-way, or wall, the “A” line on the mounting plate should be *parallel* with the hallway when ceiling-mounted, or *horizontal* when wall mounted (Image 3A).
- Secure the mounting plate to the wall or ceiling with the anchors and screws provided (Image 3B).
- For aesthetic reasons, the suggested position for wall mounting is with the button(s) facing down (Image 3C).
- Press the battery reminder tab down into the battery compartment while inserting the battery (Image 3E).

CAUTION: If the battery reminder tab is not held down in the battery compartment by the battery, the battery door will not close and the unit will not attach to the mounting plate.

- Alignment marks are provided on the edge of the mounting plate and the alarm. After installing the mounting plate, place the alarm onto the mounting plate, making sure the alignment marks are lined up. Twist the alarm in the direction indicated by the “ON” arrow on the alarm cover (Image 3D) until it locks in place.

Installation

Alarm Tamper Resist Feature

- To make the smoke alarm tamper-resistant, a locking pin has been provided in the bag with the screws and anchors. Using this pin will help deter children and others from removing the alarm from the mounting plate. To use the pin, insert it into the hole in the side of the alarm after the alarm has been installed on the mounting plate (Image 3F).

NOTE: The tamper-resistant pin will have to be removed in order to change the battery. Use long nose pliers to pull the pin out of the hole. It is now possible to remove the alarm from the mounting plate.

Mobile Homes

Modern mobile homes have been designed and built to be energy efficient. Install smoke alarms as recommended in **Recommended Locations** and Image 2A.

In mobile homes that are not well insulated compared to present standards, extreme heat or cold can be transferred from the outside to the inside through poorly insulated walls and roof. This may create a thermal barrier that can prevent the smoke from reaching an alarm mounted on the ceiling. In such units, install the smoke alarm on an inside wall with the top edge of the alarm at a minimum of 10 cm (4") and a maximum of 30.5 cm (12") below the ceiling (Image 2A).

If you are not sure about the insulation in your mobile home, or if you notice that the outer walls and ceiling are either hot or cold, install the alarm on an inside wall. For minimum protection, install at least one alarm close to the bedrooms. For additional protection, see Image 1A.

WARNING: Test your smoke alarm operation after R.V. or mobile home vehicle has been in storage, before each trip and at least once a week during use.

Installation

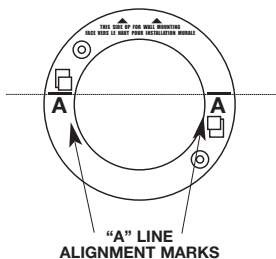


IMAGE 3A

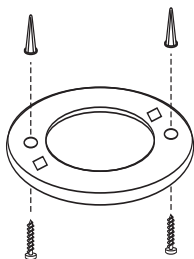


IMAGE 3B

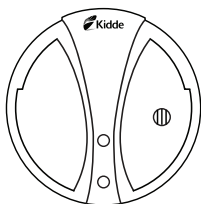


IMAGE 3C

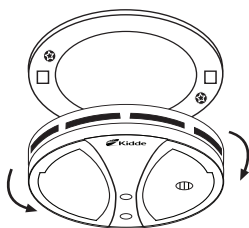


IMAGE 3D

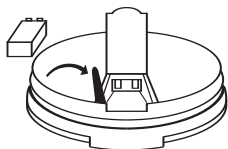


IMAGE 3E

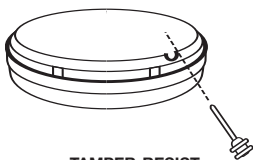


IMAGE 3F

Operation

CAUTION: Due to the loudness (85 decibels) of the alarm, always stand an arms-length away from the unit when testing.

- After installation, test your alarm by depressing and holding down the test button for a minimum of 5 seconds. This will sound the alarm if the electronic circuitry, horn, and battery is working. If the alarm does not sound, the unit has a defective battery or another failure.

The smoke alarm is operating once a fresh battery is installed and testing is complete. When the smoke alarm ionization sensor chamber senses products of combustion, the horn will sound a loud (85db) alarm until the sensing chamber is cleared of smoke particles.

False Alarms

Smoke alarms are designed to minimize false alarms. Cigarette smoke will not normally set off the alarm, unless the smoke is blown directly into the alarm.

Combustion particles from cooking may set off the alarm if the alarm is located close to the cooking area. Large quantities of combustible particles are generated from spills or when broiling. Using the fan on a range hood that vents to the outside (non-recirculating type) will also help remove these combustible particles from the kitchen.

Operation

HUSH® Control Feature

Models **0916CA**, and **0918CA**:

The Hush® button is extremely useful in a kitchen area or other areas prone to false alarms.

The Hush® feature has the capability of temporarily desensitizing the smoke alarm circuit for about 7 minutes. This feature is to be used only when a known alarm condition, such as smoke from cooking, activates the alarm.

If the alarm does sound, check for fires first. If a fire is discovered, get out and call the fire department. If no fire is present, check to see if one of the reasons listed in **Locations to Avoid** may have caused the alarm.

The smoke alarm is desensitized by pushing the Hush® button on the smoke alarm cover. If the smoke is not too dense, the alarm will silence immediately and “chirp” every 30-40 seconds for approximately 7 minutes. This indicates that the alarm is in a temporarily desensitized condition. The smoke alarm will automatically reset after approximately 7 minutes. If after this period particles of combustion are still present, the alarm will sound again.

The Hush® feature can be used repeatedly until the air has been cleared of the condition causing the alarm.

NOTE: Dense smoke will override the Hush® control feature and sound a continuous alarm.

CAUTION: Before using the alarm Hush® feature, identify the source of the smoke and be certain a safe condition exists.

Maintenance

Testing

CAUTION: Due to the loudness (85 decibels) of the alarm, always stand an arms length away from the unit when testing.

Test by pushing the Test button on the cover and hold it down for a minimum of 5 seconds. This will sound the alarm if all the electronic circuitry, horn and battery are working. If the alarm does not sound, the unit has a defective battery or some other failure. **DO NOT** use an open flame to test your alarm, you could damage the alarm or ignite combustible materials and start a fire.

Test the alarm weekly to ensure proper operation. Erratic or low sound coming from your alarm may indicate a defective alarm, and it should be returned for service (see **Warranty** section).

This smoke alarm is equipped with a flashing red indicator light. The red LED is located under the test button and will flash every 45 seconds to indicate that the smoke alarm is receiving power.

When products of combustion are sensed, the unit sounds a loud 85db pulsating alarm, and the red LED rapidly flashes every 2 seconds, until the air is cleared.

Safety light equipped model **918CA** will illuminate while the alarm sounds, until the sensing chamber is cleared of smoke particles.

For photoelectric model **PE9CA**. This alarm will “chirp” if any components in the smoke sensing chamber fail. This chirp will occur between the flashes of the red LED indicator. (If the chirp occurs at the same time as the red LED flash see **Battery Replacement** section for low battery information.)

Alarms failing an alarm test, or not operating normally, must be replaced with a new alarm. Similarly, alarms more than 10 years old must be replaced.

Maintenance

Alarm Removal

If the smoke alarm tamper resist feature has been activated, refer to the **Alarm Tamper Resist Feature** section for removal instructions.

To remove the alarm from the mounting plate, rotate the alarm in the direction of the “OFF” arrow on the cover.

Battery Replacement

This alarm has a low battery monitor circuit which will cause the alarm to “chirp” approximately every 30-40 seconds for a minimum of seven (7) days when the battery gets low. Replace the battery when this condition occurs.

Models **0915CA**, **0916CA**, **PE9CA** and **0918CA** use a 9 V carbon zinc battery (alkaline and lithium batteries may also be used). A fresh battery should last for one year under normal operating conditions. Model **0916CA** supplied with a long-life battery uses a lithium battery such as the Ultralife U9VL-J.

Use only the following 9 volt batteries for replacement:

Carbon-Zinc Type	Eveready 1222 Gold Peak 1604P or 1604S
Alkaline Type	Energizer 522 Duracell MN1604 or MX1604 Gold Peak 1604A Panasonic 6AM6, 6AM-6, 6AM-6PI, 6AM6X and 6LR61 (GA)
Lithium Type	Ultralife U9VL-J

These batteries can be purchased at your local retailer.

WARNING: Use only the batteries specified above. Use of different batteries than the recommended ones, may have a detrimental effect on the smoke alarm. A good safety measure is to replace the battery at least once a year, or at the same time you change your clocks for daylight saving time. Be sure to follow the battery installation instructions printed on the back of the alarm.

Maintenance

NOTE: WEEKLY TESTING IS REQUIRED!

NOTE: If after battery replacement the unit continues to chirp, wait for approximately 7 minutes. The Hush® feature may have been activated accidentally while changing the battery(ies) and will reset automatically.

Cleaning the Alarm

The alarm should be cleaned at least once a year.

- To clean your alarm, remove it from the mounting plate as outlined in previous sections. You can clean the alarm by using compressed air or a vacuum cleaner hose with a soft brush attachment. Blow or vacuum around the perimeter of the alarm to remove dust and dirt. The outside of the alarm can be wiped with a damp cloth (do not use a wet cloth to avoid water entering the unit).
- After cleaning, reinstall your alarm and test your alarm by using the Test button. If cleaning does not restore the alarm to normal operation, the alarm should be replaced.
- Do not paint the unit. Paint will seal the vents and interfere with the sensor's ability to detect smoke. Never attempt to disassemble the unit or clean inside. This action will void your warranty.

Replacing the Alarm

The National Fire Protection Association (NFPA) and Kidde recommend replacing this alarm **ten years** from the date code label (located on the back of the alarm).

Maintenance

Safety Light

Model 0918CA

NOTE: If the safety light appears dim during regular testing, replace both batteries immediately.

Use only the following 9 volt batteries for powering the safet light:

Alkaline Type	Energizer 522
	Duracell MN1604 or MX1604
	Gold Peak 1604A
	Panasonic 6AM6, 6AM-6, 6AM-6PI, 6AM6X and 6LR61 (GA)

These batteries can be purchased at your local retailer.

The safety light has a 6.3 V 250mA fuse lamp with an average life of 50 hours. If the safety light fails to operate with a fresh alkaline battery, then replace the lamp.

To replace the lamp, remove the alarm from the mounting bracket by rotating the alarm in the direction of the "OFF" arrow on the cover (Image 3D, and **Alarm Tamper Resist Feature** section if this feature has been activated).

Open the battery door and remove both batteries from the unit. Grip the lamp holder handle with your thumb and finger and pull out the lamp holder assembly. Slide the old lamp out of the lamp holder and replace it with a new lamp.

Replace with the correct lamp type: **Vanco #FTB 6** which is available at most radio/tv repair stores.

Reinstall the lamp holder. It will snap easily into the base. Put working batteries back in the alarm and remount the alarm on its mounting bracket.

CAUTION: Use only the lamp specified. Use of a different lamp may have a detrimental effect on the smoke alarm or the safety light operation.

NOTE: The safety light is not intended to satisfy the requirements for approved illumination under various local codes. Very thick and/or dense smoke may obscure the light.

Fire Safety

Limitations of Smoke Alarms

WARNING: Please read carefully and thoroughly.

- NFPA 72 states: Life safety from fire in residential occupancies is based primarily on early notification to occupants of the need to escape, followed by the appropriate egress actions by those occupants. Fire warning systems for dwelling units are capable of protecting about half of the occupants in potentially fatal fires. Victims are often intimate with the fire, too old or young, or physically or mentally impaired such that they cannot escape even when warned early enough that escape should be possible. For these people, other strategies such as protection-in-place or assisted escape or rescue are necessary.
- Smoke alarms are devices that can provide early warning of possible fires at a reasonable cost; however, alarms have sensing limitations. Ionization sensing alarms may detect invisible fire particles (associated with fast flaming fires) sooner than photoelectric alarms. Photoelectric sensing alarms may detect visible fire particles (associated with slow, smouldering fires) sooner than ionization alarms. Home fires develop in different ways and are often unpredictable. For maximum protection, Kidde recommends that both ionization and photoelectric alarms be installed.
- A battery powered alarm must have a battery of the specified type, in good condition and installed properly.
- A.C. powered alarms (without battery backup) will not operate if the A.C. power has been cut off, such as by an electrical fire or an open fuse.
- Smoke alarms must be tested regularly to make sure the batteries and the alarm circuits are in good operating condition.
- Smoke alarms cannot provide an alarm if smoke does not reach the alarm. Therefore, smoke alarms may not sense fires starting in chimneys, walls, on roofs, on the other side of a closed door or on a different floor.
- If the alarm is located outside the bedroom or on a different floor, it may not wake up a sound sleeper.

Fire Safety

- The use of alcohol or drugs may also impair one's ability to hear the smoke alarm. For maximum protection, a smoke alarm should be installed in each sleeping area on every level of a home.
- Although smoke alarms can help save lives by providing an early warning of a fire, they are not a substitute for an insurance policy. Home owners and renters should have adequate insurance to protect their lives and property.

Good Safety Habits

Develop and practice a plan of escape!

- Make a floor plan indicating all doors and windows and at least two (2) escape routes from each room. Second story windows may need an escape ladder.
- Have a family meeting and discuss your escape plan, showing everyone what to do in case of fire.
- Determine a place outside your home where you all can meet if a fire occurs.
- Familiarize everyone with the sound of the smoke alarm and train them to leave your home when they hear it.
- Practice a fire drill at least every six months, including fire drills at night. Ensure that small children hear the alarm and wake when it sounds. They must wake up in order to execute the escape plan. Practice allows all occupants to test your plan before an emergency. You may not be able to reach your children. It is important they know what to do.
- Install and maintain fire extinguishers on every level of the home and in the kitchen, basement and garage. Know how to use a fire extinguisher prior to an emergency.
- Current studies have shown smoke alarms may not awaken all sleeping individuals, and that it is the responsibility of individuals in the household that are capable of assisting others to provide assistance to those who may not be awakened by the alarm sound, or to those who may be incapable of safely evacuating the area unassisted.

Fire Safety

What To Do When The Alarm Sounds

- Alert small children in the home.
- Leave immediately by your escape plan. Every second counts, so don't waste time getting dressed or picking up valuables.
- In leaving, don't open any inside door without first feeling its surface. If hot, or if you see smoke seeping through cracks, don't open that door! Instead, use your alternate exit. If the inside of the door is cool, place your shoulder against it, open it slightly and be ready to slam it shut if heat and smoke rush in.
- Stay close to the floor if the air is smoky. Breathe shallowly through a cloth, wet if possible.
- Once outside, go to your selected meeting place and make sure everyone is there.
- Call the fire department from your neighbor's home—not from yours!
- Don't return to your home until the fire officials say that it is all right to do so.

There are situations where a smoke alarm may not be effective to protect against fire as stated in the NFPA Standard 72. For instance:

- a) smoking in bed
- b) leaving children home alone
- c) cleaning with flammable liquids, such as gasoline.

NRC Information

Ionization type smoke alarms use a very small amount of a radioactive element in the sensing chamber to enable detection of visible and invisible combustion products. The radioactive element is safely contained in the chamber and requires no adjustments or maintenance. This smoke alarm meets or exceeds all government standards. It is manufactured and distributed under license from the U.S. Nuclear Regulatory Commission.

Fire Safety

Additional Recommendations

The National Fire Protection Association's Standard 72 provides the following information:

Smoke Detection. Where required by applicable laws, codes, or standards for the specified occupancy, approved single- and multiple-station smoke alarms shall be installed as follows: (1) In all sleeping rooms Exception: Smoke alarms shall not be required in sleeping rooms in existing one- and two-family dwelling units. (2) Outside of each separate sleeping area, in immediate vicinity of the sleeping rooms. (3) On each level of the dwelling unit, including basements Exception: In existing one- and two-family dwelling units, approved smoke alarms powered by batteries are permitted.

Smoke Detection - Are More Smoke Alarms Desirable?

Required number of smoke alarms (as shown in Image 1A and Image 1B): The required number of smoke alarms might not provide reliable early warning protection for those areas separated by a door from the areas protected by the required smoke alarms. For this reason, it is recommended that the householder consider the use of additional smoke alarms for those areas for increased protection.

The additional areas include the basement, bedrooms, dining room, furnace room, utility room, and hallways not protected by the required smoke alarms. The installation of the smoke alarms in the kitchen, attic (finished or unfinished), or garage is normally not recommended, as these locations occasionally experience conditions that can result in improper operation.

Alarms should be installed in accordance with the National Fire Protection Association's Standard 72 (NFPA, Batterymarch Park, Quincy, MA 02269).

Notify your local fire department and insurance company of your smoke alarm installation.

Warranty

If after reviewing this manual you feel that your smoke alarm is defective in any way, do not tamper with the unit. In many cases, the quickest way to exchange your alarm is to return it to the original place of purchase.

Alternatively, you may return it for servicing to Kidde. If you have questions, call Kidde Customer Service at 1-800-880-6788.

5 Year Limited Warranty

Kidde warrants to the original purchaser that this enclosed smoke alarm (but not the battery) will be free from defects in material and workmanship or design under normal use and service for a period of five years from the date of purchase.

The obligation of Kidde under this warranty is limited to repairing or replacing this smoke alarm or any part which we find to be defective in material, workmanship or design, free of charge to the customer, upon sending this smoke alarm with proof of date of purchase, postage and return postage prepaid, to Kidde, Customer Service Department, 130 Esna Park Drive, Markham, ON L3R 1E3. 1-800-880-6788.

This warranty shall not apply to this smoke alarm if it has been damaged, modified, abused or altered after the date of purchase or if it fails to operate due to improper maintenance or inadequate AC or DC electrical power.

The liability of Kidde or any of its parent or subsidiary corporations arising from the sale of this smoke alarm or under the terms of this limited warranty shall not in any case exceed the cost of replacement of this smoke alarm and, in no case shall Kidde or any of its parent or subsidiary corporations be liable for consequential loss or damages resulting from the failure of this smoke alarm or for breach of this or any other warranty, express or implied, even if the loss or damage is caused by the company's negligence or fault.

Since some provinces do not allow limitations on the duration of an implied warranty or do not allow the exclusion or limitation of incidental or consequential damages, the above limitations or exclusions may not apply to you. While this warranty gives you specific legal rights, you may also have other rights which vary from province to province.

Also, Kidde makes no warranty, express or implied, written or oral, including that of merchantability or fitness for any particular purpose, with respect to the battery.

The above warranty may not be altered except in writing signed by both parties hereto.

Warranty

Model **0916CA** with Ultralife lithium battery:

10 Year Limited Warranty

Kidde warrants to the Purchaser that this enclosed smoke alarm, and Ultralife Batteries Inc. warrants to the Purchaser that the enclosed Ultralife 9 volt lithium battery when used with this enclosed smoke alarm, will be free from defects in material, workmanship or design under normal use and service for a period of ten years from the date of purchase.

The obligation of Kidde under this warranty is limited to repairing or replacing this smoke alarm, or any part which we find to be defective in material, workmanship or design, free of charge to the customer.

To return a defective Ultralife battery, return the battery along with proof of purchase and a note describing the nature of difficulty to: Ultralife Batteries Inc., P.O. Box 622, 1350 Route 88 South, Newark, New York 14513. To return a defective smoke alarm, return this alarm along with proof of date of purchase, postage and return postage prepaid to: Kidde, Customer Service Department, 130 Esna Park Drive, Markham ON L3R 1E3. 1-800-880-6788.

This warranty shall not apply to this smoke alarm if it has been damaged, modified, abused or altered after the date of purchase or if it fails to operate due to improper maintenance or inadequate AC or DC electrical power.

The liability of Kidde or any of its parent or subsidiary corporations arising from the sale of this smoke alarm or the enclosed Ultralife battery under the terms of this limited warranty shall not in any case exceed the cost of replacement of this smoke alarm or this battery and in no case shall Kidde or any of its parent or subsidiary corporations be liable for consequential loss or damages resulting from the failure of this smoke alarm or for breach of this or any other warranty, express or implied, even if the loss or damage is caused by the company's negligence or fault.

Since some provinces do not allow limitations on the duration of an implied warranty or do not allow the exclusion or limitation of incidental or consequential damages, the above limitations or exclusions may not apply to you. While this warranty gives you specific legal rights, you may also have other rights which vary from province to province.

The above warranty may not be altered except in writing signed by both parties hereto.