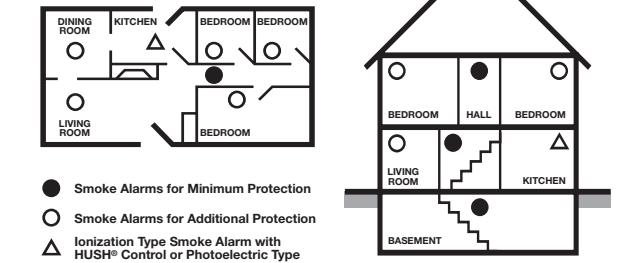


SMOKE ALARM USER'S GUIDE
MODEL 0914CA • 9 Volt Battery Operated Smoke Alarm

1. RECOMMENDED LOCATIONS

- Locate the first alarm in the immediate area of the bedrooms. Try to protect the exit path as the bedrooms are usually farthest from the exit. If more than one sleeping area exists, locate additional alarms in each sleeping area.
- Locate additional alarms to protect any stairway as stairways act like chimneys for smoke and heat.
- Locate at least one alarm on every floor level.
- Locate an alarm in every bedroom.
- Locate an alarm in every room where electrical appliances are operated (i.e. portable heaters or humidifiers).
- Locate an alarm in every room where someone sleeps with the door closed. The closed door may prevent the alarm from waking the sleeper.
- Smoke, heat, and combustion products rise to the ceiling and spread horizontally. Mounting the smoke alarm on the ceiling in the center of the room places it closest to all points in the room. Ceiling mounting is preferred in ordinary residential construction.
- When mounting an alarm on the ceiling, locate it at a minimum of 10cm (4") from the side wall. (see Image 2B)



CONTENTS OF THIS MANUAL

- 01 ... RECOMMENDED LOCATIONS
- 02 ... LOCATIONS TO AVOID
- 03 ... INSTALLATION INSTRUCTIONS
- 04 ... OPERATION AND TESTING
- 05 ... NUISANCE ALARMS
- 06 ... MAINTENANCE
- 07 ... LIMITATIONS OF SMOKE ALARMS
- 08 ... GOOD SAFETY HABITS
- 09 ... NRC INFORMATION
- 10 ... NFPA REQUIRED PROTECTION
- 11 ... SERVICE AND WARRANTY

- When mounting the alarm on the wall, use an inside wall with the top edge of the alarm at a minimum of 10cm (4") and a maximum of 30.5cm (12") below the ceiling (see Image 2B).
- Put smoke alarms at both ends of a bedroom hallway or large room if the hallway or room is more than 9.1m (30') long.
- Install Smoke Alarms on sloped, peaked or cathedral ceilings at or within 0.9m (3ft) of the highest point (measured horizontally). NFPA 72 states: "Smoke alarms in rooms with ceiling slopes greater than .3m in 2.4m (1ft in 8ft) horizontally shall be located on the high side of the room." NFPA 72 states: "A row of alarms must be spaced and located within 0.9m (3ft) of the peak of the ceiling measured horizontally" (see Image 2B).
- For mobile home installation, select locations carefully to avoid thermal barriers that may form at the ceiling. For more details, see MOBILE HOME INSTALLATION below.

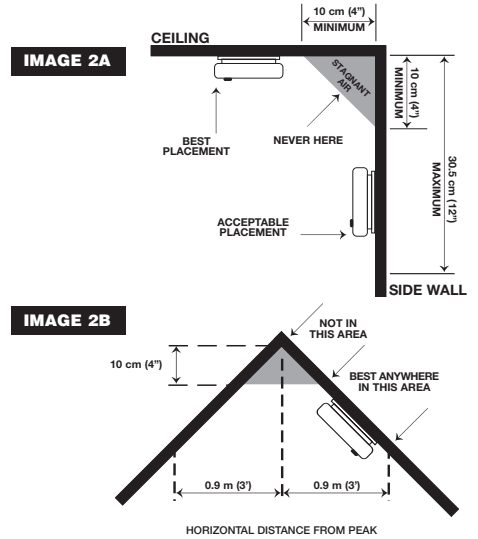
MOBILE HOME INSTALLATION

Mobile homes built in the past five to seven years have been designed to be energy efficient. Install smoke alarms as recommended in RECOMMENDED LOCATIONS and Image 1A & B). In mobile homes that are not well insulated compared to present standards, extreme heat or cold can be transferred from the outside to the inside through poorly insulated walls and roof. This may create a thermal barrier which can prevent the smoke from reaching an alarm mounted on the ceiling. In such units, install the smoke alarm on an inside wall with the top edge of the alarm at a minimum of 10cm (4") and a maximum of 30.5cm (12") below the ceiling (see Image 2A & B). If you are not sure about the insulation in your mobile home, or if you notice that the outer walls and ceiling are either hot or cold, install the alarm on an inside wall. For minimum protection, install at least one alarm close to the bedrooms. For additional protection, see Image 1A & B).

WARNING: TEST YOUR SMOKE ALARM OPERATION AFTER MOBILE HOME HAS BEEN IN STORAGE, BEFORE EACH TRIP AND AT LEAST ONCE A WEEK DURING USE.

2. LOCATIONS TO AVOID

- Do not install within 0.9 m (3') of the following: The door to a kitchen, or a bathroom that contains a tub or shower, forced air ducts used for heating or cooling, ceiling or whole house ventilating fans, or other high air-flow areas.
- Do not place the alarm where drapes or other objects will block the sensor. Smoke must be able to reach the sensor to accurately detect conditions.
- Do not install in peaks of vaulted ceilings, "A" frame ceilings or gabled roofs. (Less than 10 cm (4") from the peak of an "A" frame type ceiling.)
- Install at least 30.5 cm (12") away from fluorescent lights as electronic noise may cause nuisance alarms.



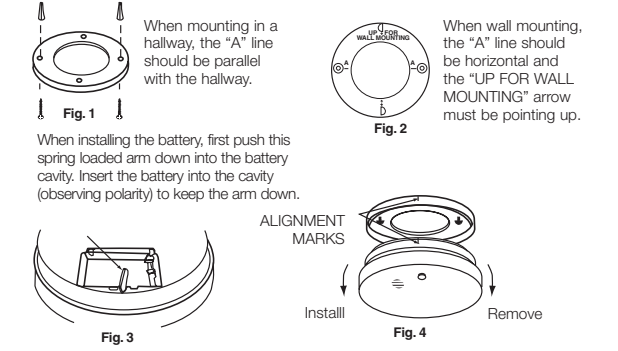
- Keep out of insect infested areas. Avoid excessively dusty, dirty or greasy areas. Dust particles may cause nuisance alarms or failure to alarm.
- Extreme temperatures may affect the sensitivity of the alarm. Do not install in areas where the temperature is colder than 4.4°C (40°F) or hotter than 37.8°C (100°F).
- Do not install in areas where the relative humidity (RH) is greater than 85%. Very humid areas, with moisture or steam, can cause nuisance alarms.
- Avoid placing ionization smoke alarms in kitchen areas. Normal cooking may cause nuisance alarms. If a kitchen alarm is desired, it should have an alarm silence feature or be a photoelectric type.
- Do not place in the garage. Particles of combustion are present when you start your automobile.

3. INSTALLATION INSTRUCTIONS

CAUTION: THIS UNIT IS SEALED. THE COVER IS NOT REMOVABLE!

1. Remove the mounting plate from the back of the alarm by holding the mounting plate and twisting the alarm in the direction indicated by the "OFF" arrow on the alarm cover.
2. To insure aesthetic alignment of the alarm with the hallway or wall, the "A" line on the mounting plate must be parallel with the hallway when ceiling mounting or horizontal when wall mounting.
3. After selecting the proper smoke alarm location as described in Section 1, attach the mounting plate to the ceiling as shown in Figure 1. For wall mounting see Figure 2. Place mounting plate on the wall. Be sure the "UP FOR WALL MOUNTING" text and arrow are facing up. Use the screws and anchors provided to secure the mounting plate.
4. Battery installation instructions are provided on the inside of the battery compartment. To ensure proper installation of the smoke alarm battery, follow the instructions.
5. When installing the battery, press the battery reminder tab down into the battery compartment and install the battery (see Figure 3).

CAUTION: IF THE BATTERY REMINDER TAB IS NOT HELD DOWN IN THE BATTERY COMPARTMENT BY THE BATTERY, THE UNIT WILL NOT ATTACH TO TO THE MOUNTING PLATE.



6. Alignment marks are provided on the edge of the trim plate and the alarm. After installing the mounting plate, place the alarm on the mounting plate with the alignment marks lined up. Twist the alarm in the direction indicated by the "ON" arrow on the alarm cover (see Figure 4) until it locks in place.
7. After installation, test your alarm by depressing and holding down the test button for several seconds, or by blowing smoke into the alarm. This should sound the alarm.

CAUTION: DUE TO THE LOUDNESS (85 DECIBELS) OF THE ALARM, ALWAYS STAND AN ARMS-LENGTH AWAY FROM THE UNIT WHEN TESTING.

CAUTION! Early warning fire detection is best achieved by the installation of fire detection equipment in all rooms and areas of the household as follows: A smoke alarm installed in each separate sleeping area (in the vicinity of – but outside of the bedroom) and heat or smoke alarms in the living room, dining room, kitchen, hallways, attic, furnace room, closets, utility storage room, basement and attached garage.

4. OPERATION AND TESTING

The smoke alarm is operating once a fresh battery is installed and testing is complete. OPERATION: When products of combustion are sensed, the unit sounds a loud 85db pulsating alarm, and the red LED rapidly flashes every 2 seconds until the air is cleared. FLASHING LED LIGHT: This smoke alarm is equipped with a flashing red indicator light. The red LED is located under the test button and will flash every 45 seconds to indicate that the smoke alarm is receiving power. TESTING: Test by pushing the test button on the cover and holding it down for a minimum of 2 seconds. This will sound the alarm if the electronic circuitry, alarm, and battery are working. If the alarm does not sound, the unit has defective batteries or other failure. DO NOT use an open flame to test your alarm, you could damage the alarm or ignite combustible materials and start a structure fire. TEST THE ALARM WEEKLY TO ENSURE PROPER OPERATION: An erratic or low sound coming from your alarm may indicate a defective alarm, and it should be returned for service (see Section 11).

5. FALSE ALARMS

Smoke alarms are designed to minimize nuisance alarms. Cigarette smoke will not normally set off the alarm, unless the smoke is blown directly into the alarm. Combustion particles from cooking may set off the alarm if the alarm is located close to the cooking area. Large quantities of combustible particles are generated from spills or when broiling. Using the fan on a range hood which vents to the outside (non-recirculating type) will also help remove these combustible products from the kitchen. If the alarm does alarm, check for fires first. If a fire is discovered, get out and call the fire department. If no fire is present, check to see if one of the reasons listed in Section 2 may have caused the alarm.

6. MAINTENANCE

BATTERY REPLACEMENT

To replace the battery, remove the alarm from the mounting plate by rotating the alarm in the direction of the "OFF" arrow on the cover (see Section 3, Figure 1). The Model 0914 Smoke Alarm is powered by a 9V carbon zinc battery (alkaline and lithium batteries may also be used). A fresh battery should last for one year under normal operating conditions. This alarm has a low battery monitor circuit

which will cause the alarm to "chirp" approximately every 30 seconds for a minimum of seven days when the battery gets low. Replace the battery when this condition occurs.

Continued chirping after battery replacement may indicate defective circuitry, and the alarm should be returned for service (see Section 11)

USE ONLY THE FOLLOWING 9 VOLT BATTERIES FOR SMOKE ALARM REPLACEMENT.

- Carbon Zinc Type: EVEREADY 216, 1222; GOLD PEAK 1604P, 1604S
- Alkaline Type: ENERGIZER 522; DURACELL MN1604, MX1604; GOLD PEAK 1604A
- Lithium Type: ULTRALIFE U9VL-J

NOTE: WEEKLY TESTING IS REQUIRED.

WARNING!! USE ONLY THE BATTERIES SPECIFIED. USE OF DIFFERENT BATTERIES MAY HAVE A DETRIMENTAL EFFECT ON THE UNIT.

CLEANING YOUR ALARM

NOTE: Clean the alarm at least once a year, for proper operation. To clean your alarm, remove it from the mounting bracket as outlined in the beginning of this section. You can clean the interior of your alarm (sensing chamber) by using compressed air or a vacuum cleaner hose and blowing or vacuuming through the openings around the perimeter of the alarm. The outside of the alarm can be wiped with a damp cloth. After cleaning, reinstall your alarm. Test your alarm by using the test button.

7. LIMITATIONS OF SMOKE ALARMS

WARNING: Please read carefully and thoroughly.

- NFPA Standard 72 states: Life safety from fire in residential occupancies is based primarily on early notification to occupants of the need to escape, followed by the appropriate egress actions by those occupants. Fire warning systems for dwelling units are capable of protecting about half of the occupants in potentially fatal fires. Victims are often intimate with the fire, too old or young, or physically or mentally impaired such that they cannot escape even when warned early enough that escape should be possible. For these people, other strategies such as protection-in-place or assisted escape or rescue are necessary.
- Smoke alarms are devices that can provide early warning of possible fires at a reasonable cost; however, alarms have sensing limitations. Ionization type alarms offer a broad range of fire sensing capabilities but are better at detecting fast flaming fires than slow smoldering fires. Photoelectric alarms sense smoldering fires better than flaming fires. Home fires develop in different ways and are often unpredictable. Neither type of alarm (photoelectric or ionization) is always best, and a given alarm may not always provide warning of a fire.
- A battery powered alarm must have a battery of the specified type, in good condition and installed properly.
- AC powered alarms (without battery backup) will not operate if the AC power has been cut off, such as by an electrical fire or an open fuse.
- Smoke alarms must be tested regularly to make sure the batteries and the alarm circuits are in good operating condition.
- Smoke alarms cannot provide an alarm if smoke does not reach the alarm. Therefore, smoke alarms may not sense fires starting in chimneys, walls, on roofs, on the other side of a closed door or on a different floor.

9. NRC INFORMATION

Ionization type smoke alarms use a very small amount of a radioactive element in the sensing chamber to enable detection of visible and invisible combustion products. The radioactive element is safely contained in the chamber and requires no adjustments or maintenance. This smoke alarm meets or exceeds all government standards. It is manufactured and distributed under license from the U.S. Nuclear Regulatory Commission.

10. NFPA REQUIRED PROTECTION

The National Fire Protection Association's Standard 72 reads as follows: Smoke alarms shall be installed outside each separate sleeping area in the immediate vicinity of the bedrooms and on each additional story of the family living unit, including basements and excluding crawl spaces and unfinished attics. In new construction, a smoke alarm also shall be installed in each sleeping room. Smoke Detection – Are More Smoke Alarms Desirable? The required number of smoke alarms (as shown in 1A and 1B) might not provide reliable early warning protection for those areas separated by a door from the areas protected by the required smoke alarms. For this reason, it is recommended that the householder consider the use of additional smoke alarms for those areas for increased protection. The additional areas include the basement, bedrooms, dining room, furnace room, utility room, and hallways not protected by the required smoke alarms. The installation of the smoke alarms in the kitchen, attic (finished or unfinished), or garage is normally not recommended, as these locations occasionally experience conditions that can result in improper operation.

Alarms should be installed in accordance with the National Fire Protection Association's Standard 72 (NFPA, Batterymarch Park, Quincy, MA 02269). NOTIFY YOUR LOCAL FIRE DEPARTMENT AND INSURANCE COMPANY OF YOUR SMOKE ALARM INSTALLATION.

11. SERVICE AND WARRANTY

If after reviewing this manual you feel that your smoke alarm is defective in any way, do not tamper with the unit. In many cases, the quickest way to exchange your alarm is to return it to the original place of purchase. Alternatively, you may return it for servicing to Pyrene Corporation. If you have questions, call Pyrene Corporation Customer Service at 1-800-880-6788.

- If the alarm is located outside the bedroom or on a different floor, it may not wake up a sound sleeper.
- The use of alcohol or drugs may also impair one's ability to hear the smoke alarm. For maximum protection, a smoke alarm should be installed in each sleeping area on every level of a home.
- Although smoke alarms can help save lives by providing an early warning of a fire, they are not a substitute for an insurance policy. Home owners and renters should have adequate insurance to protect their lives and property.

8. GOOD SAFETY HABITS

Develop and practice a plan of escape!

- Install and maintain fire extinguishers on every level of the home and in the kitchen, basement and garage. Know how to use a fire extinguisher prior to an emergency.
- Make a floor plan indicating all doors and windows and at least two (2) escape routes from each room. Second story windows may need an escape ladder.
- Have a family meeting and discuss your escape plan, showing everyone what to do in case of fire.
- Determine a place outside your home where you all can meet if a fire occurs.
- Familiarize everyone with the sound of the smoke alarm and train them to leave your home when they hear it.
- Practice a fire drill at least every 6 months, including fire drills at night. Ensure that small children hear the alarm and wake when it sounds. They must wake up in order to execute the escape plan. Practice allows all occupants to test your plan before an emergency. You may not be able to reach your children. It is important they know what to do.

ALARM EXIT PROCEDURE

- Alert small children in the home.
- Leave immediately by your escape plan. Every second counts, so don't waste time getting dressed or picking up valuables.
- In leaving, don't open any inside door without first feeling its surface. If hot, or if you see smoke seeping through cracks, don't open that door! Instead, use your alternate exit. If the inside of the door is cool, place your shoulder against it, open it slightly and be ready to slam it shut if heat and smoke rush in.
- Stay close to the floor if the air is smoky. If possible do not breathe too deeply to avoid smoke inhalation. Breathe through a cloth (preferably wet), if possible.
- Once outside, go to your selected meeting place and make sure everyone is there.
- Call the fire department from your neighbor's home – not from yours!
- Don't return to your home until the fire officials say that it is all right to do so.

There are situations where a smoke alarm may not be effective to protect against fire as stated in the NFPA Standard 72. For instance:

- smoking in bed;
- leaving children unsupervised;
- cleaning with flammable liquids, such as gasoline.

ONE YEAR LIMITED WARRANTY

Pyrene Corporation warrants to the original purchaser that the enclosed smoke alarm (but not the battery) will be free from defects in material and workmanship or design under normal use and service for a period of one year from the date of purchase. The obligation of Pyrene Corporation under this warranty is limited to repairing or replacing the smoke alarm or any part which we find to be defective in material, workmanship or design, free of charge to the customer, upon sending the smoke alarm with proof of date of purchase, postage and return postage prepaid, to Pyrene Corporation, Customer Service Department, 130 Esna Park Drive, Markham, ON L3R 1E3. 1-800-880-6788.

This warranty shall not apply to the smoke alarm if it has been damaged, modified, abused or altered after the date of purchase or if it fails to operate due to improper maintenance or inadequate AC or DC electrical power.

The liability of Pyrene Corporation or any of its parent or subsidiary corporations arising from the sale of this smoke alarm or under the terms of this limited warranty shall not in any case exceed the cost of replacement of this smoke alarm and, in no case, shall Pyrene Corporation or any of its parent or subsidiary corporations be liable for consequential loss or damages resulting from the failure of this smoke alarm or for breach of this or any other warranty, express or implied, even if the loss or damage is caused by the company's negligence or fault.

Since some provinces do not allow limitations on the duration of an implied warranty or do not allow the exclusion or limitation of incidental or consequential damages, the above limitations or exclusions may not apply to you. While this warranty gives you specific legal rights, you may also have other rights which vary from province to province.

Also, Pyrene Corporation makes no warranty, express or implied, written or oral, including that of merchantability or fitness for any particular purpose, with respect to the battery.

The above warranty may not be altered except in writing signed by both parties hereto.