

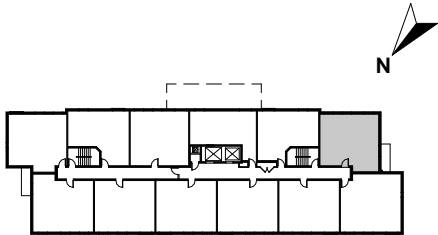
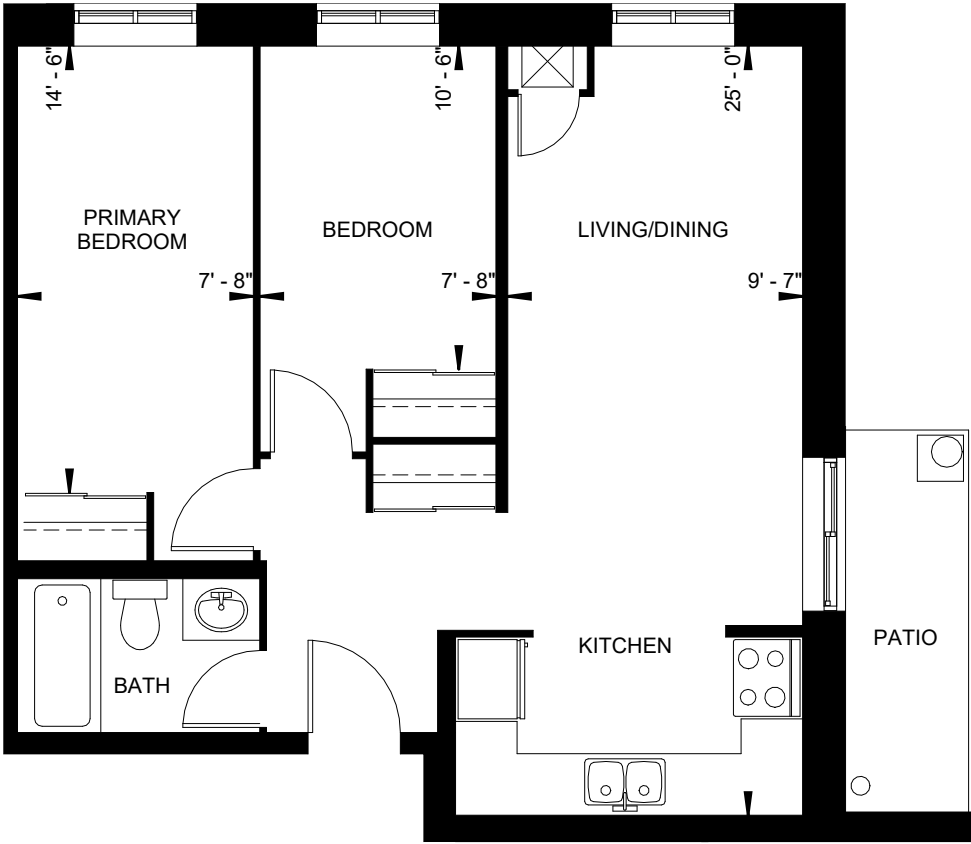
# BLOOMINGDALE MEWS

593 STRASBURG ROAD  
KITCHENER, ON

FLOORS  
1, 2, 3, 4,  
5, 6, 7, 8

## THE BANFF

2 BED + 1 BATH | 500 ft<sup>2</sup>



104-804

NOTE: ACTUAL USEABLE FLOOR SPACE MAY VARY FROM STATED FLOOR PLAN AREA, ALL FLOOR PLANS ARE THE ARTISTS CONCEPT, SUBJECT TO CHANGE AND ALL DIMENSIONS ARE APPROXIMATE. E & O.E.



LEASING  
OFFICE

C: (519) 240-6132  
E: LEASING@KINGSLEYCA.COM  
W: WWW.KINGSLEYCA.COM