




E18HTEENTM
ERSKINE AT YONGE

WE HAVE YOUR **NUMBER**



1+5=18 1 COVETED LOCATION + 5 STAR AMENITIES = **18 ERSKINE**

A FORMULA FOR YOUR DREAM LIFESTYLE

AT 18 ERSKINE, THERE'S A UNIQUE FORMULA FOR LIVING YOUR DREAM LIFESTYLE.
A COMBINATION OF A BUSTLING NEIGHBOURHOOD AND UPSCALE SPACES
WHERE LUXURY RENTAL LIVING MEETS LOCATION.



WELCOME TO I8 ERSKINE

EXPERIENCE RENTAL LIVING WITH DESIGNER ELEMENTS INFUSED INTO EVERY SUITE AND RELISH THE ABUNDANT AMENITIES THAT CATER TO YOUR WELLNESS, SOCIAL AND PET NEEDS.

ENJOY THE ADDED WHITE GLOVE SERVICES THAT ENSURE YOUR EVERYDAY IS ELEVATED WITH UNIQUE THOUGHTFUL PERKS THAT PRIORITIZE YOUR LIFESTYLE.



DREAM IT, LIVE IT

MORE THAN A LOCATION TO LIVE AT, 18 ERSKINE IS A LIFESTYLE DESTINATION.

ITS STUNNING, MODERN ARCHITECTURE BOASTS 35-STOREYS AND 315 SUITES OF SOPHISTICATED DESIGNER STYLE, WITH UNPRECEDENTED VIEWS OF NORTH TORONTO, DOWNTOWN TORONTO, LAKE ONTARIO, LEASIDE AND FOREST HILL.

STEPS AWAY FROM THE EGLINTON TRANSIT HUB, YOUR LIFE AT 18 ERSKINE REVOLVES AROUND THE BEST OF PARKS, RESTAURANTS AND SHOPPING.



18 ERSKINE

18 ERSKINE



COVET YOUR ENTRANCE

First impressions matter. Make your entrance into a stunning lobby adorned with plush lounge seating and an inviting gas fireplace.

Your 24-hour Concierge will not only know your pets' names but will also provide white glove services catered to you.



LIFESTYLE WITH BENEFITS

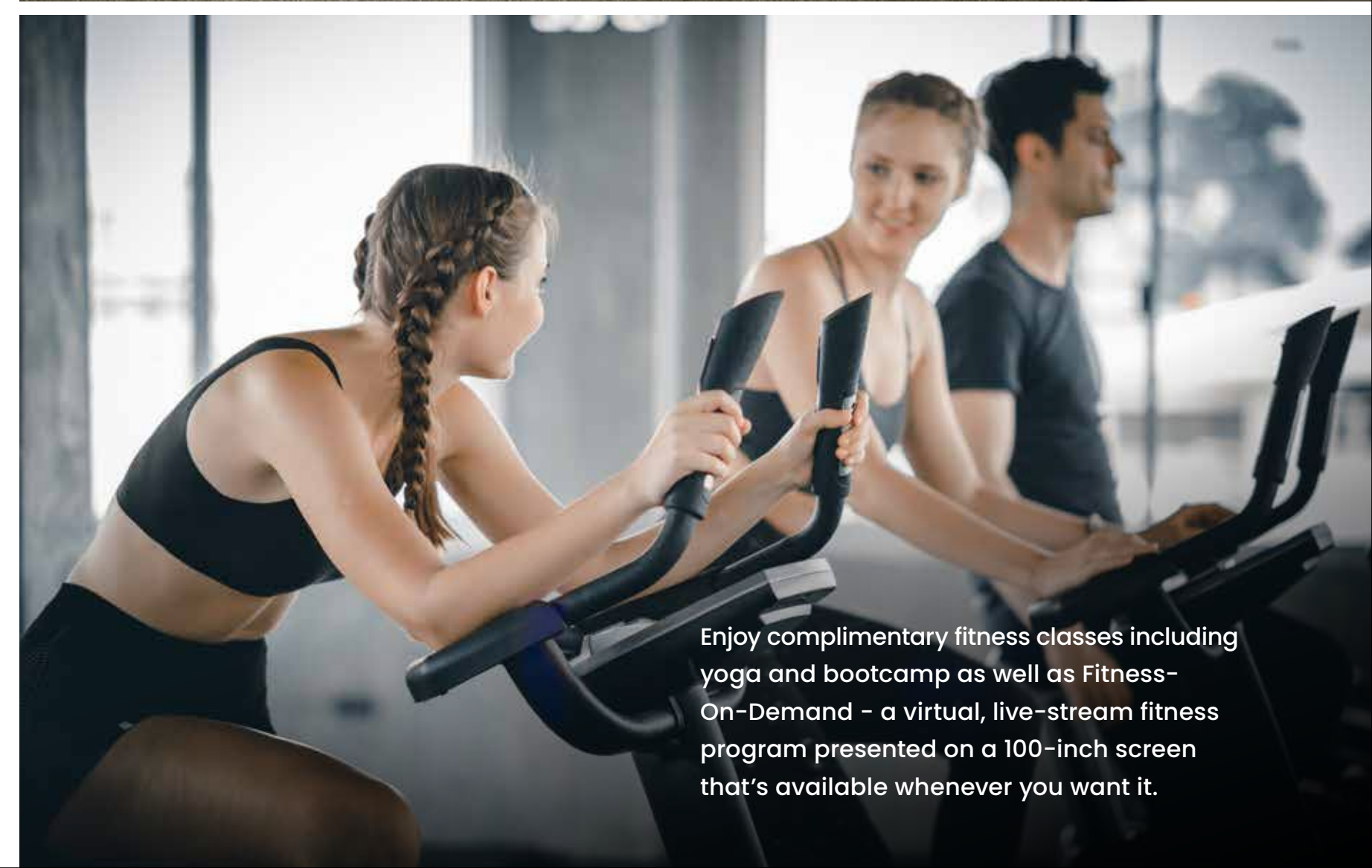
IMAGINE LIVING AS A COSMOPOLITAN, WITH ALL THE PERKS AND AMENITIES YOU COULD EVER DREAM OF. BUT WHY DREAM WHEN YOU CAN SIMPLY LIVE AT 18 ERSKINE.

BUILDING AMENITIES



WELLNESS NEVER LOOKED SO GOOD

Embrace next level wellness in our Wi-Fi equipped **YOU! Fitness** centre furnished with a motion cage, boxing simulator, treadmills, ellipticals, weights and spin bikes. The Yoga/TRX Studio invites you to find your peace of mind or stretch out your potential with TRX training.



Enjoy complimentary fitness classes including yoga and bootcamp as well as Fitness-On-Demand - a virtual, live-stream fitness program presented on a 100-inch screen that's available whenever you want it.



When it's time to relax, cool down in a spa-inspired pool with floor-to-ceiling illumination and blue ombre tiled walls. Afterwards, grab a rejuvenating steam in the private change rooms for an enriching experience.

A modern lounge interior with a fireplace, large TV, and comfortable seating. The room features a dark wood wall with a large TV displaying the 'E18HTEEN' logo. Below the TV is a long, low fireplace with a glowing blue flame. In the foreground, there are two large, light-colored ottomans and a round coffee table. In the background, there is a dining area with a table and chairs, and a large window with white curtains. The floor is covered with a patterned rug.

SOCIAL VIBES GUARANTEED

The **Fireplace Lounge** invites you to watch TV and spend time with friends beside a 100-inch glowing fire. For more social fare, make new acquaintances in the luxurious **Seating Lounge**. If you're celebrating a special occasion, reserve the private **Dining Lounge** and **Chef's Kitchen**. There's a table for 12, gourmet catering kitchen, deluxe sound system and access to **The Bar** - your exclusive hang out spot for the night. For your convenience, all of these spaces have complimentary Wi-Fi.

For more casual moments, chill at [The Bistro](#) on the second floor, a café-styled space that serves up two flat screen TVs, complimentary Netflix and Wi-Fi with direct access to the outdoor [Barbeque Terrace](#).





THE EVEN GREATER OUTDOORS

Being in nature is good for the spirit and soul. Find your place on the outdoor **Barbeque Terrace** complete with a fireplace, BBQ stations and seating areas perfect for hosting dinners and epic evenings under the stars.



COWORK STUDIO*



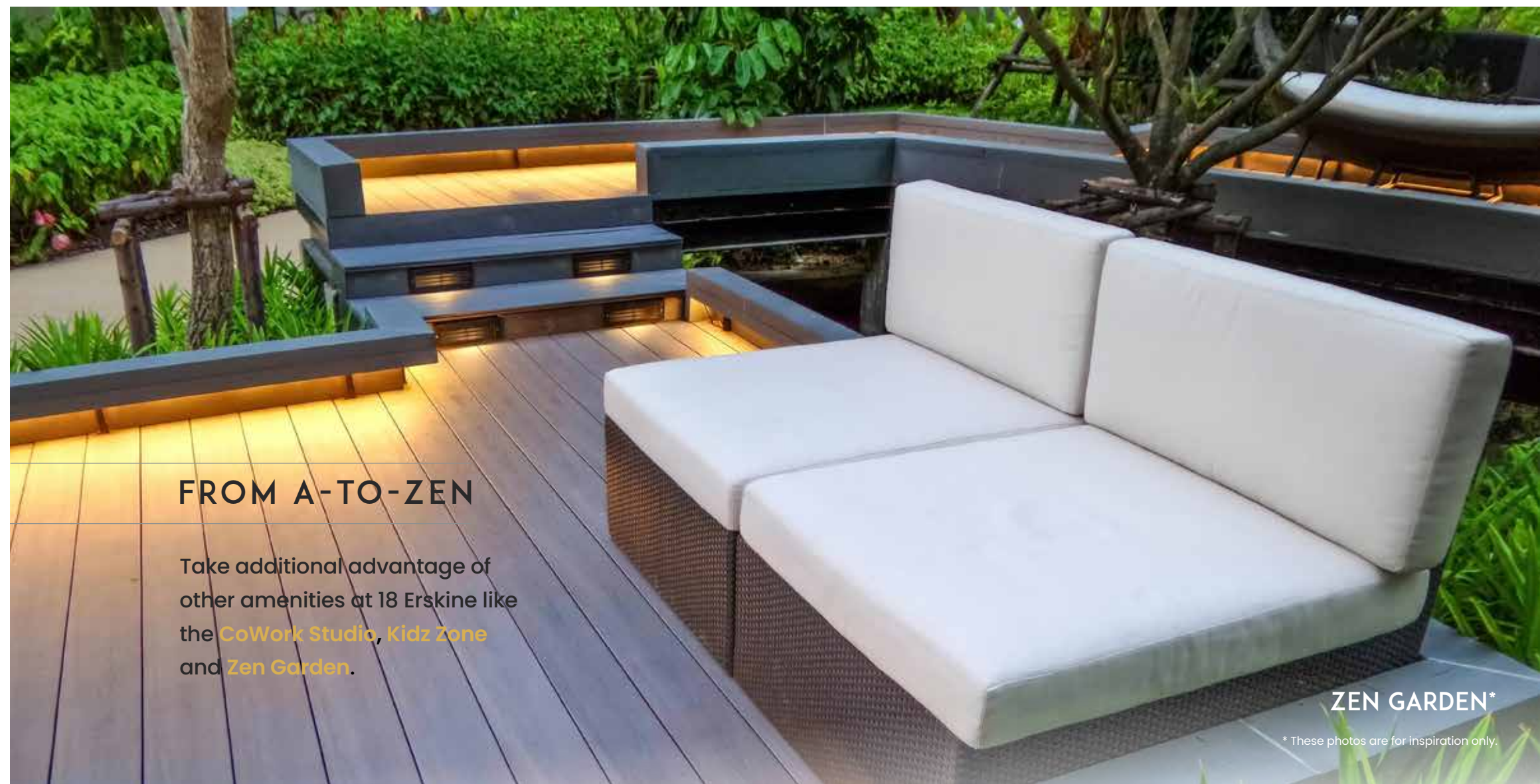
THE BAR*



DINING LOUNGE*



KIDZ ZONE*



FROM A-TO-ZEN

Take additional advantage of other amenities at 18 Erskine like the **CoWork Studio**, **Kidz Zone** and **Zen Garden**.

ZEN GARDEN*

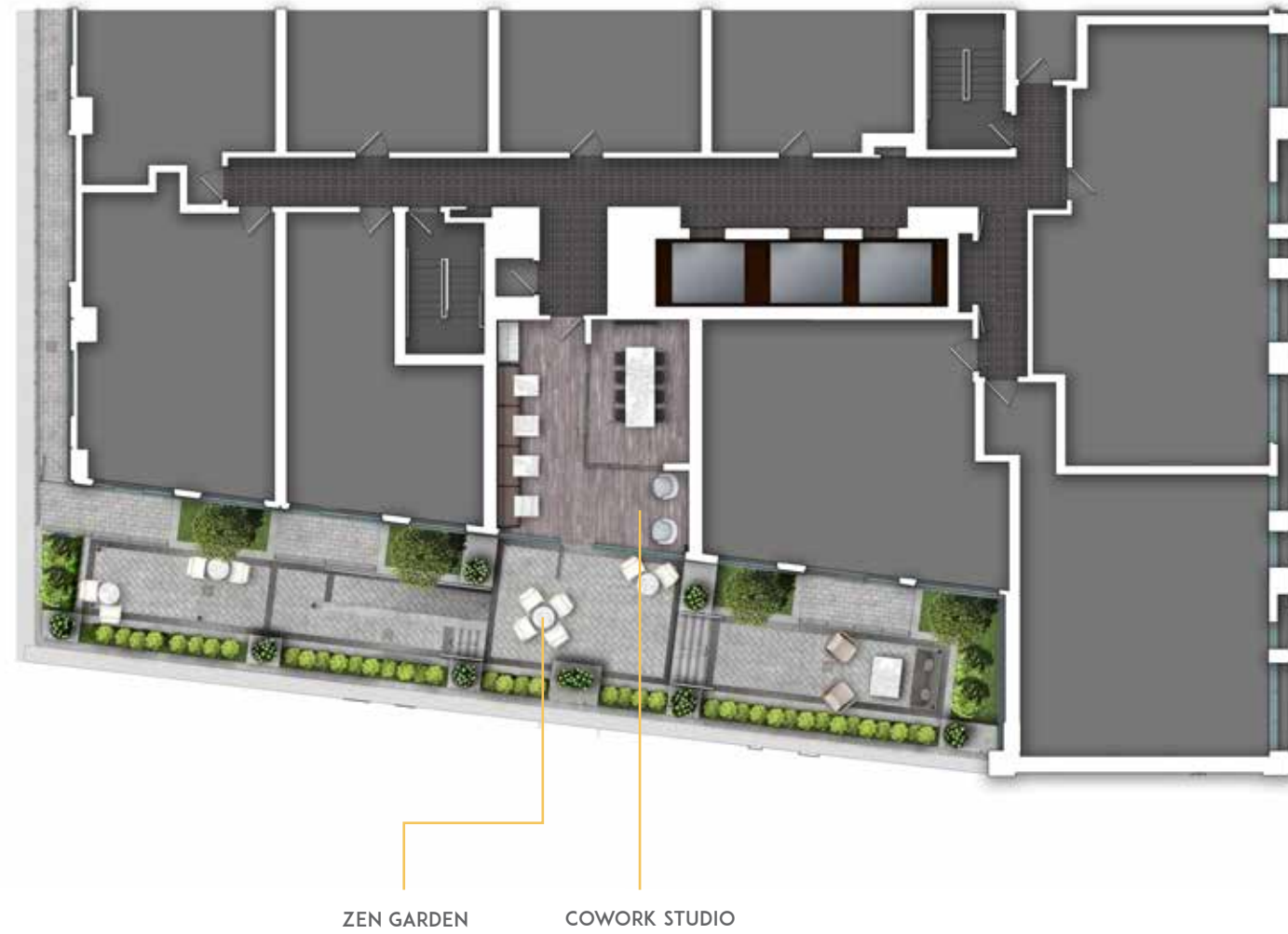
* These photos are for inspiration only.



SECOND FLOOR AMENITIES



THIRD FLOOR AMENITIES





THE SUITE LIFE

THOUGHTFULLY DESIGNED INTERIORS WELCOME YOU WITH FLOOR-TO-CEILING WINDOWS PRESENTING PANORAMIC CITYSCAPE AND PARK VIEWS. WHEN PRIVACY IS DESIRED THERE ARE DESIGNER BUILT-IN WHITE ROLLER BLINDS THROUGHOUT EACH SUITE. CHEF-INSPIRED KITCHENS FEATURE AN ISLAND IDEAL FOR ENTERTAINING, WHILE YOUR LIVING SPACE OPENS ON TO YOUR PRIVATE OUTDOOR TERRACE OR BALCONY.

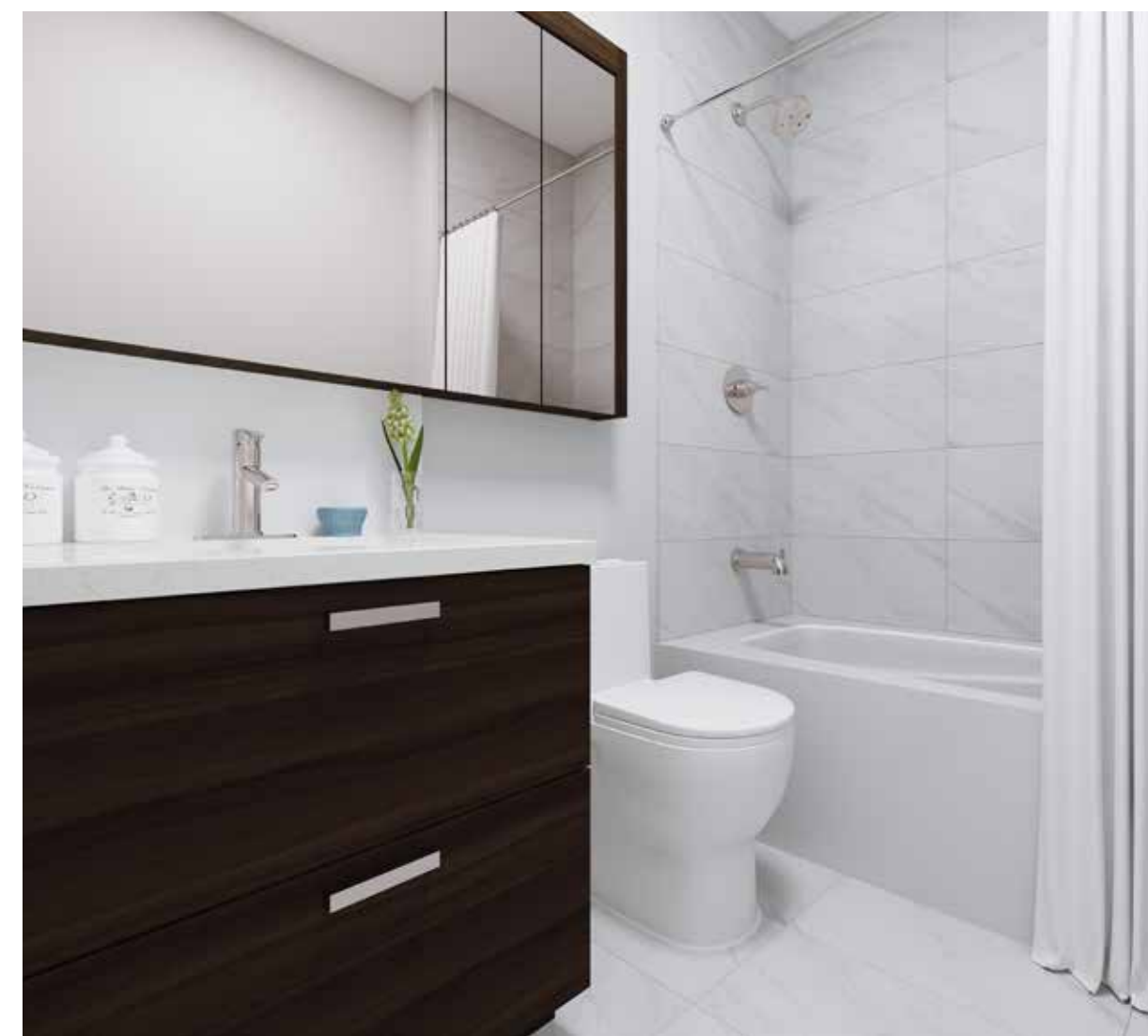
RETREAT TO AN EXTRA SPACIOUS BEDROOM, FEATURING CLOSETS WITH MİRRORED SLIDING DOORS AND BUILT-IN SHELVEING. YOUR BATHROOM IS STYLED WITH CONTEMPORARY VANITY CABINETRY, AND AN EXTENDED MİRRORED MEDICINE CABINET FOR EXTRA STORAGE. DESIGNER PORCELAIN TILES ADORN THE WALLS AND THE FLOOR, WHILE AN EXTRA-DEEP SOAKER TUB RAISES THE BAR ON PURE LUXURY.

SUITES



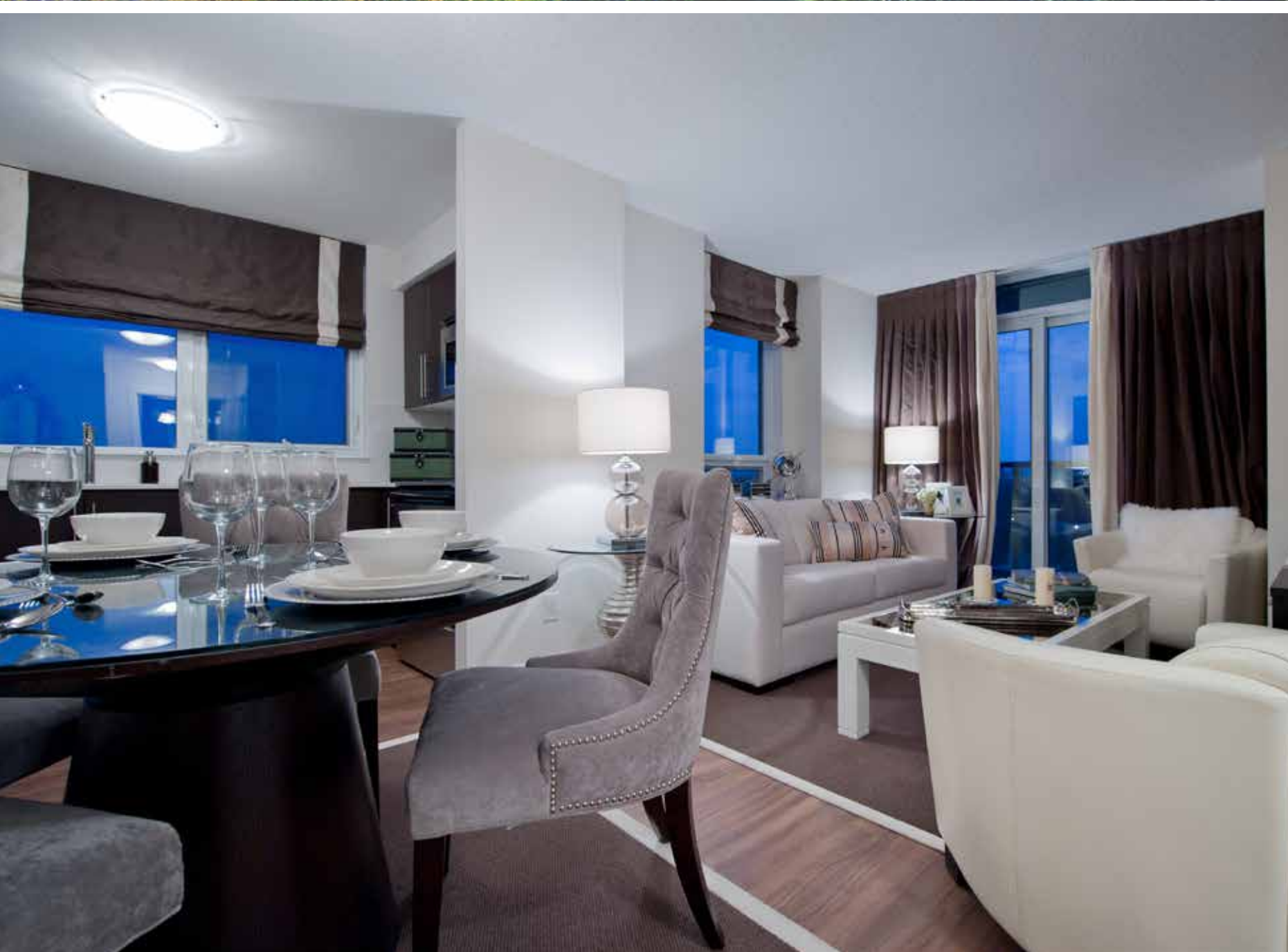








FEATURES & FINISHES



IT'S ALL IN THE DETAILS

CLASSIC SERIES KITCHEN

- ✓ Appliances – ENERGY STAR® stainless steel Fisher and Paykel™ refrigerator, built-in ENERGY STAR® 24-inch Whirlpool™ stainless steel dishwasher, built-in Whirlpool™ ceramic cooktop, stainless steel oven and microwave oven with fan hood
 - Designer cabinetry with ample storage
 - Quartz backsplash with modern square edge
 - Quartz countertop with modern square edge
 - Sleek stainless steel rectangular undermount sink
- ✓ Low-flow chrome, single lever Delta™ kitchen faucet
 - Kitchen island with built-in breakfast bar and USB outlet*

SIGNATURE SERIES KITCHEN

- ✓ Appliances – ENERGY STAR® cabinetry-panel-covered Blomberg™ refrigerator, built-in ENERGY STAR® 24-inch Whirlpool™ cabinetry-panel-covered dishwasher, built-in Whirlpool™ ceramic cooktop, stainless steel oven and microwave oven with fan hood
 - Designer cabinetry with pantry for extra storage
 - Quartz backsplash with modern square edge
 - Quartz countertop with modern square edge
 - Sleek stainless steel rectangular undermount sink
- ✓ Low-flow chrome, single lever Delta™ kitchen faucet
 - Kitchen island with a stone waterfall-edged breakfast bar*
 - Kitchen island with USB outlet*

LIVING ROOM

- Premium plank laminate floating floor with acoustic underlay in foyer, kitchen, den*, living room, dining area and bedroom(s)
- Designer built-in white roller blinds throughout the suite
- Smooth ceilings throughout the suite
- Private balcony/terrace with breathtaking panoramic views*
- ✓ Floor-to-ceiling energy efficient windows
- ✓ In-suite climate control thermostat for heating and air-conditioning system
- Pre-wired internet and cable outlets throughout the suite
- ✓ Individual metering of electricity, heating, cooling and hot water consumption
- ✓ In-suite laundry – white stacked front loading Blomberg™ dryer and ENERGY STAR® high efficiency front loading Blomberg™ washer
- Mirrored sliding closet doors throughout the suite

BEDROOM

- Closet with built-in organizer shelves
- Large walk-in closets*
- Spacious bedrooms fit for a queen size bed
- Private master ensuite in all 2 bedroom models

BATHROOM

- Designer two-drawer vanity cabinetry
- Designer white modern rectangular vanity sink and backsplash
- Extended mirror medicine cabinet with extra storage*
- ✓ Delta™ chrome rain showerhead and bathroom fixtures
- Designer porcelain wall and floor tiles
- ✓ Dual-flush, low-flow high performance toilet
- Extra-deep sleek soaker tub*
- Frameless glass shower stall*

✓ Green Features

* Selected Suites



DESTINATION – ENVIABLE

LOCATION IS EVERYTHING. IT NOT ONLY DEFINES YOUR LIFESTYLE, IT INSPIRES IT. AT YONGE AND EGLINTON, EVERYTHING IS WALKABLE, BUT IF YOU FEEL THE NEED TO HEAD DOWNTOWN OR ANYWHERE, THE EGLINTON TTC AND CROSSTOWN LRT STATIONS ARE JUST A SHORT WALK AWAY.



RESTAURANTS

CALLING ALL FOODIES

From wine bars, trendy nouveau cuisine, multicultural restos, gastro pubs, vegan-friendly fare, delightful cafés and decadent sweet treats – a global selection of diverse flavours await you here.



BAR BUCA



CIBO



GRAZIE RISTORANTE



CASS AVENUE



BYBLOS UPTOWN



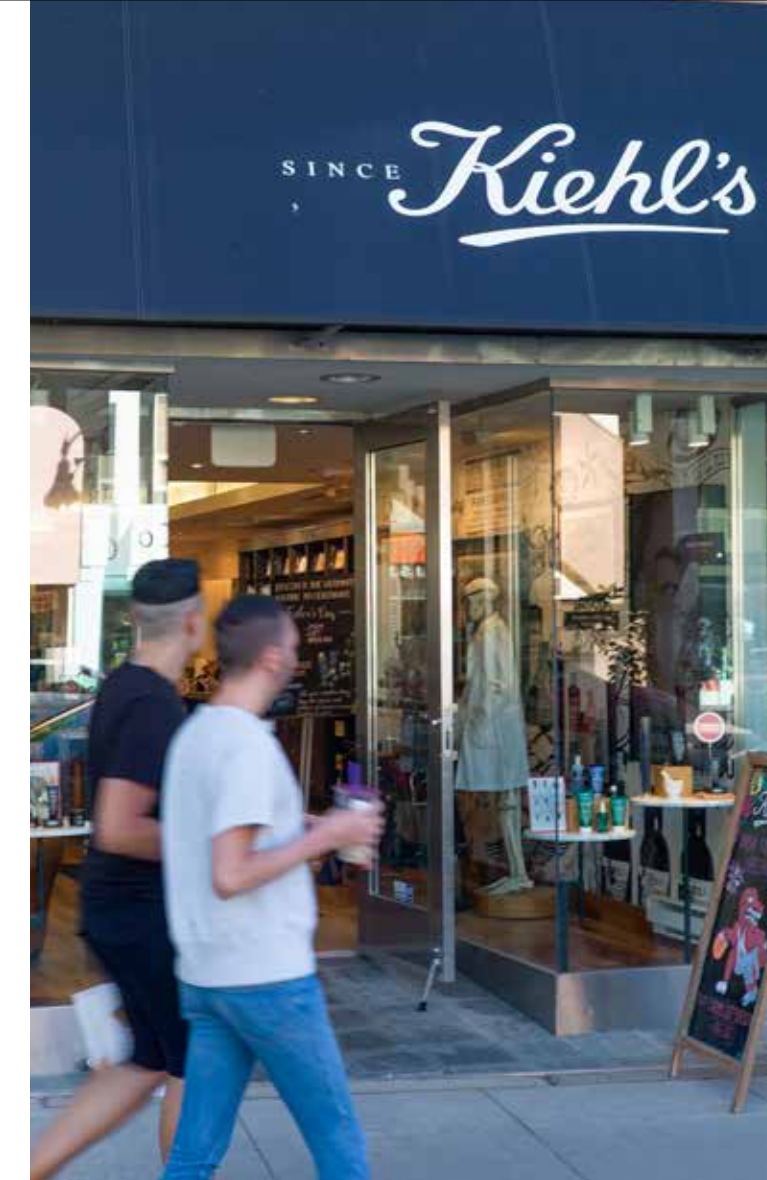
CLUB MONACO



SHOPPING

MUST-HAVE. MUST-SHOP.

From sporting goods, beauty brands, to pet necessities – a variety of shops meet every one of your shopping needs at Yonge & Eglinton.





ALEXANDER MUIR MEMORIAL GARDENS



PARKS AND TRAILS



SHERWOOD PARK WITH FENCED IN, OFF-LEASH DOG AREA



TRAVEL

- 1. Yonge & Eglinton TTC & Crosstown LRT Station

RESTAURANTS

- 2. Bar Buca
- 3. Byblos Uptown
- 4. Cass Avenue
- 5. CIBO
- 6. FRESH on Eglinton
- 7. Grazie
- 8. La Carnita
- 9. La Vecchia
- 10. SIP Wine Bar
- 11. The Keg
- 12. Sushi Rock
- 13. The Rose and Crown

SHOP, STROLL, REPEAT

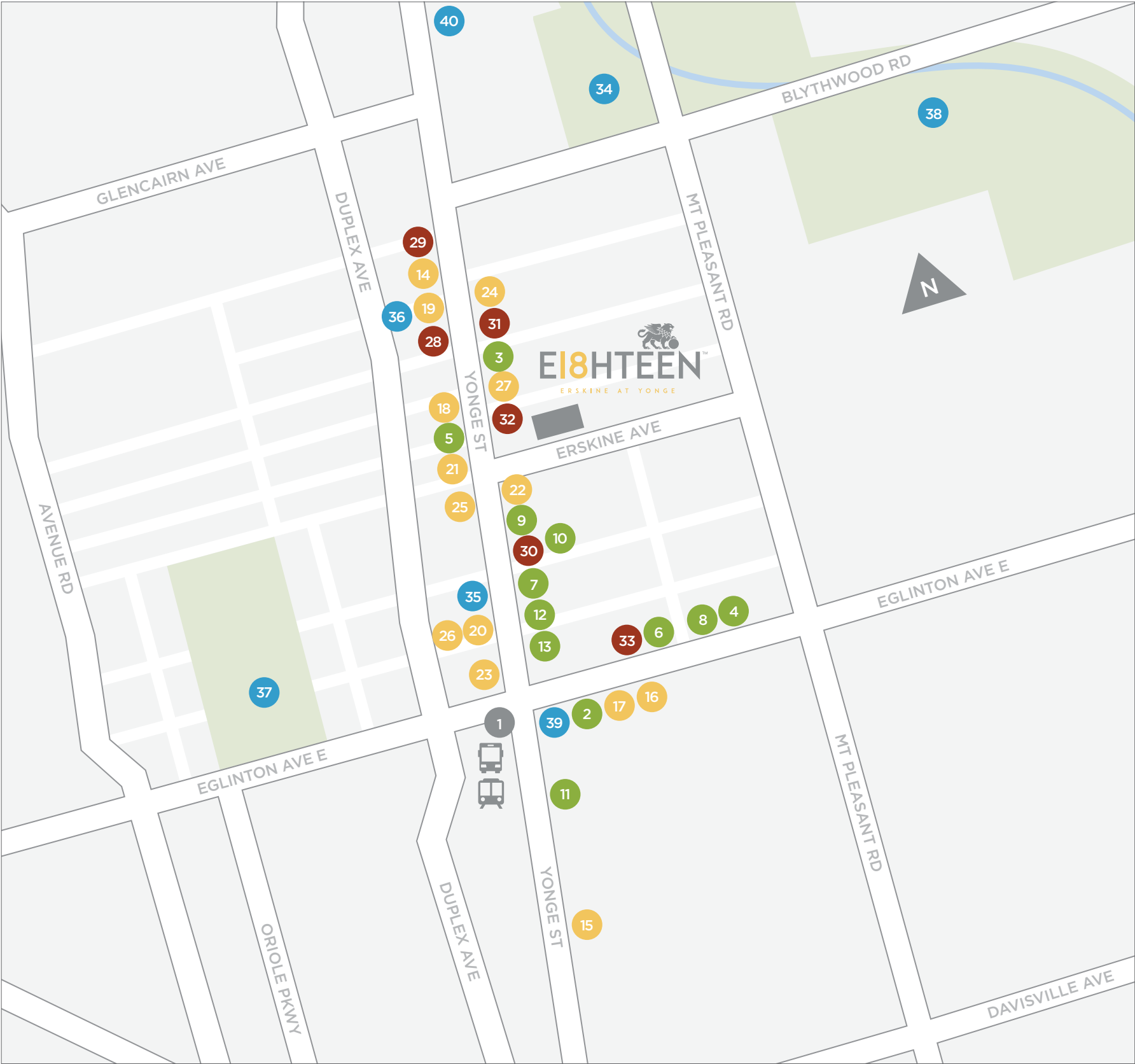
- 14. Club Monaco
- 15. Global Pet Foods
- 16. LCBO
- 17. Loblaws
- 18. Mendocino
- 19. Pet Valu
- 20. Sephora
- 21. Sporting Life
- 22. Starbucks
- 23. Yonge & Eglinton Centre
- 24. L'Occitane
- 25. West Elm
- 26. Urban Outfitters
- 27. Sport Chek

WELLNESS & FITNESS

- 28. Barreworks
- 29. Civello Uptown Salon
- 30. Noah's Natural Foods
- 31. Spinco
- 32. The Ten Spot
- 33. Yoga Tree

IT'S TIME TO PLAY

- 34. Blythwood Ravine Park
- 35. Cineplex VIP Cinemas
- 36. Cookery | Cooking Classes & Store
- 37. Eglinton Park
- 38. Sherwood Park with Off-Leash Dog Area
- 39. Snakes & Lattes
- 40. Alexander Muir Gardens





LIFE AT 18 ERSKINE

LIVING AT 18 ERSKINE IS REWARDED WITH AUTHENTIC WHITE GLOVE SERVICES THAT'S ALWAYS SINCERE.

ALL THE BENEFITS



SOCIAL

- Fireplace Lounge
- The Bar
- Seating Lounge
- Dining Lounge with Chef's Kitchen
- The Bistro
- Barbeque Terrace
- Kidz Zone
- CoWork Studio with Conference Room
- Zen Garden
- Pet Spaw
- Social community events
- Complimentary Netflix



FITNESS

- YOU! Fitness centre
- Steam & Change rooms
- Indoor pool
- Yoga/TRX Studio
- Stretching barre
- Complimentary fitness classes
- Live-stream Fitness-On-Demand
- KG app to track fitness equipment availability



WHITE GLOVE SERVICES

- 24-hour Concierge
- Onsite Resident Experience Manager
- Onsite property management staff
- Onsite maintenance staff
- 24-hour maintenance response
- Bike rack and storage with bike wash
- Security of tenure
- KG app to provide exclusive local business promotions for residents



SECURITY

- Onsite security to monitor and patrol premises
- Smart lock system for keyless suite access
- Indoor and outdoor CCTV cameras
- KG app to control and monitor guest access
- 24-hour monitored and gated underground parking garage



SUSTAINABILITY

- Onsite car wash using rain water
- Energy efficient LED lights throughout the building
- EV charging stations
- High performance thermal windows
- Tri-sorter refuse disposal
- Hazardous material disposal station
- Central heat recovery system
- Energy Management System to optimize building comfort and performance



CONVENIENCE

- Walking distance to Eglinton TTC and Crosstown LRT stations
- Steps to countless restaurants and shopping needs
- Onsite parcel lockers
- KG app for online payments, amenity reservations, maintenance requests, guest registrations and community event management
- Complimentary Wi-Fi throughout amenities
- KG app to provide easy access to lifestyle programs offered by local businesses such as dog walking, housekeeping and personal training
- Designated rideshare drop-off, pick-up area
- Visitor parking



WE LOVE PETS

YOUR FUR BABIES ARE FAMILY TOO! AT 18 ERSKINE, WE WELCOME PETS WITH OPEN ARMS AND ARE 100% PET FRIENDLY.

- PET FRIENDLY BUILDING
- DOG BISCUITS AT THE 24-HOUR CONCIERGE
- **PET SPAW** WITH PET WASH
- PET TREADMILL
- OUTDOOR SNOW-FREE PET RUN

30+3=18 OVER 30 AMENITIES + 3 MINUTES TO THE SUBWAY STATION = 18 ERSKINE



Some residents services may not be available in the initial phase of building occupancy.
Selected resident services are on a trial basis and subject to change without notice.
Specifications subject to change without notice. E. & O.E.



KG Group,
305 Roehampton Ave. Rental Office, Toronto M4P 0B2
Tel 416.487.3050 | Fax 416.487.7550