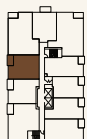


# C:NV NORTH

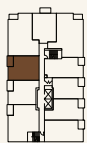
## PLAN B5

1 Bedroom, Den + 1 Bathroom

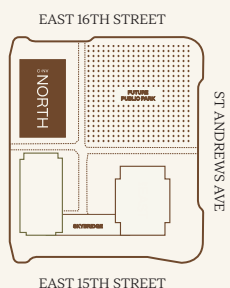
Interior:	621 sq ft
Exterior:	58 – 62 sq ft
Total:	679 – 683 sq ft



LEVEL 3-6




LEVEL 2



CENTURY:

245 E 16TH STREET, NORTH VANCOUVER

CENTURYNV.COM

A PROJECT BY  CRESSEY

Marketing collateral such as floor plans, material specifications, and site conditions are solely for illustrative purposes only and may vary from the completed development. Dimensions, sizes, specifications, layouts and materials are approximate only and subject to change without notice. E. &O.E.