

# C:NV NORTH

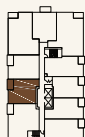
## PLAN B2

1 Bedroom + 1 Bathroom

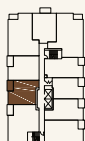
Interior: 576 sq ft

Exterior: 56 - 62 sq ft

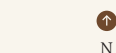
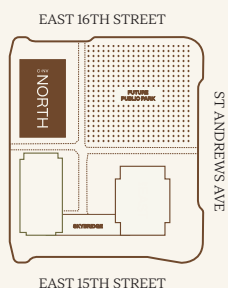
Total: 632 - 638 sq ft



LEVEL 3-6




LEVEL 2



CENTURY:

245 E 16TH STREET, NORTH VANCOUVER

CENTURYNV.COM

A PROJECT BY  CRESSEY

Marketing collateral such as floor plans, material specifications, and site conditions are solely for illustrative purposes only and may vary from the completed development. Dimensions, sizes, specifications, layouts and materials are approximate only and subject to change without notice. E. &O.E