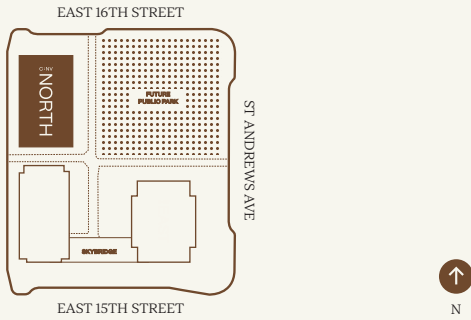
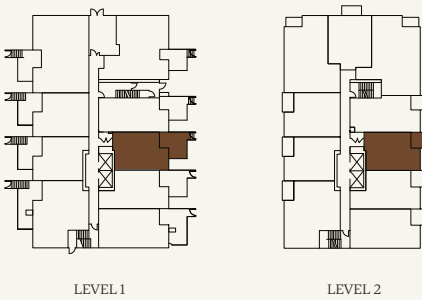


THE  
RESERVE  
COLLECTION  
C:NV

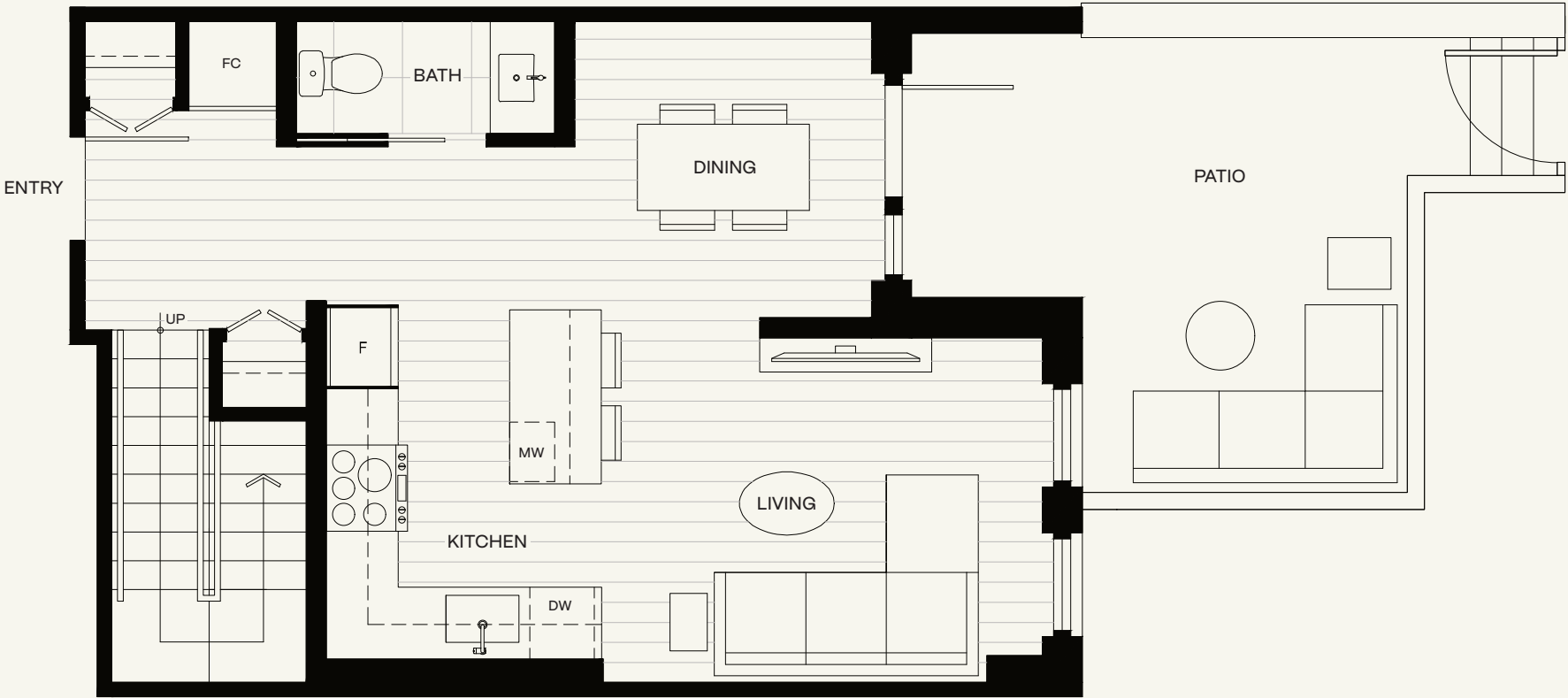
TOWNHOUSE 04

2 Bed + 2.5 Bath

Interior:	1,074 sq ft
Exterior:	169 sq ft
TOTAL:	1,243 sq ft



LEVEL 1



LEVEL 2



CENTURY:

245 E 16TH STREET, NORTH VANCOUVER

CENTURYNV.COM

A PROJECT BY  CRESSEY

Marketing collateral such as floor plans, material specifications, and site conditions are solely for illustrative purposes only and may vary from the completed development. Dimensions, sizes, specifications, layouts and materials are approximate only and subject to change without notice. E. &O.E