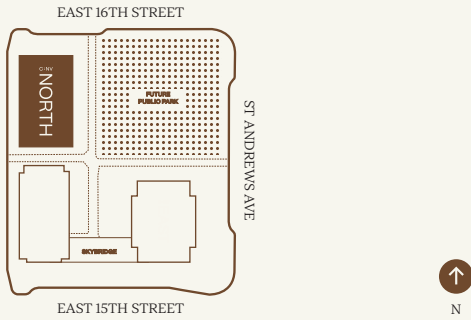


THE
RESERVE
COLLECTION
C:NV

TOWNHOUSE 02

3 Bed, Den + 2.5 Bath

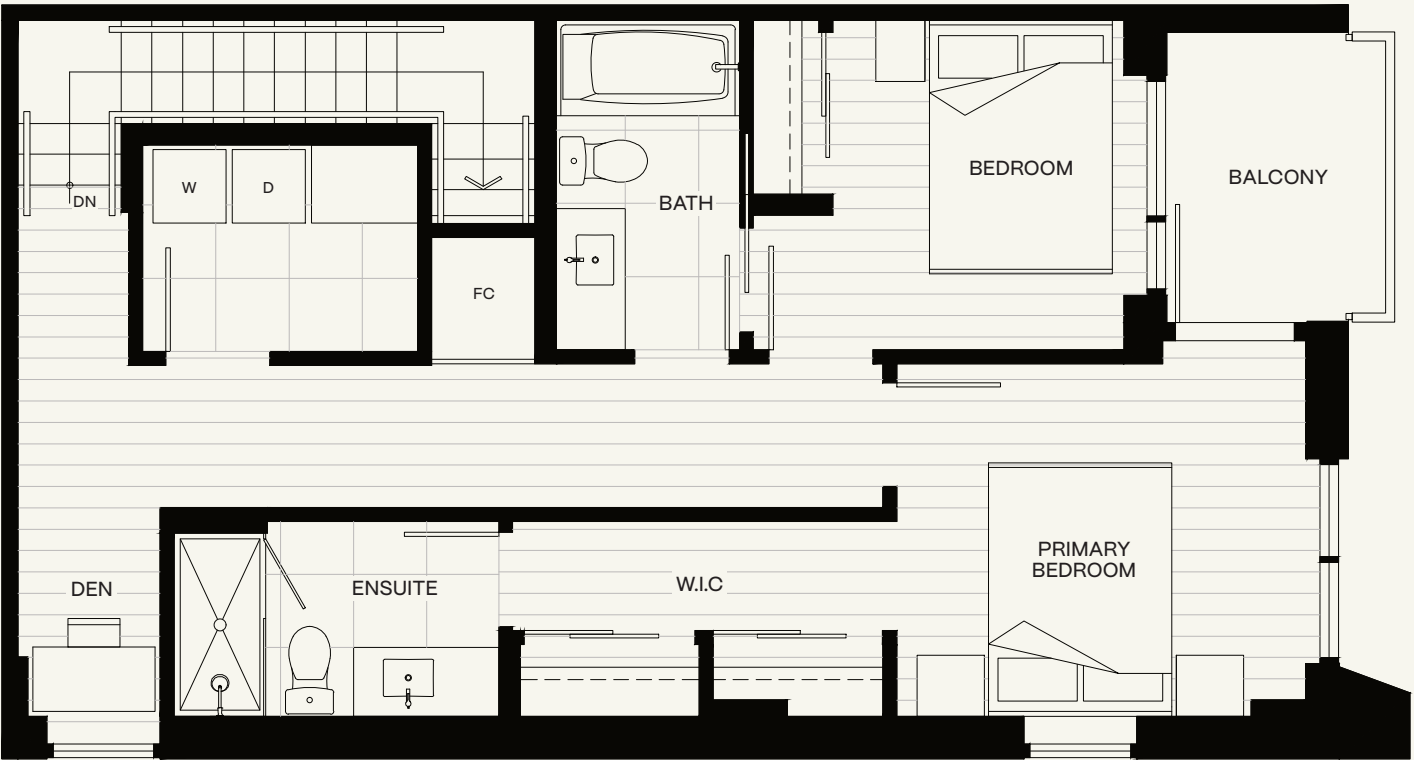
| | |
|-----------|-------------|
| Interior: | 1,420 sq ft |
| Exterior: | 242 sq ft |
| TOTAL: | 1,662 sq ft |



LEVEL 1



LEVEL 2



Marketing collateral such as floor plans, material specifications, and site conditions are solely for illustrative purposes only and may vary from the completed development. Dimensions, sizes, specifications, layouts and materials are approximate only and subject to change without notice. E. &O.E

CENTURY:

245 E 16TH STREET, NORTH VANCOUVER

CENTURYNV.COM

A PROJECT BY  CRESSEY