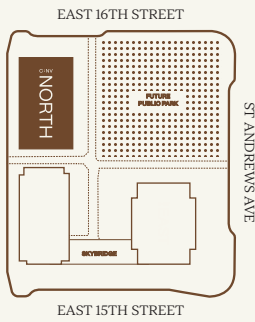
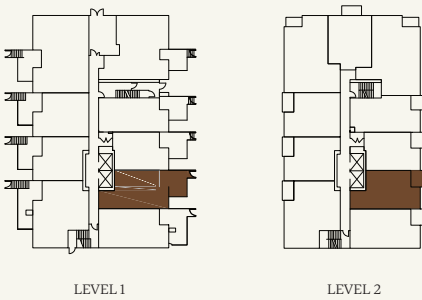


THE
RESERVE
COLLECTION
C:NV

TOWNHOUSE 01

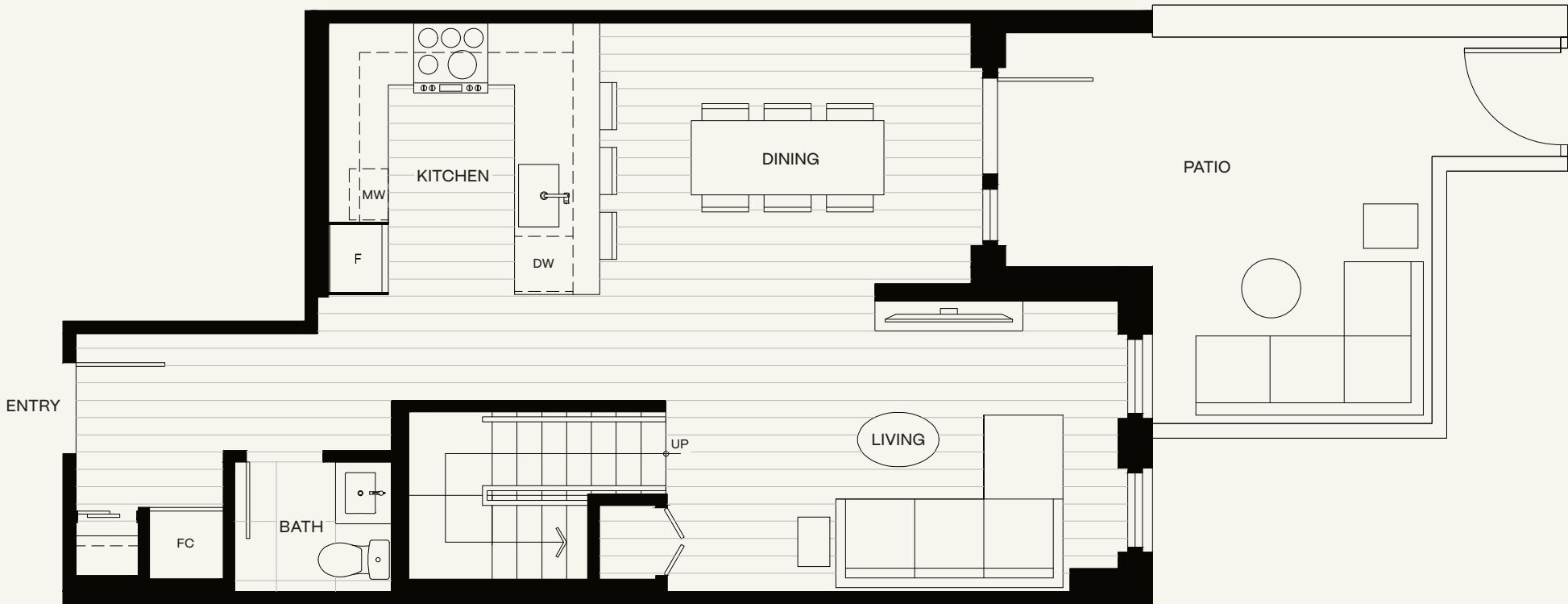
2 Bed + 2.5 Bath

Interior:	1,210 sq ft
Exterior:	184 sq ft
TOTAL:	1,394 sq ft

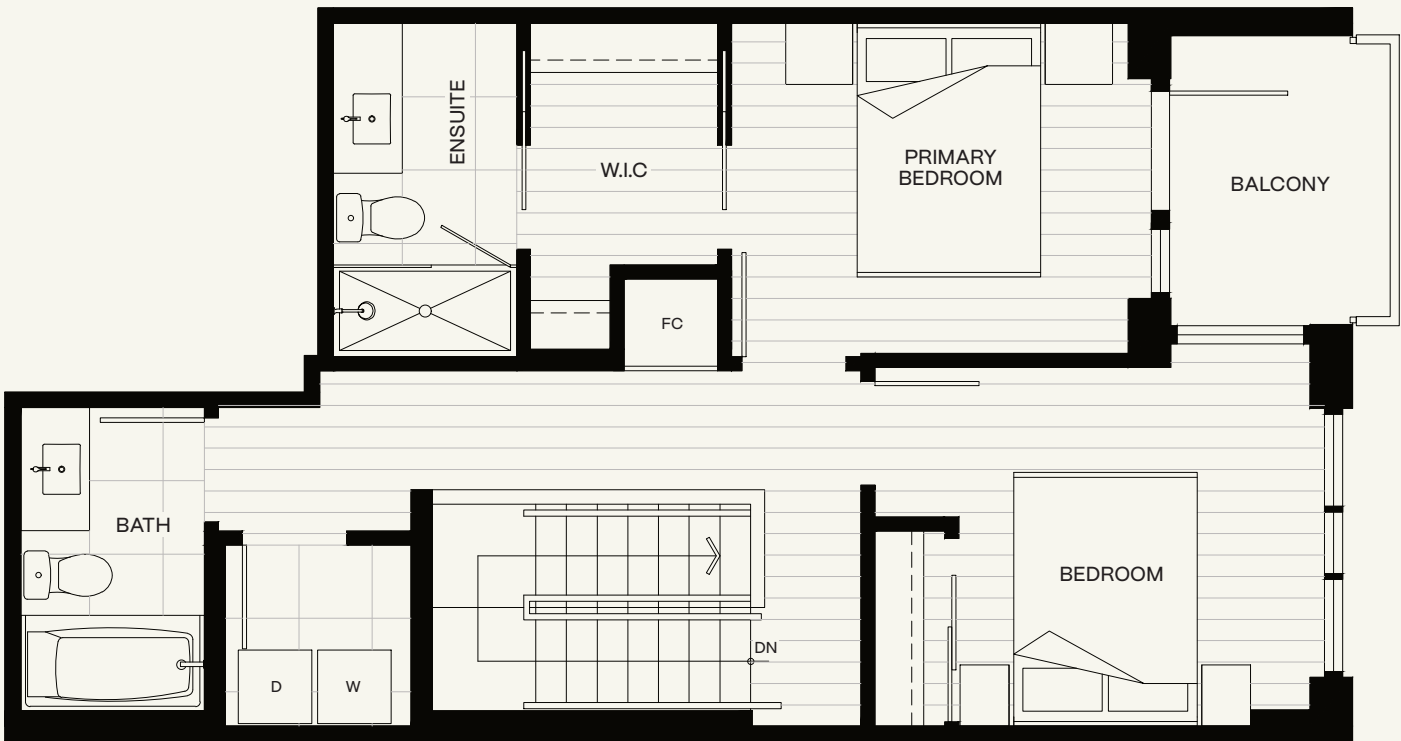


Marketing collateral such as floor plans, material specifications, and site conditions are solely for illustrative purposes only and may vary from the completed development. Dimensions, sizes, specifications, layouts and materials are approximate only and subject to change without notice. E. &O.E

LEVEL 1



LEVEL 2



CENTURY:

245 E 16TH STREET, NORTH VANCOUVER

CENTURYNV.COM

A PROJECT BY  CRESSEY