



**16509 SQUARE DRIVE
MARYSVILLE, OHIO 43040**

1,400 SF Office Space Available

FOR LEASE



- **1,400 SF Office Space Available.**
- **Breakroom, Hard Walled Office & Two (2) Restrooms, with one restroom ADA.**
- **Exposure & Frontage on Rt 33 at the Rt 36 Interchange.**
- **Zoned RMU: (Regional Mixed-Use / Manufacturing Overlay).**
- **Approximately 60 + off street parking spaces as currently configured.**
- **Complete Exterior Makeover in 2021 including roofs and parking lot.**

LEASE RATE: \$15.00 SF - Modified Gross

FOR MORE INFORMATION, PLEASE CONTACT:

Bill Hamilton

(614) 324-6715 - Office Direct

(614) 395-4098 - Cell

BHamilton@C1Realty.com

Dave Holzer

(614) 442-4449 - Office Direct

(614) 402-0601 - Cell

DHolzer@C1Realty.com

Commercial One Realtors

1515 Bethel Road

Columbus, Ohio 43220

614-451-5100

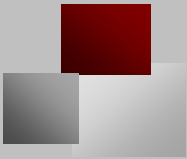
www.CommercialOneRealtors.com

No warranty or representation, express or implied, is made as to the accuracy of the information contained herein, and same is submitted subject to errors, omissions, change of price, rental or other conditions, withdrawal without notice, and to any special listing conditions, imposed by our principals.



Est. 1912

**Commercial
•ONE•
REALTORS**



16509 SQUARE DRIVE

MARYSVILLE, OHIO 43040

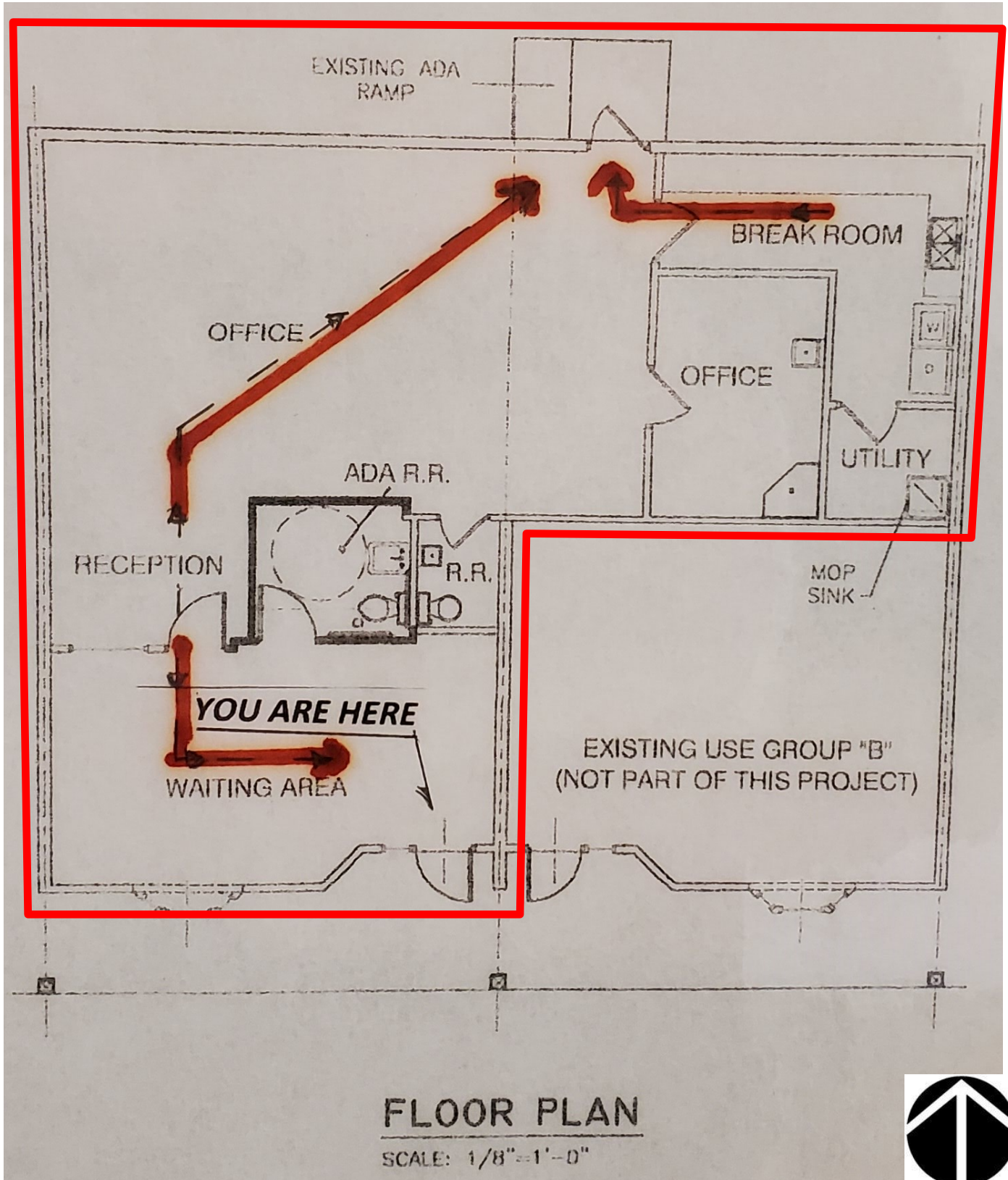
1,400 SF Office Space Available



16509 SQUARE DRIVE

MARYSVILLE, OHIO 43040

1,400 SF Office Space Available



16509 SQUARE DRIVE

MARYSVILLE, OHIO 43040

1,400 SF Office Space Available

