

FOR LEASE

Prime Retail
Corner Location

STETTLER CROSSROADS 4706 50 Street STETTLER, ALBERTA

avenueliving
asset management

**1,887 SQ. FT. REMAINING
AVAILABLE IMMEDIATELY**



PROPERTY HIGHLIGHTS

- Operating Costs (2019): \$8.70
- Join Sobeys Liquor and Pet Valu at the newest, most high profile retail destination in Stettler!
- Specialty services & retailers in Stettler draw from a trading area of over 100,000+ people
- Excellent high traffic location - NW Corner of 47 Avenue (HWY 12) and 50 Street (Main Street)
- Minimal retail leakage - Stettler is the economic hub of Central Alberta, providing all of the goods and services found in larger centres
- Stettler services a trading area of more than 40,000 people, which extends west to the Saskatchewan border, north to Camrose, and south to Drumheller

TRAVEL DISTANCES

City of Red Deer - 80 km
City of Camrose - 85 km
City of Drumheller - 96km
City of Edmonton - 190 km
Saskatchewan border - 205 km

CONTACT US

Slava Fedossenko, Commercial Asset Manager
780.224.4909 | sfedossenko@avenueliving.ca

avenueliving

400-4820 Richard Road SW
Calgary, AB T3E 6L1

P: 855.247.1492 F: 403.225.1981
avenuelivingam.com

FOR LEASE

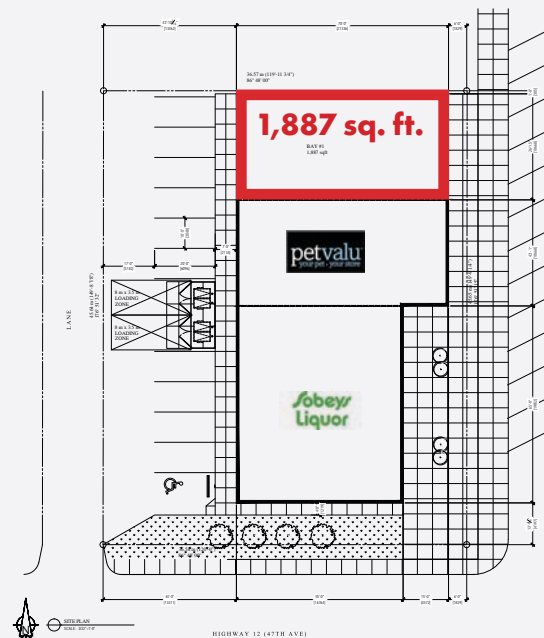
Prime Retail
Corner Location

STETTLER CROSSROADS 4706 50 Street STETTLER, ALBERTA

avenueliving
asset management



SITE LAYOUT



CONTACT US

Slava Fedossenko, Commercial Asset Manager
780.224.4909 | sfedossenko@avenueliving.ca

avenueliving

400-4820 Richard Road SW
Calgary, AB T3E 6L1
P: 855.247.1492 F: 403.225.1981
avenuelivingam.com