

206 - 3657 Roblin Blvd, Winnipeg  
Chapman Square



## LEASING OPPORTUNITY Office Space



A.S.H. Management Group Inc., Broker  
233 Portage Avenue, Suite 100,  
Winnipeg, MB R3B 2A7  
Ph: 204-982-7973  
[ashmanagementgroup.com](http://ashmanagementgroup.com)

Jack S. Hurtig, B.A., B. Admin, Broker  
Vice-President, Real Estate Brokerage  
Dir: 204-982-7978  
[jhurtig@ashmanagementgroup.com](mailto:jhurtig@ashmanagementgroup.com)

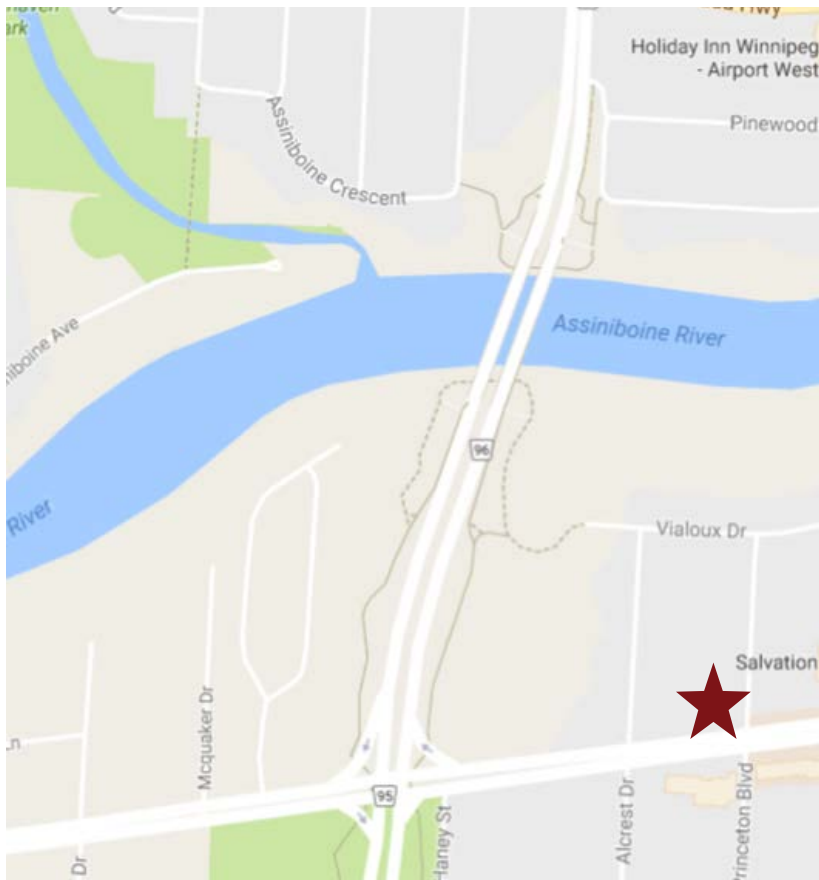
Tanya Spradbrow, Sales Representative  
Real Estate Brokerage Coordinator  
Dir: 204-982-7979  
[tspradbrow@ashmanagementgroup.com](mailto:tspradbrow@ashmanagementgroup.com)

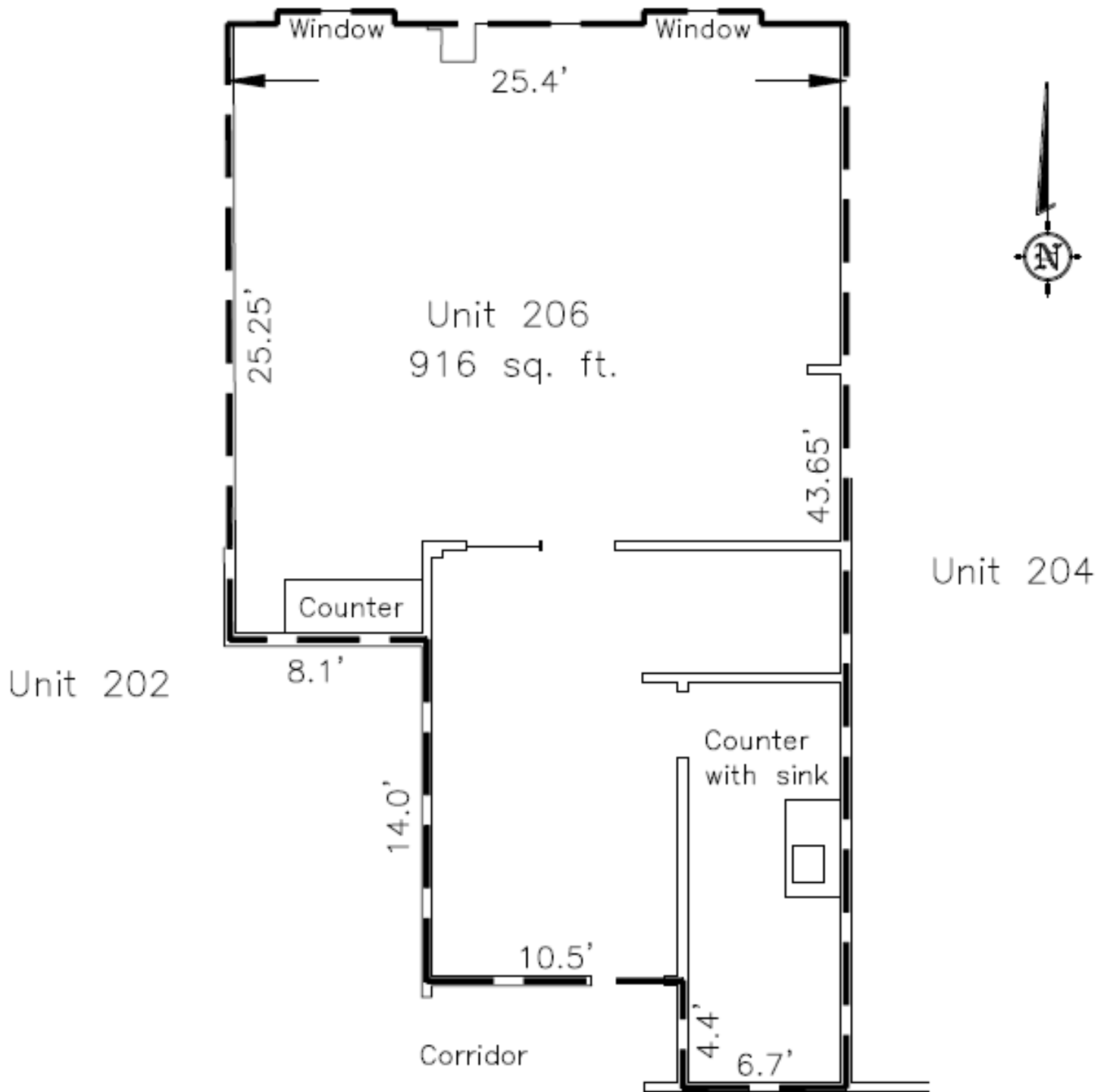
# ASH

A.S.H. MANAGEMENT GROUP INC.  
BROKER

December 2020

Address	Available Space (sf ±)	Base Rental Rate (psf per annum)	Additional Rent (psf per annum 2021 est)
Unit 206 3657 Roblin Blvd.	916	\$9.95	\$10.57 <sup>1,2</sup>
<ul style="list-style-type: none"> <li>• Developed office space. in move-in condition</li> <li>• Located two (2) blocks from William R. Clement Parkway (Moray Street Bridge) in the heart of Charleswood.</li> <li>• Multi-tenant, mixed use 2-storey office/retail building.</li> <li>• On-site surface parking.</li> <li>• Available on short notice.</li> </ul>		<ul style="list-style-type: none"> <li>• <sup>1</sup> Plus 5% Management Fee on Base and Additional Rent</li> <li>• <sup>2</sup> Includes all utilities</li> <li>• <a href="#">Click here for more details</a></li> <li>• E &amp; OE</li> </ul>	





May not be exactly as shown, for information purposes only.

