



Project new construction single family house, Chalet José



Content

About the Municipality	4
Property description	5
Map	6
Situation Plan	7
Property Details	8
Room layout	9
Basement	11
Ground Floor	12
Upper Floor	13
Top Floor	14
Impressions	15

The visualisations shown in this sales documentation are used to show impressions and visualisation of possible options and are not part of the contract terms!

Copyright: 2020©nk immobilien Gstaad GmbH. All rights reserved. Applies to the whole documentation!

About the Municipality



SAANEN, 1'014 ABOVE SEA LEVEL

Together with the municipalities of Gsteig and Lauenen, the municipality of Saanen forms the Saanenland in the Bernese Oberland. The municipality of Saanen includes the capital Saanen and the world-famous resort Gstaad.

Population: approx. 7'469 inhabitants

Arrival

By car: On the motorway from Basel, Geneva or Zurich via Berne to Spiez, from here on the main road through the Simmental to Saanen.
Rail: An extensive network of public transport links Gstaad both internally and externally. The main means of transport are the "MOB" railway (Montreux-Oberland Bernois) and numerous post bus lines.
Airport: Bern 70 km, Zurich 200 km, Basel 180 km, Geneva 155 km. Zurich and Geneva with direct train connection from the airport railway station. Air-taxi connections to many national and international destinations are maintained from and to Saanen airport.

Income tax

Municipal tax rate: 1.3
Cantonal tax rate: 3.06

Property tax

Tax rate 1.5‰ of official value.

School / Kindergarten

Kindergarten and primary school are in Saanen, high school and vocational college in Gstaad.

Medical care

Doctors and pharmacy in town. The nearest hospital is in Zweisimmen, about 13 km away.



Property description

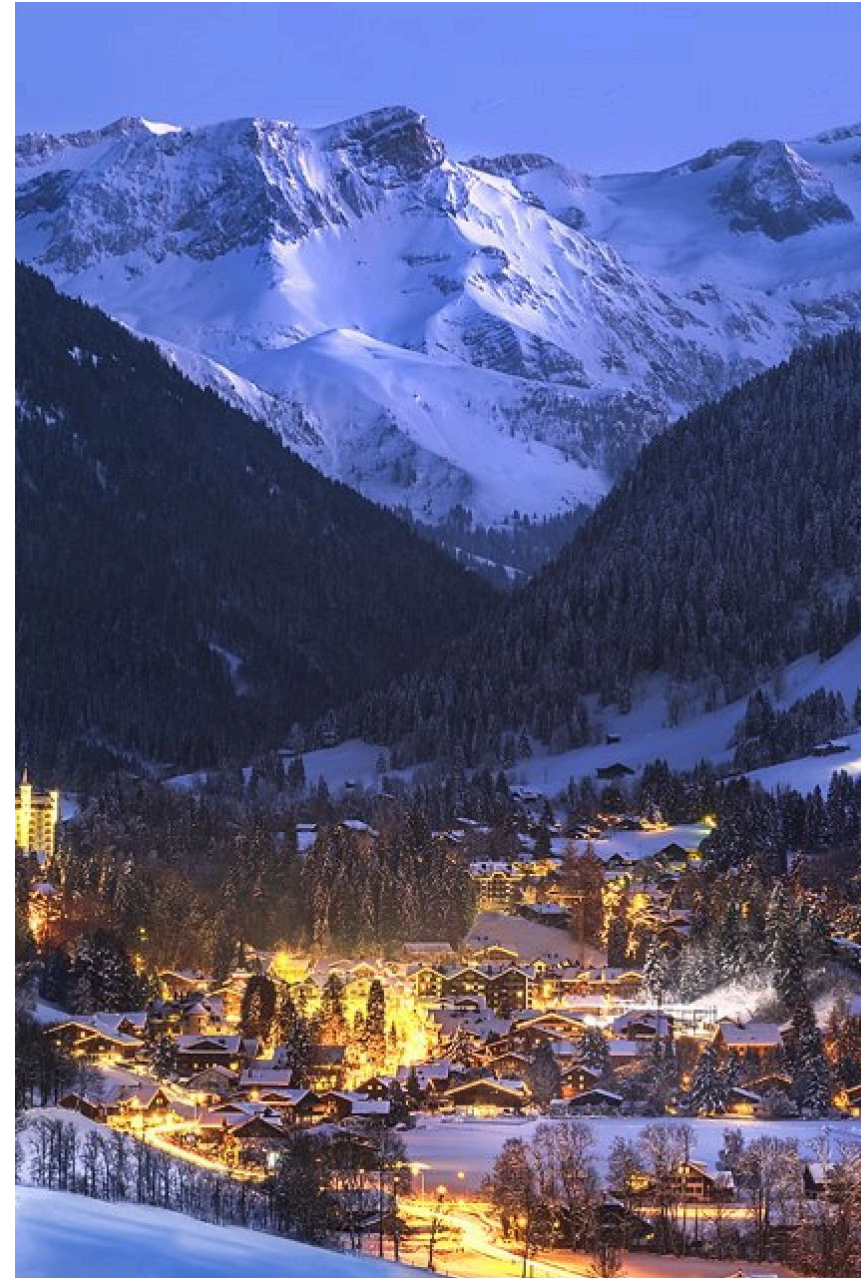
PROPERTY DESCRIPTION

The plot of the planned new construction single-family house Chalet José is located at Birkenweg 6, in Gstaad. The project of the spacious chalet includes the following assets:

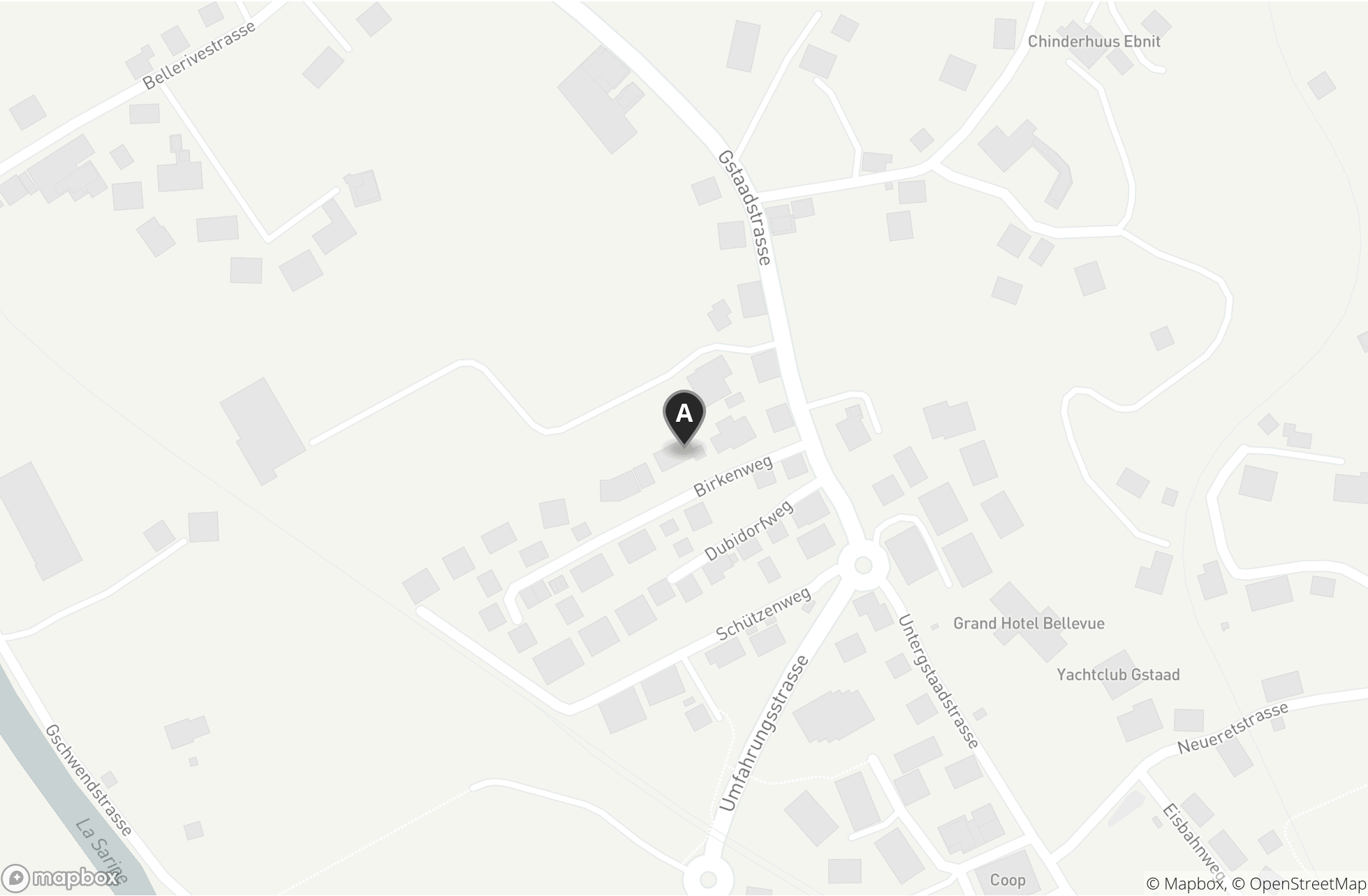
- 3 bedrooms with en-suite bathrooms on the ground floor
- Large master bathroom with shower and bathtub on the top floor
- Master bedroom with direct access to the dressing room on the top floor
- Separate toilets on the upper floor and the top floor
- Fitness room in the basement with bathrooms and dressing rooms
- Generous balconies on the upper and top floor
- Covered outdoor area/terrace
- Elevator available

LOCATION

The plot of the planned new single-family house, GBB-Nr. 4111, is located at Birkenweg 6, in 3780 Gstaad. The village of Gstaad belongs to the municipality of 3792 Saanen. The train station of Gstaad can be reached in only 7 minutes on foot. In the immediate vicinity of the station is the village center with various shopping facilities and restaurants. The valley station of the "Bergbahnen Destination Gstaad AG" is about 2 kilometers away from the plot.



Map



Situation Plan



Property Details

MAIN INFORMATION

Reference no.	040
Utilities	Residential, Vacation
Property type	Single house
Bathrooms	6
Number of guest toilets	2
Number of residential units	1
Floors	3
Available from	On Request
Zone type	Wohnzone, 3 Geschosse
Plot no.	4111

AREAS

Land area	1'003 m²
Balcony space	94 m²
Terrace space	64 m²

FINANCE

Sales price	CHF 14'900'000.–
-------------	------------------

INTEGRATED OFFERS

4 x Underground parking garage	CHF 100'000.– (Inclusive)
--------------------------------	---------------------------

PROPERTY FEATURES

- ✓ Balcony

✓ Child friendly

✓ Garage
- ✓ Has elevator

✓ Parking

Room layout

Basement

-Entrance

-Garderobe

-Car parking hall

-Bike room

-Ski room

-Equipment room

-Technical rooms

-Cellar 1 and 2

-Corridor

-Fitness room

-Laundry room

-2 rooms/garderobes with bathroom

Ground Floor

-Entrance area

-Staircase/elevator

-Corridor

-Garderobe

-2 bathrooms with shower and toilet (en suite)

-1 bathroom with shower, bathtub and toilet (en suite)

-3 bedrooms with en suite bathroom

-Outdoor area/terrace

First Floor

-Staircase/elevator

-Storage room

-Living room

-Dining room

-Kitchen

-Separate toilet

-Balcony

Top Floor

-Staircase/elevator

-Master bathroom with shower and bathtub

-Courtyard

-Separate toilet

-Dressing room

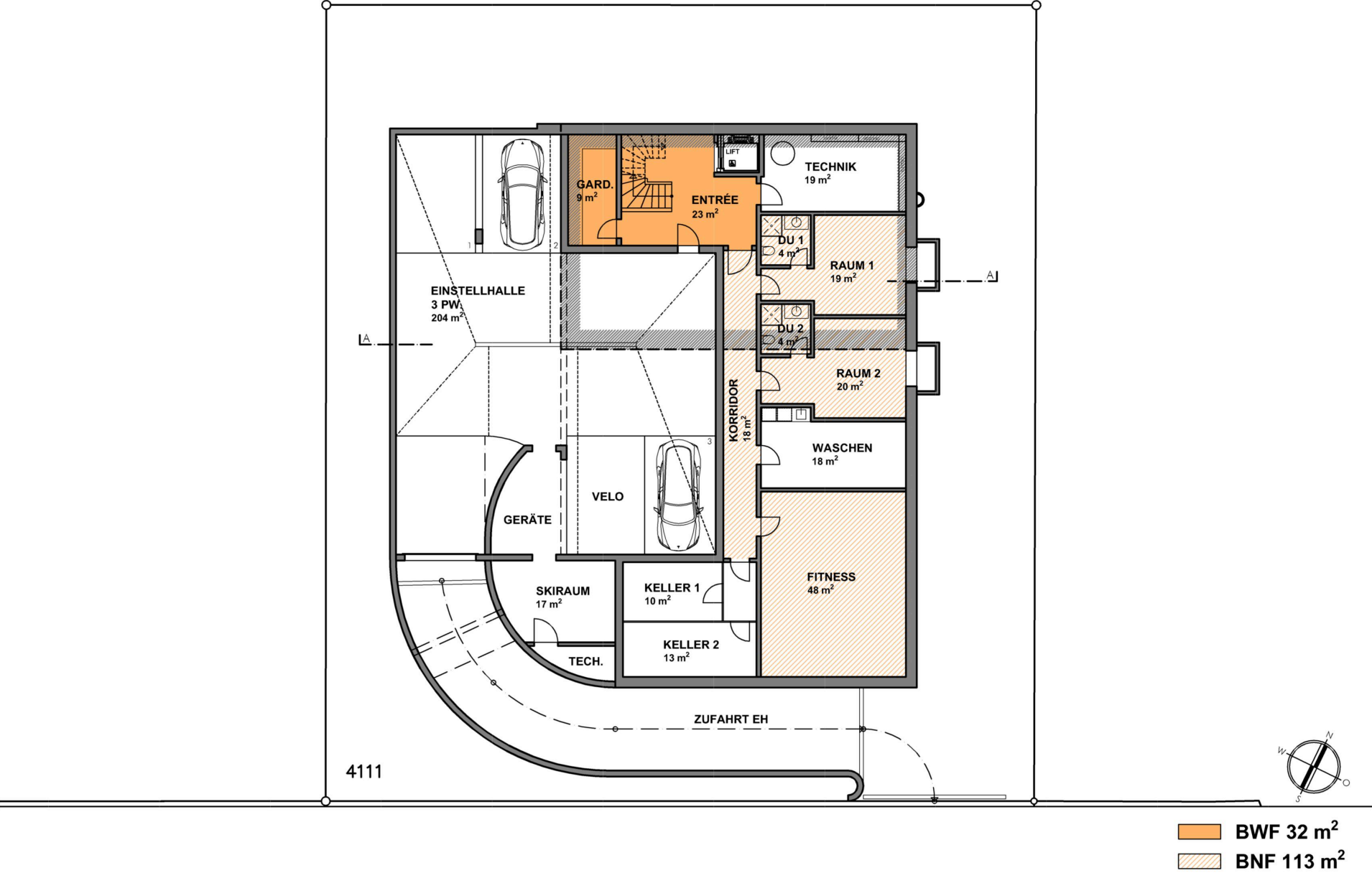
-Master bedroom

-2 air spaces

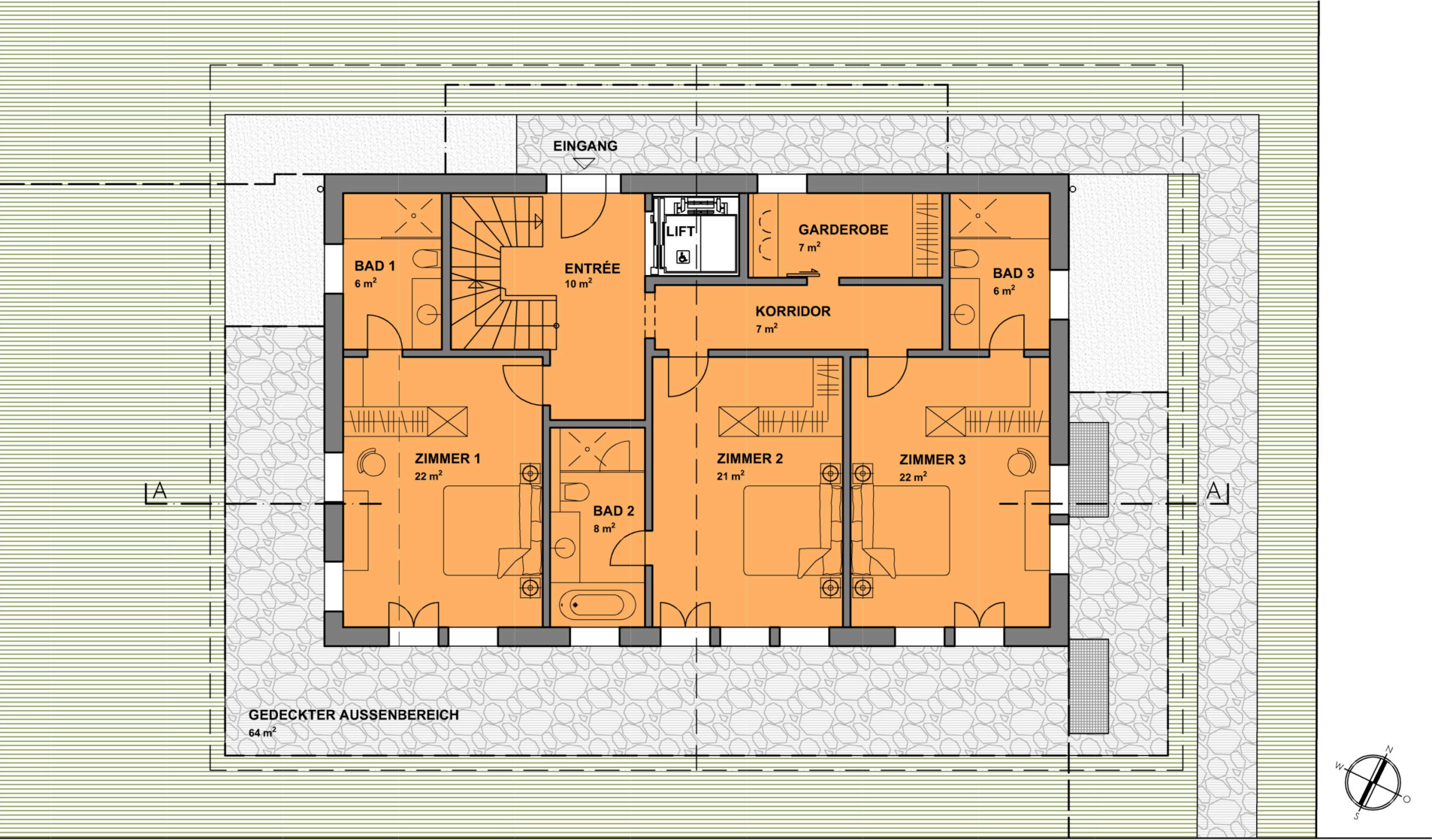
-Screed

-Balcony

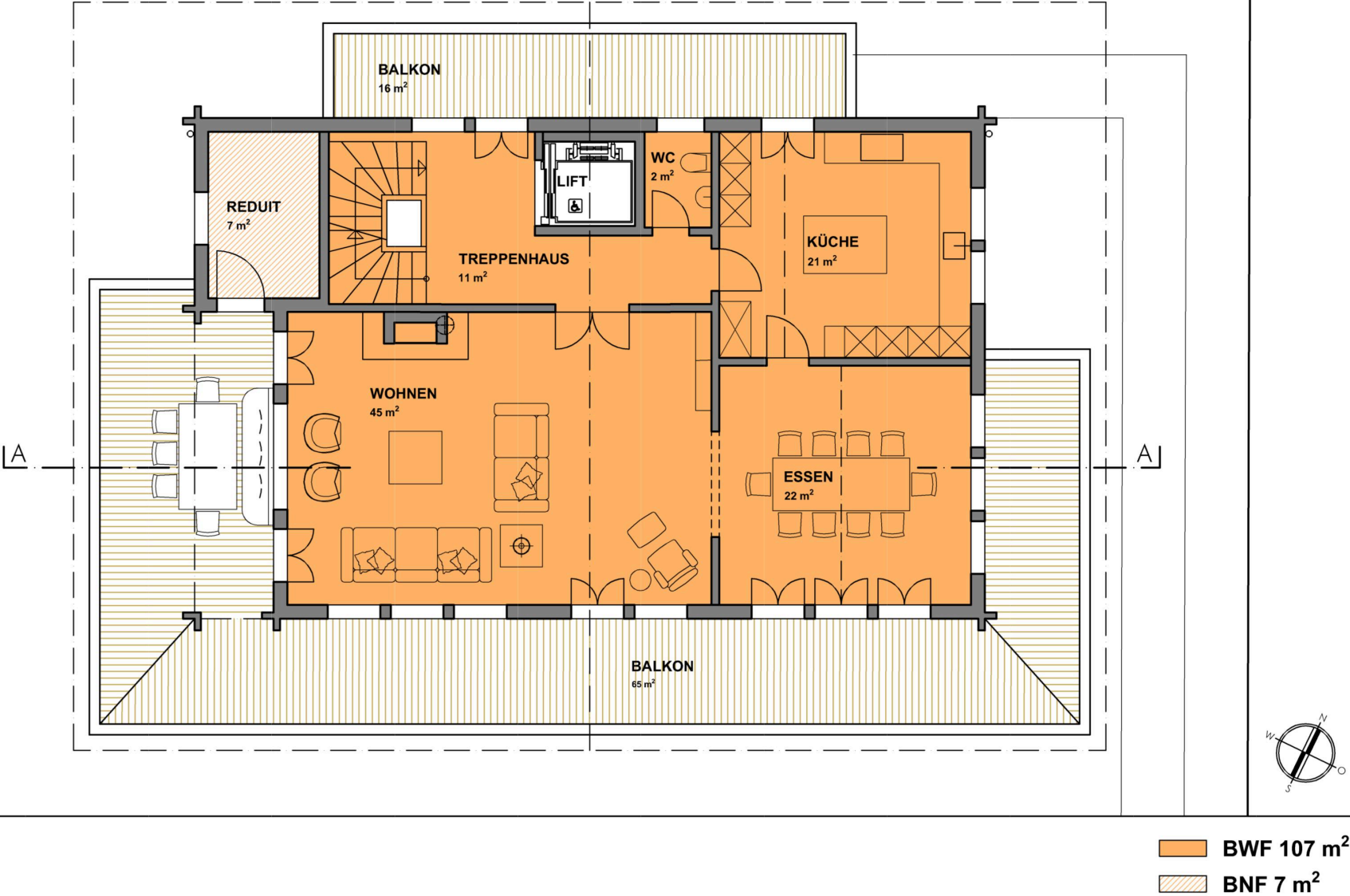
Basement



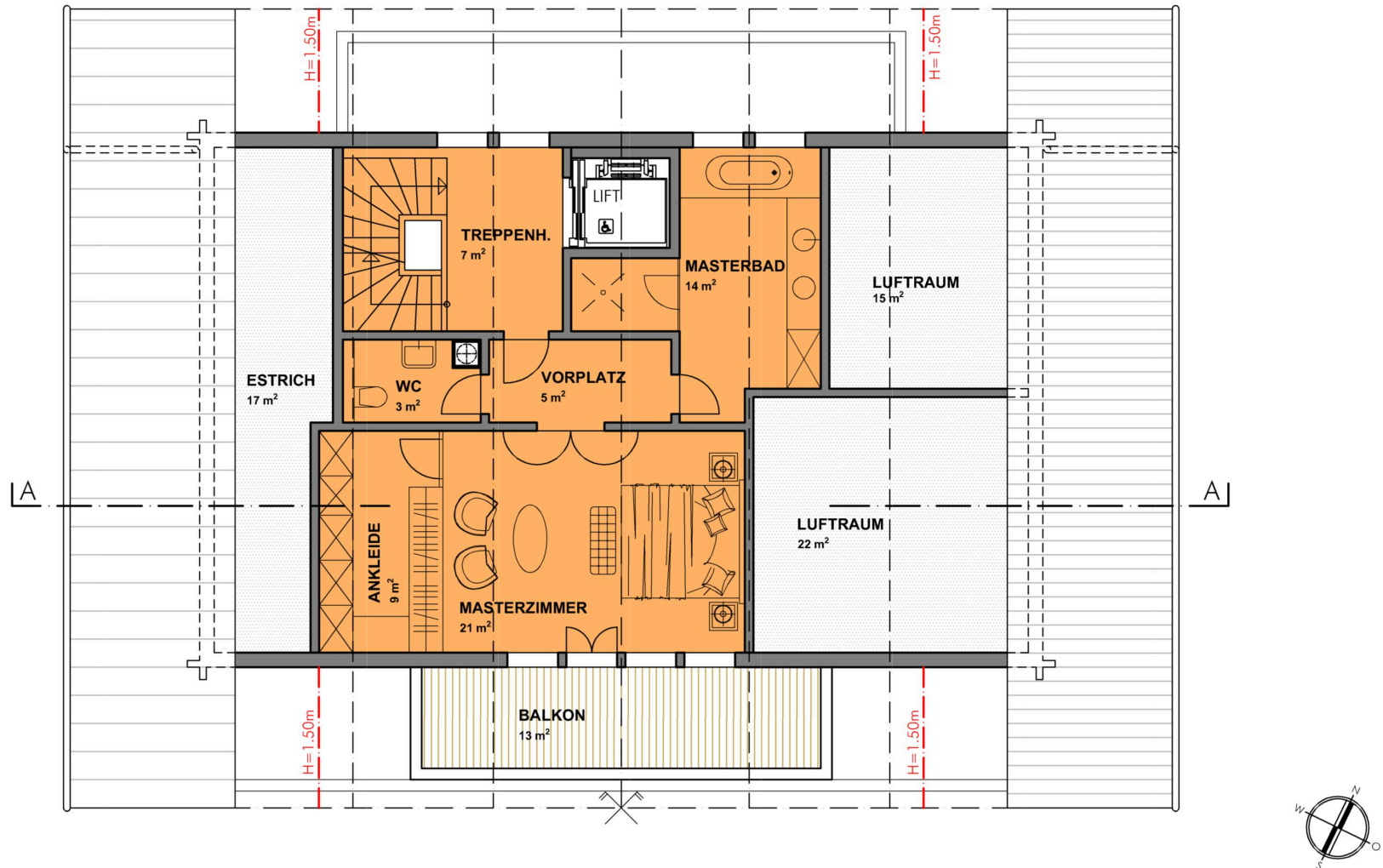
Ground Floor



Upper Floor



Top Floor



 BWF 65 m²

Impressions





Dreams come true...