

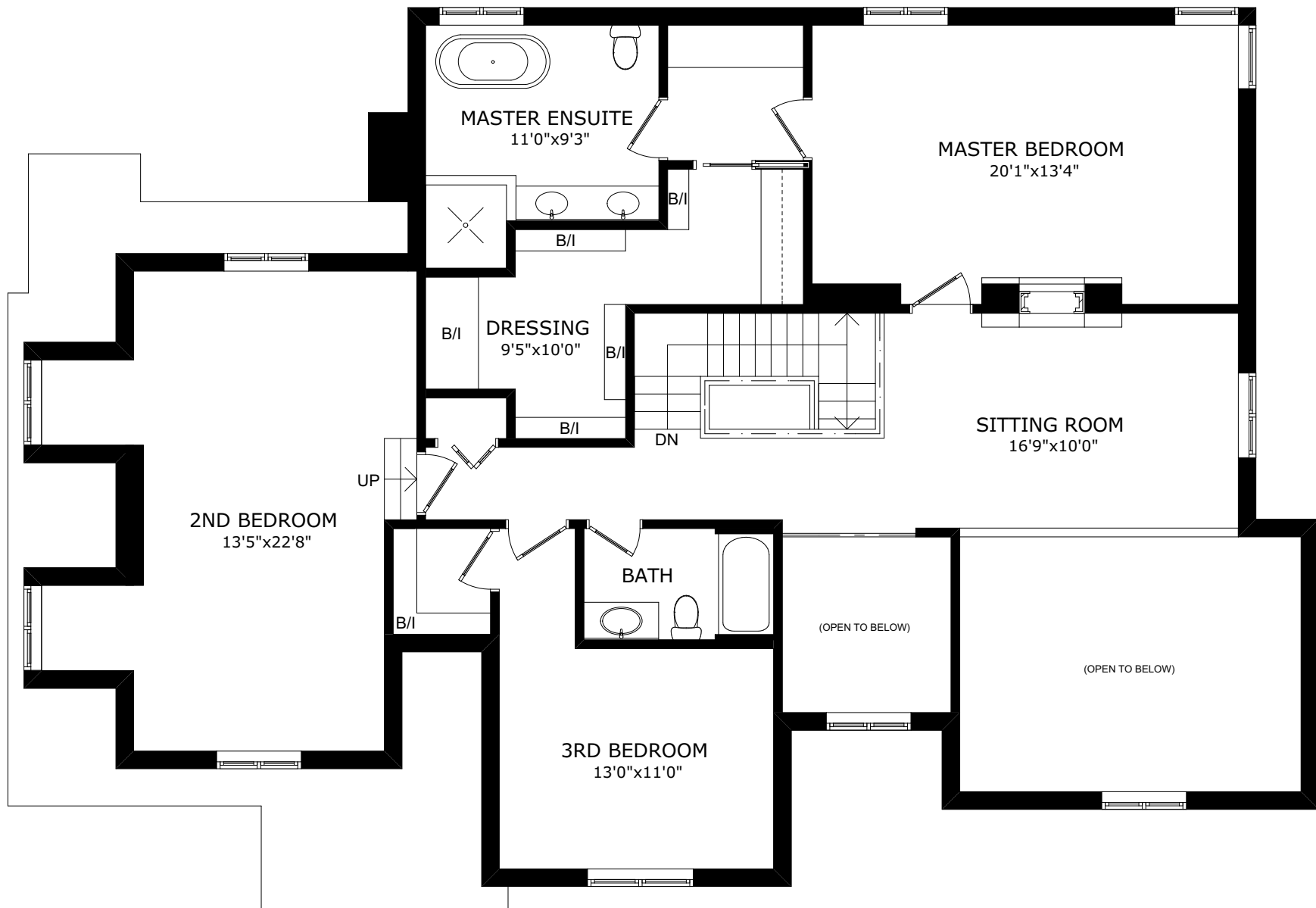
The floor plan shows a house with the following rooms and features:

- Garage:** 22'0" x 27'5"
- Office:** 13'0" x 11'1"
- Foyer:** 7'3" x 8'3"
- Living:** 16'1" x 12'0"
- Dining:** 12'1" x 11'3"
- Kitchen:** 12'1" x 12'6"
- Breakfast:** 11'0" x 13'2"
- Family Room:** 17'9" x 13'2"
- Laundry:** 6'0" x 11'9"
- Deck:** 18'1" x 17'8"

Other features include a **PWD** (Powder Room) and a **Front Porch**. Stairs are labeled **UP** and **DN**, and doors are labeled **B/I** (Back/In).

SIZE AND LAYOUT ARE APPROXIMATE,
BUYER TO VERIFY SIZES.
WWW.HOUSSMAX.CA

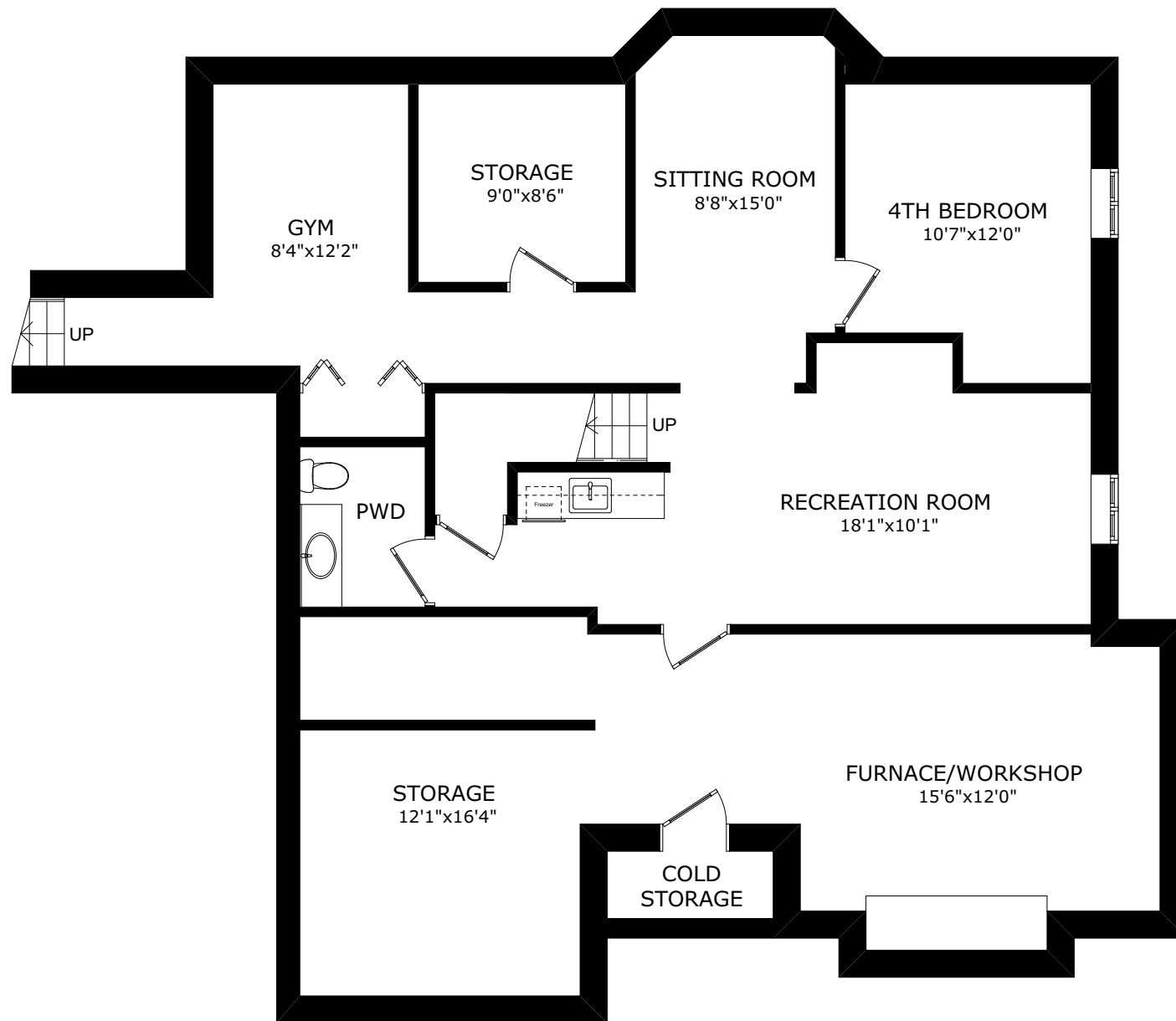
16 PALOMINO DRIVE



SECOND FLOOR

SIZE AND LAYOUT ARE APPROXIMATE,
BUYER TO VERIFY SIZES.
WWW.HOUSSMAX.CA

16 PALOMINO DRIVE



LOWER FLOOR

SIZE AND LAYOUT ARE APPROXIMATE,
BUYER TO VERIFY SIZES.
WWW.HOUSSMAX.CA