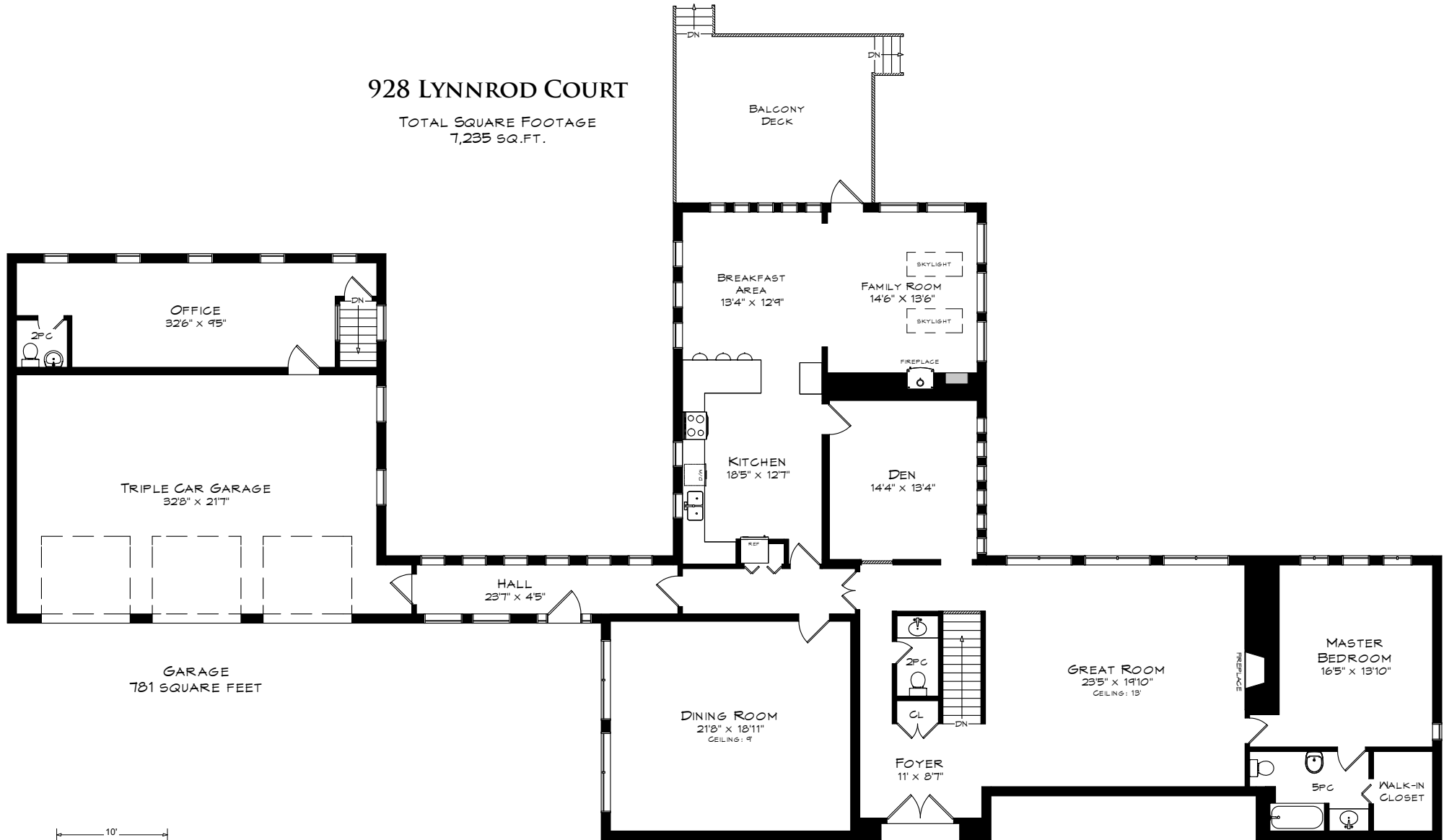
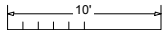


# 928 LYNNROD COURT

TOTAL SQUARE FOOTAGE  
7,235 SQ.FT.



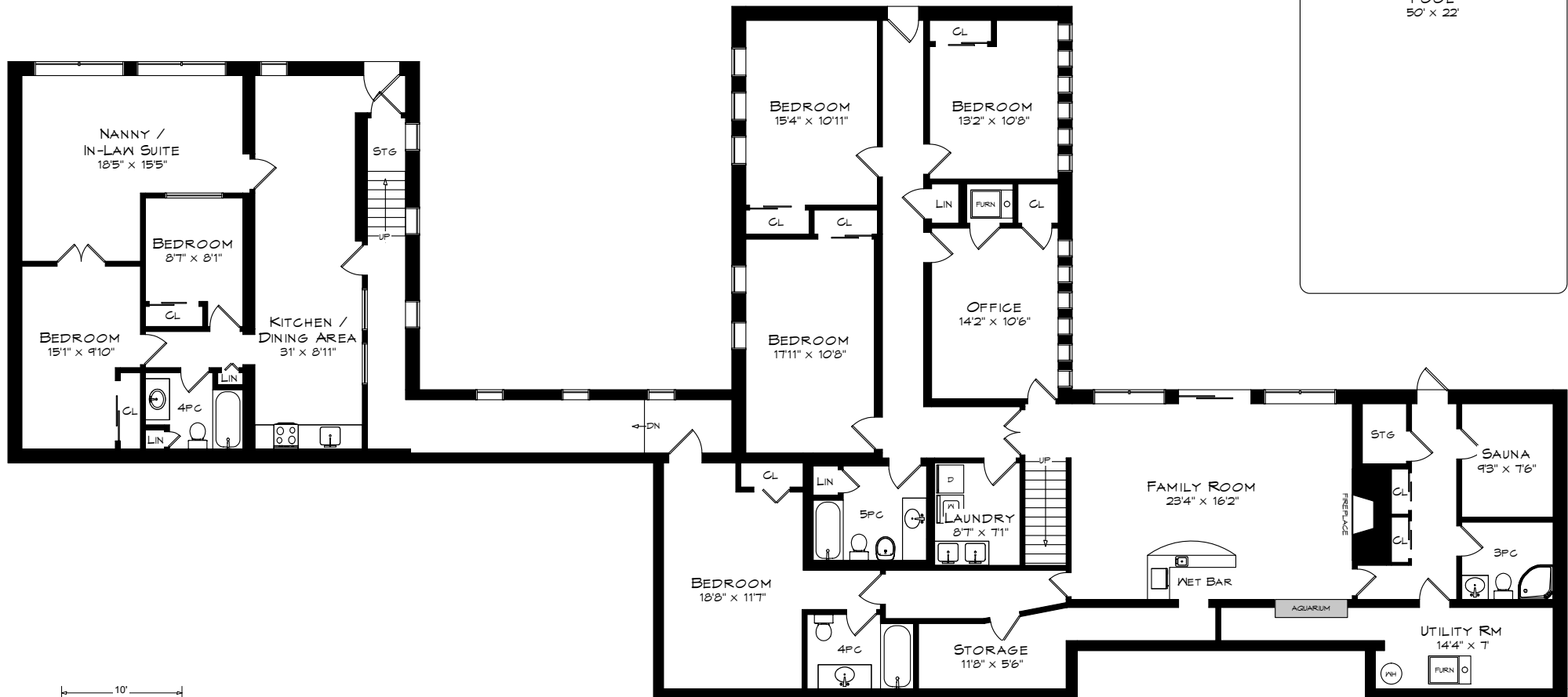
MAIN LEVEL  
3,223 SQUARE FEET



Note: Measurements may not be 100% accurate  
and should be used as a guideline only. E&OE  
August - 2014

**DGR**  
905-808-0241  
info@dgrplan.ca

# 928 LYNNROD COURT



GROUND LEVEL  
4,011 SQUARE FEET

Note: Measurements may not be 100% accurate  
and should be used as a guideline only. E&OE  
August - 2014

905-808-0241  
info@dgrplan.ca