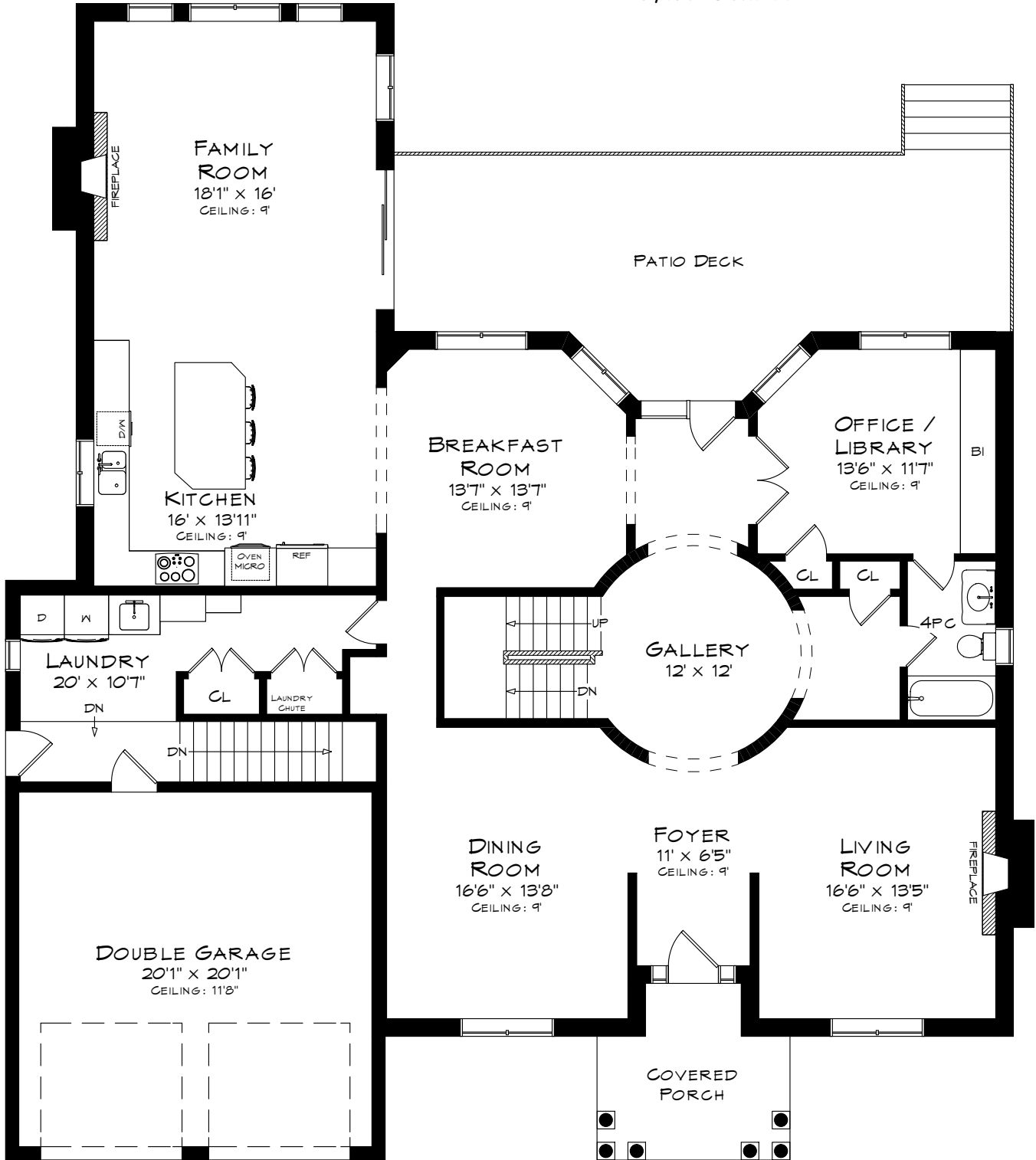


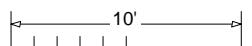
## 1051 SHELTERED OAK COURT

TOTAL SQUARE FOOTAGE  
6,752 SQ.FT.



GARAGE  
449 SQUARE FEET

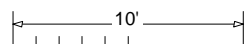
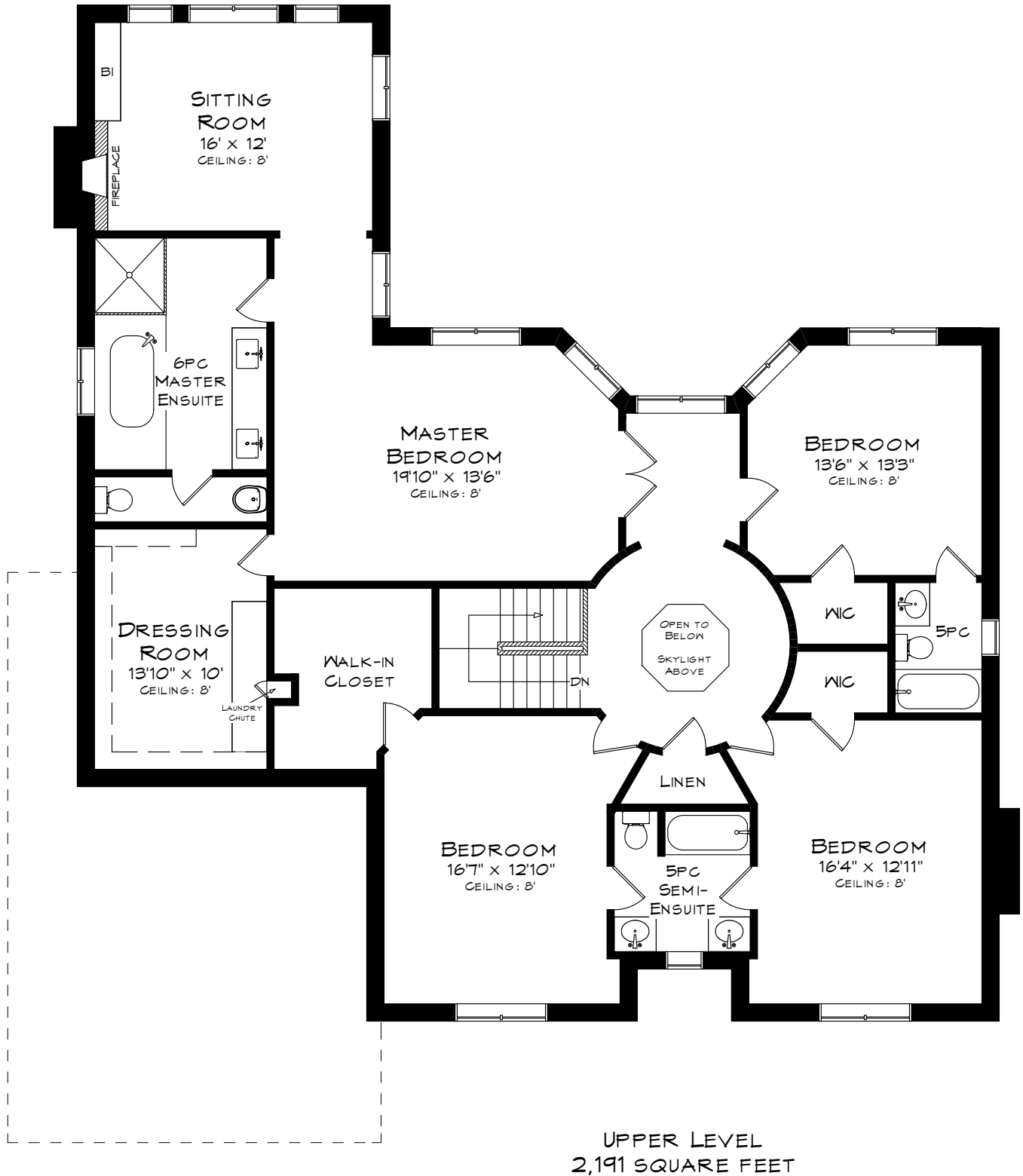
MAIN LEVEL  
2,219 SQUARE FEET



Note: Measurements may not be 100% accurate  
and should be used as a guideline only. E&OE  
November - 2013

**DGR** 905-808-0241  
info@dgrplan.ca

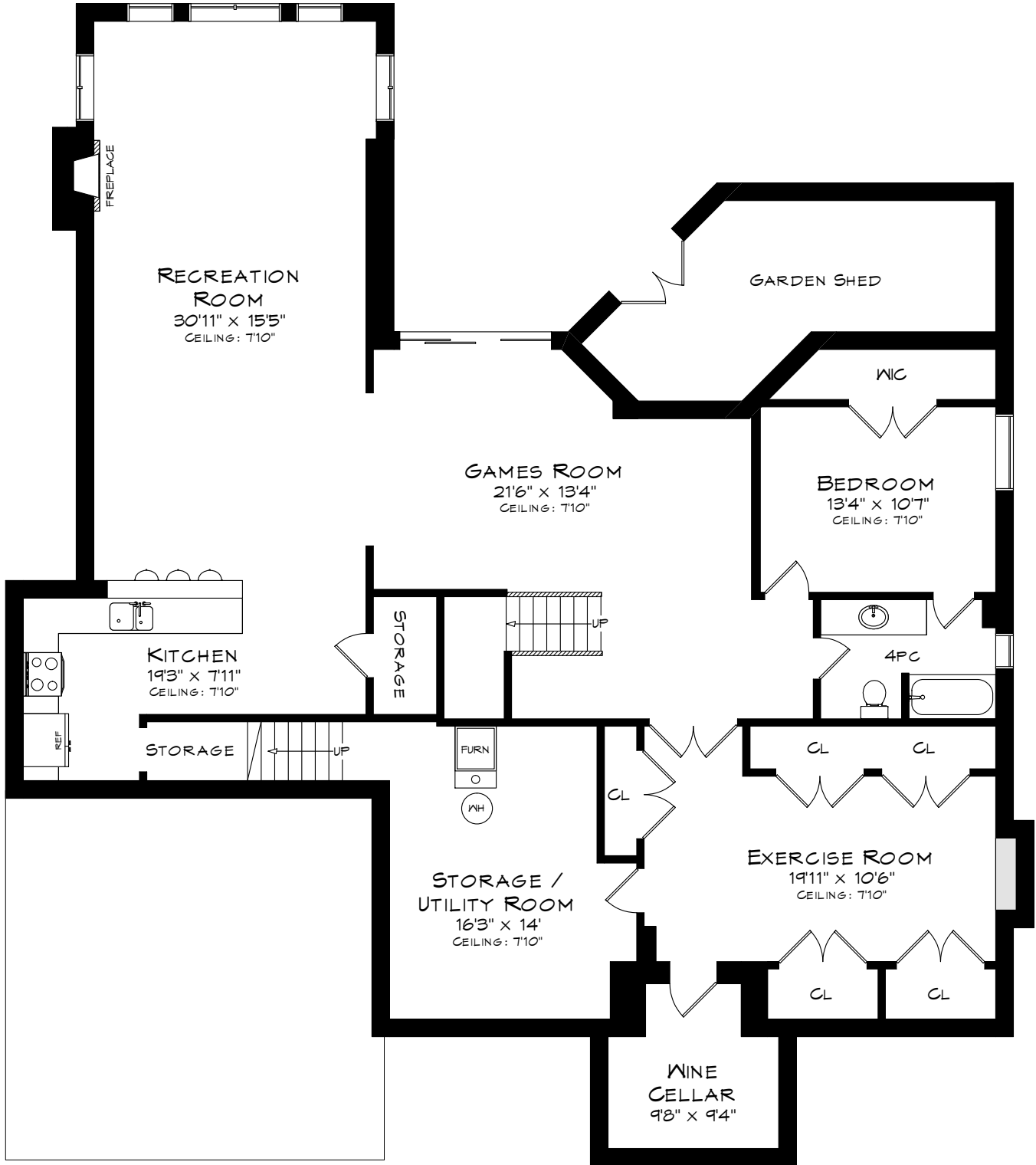
# 1051 SHELTERED OAK COURT



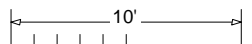
Note: Measurements may not be 100% accurate  
and should be used as a guideline only. E&OE  
November - 2013

**DGR** 905-808-0241  
info@dgrplan.ca

# 1051 SHELTERED OAK COURT



LOWER LEVEL  
2,342 SQUARE FEET



Note: Measurements may not be 100% accurate  
and should be used as a guideline only. E&OE  
November - 2013

**DGR** 905-808-0241  
info@dgrplan.ca