

PROJECT AREAS

11MO1058

11MO1059

11MO845

11MO846



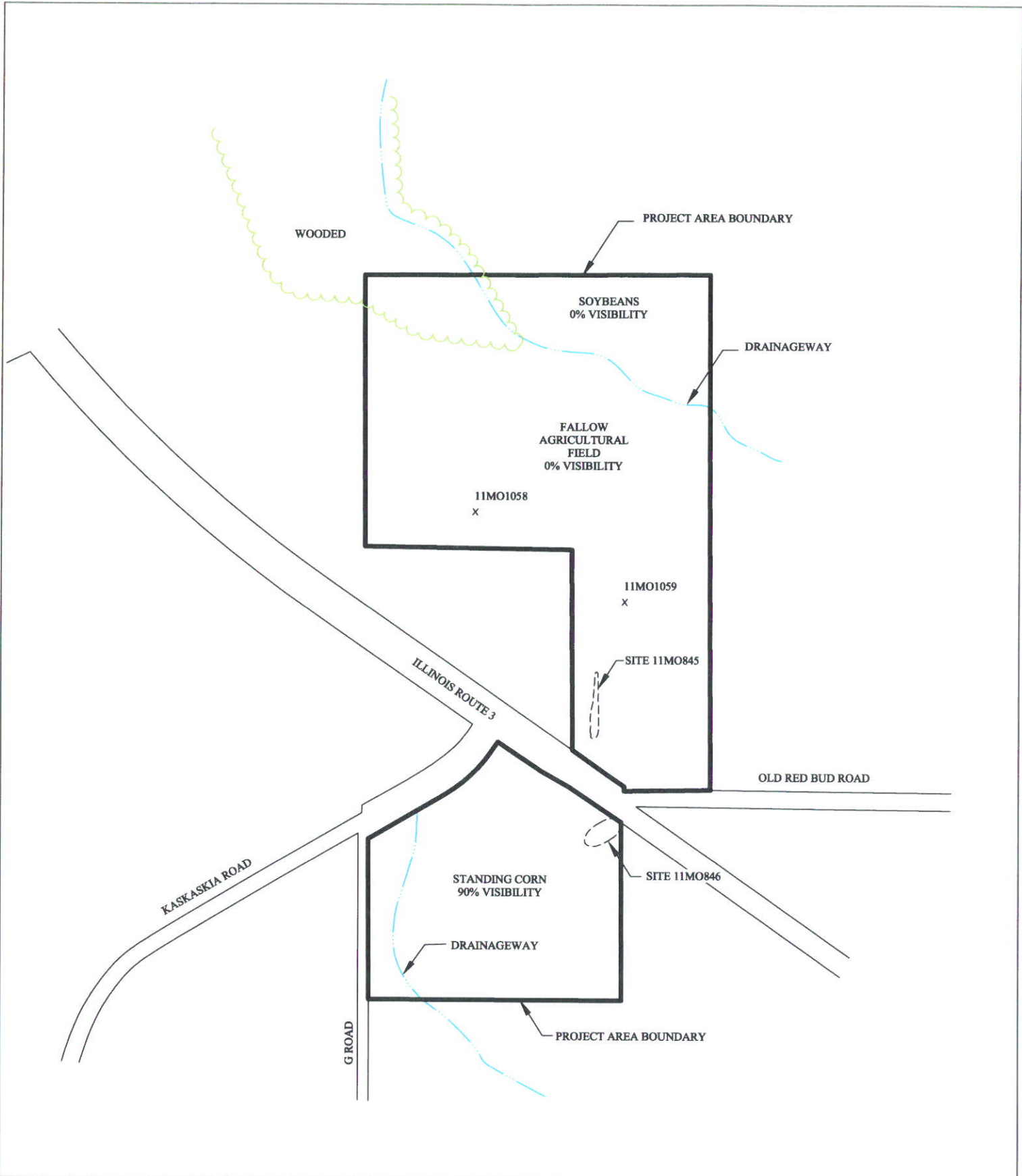
PROJECT NAME
 59.7 ACRE KASKASKIA ROAD TRACT
 MONROE COUNTY, ILLINOIS

PROJECT AREA MAP

DRAWN BY	KAW	DATE	08/2005	JOB NUMBER	2005-0731.40
CHECKED BY	SJD				

General Notes/Legend
 USGS TOPOGRAPHIC MAPS
 PADERBORN, ILLINOIS QUADRANGLE
 DATED 1990
 WATERLOO, ILLINOIS QUADRANGLE
 DATED 1991
 10' CONTOUR INTERVAL

SCALE 1" = 2000'
FIGURE 1



PROJECT NAME
 59.7 ACRE KASKASKIA ROAD TRACT
 MONROE COUNTY, ILLINOIS

SKETCH MAP

DRAWN BY	DKM	DATE	08/2005	JOB NUMBER	2005-0731.40
CHECKED BY	KAW				

General Notes/Legend

DRAWING BASED ON OBSERVATIONS MADE BY SCI PERSONNEL. DIMENSIONS AND LOCATIONS ARE APPROXIMATE, ACTUAL MAY VARY. DRAWING SHALL NOT BE USED OUTSIDE THE CONTEXT OF THE REPORT FOR WHICH IT WAS GENERATED.

SCALE 1" = 500'

FIGURE 2