

OCTOBER 2020 STUDY

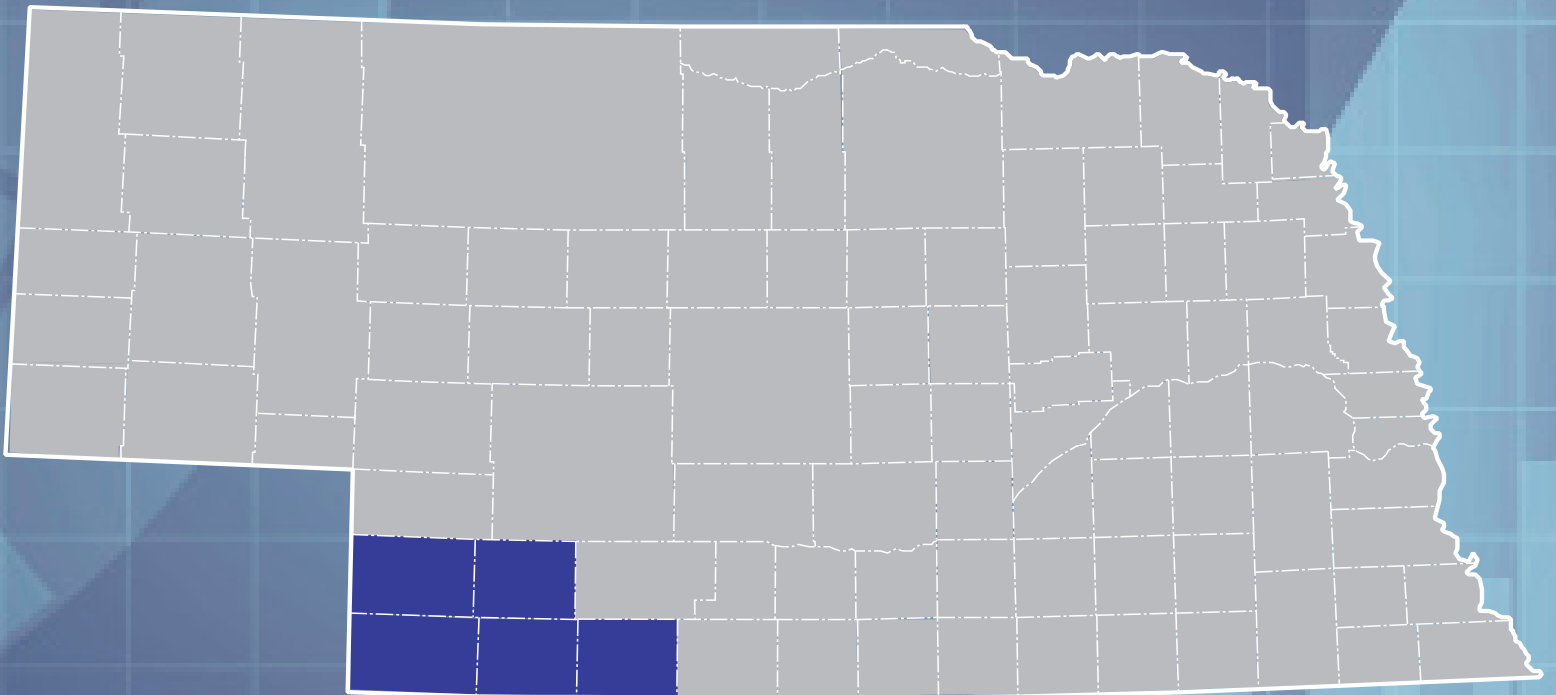


Nebraska Public Power District

Always there when you need us

ECONOMIC AND DEMOGRAPHIC TRENDS

Southwest Public Power District's Service Area
Including Chase, Dundy, Hayes, Hitchcock and Red Willow Counties



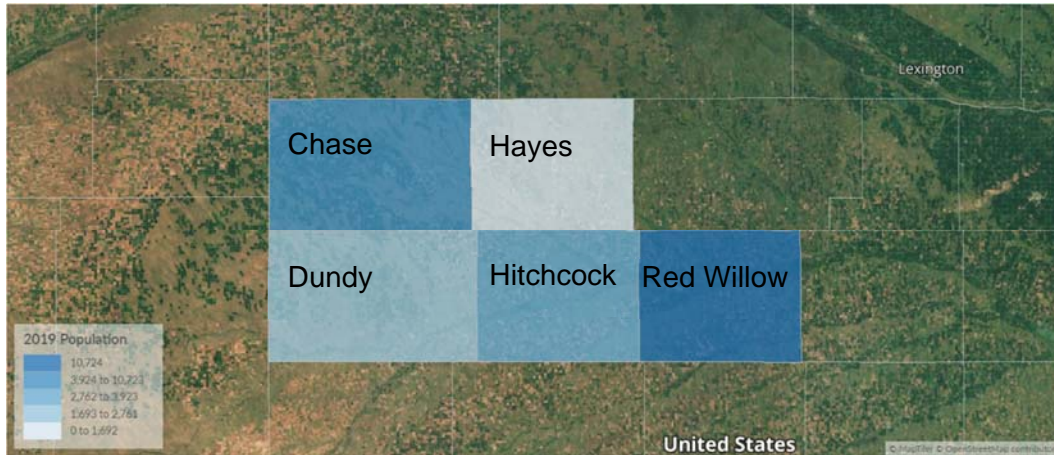
**Prepared by:
Ken Lemke, PhD**

Nebraska Public Power District
Economic Development Department
PO Box 499, 1414 15th Street
Columbus, NE 68602-0499
(402) 563-5535 • kmlemke@nppd.com

Available Online @ sites.nppd.com

ECONOMIC AND DEMOGRAPHIC TRENDS

Southwest Public Power District (SWPPD) Area



This study provides data and information on labor force, employment (workforce), commuting patterns, population, migration, retail sales, and income for the counties in the Southwest Public Power District (SWPPD). The five SWPPD Counties (Chase, Dundy, Hayes, Hitchcock, and Red Willow) are shown in the map above. Historical data on area production of petroleum and natural gas is also provided

LABOR FORCE AND EMPLOYMENT

Tables 1 through 6 on the following pages present nonfarm wage and salary data for the Total of the SWPPD counties, the total for Chase, Dundy, Hayes, and Hitchcock counties, and for each of the five counties in the SWPPD for the period 2009–2019. Nonfarm employment is broken down into 11 sectors as defined by the Bureau of Labor Statistics and which are compliant with the North American Industrial Classification System (NAICS).

The measure of employment reported in Tables 1 through 6 is data on the number of people employed in the Nonfarm Wage and Salary W&S sector (workforce) in the SWPPD area (regardless of their county of residence). Data on the number of people living in the area that are either employed or actively looking for work (labor force) will be presented in later portions of this report.

TABLE 1

Nonfarm Wage & Salary Employment (Workforce) Trends, 2009–2019

Total SWPPD Counties

	2009	2010	2011	2012	2013	2014	2015	2016	2017	2018	2019	% Change 2009-19
Workforce	8,322	8,363	8,474	8,678	8,832	8,762	8,552	8,448	8,324	8,256	8,235	-1.0
Goods Producing	1,462	1,493	1,610	1,702	1,756	1,705	1,600	1,544	1,551	1,559	1,564	7.0
Natural Resources and Mining	548	580	650	710	704	680	669	696	714	729	763	39.2
Construction	218	252	286	289	312	348	328	300	304	289	289	32.6
Manufacturing	696	660	674	703	740	676	603	548	533	541	513	-26.3
Service Providing	4,583	4,609	4,657	4,769	4,827	4,805	4,732	4,705	4,601	4,564	4,462	-2.6
Trade, Transportation & Utilities	2,119	2,139	2,139	2,142	2,144	2,136	2,068	2,077	1,980	1,947	1,891	-10.8
Information	167	166	173	159	157	164	170	171	165	147	147	-12.0
Financial Activities	362	346	339	354	369	360	366	366	358	347	330	-8.8
Professional and Business Services	290	296	314	333	314	318	295	284	269	287	310	6.9
Education and Health Services	755	762	772	780	897	880	895	895	947	944	884	17.1
Leisure & Hospitality	670	673	695	699	721	713	691	674	690	705	726	8.4
Other Services	220	227	225	302	225	234	247	238	192	187	174	-20.9
Total Private Employment	6,045	6,102	6,267	6,471	6,583	6,510	6,332	6,249	6,152	6,123	6,026	-0.3
Total Government Employment	2,277	2,261	2,207	2,207	2,249	2,252	2,220	2,199	2,172	2,133	2,209	-3.0
Federal Government	146	150	129	125	119	126	123	129	131	132	136	-6.8
State & Local Government	2,131	2,111	2,078	2,082	2,130	2,126	2,097	2,070	2,041	2,001	2,073	-2.7

NA: Not Available.

Source: Kenneth M. Lemke, PhD, Economist, Nebraska Public Power District, using data from U.S. Bureau of Labor Statistics, Quarterly Census of Employment and Wages and EMSI Q3 2020 Data Set.

Table 1 above presents data for the Total SWPPD Area for the period 2009 through 2019. During this 11-year period, total nonfarm wage and salary employment (workforce) in the area decreased by 1.0 percent (87 jobs) and total private employment decreased by 0.3 percent (19 jobs). Government employment decreased by 3.0 percent (68 jobs), with state and local government employment decreasing by 2.7 percent (58 jobs). The Natural Resources and Mining sector experienced the largest increase in both number of jobs, 215, and percent change, 39.2 percent; the Trade, Transportation, and Utilities sector experienced the largest decrease in jobs, 228 or 10.8 percent, and the Manufacturing sector experienced the largest percent decrease, 26.3 percent or 183 jobs.

TABLE 2

Nonfarm Wage & Salary Employment (Workforce) Trends, 2009–2019

Total Chase, Dundy, Hayes & Hitchcock Counties

	2009	2010	2011	2012	2013	2014	2015	2016	2017	2018	2019	% Change 2009-19
Workforce	3,184	3,244	3,307	3,373	3,431	3,388	3,309	3,270	3,264	3,229	3,239	1.7
Goods Producing	642	682	741	767	811	799	767	750	724	736	740	15.3
Natural Resources and Mining	400	425	478	525	541	509	503	502	518	532	543	35.8
Construction	61	71	104	91	115	138	115	103	109	103	99	62.3
Manufacturing	181	186	159	152	155	152	149	145	96	101	98	-45.9
Service Providing	1,396	1,423	1,451	1,492	1,494	1,448	1,431	1,414	1,487	1,470	1,393	-0.2
Trade, Transportation & Utilities	781	801	829	838	838	829	805	796	781	774	769	-1.5
Information	84	89	97	81	76	79	79	78	80	77	73	-13.1
Financial Activities	109	110	107	112	117	111	114	112	117	123	114	4.6
Professional and Business Services	43	47	52	62	56	55	53	53	57	63	75	74.4
Education and Health Services	153	144	148	145	179	166	170	165	225	228	160	4.6
Leisure & Hospitality	168	169	153	162	170	147	151	155	167	158	155	-7.7
Other Services	58	63	65	92	58	61	59	55	60	47	47	-19.0
Total Private Employment	2,038	2,105	2,192	2,259	2,305	2,247	2,198	2,164	2,211	2,206	2,133	4.7
Total Government Employment	1,146	1,139	1,115	1,114	1,126	1,141	1,111	1,106	1,053	1,023	1,106	-3.5
Federal Government	70	77	62	57	53	59	57	58	54	54	57	-18.6
State & Local Government	1,076	1,062	1,053	1,057	1,073	1,082	1,054	1,048	999	969	1,049	-2.5

Source: Kenneth M. Lemke, Economist, Nebraska Public Power District, using data from U.S. Bureau of Labor Statistics, Quarterly Census of Employment and Wages and EMSI Q3 2020 Data Set.

Table 2 above presents total data for Chase, Dundy, Hayes and Hitchcock Counties for the period 2009 through 2019. During this 11-year period, total nonfarm wage and salary employment (workforce) increased by 1.7 percent (55 jobs) and total private employment increased by 4.7 percent (95 jobs). Government employment decreased by 3.5 percent (40 jobs), with state and local government employment decreasing by 2.5 percent (27 jobs). The Professional and Business Services sector had the largest percent increase in jobs, 74.4 percent (32 jobs) and the Natural Resources and Mining sector had the largest increase in the number of jobs, 143 (35.8 percent). The Manufacturing sector experienced the largest decreases in both number of jobs, 98, and percent change, 45.9 percent.

TABLE 3

Nonfarm Wage & Salary Employment (Workforce) Trends, 2009–2019

Chase County, Nebraska

	2009	2010	2011	2012	2013	2014	2015	2016	2017	2018	2019	% Change 2009-19
Workforce	1,681	1,706	1,769	1,797	1,843	1,820	1,859	1,824	1,848	1,840	1,827	8.7
Goods Producing	315	315	354	363	398	382	407	404	413	433	427	35.6
Natural Resources and Mining	238	244	284	289	298	292	316	318	333	358	359	50.8
Construction	37	35	35	41	68	62	63	61	60	57	54	45.9
Manufacturing	40	37	36	33	31	28	28	25	20	18	14	-65.0
Service Providing	881	893	924	937	938	925	945	924	982	963	887	0.7
Trade, Transportation & Utilities	488	490	515	532	529	537	547	527	521	510	501	2.7
Information	51	56	66	48	50	50	49	48	46	46	44	-13.7
Financial Activities	72	72	71	76	84	81	84	86	90	92	87	20.8
Professional and Business Services	33	41	45	54	45	45	46	47	NA	NA	NA	NA
Education and Health Services	76	72	79	78	78	77	78	80	144	144	81	6.6
Leisure & Hospitality	114	111	99	95	110	90	96	95	NA	NA	NA	NA
Other Services	48	51	49	53	44	46	45	42	40	30	31	-35.4
Total Private Employment	1,196	1,208	1,278	1,300	1,336	1,308	1,352	1,328	1,395	1,396	1,314	9.9
Total Government Employment	485	497	491	497	506	512	507	496	453	443	513	5.8
Federal Government	26	28	24	23	23	25	26	28	27	25	26	0.0
State & Local Government	459	469	467	474	483	487	481	468	426	418	487	6.1

NA: Not Available

Source: Kenneth M. Lemke, Economist, Nebraska Public Power District, using data from U.S. Bureau of Labor Statistics, Quarterly Census of Employment and Wages and EMSI Q3 2020 Data Set.

Table 3 above presents data for Chase County for the period 2009 through 2019. During this 11-year period, total nonfarm wage and salary employment (workforce) increased by 8.7 percent (146 jobs) and total private employment increased by 9.9 percent (118 jobs). Government employment increased by 5.8 percent (28 jobs), with state and local government employment increasing by 6.1 percent (28 jobs). The Natural Resources and Mining sector experienced the largest increase in both number of jobs, 121, and percent change, 50.8 percent; the Manufacturing sector experienced the largest decreases in both number of jobs, 26, and percent change, 65.0 percent.

TABLE 4

Nonfarm Wage & Salary Employment (Workforce) Trends, 2009–2019

Dundy County, Nebraska

	2009	2010	2011	2012	2013	2014	2015	2016	2017	2018	2019	% Change 2009-19
Workforce	588	601	626	664	685	669	577	564	579	560	565	-3.9
Goods Producing	118	129	149	166	175	173	100	91	98	95	93	-21.2
Natural Resources and Mining	84	99	96	127	133	104	63	58	67	59	58	-31.0
Construction	11	14	38	19	18	43	16	14	15	14	17	54.5
Manufacturing	23	16	15	19	25	25	21	19	17	21	19	-17.4
Service Providing	222	229	239	263	272	256	240	235	244	232	237	6.8
Trade, Transportation & Utilities	76	85	92	99	114	104	89	91	90	89	99	30.3
Information	27	25	23	22	20	21	23	21	23	20	21	-22.2
Financial Activities	13	14	13	14	14	11	11	11	13	15	14	7.7
Professional and Business Services	9	10	12	10	9	8	9	6	8	8	14	55.6
Education and Health Services	66	65	62	61	70	62	66	63	56	56	53	-19.7
Leisure & Hospitality	26	23	26	38	36	38	34	35	39	33	29	11.5
Other Services	6	7	11	19	9	11	9	8	15	10	8	33.3
Total Private Employment	340	358	388	429	447	429	340	326	342	327	330	-2.9
Total Government Employment	248	243	238	236	237	241	237	238	236	234	235	-5.2
Federal Government	15	17	13	12	12	12	11	11	11	11	11	-26.7
State & Local Government	233	226	225	224	225	229	226	227	225	223	224	-3.9

Source: Kenneth M. Lemke, Economist, Nebraska Public Power District, using data from U.S. Bureau of Labor Statistics, Quarterly Census of Employment and Wages and EMSI Q3 2020 Data Set.

Table 4 above presents total data for Dundy County for the period 2009 through 2019. During this 11-year period, total nonfarm wage and salary employment (workforce) decreased by 3.9 percent (23 jobs) and total private employment decreased by 2.9 percent (10 jobs). Government employment decreased by 5.2 percent (13 jobs), with state and local government employment decreasing by 3.9 percent (9 jobs). The Professional and Business Services sector had the largest percent increase in jobs, 55.6 percent (5 jobs) and the Trade Transportation and Utilities sector had the largest increase in the number of jobs, 23 (30.3 percent). The Natural Resources and Mining sector experienced the largest decreases in both number of jobs, 26, and percent change, 31.4 percent.

TABLE 5**Nonfarm Wage & Salary Employment (Workforce) Trends, 2009–2019
Hayes County, Nebraska**

	2009	2010	2011	2012	2013	2014	2015	2016	2017	2018	2019	% Change 2009-19
Workforce	182	185	201	202	205	203	199	197	181	189	203	11.5
Goods Producing	36	39	55	66	67	74	78	81	78	67	69	91.7
Natural Resources and Mining	31	33	42	50	50	58	63	66	67	56	59	90.3
Construction	NA	NA	NA	NA	NA	NA	NA	NA	11	11	10	NA
Manufacturing	NA	NA	NA	NA	NA	NA	NA	NA	NA	NA	NA	NA
Service Providing	37	42	48	49	50	43	41	36	34	45	48	29.7
Trade, Transportation & Utilities	21	24	33	33	31	25	23	23	23	30	30	42.9
Information	NA	NA	NA	NA	NA	NA	NA	NA	NA	NA	NA	NA
Financial Activities	NA	NA	NA	NA	NA	NA	NA	NA	NA	NA	NA	NA
Professional and Business Services	NA	NA	NA	NA	NA	NA	NA	NA	NA	NA	NA	NA
Education and Health Services	NA	NA	NA	NA	NA	NA	NA	NA	NA	NA	NA	NA
Leisure & Hospitality	NA	NA	NA	NA	NA	NA	NA	NA	NA	NA	NA	NA
Other Services	NA	NA	NA	NA	NA	NA	NA	NA	NA	NA	NA	NA
Total Private Employment	73	81	103	115	117	117	119	117	112	112	117	60.3
Total Government Employment	109	104	98	87	88	86	80	80	69	77	86	-21.1
Federal Government	13	14	11	9	7	10	11	10	6	8	10	-23.1
State & Local Government	96	90	87	78	81	76	69	70	63	69	76	-20.8

NA: Not Available.

Source: Kenneth M. Lemke, Economist, Nebraska Public Power District, using data from U.S. Bureau of Labor Statistics, Quarterly Census of Employment and Wages and EMSI Q3 2020 Data Set.

Table 5 above presents total data for Hayes County for the period 2009 through 2019. During this 11-year period, total nonfarm wage and salary employment (workforce) increased by 11.5 percent (21 jobs) and total private employment increased by 60.3 percent (44 jobs). Government employment decreased by 21.1 percent (23 jobs), with state and local government employment decreasing by 20.8 percent (20 jobs). Wage and salary employment (workforce) increased by 91.3 percent (33 jobs) in the Goods Producing Sectors and by 29.7 percent (11 jobs) in the Service Providing sectors.

TABLE 6

Nonfarm Wage & Salary Employment (Workforce) Trends, 2009–2019

Hitchcock County, Nebraska

	2009	2010	2011	2012	2013	2014	2015	2016	2017	2018	2019	% Change 2009-19
Workforce	733	752	712	710	701	697	692	688	651	650	659	-10.1
Goods Producing	175	199	180	174	175	175	183	175	134	141	151	-13.7
Natural Resources and Mining	50	49	54	59	65	59	63	60	51	59	68	36.0
Construction	12	20	22	22	20	25	28	20	24	21	19	58.3
Manufacturing	113	129	104	93	91	91	92	95	59	61	64	-43.4
Service Providing	254	259	244	243	231	219	205	219	222	223	218	-14.2
Trade, Transportation & Utilities	193	202	188	173	163	162	145	155	149	147	143	-25.9
Information	2	NA	NA	NA	NA	NA	NA	NA	NA	NA	NA	NA
Financial Activities	13	13	12	NA	12	11	13	12	12	10	NA	NA
Professional and Business Services	NA	NA	NA	NA	NA	NA	NA	NA	NA	NA	NA	NA
Education and Health Services	11	NA	NA	NA	27	22	21	19	23	24	21	90.9
Leisure & Hospitality	27	27	24	24	18	13	14	21	25	27	29	7.4
Other Services	NA	NA	NA	18	NA	NA	NA	NA	NA	NA	NA	NA
Total Private Employment	429	458	424	417	406	394	388	394	356	364	369	-14.0
Total Government Employment	304	295	288	294	295	302	287	291	295	270	272	-10.5
Federal Government	16	18	14	13	11	12	9	9	10	10	10	-37.5
State & Local Government	288	277	274	281	284	290	278	282	285	260	262	-9.0

NA: Not Available.

Source: Kenneth M. Lemke, Economist, Nebraska Public Power District, using data from U.S. Bureau of Labor Statistics, Quarterly Census of Employment and Wages and EMSI Q3 2020 Data Set.

Table 6 above presents total data for Hitchcock County for the period 2009 through 2019. During this 11-year period, total nonfarm wage and salary employment (workforce) decreased by 10.1 percent (74 jobs) and total private employment decreased by 14.0 percent (60 jobs). Government employment decreased by 10.5 percent (32 jobs), with state and local government employment decreasing by 9.0 percent (26 jobs). Wage and salary employment (workforce) decreased by 13.7 percent (24 jobs) in the Goods Producing Sectors and by 14.2 percent (36 jobs) in the Service Providing sectors.

TABLE 7

Nonfarm Wage & Salary Employment (Workforce) Trends, 2009–2019

Red Willow County, Nebraska

	2009	2010	2011	2012	2013	2014	2015	2016	2017	2018	2019	% Change 2009-19
Workforce	5,138	5,119	5,167	5,303	5,402	5,375	5,243	5,179	5,058	5,026	4,996	-2.8
Goods Producing	821	810	869	935	944	905	833	794	827	823	824	0.4
Natural Resources and Mining	148	155	172	185	163	171	166	193	196	197	220	48.6
Construction	157	182	182	199	198	211	214	197	195	186	190	21.0
Manufacturing	516	474	515	551	584	523	453	404	437	441	415	-19.6
Service Providing	3,186	3,187	3,206	3,276	3,334	3,359	3,300	3,292	3,113	3,094	3,069	-3.7
Trade, Transportation & Utilities	1,338	1,338	1,310	1,303	1,308	1,307	1,263	1,281	1,199	1,173	1,122	-16.1
Information	82	77	76	78	81	86	91	93	85	70	74	-9.8
Financial Activities	252	236	232	242	252	249	252	255	241	223	216	-14.3
Professional and Business Services	247	248	262	271	259	264	242	231	212	223	235	-4.9
Education and Health Services	603	618	623	636	716	714	725	730	722	717	724	20.1
Leisure & Hospitality	502	504	542	536	552	567	540	519	523	547	571	13.7
Other Services	162	165	160	209	167	173	188	183	132	140	127	-21.6
Total Private Employment	4,007	3,997	4,075	4,211	4,279	4,264	4,134	4,085	3,940	3,917	3,894	-2.8
Total Government Employment	1,132	1,122	1,092	1,092	1,123	1,111	1,109	1,094	1,118	1,110	1,103	-2.6
Federal Government	76	73	67	68	66	67	66	71	77	78	79	3.9
State & Local Government	1,056	1,049	1,025	1,024	1,057	1,044	1,043	1,023	1,041	1,032	1,024	-3.0

NA: Not Available.

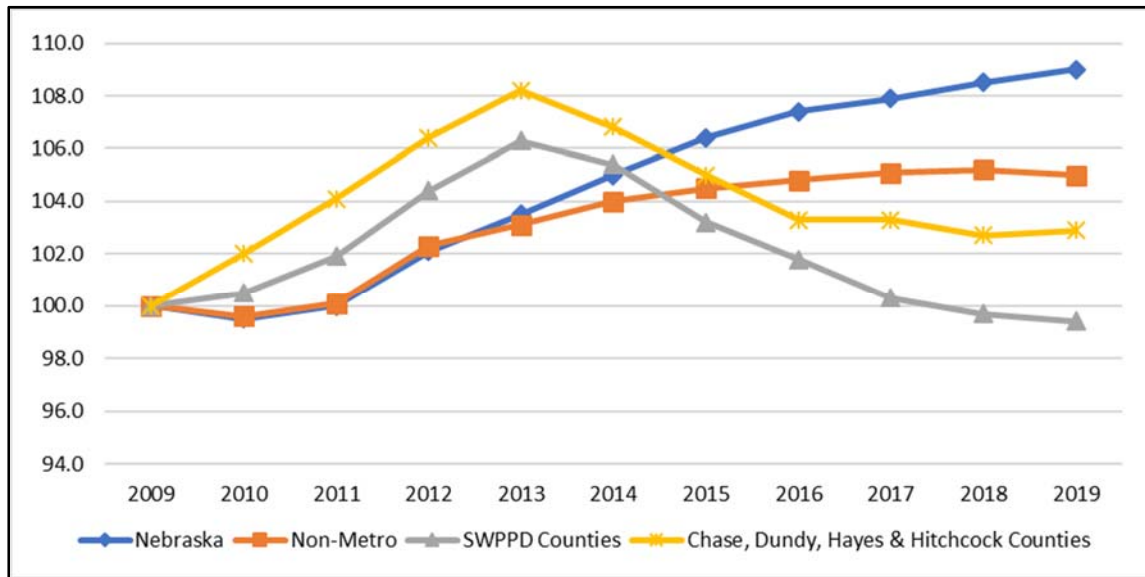
Source: Kenneth M. Lemke, Economist, Nebraska Public Power District, using data from U.S. Bureau of Labor Statistics, Quarterly Census of Employment and Wages and EMSI Q3 2020 Data Set.

Table 7 above presents total data for Red Willow County for the period 2009 through 2019. During this 11-year period, total nonfarm wage and salary employment (workforce) decreased by 2.8 percent (142 jobs), with total private employment also decreasing by 2.8 percent (113 jobs). Government employment decreased by 2.6 percent (29 jobs), with state and local government employment decreasing by 3.0 percent (32 jobs). The Natural Resources and Mining sector had the largest percent increase in jobs, 48.6 percent (72 jobs) and the Education and Health Services sector had the largest increase in the number of jobs, 121 (20.1 percent). The Trade, Transportation and Utilities sector experienced the largest decrease in jobs, 216 or 16.1 percent, and the Other Services sector experienced the largest percent decrease, 21.6 percent or 35 jobs.

FIGURE 1

**Nonfarm Wage & Salary Employment (Workforce),
Index, 2009=100, 2009–2019**

**Nebraska, Non-Metro, SWPPD Counties and Total Chase, Dundy, Hayes & Hitchcock
Counties**

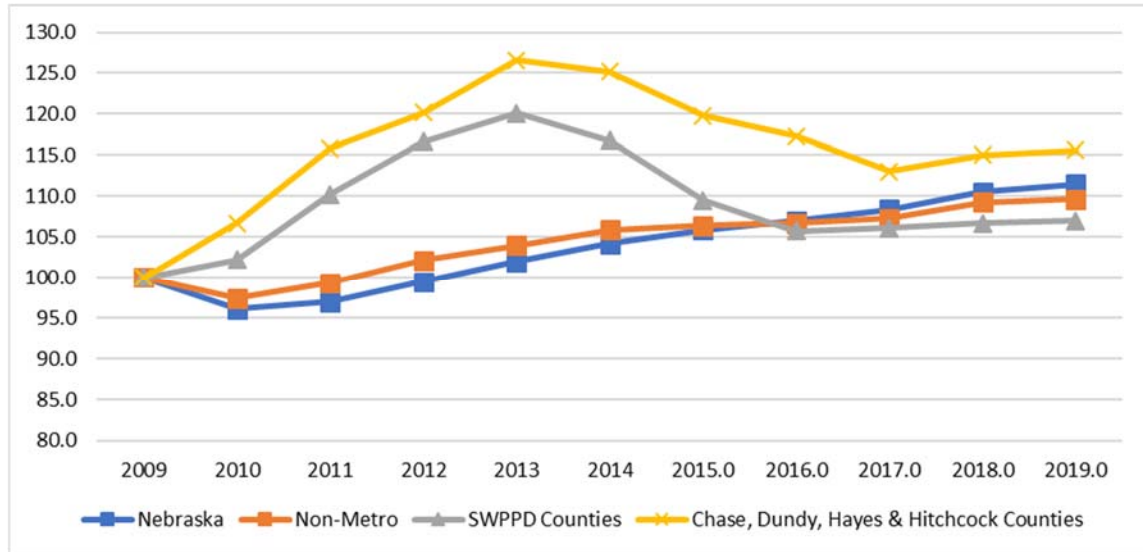


Source: U.S. Bureau of Labor Statistics, Quarterly Census of Employment and Wages.

Figure 1 shows total non-farm wage and salary (workforce) employment growth for Nebraska, Non-Metro Nebraska, the SWPPD Area and the total of Chase, Dundy, Hayes, and Hitchcock Counties for the period 2009–2019. Non-metropolitan Nebraska is defined as Nebraska minus the seven metropolitan counties of Cass, Douglas, Lancaster, Sarpy, Saunders, Seward, and Washington. As Figure 1 indicates, total non-farm wage and salary employment in the SWPPD Area decreased 0.6 percent (50 jobs) from 2009 to 2019, compared to a 2.9 percent (93 jobs) increase for the total of Chase, Dundy, Hayes, and Hitchcock Counties, a 9.0 percent (80,892 jobs) increase in Nebraska, and a 5.0 percent (17,527 jobs) increase in non-metropolitan Nebraska.

FIGURE 2

Nonfarm, Wage & Salary Employment (Workforce), Goods Producing Industries, Index 2009=100, 2009–2019
Metro, Non-Metro, SWPPD Counties and Total Chase, Dundy, Hayes & Hitchcock Counties



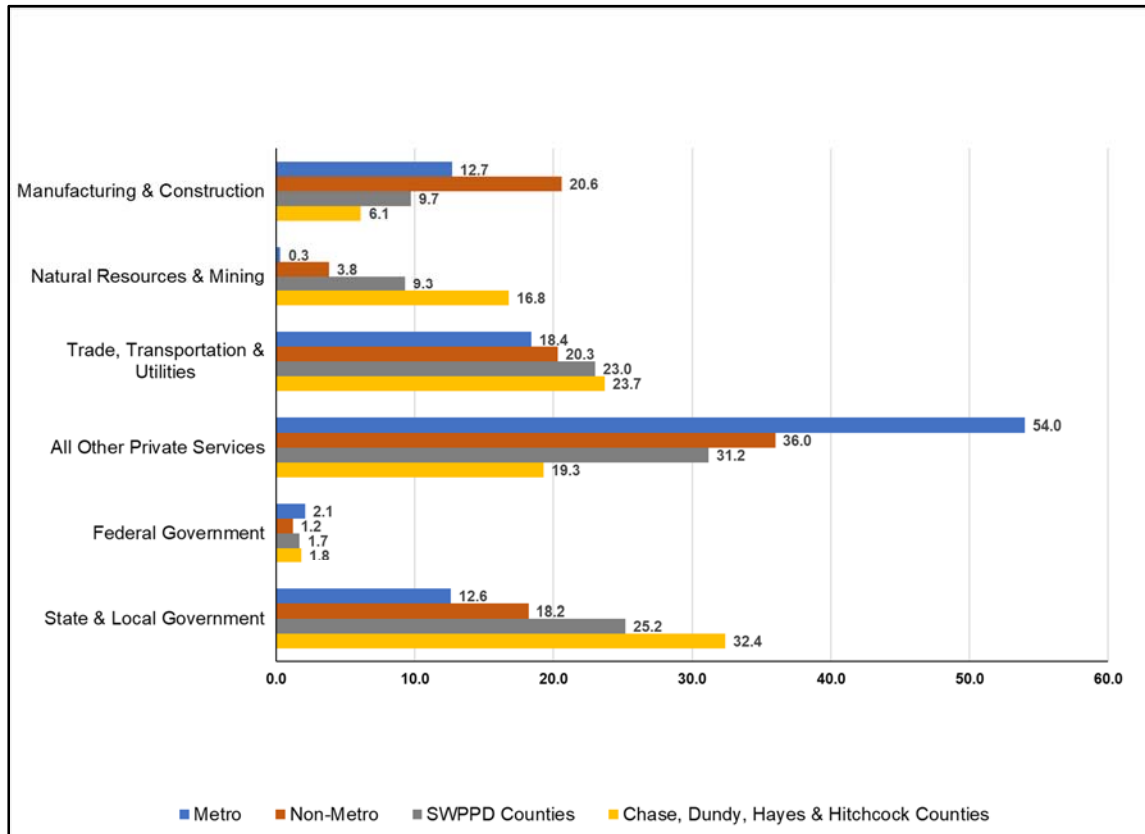
Source: U.S. Bureau of Labor Statistics, Quarterly Census of Employment and Wages.

Figure 2 shows growth in non-farm wage and salary employment (workforce) during the period 2009–2019 for Goods Producing sectors in Nebraska, Non-Metro Nebraska, the SWPPD Area and the total of Chase, Dundy, Hayes, and Hitchcock Counties. Goods producing businesses in the SWPPD Area recorded a 7.0 percent increase in employment (103 jobs) between 2009 and 2019, with a total increase of 15.6 percent (100 jobs) in Chase, Dundy, Hayes, and Hitchcock Counties. This compares to a 11.5 percent increase (17,424 jobs) for Nebraska and a 9.6 percent increase (7,859 jobs) for non-metropolitan Nebraska over the same period.

FIGURE 3

Nonfarm, Wage & Salary Employment (Workforce) by Major Economic Sector, 2019

Metro, Non-Metro, SWPPD Counties and Total Chase, Dundy, Hayes & Hitchcock Counties



Source: Kenneth M. Lemke, Economist, Nebraska Public Power District, using data from U.S. Bureau of Labor Statistics, Quarterly Census of Employment and Wages and EMSI Q3 2020 Data Set.

Figure 3 displays the distribution of non-farm wage and salary (W&S) employment by major economic categories in the SWPPD Area, the total of Chase, Dundy, Hayes and Hitchcock Counties, Non-Metropolitan Nebraska and Metropolitan Nebraska. When comparing SWPPD employment to the total for Chase, Dundy, Hayes and Hitchcock counties, the largest deviation occurs in the All Other Services sectors which employs 31.2 percent of the SWPPD workforce and only 19.3 percent of workers in Chase, Dundy, Hayes and Hitchcock counties. When comparing SWPPD employment to the Metropolitan workforce, the largest deviation also occurs in the All Other Services sectors. However, the percent of All Other Services workers in Metropolitan Nebraska, 54.0 percent, is much larger than in the SWPPD Area. When comparing SWPPD employment to the Non-Metropolitan workforce, the largest deviation occurs in the Manufacturing and Construction sectors, which employs 9.7 percent of the SWPPD workforce and 20.6 percent of Non-Metropolitan workers.

TABLE 8**Labor Force & Employment Trends, 2009–2019
SWPPD Counties**

	2009	2010	2011	2012	2013	2014	2015	2016	2017	2018	2019
Labor Force	11,231	11,765	11,963	12,036	12,160	11,865	11,566	11,344	11,142	11,109	11,177
Employment	10,753	11,342	11,563	11,658	11,800	11,562	11,278	11,042	10,867	10,832	10,876
Unemployment	478	423	400	378	360	303	288	302	275	277	301
Unemployment Rate	4.3	3.6	3.3	3.1	3.0	2.6	2.5	2.7	2.5	2.5	2.7

Source: U.S. Bureau of Labor Statistics, Local Area Unemployment Statistics.

Table 8 above shows labor force information for the total SWPPD Area for the time period 2009–2019. In the case of labor force information (labor force, unemployment, unemployment rate and total employment), data is measured based on the county of residence of the labor force participants, regardless of where they work. As the labor force data indicate, between 2009 and 2019 there was a slight decrease (0.5 percent or 54 people) in the number of SWPPD Area residents participating in the labor force. Despite this drop in the labor force, employment increased by 1.1 percent (123 people) due primarily to a 37.0 percent (177 people) decrease in unemployment.

TABLE 9**Labor Force & Employment Trends, 2009–2019
Total Chase, Dundy, Hayes & Hitchcock Counties**

	2009	2010	2011	2012	2013	2014	2015	2016	2017	2018	2019
Labor Force	5,132	5,549	5,676	5,679	5,721	5,585	5,468	5,376	5,312	5,278	5,327
Employment	4,928	5,353	5,494	5,508	5,551	5,444	5,341	5,242	5,184	5,144	5,187
Unemployment	204	196	182	171	170	141	127	134	128	134	140
Unemployment Rate	4.0	3.5	3.2	3.0	3.0	2.5	2.3	2.5	2.4	2.5	2.6

Source: U.S. Bureau of Labor Statistics, Local Area Unemployment Statistics.

Table 9 above shows labor force information for the total of Chase, Dundy, Hayes, and Hitchcock Counties for the time period 2009–2019. As the labor force data indicate, between 2009 and 2019 there was a 3.8 percent (195 person) increase in the number of residents participating in the labor force. Additionally, employment increased by 5.3 percent (259 people) due partially to a 31.4 percent (64 person) decrease in unemployment.

EMPLOYEE COMPENSATION

Table 10 below shows average annual 2019 wages by industry for the United States, Nebraska as a whole and for each of the SWPPD counties. Within the SWPPD area, average annual nonfarm wage & salary wages are highest in Dundy County (\$41,438). The average annual wage in Dundy county was \$6,424 (13.4 percent) below the overall statewide average of \$47,862 and \$17,781 (30.0 percent) below the overall U.S. average of \$59,219. The high average wage in Dundy County is due to high average wages in Financial Services, \$64,503, Trade, Transportation and Utilities, \$46,928, and Natural Resources and Mining, \$45,787.

TABLE 10
Average Annual Wage by Industry, 2019
U.S., Nebraska & SWPPD Counties

	U.S. TOTAL	Nebraska	Chase	Dundy	Hayes	Hitchcock	Red Willow
Nonfarm Wage & Salary	59,219	47,862	39,271	41,438	32,159	36,812	37,821
Goods-producing	67,510	52,127	42,115	41,838	37,047	47,999	46,550
Natural resources and mining	61,836	42,699	42,898	45,787	38,973	50,130	36,307
Construction	64,839	53,811	41,535	35,037	25,947	38,655	39,481
Manufacturing	69,928	52,708	24,269	35,811	NA	48,453	55,210
Service-providing	57,448	46,319	38,499	41,746	26,729	31,444	34,935
Trade, transportation, and utilities	49,305	41,566	40,765	46,928	27,921	38,399	34,841
Information	119,654	66,729	47,726	NA	NA	NA	23,286
Professional and business services	78,402	60,590	53,221	25,801	NA	NA	43,469
Financial activities	98,509	69,067	54,352	64,503	NA	40,218	55,374
Education and health services	51,909	48,769	26,535	30,128	NA	13,853	45,318
Leisure and hospitality	25,079	17,221	11,507	13,248	NA	5,756	15,173
Other services	39,942	33,594	30,533	NA		35,399	21,580
All Private industries	59,213	47,517	39,671	41,772	32,809	38,218	37,393
Federal Government	84,313	70,798	38,246	44,516	41,767	34,757	57,894
State Government	62,810	55,399	40,660	47,286	NA	NA	47,944
Local Government	53,119	44,597	38,174	40,481	NA	NA	35,898

NA: Not Available.

Source: U.S. Bureau of Labor Statistics, Quarterly Census of Employment and Wages.

TABLE 11**Entry and Experienced Workers' Wages, 2019
SWPPD Counties**

Standard Occupational Code Title	Entry Level		Experienced	
	Hourly	Annual	Hourly	Annual
General and Operations Managers	\$22.96	\$47,748	\$50.59	\$105,234
Accountants and Auditors	\$23.46	\$48,797	\$36.23	\$75,349
Engineering Technologists and Technicians, Except Drafters	\$21.19	\$44,066	\$34.19	\$71,107
Registered Nurses	\$27.43	\$57,049	\$36.92	\$76,800
Health Practitioner Support Technologists and Technicians	\$10.80	\$22,470	\$18.44	\$38,351
Licensed Practical and Licensed Vocational Nurses	\$18.24	\$37,931	\$23.01	\$47,865
Nursing Assistants, Orderlies, and Psychiatric Aides	\$12.22	\$25,426	\$15.15	\$31,511
First-Line Supervisors of Office and Administrative Support Workers	\$17.87	\$37,163	\$28.61	\$59,501
Carpenters	\$14.32	\$29,786	\$19.38	\$40,309
Electricians	\$18.23	\$37,911	\$28.80	\$59,908
Pipelayers, Plumbers, Pipefitters, and Steamfitters	\$15.97	\$33,227	\$26.97	\$56,100
First-Line Supervisors of Mechanics, Installers, and Repairers	\$22.01	\$45,775	\$35.97	\$74,807
Heavy Vehicle and Mobile Equipment Service Technicians and Mechanics	\$15.28	\$31,783	\$22.48	\$46,759
Industrial Machinery Installation, Repair, and Maintenance Workers	\$18.97	\$39,447	\$27.01	\$56,186
First-Line Supervisors of Production and Operating Workers	\$21.24	\$44,169	\$36.27	\$75,448
Extruding, Forming, Pressing, and Compacting Machine Setters, Operators, and Tenders	\$18.47	\$38,425	\$24.92	\$51,835
Welding, Soldering, and Brazing Workers	\$15.44	\$32,109	\$21.18	\$44,062
Machinists	\$14.81	\$30,800	\$19.85	\$41,288
First-Line Supervisors of Transportation and Material Moving Workers	\$18.80	\$39,108	\$33.15	\$68,952
Industrial Truck and Tractor Operators	\$15.39	\$32,016	\$20.06	\$41,733

Source: EMSI Q3 2020 Data Set.

Table 11 above shows 2019 average hourly and annual, entry and experienced wages for selected occupations for businesses located in the SWPPD Area.

RESIDENCE AND WORK FLOW PATTERNS

The next series of tables show residence and workflow patterns for the SWPPD Area. A Work Destination report looks at where residents in a selected area are working (where they are commuting to work). A Home Destination report looks at the area from which a county is pulling employees to fill positions. These data are from the U.S. Census Bureau’s Longitudinal Employer-Household Dynamics (LEHD) program. This program uses a variety of statistical and computing techniques to combine federal and state administrative data on employers and employees with core Census Bureau censuses and surveys while protecting the confidentiality of people and firms that provide the data. The most current data available is from 2017.

Table 12 examines the Home Destination counties for the total SWPPD Area and the combined Chase, Dundy, Hayes, and Hitchcock Counties area. In 2017, the Census Bureau identified 7,464 primary jobs within the SWPPD Area and 2,910 within Chase, Dundy, Hayes, and Hitchcock counties. The 2,910 primary jobs in Chase, Dundy, Hayes, and Hitchcock Counties represent 39.0 percent of the overall SWPPD total.

As Table 12 shows, 74.1 percent of the SWPPD Area’s primary jobs are filled by residents of the five counties included in this area. Approximately 72.1 percent of primary jobs within Chase, Dundy, Hayes, and Hitchcock Counties are filled by residents of these four-counties.

TABLE 12

Where SWPPD Area Workers Live, 2017 SWPPD Counties

	All SWPPD Counties		Chase, Dundy, Hayes & Hitchcock Counties	
	Count	Share	Count	Share
Chase County, NE	1,077	14.4%	1,042	35.8%
Dundy County, NE	471	6.3%	454	15.6%
Hayes County, NE	230	3.1%	192	6.6%
Hitchcock County, NE	656	8.8%	410	14.1%
Red Willow County, NE	3,094	41.5%	170	5.8%
Lincoln County, NE	206	2.8%	62	2.1%
Furnas County, NE	127	1.7%	11	0.4%
Dawson County, NE	105	1.4%	10	0.3%
Decatur County, KS	99	1.3%	11	0.4%
Perkins County, NE	86	1.2%	69	2.4%
Frontier County, NE	83	1.1%	6	0.2%
Keith County, NE	76	1.0%	25	0.9%
Buffalo County, NE	69	0.9%	12	0.4%
Douglas County, NE	51	0.7%	14	0.5%
Lancaster County, NE	49	0.7%	1	0.0%
Scotts Bluff County, NE	45	0.6%	22	0.8%
All Other Counties	940	12.6%	399	13.7%

Source: US Census Bureau, *OnTheMap* database.

TABLE 13**Where SWPPD Area Residents Work, 2017**
SWPPD Counties

	All SWPPD Counties		Chase, Dundy, Hayes & Hitchcock Counties	
	Count	Share	Count	Share
Chase County, NE	1,225	15.3%	1,189	33.9%
Dundy County, NE	425	5.3%	412	11.8%
Hayes County, NE	146	1.8%	134	3.8%
Hitchcock County, NE	472	5.9%	363	10.4%
Red Willow County, NE	3,260	40.7%	336	9.6%
Lincoln County, NE	296	3.7%	115	3.3%
Buffalo County, NE	210	2.6%	63	1.8%
Furnas County, NE	205	2.6%	24	0.7%
Lancaster County, NE	197	2.5%	97	2.8%
Douglas County, NE	177	2.2%	69	2.0%
Dawson County, NE	116	1.4%	44	1.3%
Hall County, NE	104	1.3%	53	1.5%
Perkins County, NE	72	0.9%	65	1.9%
Scotts Bluff County, NE	64	0.8%	27	0.8%
Keith County, NE	62	0.8%	37	1.1%
Decatur County, KS	55	0.7%	11	0.3%
All Other Counties	920	11.5%	466	13.3%

Source: US Census Bureau, *OnTheMap* database.

SWPPD Area residents also travel to locations outside the SWPPD Area for work—this is the Work Destination report for the labor shed area. Table 13 depicts the work locations of residents within the SWPPD Area and the Chase, Dundy, Hayes, and Hitchcock Counties areas. The Census identified 8,006 residents with jobs living within the SWPPD Area and 3,505 within the Chase, Dundy, Hayes, and Hitchcock Counties area. As Table 13 indicates, the primary job for 69.0 percent of SWPPD Area residents was located within the five-county area. This means the primary job for 31.0 percent of SWPPD Area residents was located outside the five-county area. Table 13 also indicates, 40.1 percent of employed Chase, Dundy, Hayes, and Hitchcock County residents traveled outside the four-county area to their primary job.

Table 14 Part A and Part B below and on the following page, shows an inflow/outflow report for the SWPPD Area labor force. The data show labor force and employment size, efficiency, and other characteristics. These data were also obtained from the U.S. Census Bureau’s Longitudinal Employer-Household Dynamics (LEHD) section and help identify characteristics of labor force movement for The SWPPD Area and Chases, Dundy, Hayes, and Hitchcock Counties.

TABLE 14 Part A
Inflow/Outflow Report, 2017
SWPPD Counties

	All SWPPD Counties		Chase, Dundy, Hayes & Hitchcock Counties	
	Share	Count	Share	Count
Selection Area Labor Market Size (Primary Jobs)				
Employed in the Selection Area	7,464	100.0%	2,910	100.0%
Living in the Selection Area	8,006	107.3%	3,505	120.4%
Net Job Inflow (+) or Outflow (-)	-542	-	-595	-
In-Area Labor Force Efficiency (Primary Jobs)				
Living in the Selection Area	8,006	100.0%	3,505	100.0%
Living and Employed in the Selection Area	5,528	69.0%	2,098	59.9%
Living in the Selection Area but Employed Outside	2,478	31.0%	1,407	40.1%
In-Area Employment Efficiency (Primary Jobs)				
Employed in the Selection Area	7,464	100.0%	2,910	100.0%
Employed and Living in the Selection Area	5,528	74.1%	2,098	72.1%
Employed in the Selection Area but Living Outside	1,936	25.9%	812	27.9%

Source: US Census Bureau, *OnTheMap* database.

TABLE 14 Part B

Inflow/Outflow Report, 2017
SWPPD Counties

	All SWPPD Counties		Chase, Dundy, Hayes & Hitchcock Counties	
	Share	Count	Share	Count
Outflow Job Characteristics (Primary Jobs)				
External Jobs Filled by Residents	2,478	100.0%	1,407	100.0%
Workers Aged 29 or younger	683	27.6%	326	23.2%
Workers Aged 30 to 54	1,159	46.8%	719	51.1%
Workers Aged 55 or older	636	25.7%	362	25.7%
Workers Earning \$1,250 per month or less	577	23.3%	306	21.7%
Workers Earning \$1,251 to \$3,333 per month	954	38.5%	536	38.1%
Workers Earning More than \$3,333 per month	947	38.2%	565	40.2%
Workers in the "Goods Producing" Industry Class	378	15.3%	250	17.8%
Workers in the "Trade, Transportation, and Utilities" Industry Class	848	34.2%	448	31.8%
Workers in the "All Other Services" Industry Class	1,252	50.5%	709	50.4%
Inflow Job Characteristics (Primary Jobs)				
Internal Jobs Filled by Outside Workers	1,936	100.0%	812	100.0%
Workers Aged 29 or younger	477	24.6%	155	19.1%
Workers Aged 30 to 54	909	47.0%	371	45.7%
Workers Aged 55 or older	550	28.4%	286	35.2%
Workers Earning \$1,250 per month or less	433	22.4%	172	21.2%
Workers Earning \$1,251 to \$3,333 per month	748	38.6%	280	34.5%
Workers Earning More than \$3,333 per month	755	39.0%	360	44.3%
Workers in the "Goods Producing" Industry Class	314	16.2%	176	21.7%
Workers in the "Trade, Transportation, and Utilities" Industry Class	710	36.7%	272	33.5%
Workers in the "All Other Services" Industry Class	912	47.1%	364	44.8%
Interior Flow Job Characteristics (Primary Jobs)				
Internal Jobs Filled by Residents	5,528	100.0%	2,098	100.0%
Workers Aged 29 or younger	1,095	19.8%	402	19.2%
Workers Aged 30 to 54	2,663	48.2%	981	46.8%
Workers Aged 55 or older	1,770	32.0%	715	34.1%
Workers Earning \$1,250 per month or less	1,288	23.3%	497	23.7%
Workers Earning \$1,251 to \$3,333 per month	2,205	39.9%	849	40.5%
Workers Earning More than \$3,333 per month	2,035	36.8%	752	35.8%
Workers in the "Goods Producing" Industry Class	1,154	20.9%	478	22.8%
Workers in the "Trade, Transportation, and Utilities" Industry Class	1,198	21.7%	475	22.6%
Workers in the "All Other Services" Industry Class	3,176	57.5%	1,145	54.6%

Source: US Census Bureau, *OnTheMap* database.

TABLE 15**Distance/Direction Report – Home to Work Census Block, 2017
SWPPD Counties**

	All SWPPD Counties		Chase, Dundy, Hayes & Hitchcock Counties	
	Count	Share	Count	Share
Total Primary Jobs	8,006	100.0%	3,505	100.0%
Less than 10 miles	3,513	43.9%	976	27.8%
10 to 24 miles	1,590	19.9%	1,058	30.2%
25 to 50 miles	773	9.7%	527	15.0%
Greater than 50 miles	2,130	26.6%	944	26.9%

Source: US Census Bureau, *OnTheMap* database.

The Distance/Direction Report depicted in Table 15 shows the number (count) and percentage (share) of primary job holders living in the SWPPD Area and in the Chase, Dundy, Hayes, and Hitchcock Counties Area and the distance they travel to work. These data show over 63.8 percent of SWPPD Area residents and 58.0 Chase, Dundy, Hayes, and Hitchcock Counties Area residents travel less than 25 miles to work.

TABLE 16**Distance/Direction Report – Work to Home Census Block, 2017
SWPPD Counties**

	All SWPPD Counties		Chase, Dundy, Hayes & Hitchcock Counties	
	Count	Share	Count	Share
Total Primary Jobs	7,464	100.0%	2,910	100.0%
Less than 10 miles	3,510	47.0%	970	33.3%
10 to 24 miles	1,549	20.8%	960	33.0%
25 to 50 miles	851	11.4%	467	16.0%
Greater than 50 miles	1,554	20.8%	513	17.6%

Source: US Census Bureau, *OnTheMap* database.

Table 16 shows the number (count) and percentage (share) of people employed within the SWPPD Area and the Chase, Dundy, Hayes, and Hitchcock Counties area and the distance to their homes. These data show over 67.8 percent of SWPPD Area workers and 66.3 percent of Chase, Dundy, Hayes, and Hitchcock Counties Area workers travel less than 25 miles to work.

POPULATION AND MIGRATION TRENDS

Tables 17, below, and 18, on the following page, present population trend data for counties and incorporated areas in the SWPPD Area. As Table 17 indicates, The SWPPD Area’s population decreased 15.8 percent (3,923 people) between 1970 and 2010. This population decrease compares to a 23.0 percent increase for Nebraska as a whole and a 0.4 percent (3,278 people) increase for Non-Metropolitan Nebraska. The SWPPD Area reported a 4.2 percent (879 people) decrease in population from 2010 to 2019.

TABLE 17

County Population, 1970–2019 Nebraska, Non-Metro Nebraska & SWPPD Counties

	1970	1980	1990	2000	2010	2019	% Change 1970 - 2010	% Change 2010 - 2019
Nebraska	1,485,333	1,569,825	1,578,417	1,711,265	1,826,341	1,934,408	23.0	5.9
Non-Metro	861,706	893,888	845,749	874,794	864,984	856,795	0.4	-0.9
SWPPD	24,827	25,669	23,640	21,991	20,904	20,025	-15.8	-4.2
Chase	4,129	4,758	4,381	4,068	3,966	3,924	-3.9	-1.1
Dundy	2,926	2,861	2,582	2,292	2,008	1,693	-31.4	-15.7
Hayes	1,530	1,356	1,222	1,068	967	922	-36.8	-4.7
Hitchcock	4,051	4,079	3,750	3,113	2,908	2,762	-28.2	-5.0
Red Willow	12,191	12,615	11,705	11,450	11,055	10,724	-9.3	-3.0

Source: US Census Bureau, Census of Population, 1970, 1980, 1990, 2000, 2010 and Population Estimates 2019.

Information in Table 18 on the following page indicates significant population loss in all but one of the incorporated areas within the SWPPD Area during the 1970–2019 time period. The City of Imperial, with an increase of 466 residents, 29.3 percent, was the only incorporated place experiencing population growth.

TABLE 18

Incorporated Places Population, 1970–2019
Nebraska, Non-Metro Nebraska & SWPPD Counties

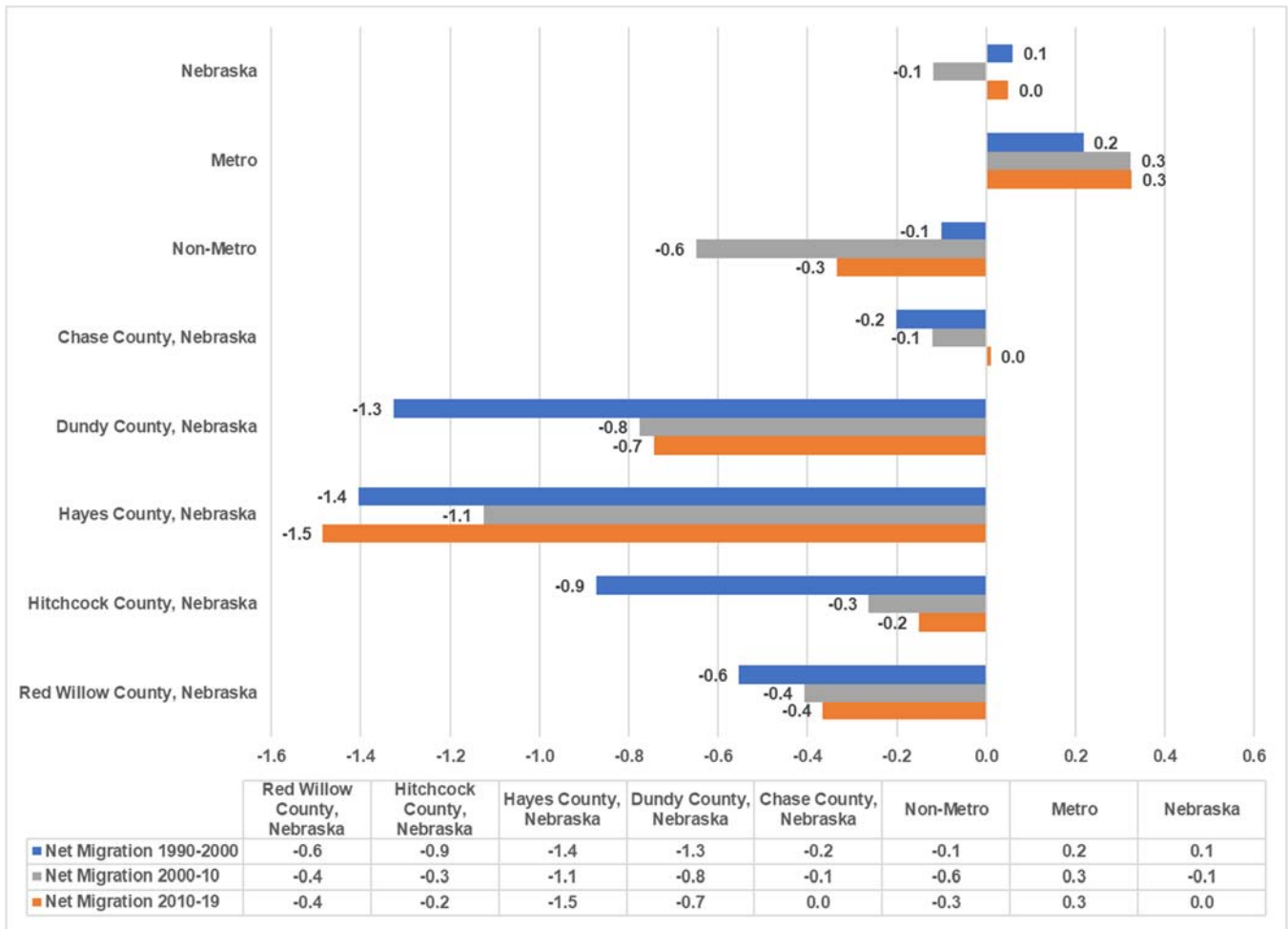
	1970	1980	1990	2000	2010	2019	% Change 1970 - 2010	% Change 2010 - 2019
Chase County								
Imperial	1,589	1,941	2,009	1,982	2,071	2,055	30.3	-0.8
Lamar	30	60	31	19	23	22	-23.3	-4.3
Wauneta	738	746	675	625	577	556	-21.8	-3.6
Dundy County								
Benkelman	1,349	1,235	1,200	1,006	953	790	-29.4	-17.1
Haigler	237	225	225	211	158	140	-33.3	-11.4
Hayes County								
Hamlet	64	74	60	54	57	56	-10.9	-1.8
Hayes Center	237	231	259	240	214	203	-9.7	-5.1
Hitchcock County								
Culbertson	801	767	795	594	595	559	-25.7	-6.1
Palisade	372	401	381	386	351	330	-5.6	-6.0
Stratton	481	499	427	396	343	324	-28.7	-5.5
Trenton	770	796	656	507	560	535	-27.3	-4.5
Red Willow County								
Bartley	283	342	339	355	283	269	0.0	-4.9
Danbury	137	143	109	127	101	95	-26.3	-5.9
Indianola	672	856	672	642	584	550	-13.1	-5.8
Lebanon	118	102	75	70	80	77	-32.2	-3.8
McCook	8,285	8,404	8,142	7,994	7,698	7,560	-7.1	-1.8

Source: US Census Bureau, Census of Population, 1970, 1980, 1990, 2000, 2010 and Population Estimates 2019.

FIGURE 4

Average Annual Net Migration Rates, 1990–2000, 2000–2010 & 2010–2019

Nebraska, Metro, Non-Metro & SWPPD Counties



Source: US Census Bureau, Census of Population, 1980, 1990, 2000, 2010 and Population Estimates 2019.

Figure 4 graphically depicts the migration patterns for Nebraska as a whole, Metro- and Non-Metro Nebraska, and each of the SWPPD Area counties in terms of average annual percentage population change for three periods (1990–2000, 2000–2010 and 2010–2019). Net migration is the change in population after factoring the natural increase for an area (births minus deaths). For the 1990–2000 and 2000–2010 periods, all SWPPD Area counties experienced net out-migration. For the latest 2010–2019 period, Chase County experienced net in migration of less than 0.1 percent per year, while Dundy, Hayes, Hitchcock, and Red Willow Counties continued to experience net out-migration.

TABLE 19

Population Age Distribution, 2019
Nebraska, Non-Metro Nebraska & SWPPD Counties

COUNTY	0 - 14		15 - 24		25 - 44		45 - 64		65 - Older	
	Number	Percent	Number	Percent	Number	Percent	Number	Percent	Number	Percent
Chase	812	20.7	438	11.2	853	21.7	987	25.2	834	21.3
Dundy	251	14.8	189	11.2	319	18.8	491	29.0	443	26.2
Hayes	184	20.0	88	9.5	169	18.3	223	24.2	258	28.0
Hitchcock	508	18.4	264	9.6	574	20.8	685	24.8	731	26.5
Red Willow	1,965	18.3	1,399	13.0	2,404	22.4	2,697	25.1	2,259	21.1
SWPPD Area	3,720	18.6	2,378	11.9	4,319	21.6	5,083	25.4	4,525	22.6
Nebraska	397,176	20.5	268,196	13.9	498,477	25.8	458,101	23.7	312,458	16.2

Source: US Census Bureau, Population Estimates 2019.

Table 19, above, provides information from the U.S. Census Bureau on the population age distribution for Nebraska as a whole, the SWPPD Area, and for each of the counties in the SWPPD Area. Table 20 on the following page shows 5-year Census estimates, which differ from the U.S. Census Bureau's single year population estimates, for median age for the United States, Nebraska, and each of the Counties and incorporated places within the SWPPD Area. These 5-Year estimates are the most current available. Both Tables demonstrate the SWPPD Area population is significantly older than Nebraska's.

As shown in Table 19, all SWPPD Area counties have a much higher percentage of population 65 and older than the Nebraska average of 16.2 percent. Additionally, all SWPPD Counties had a higher percentage of population aged 45 through 64 than the state average of 23.7 percent.

As shown in Table 20 on the following page, the median age for the five SWPPD Area counties ranged from 41.6 to 49.7 years of age and was at least 5 years older than the state median age of 36.6.

Table 20 shows additional median ages as estimated by the American Community Survey for communities within The SWPPD Area and the surrounding counties both as a total and by gender. These are 5-year estimates and differ from the U.S. Census Bureau's single year distributions.

TABLE 20

**Median Age by Location and Gender, SWPPD Counties and
Incorporated Places, 5-Year Estimates, 2014-2018**

US, Nebraska, SWPPD Counties and Incorporated Places

	Total	Male	Female
US	38.2	36.9	39.5
Nebraska	36.6	35.6	37.6
Chase County	42.0	40.7	43.0
Imperial	43.8	44.3	43.2
Lamar	35.7	33.7	37.1
Wauneta	43.8	41.2	46.4
Dundy County	47.5	45.7	49.4
Benkelman	41.9	39.1	42.8
Haigler	40.5	39.7	43.3
Hayes County	49.7	51.2	47.7
Hamlet	61.8	61.4	62.5
Hayes Center	59.5	55.6	61.8
Hitchcock County	45.8	44.0	47.3
Culbertson	43.8	48.1	40.0
Palisade	50.0	49.8	54.2
Stratton	51.3	45.5	53.5
Trenton	51.9	51.8	51.9
Red Willow County	41.6	39.6	43.4
Bartley	50.6	52.7	46.9
Danbury	54.5	50.5	55.5
Indianola	50.4	41.1	53.7
Lebanon	50.4	37.8	52.0
McCook	37.4	36.4	38.6

Source: U.S. Census Bureau, 2014-2018 American Community Survey 5-Year Estimates

RETAIL SALES

Table 21 and Figure 5 show the retail sales (non-motor vehicle) pull factors for each of the SWPPD Area counties for 2019. The pull factor is computed by dividing the per capita taxable, non-motor vehicle (NMV) retail sales for an area by the state average per capita NMV retail sales. A pull factor of one indicates an area has per capita NMV retail sales equal to the state. A value greater than one indicates an area is drawing retail sales from other areas. Conversely, a pull factor with a value less than one indicates the area is losing potential retail activity to other places or, in other words, is experiencing retail sales leakage. This simple calculation does not factor in income levels or purchasing power within an area.

TABLE 21

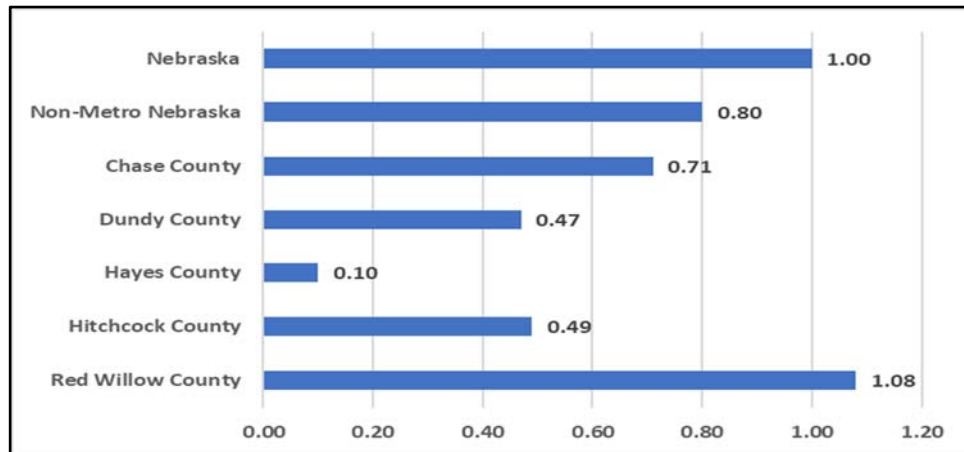
Non-Motor Vehicle (NMV) Retail Sales, Population & Pull Factors, 2019 Nebraska, Non-Metro Nebraska & SWPPD Counties

	Population	Retail Sales (\$1,000)	Per Capita Sales (\$)	Pull Factor
Nebraska	1,967,733	58,547.78	29.80	1.00
Non-Metro Nebraska	1,891,288	47,354.7	25.03	0.84
Chase County	6,571	698.3	106.28	3.57
Dundy County	4,966	436.3	87.87	2.95
Hayes County	55	44.4	80.73	2.71
Hitchcock County	5,951	419.9	70.56	2.37
Red Willow County	43,571	485.48	112.59	3.78

Source: US Census Bureau Population Estimates 2019 and Nebraska Department of Revenue.

FIGURE 5

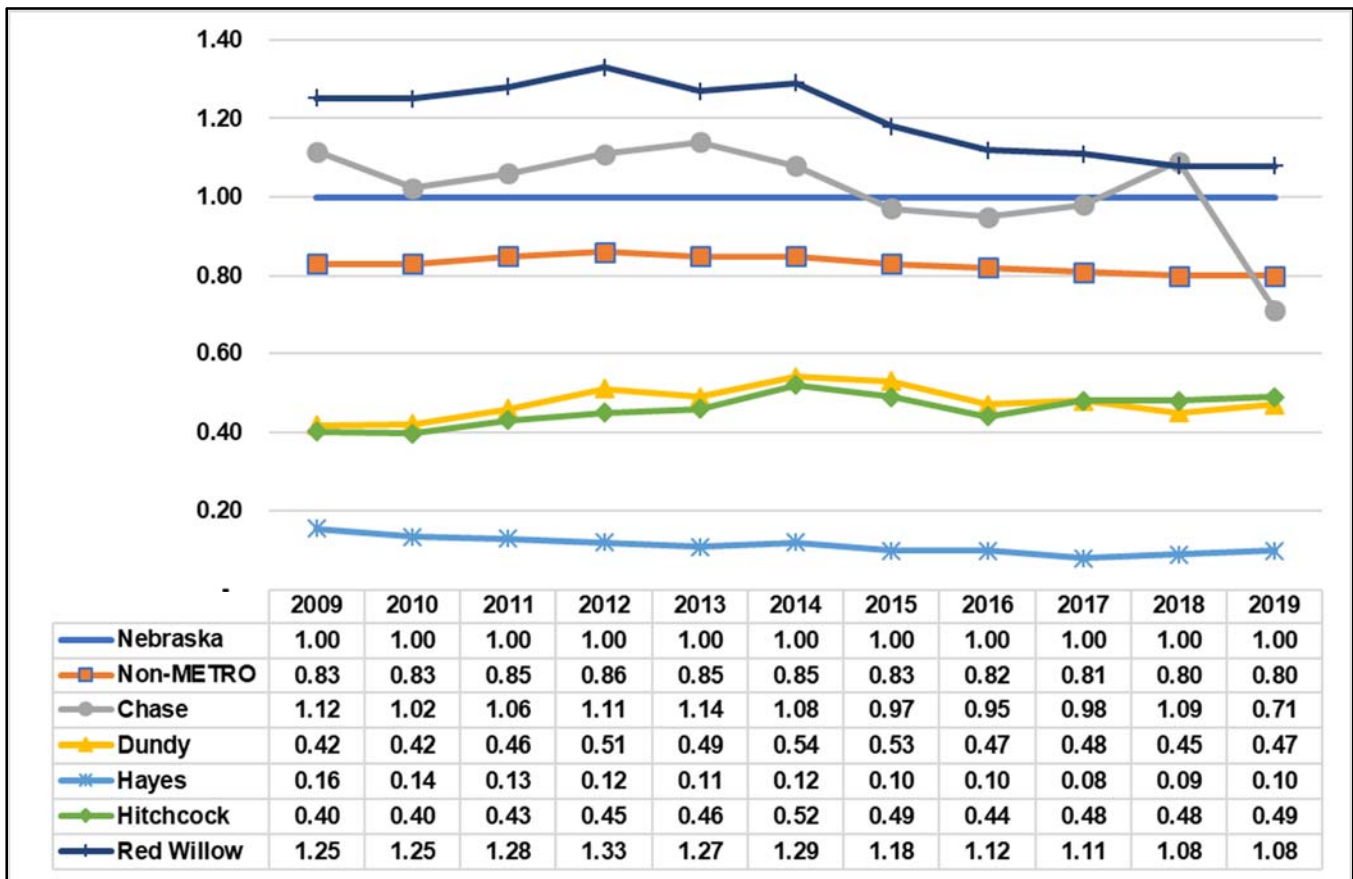
Retail Sales (NMV) Pull Factors, 2019 Nebraska, Non-Metro & SWPPD Counties



Source: US Census Bureau Population Estimates 2019 and Nebraska Department of Revenue.

Reviewing the pull factors at the county level indicates four of the five SWPPD Area counties experience substantial retail leakages. Only Red Willow County has a 2019 pull factor, 1.08, that exceeds the state value of 1.00. The four other counties have pull factors below the 0.80 state average for Non-Metropolitan counties.

FIGURE 6
Retail Sales (NMV) Pull Factors, 2009–2019
Nebraska, Non-Metro & SWPPD Counties



Source: US Census Bureau Population Estimates 2019 and Nebraska Department of Revenue.

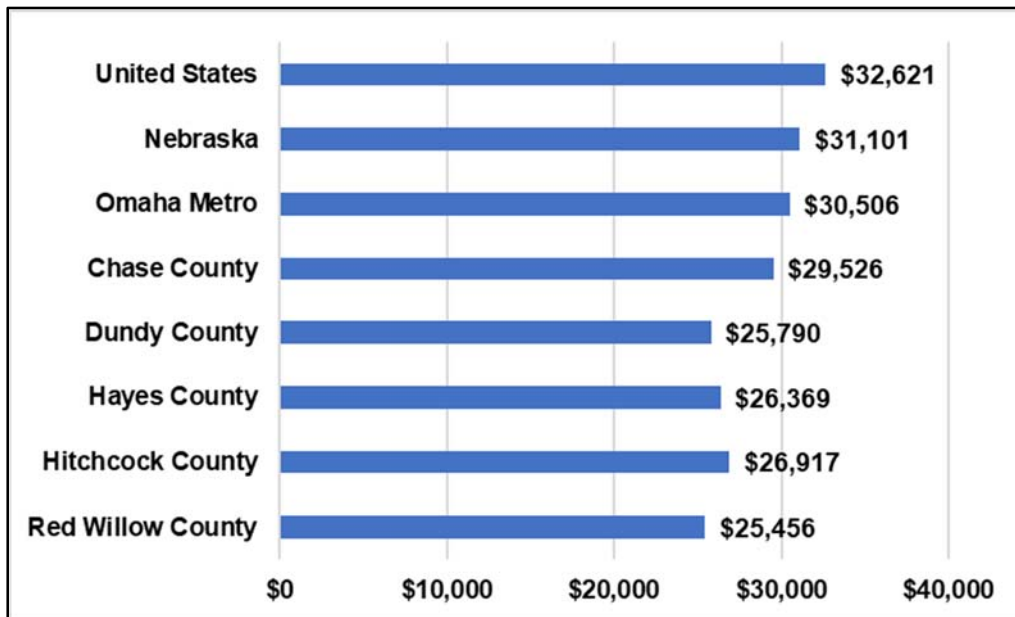
Figure 6 above shows the pull factors for Dundy, Hayes and Hitchcock counties remained well below both the Nebraska and Non-Metropolitan levels during the 11-year period 2009–2019. The Red Willow Pull factor was above the state average throughout the period but has seen a steady decline since 2014. The pull factor for Chase County has shifted above and below the state average throughout the 2009–2019 period but experienced a dramatic drop in 2019.

PER CAPITA PERSONAL INCOME

Figure 7 displays per capita personal income levels for the US, Nebraska, the Omaha Metropolitan Statistical Area and the SWPPD Area Counties. Data in Figure 7 show per capita personal income in 2019 for the SWPPD Area counties ranged from an estimated low of \$25,456 (Red Willow County) to an estimated high of \$29,526 (Chase County) compared to \$31,101 for Nebraska as a whole.

FIGURE 7

5-Year Per Capita Personal Income, 2014-2018 United States, Nebraska & SWPPD Counties



Source: U.S. Census Bureau, 2014-2018 American Community Survey 5-Year Estimates

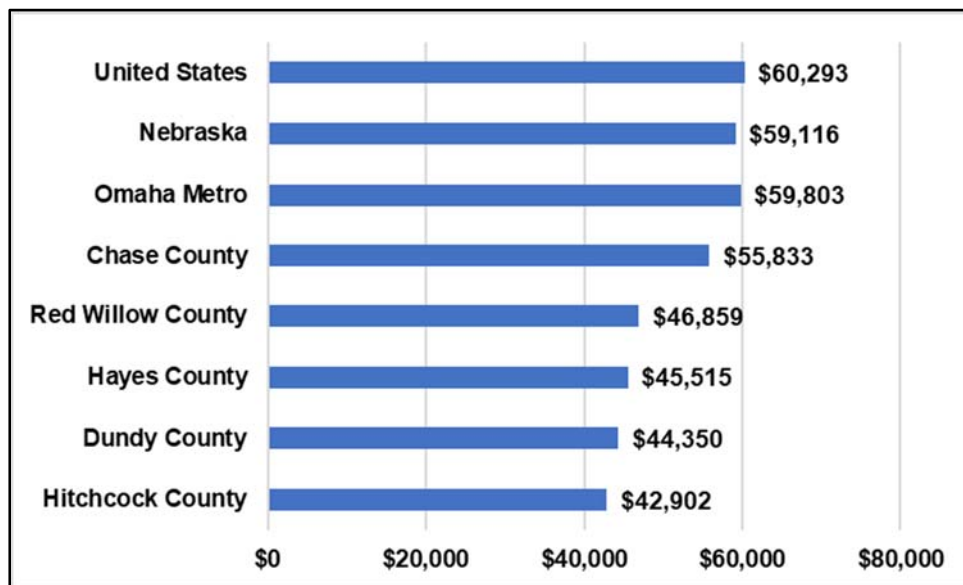
MEDIAN HOUSEHOLD INCOME

Median household income provides a different perspective of income levels than does median family or per capita income. Family income is defined as having two or more related people in a household. Household income (used in this study) can consist of multiple family members or can be represented by a single person.

Estimated median household income for each of the counties in the SWPPD Area is shown in Figure 8 below along with estimates for the United States, Nebraska, and the Omaha Metropolitan Statistical Area. Data in Figure 8 show median household income in 2019 for the SWPPD Area counties ranged from an estimated low of \$42,902 (Hitchcock County) to an estimated high of \$55,833 (Chase County) compared to \$59,116 for Nebraska.

FIGURE 8

5-Year Median Household Income, 2014-2018 **United States, Nebraska & SWPPD Counties**



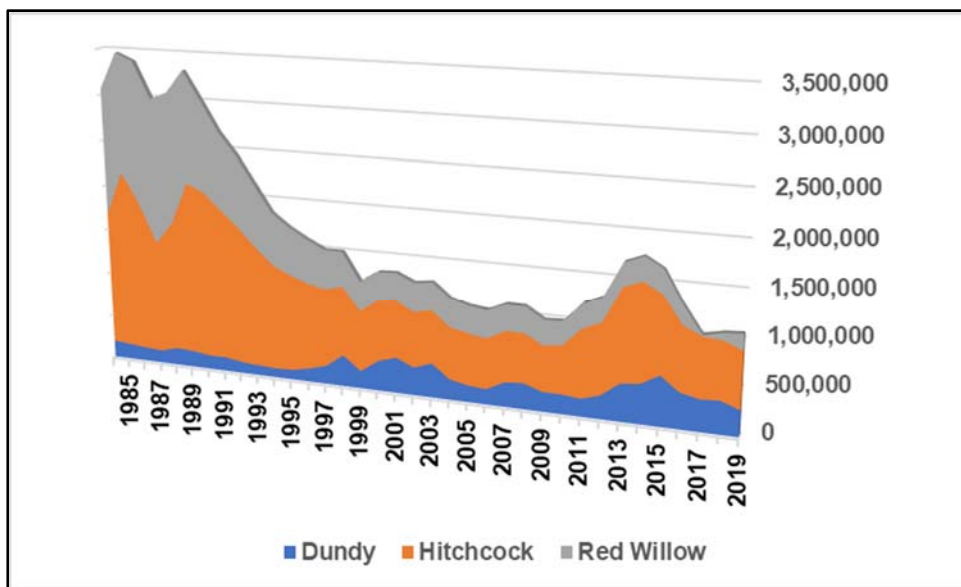
Source: U.S. Census Bureau, 2014-2018 American Community Survey 5-Year Estimates

CRUDE OIL & NATURAL GAS PRODUCTION

In 2010, three of the top four oil producing counties in Nebraska were located within the SWPPD Area. Hitchcock County (524,737 barrels) was Nebraska's second highest oil producing county behind Kimball County (623,579 barrels). Red Willow, County (257,531 barrels) ranked third in oil production in Nebraska, followed by Dundy, County (213,374 barrels). By 2014, oil production in the three SWPPD Area counties had increased 76.3 percent to 1,755,430. By 2017 production had returned to just above 2010 levels. In 2019, oil production was 7.1 percent higher than in 2010, 1,066,421 barrels.

FIGURE 9

Crude Oil Production, Barrels, 1984–2019 Dundy, Hitchcock & Red Willow Counties

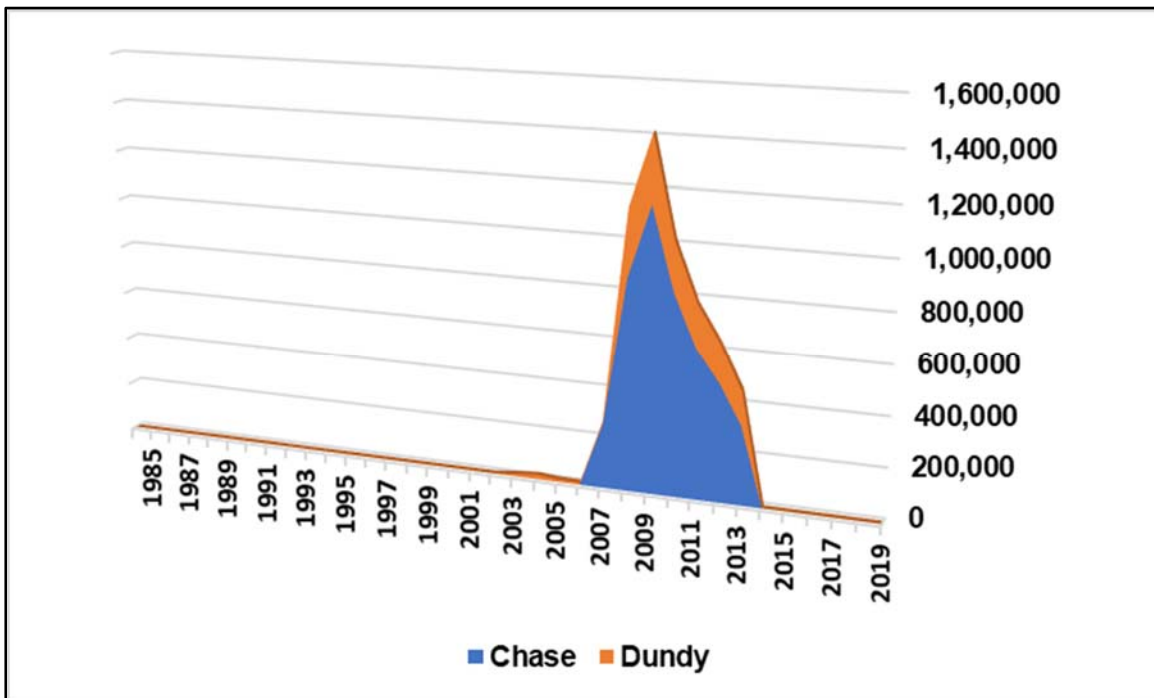


Source: Nebraska Oil and Gas Conservation Commission.

As shown in Figure 10, counties in the SWPPD Area have not been major producers of natural gas. While there was some exploration and production beginning around 2005, low prices and the current large volumes of reserves make additional exploration activities uneconomical and production within the area ceased in 2014.

FIGURE 10

Natural Gas Production, Thousand Cubic Feet (MCF), 1984–2019
Chase and Dundy Counties



Source: Nebraska Oil and Gas Conservation Commission.