

FOR LEASE

WILSONVILLE BUSINESS CENTER

BUILDING 9, SUITE 910

27501 SW 95th Ave | Wilsonville, OR 97070



www.cbre.us/portland

LBA Logistics 

CBRE

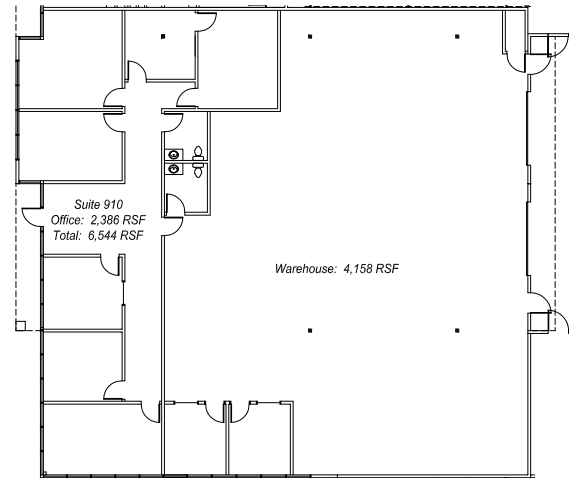
FOR LEASE

WILSONVILLE BUSINESS CENTER

BUILDING 9
27501 SW 95TH AVE
Wilsonville, OR 97070

BUILDING 9 SUITE 910

- + 6,544 SF footprint
- + 2,386 SF office
- + 2 Grade doors
- + NNN/SF/Mo \$0.30
- + Call for rates



CONTACT US

ANDY KANGAS

First Vice President
+1 503 221 4874
andy.kangas@cbre.com
Licensed in OR

ADAM KIMBROUGH

Associate
+1 503 221 4819
adam.kimbrough@cbre.com
Licensed in OR

HAAKON WEINSTEIN

Associate
+1 503 221 4834
haakon.weinstein@cbre.com
Licensed in OR

© 2020 CBRE, Inc. All rights reserved. This information has been obtained from sources believed reliable, but has not been verified for accuracy or completeness. You should conduct a careful, independent investigation of the property and verify all information. Any reliance on this information is solely at your own risk. CBRE and the CBRE logo are service marks of CBRE, Inc. All other marks displayed on this document are the property of their respective owners. Photos herein are the property of their respective owners. Use of these images without the express written consent of the owner is prohibited.

FOR LEASE

WILSONVILLE BUSINESS CENTER

BUILDING 9, SUITE 980

27501 SW 95th Ave | Wilsonville, OR 97070



www.cbre.us/portland

LBA Logistics 

CBRE

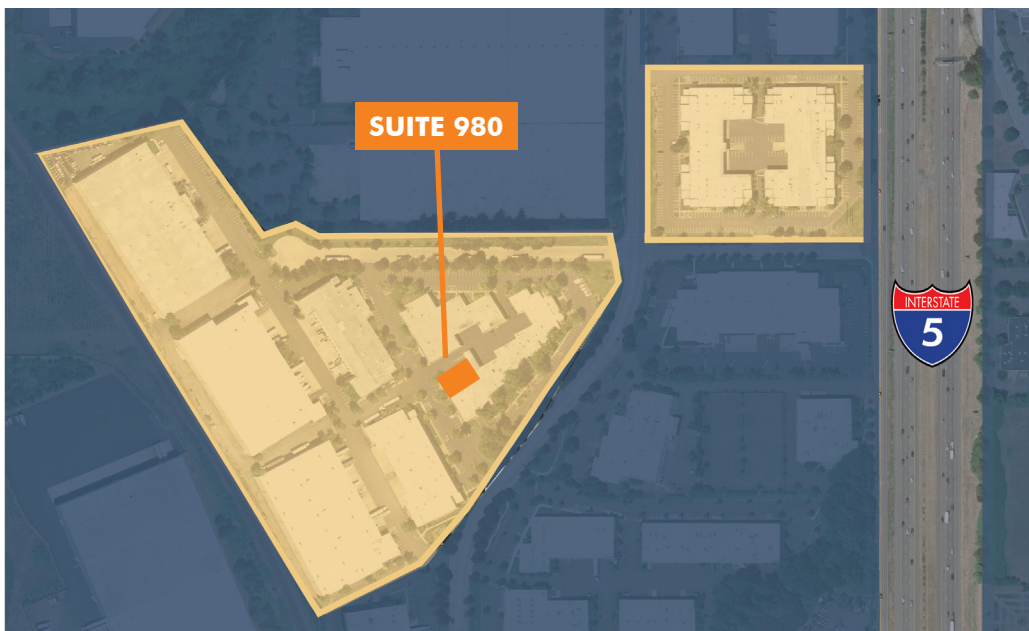
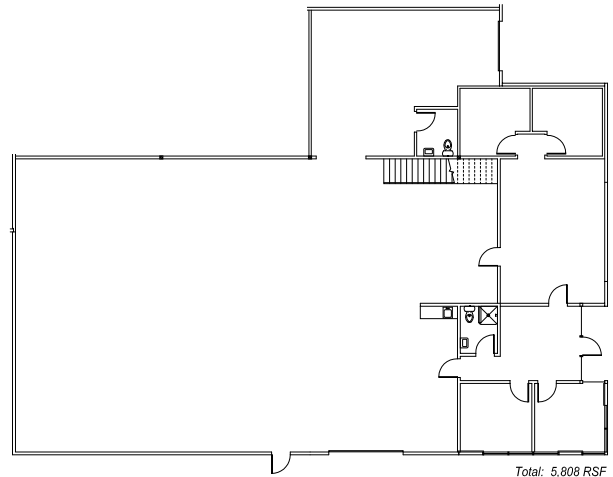
FOR LEASE WILSONVILLE BUSINESS CENTER

+ NNN/SF/Mo \$0.30

BUILDING 9
27501 SW 95TH AVE
Wilsonville, OR 97070

BUILDING 9 SUITE 980

- + 5,808 SF Shell
- + 1,245 SF Office
- + Mezzanine available
- + 1 Grade door / 1 Dock door
- + NNN/SF/Mo \$0.30
- + Call for rates



CONTACT US

ANDY KANGAS

First Vice President
+1 503 221 4874
andy.kangas@cbre.com
Licensed in OR

ADAM KIMBROUGH

Associate
+1 503 221 4819
adam.kimbrough@cbre.com
Licensed in OR

HAAKON WEINSTEIN

Associate
+1 503 221 4834
haakon.weinstein@cbre.com
Licensed in OR

© 2020 CBRE, Inc. All rights reserved. This information has been obtained from sources believed reliable, but has not been verified for accuracy or completeness. You should conduct a careful, independent investigation of the property and verify all information. Any reliance on this information is solely at your own risk. CBRE and the CBRE logo are service marks of CBRE, Inc. All other marks displayed on this document are the property of their respective owners. Photos herein are the property of their respective owners. Use of these images without the express written consent of the owner is prohibited.

www.cbre.us/portland

LBA Logistics

CBRE

FOR LEASE

WILSONVILLE BUSINESS CENTER

BUILDING 30, SUITE 3044

27350 SW 95th Ave | Wilsonville, OR 97070



www.cbre.us/portland

LBA Logistics 

CBRE

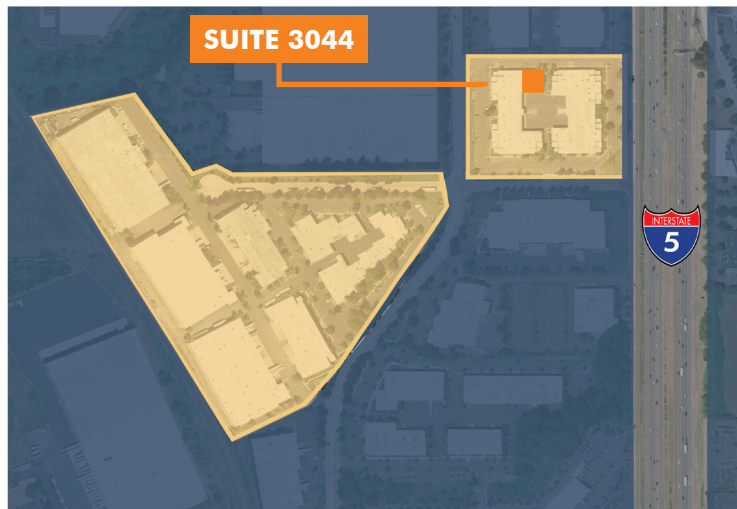
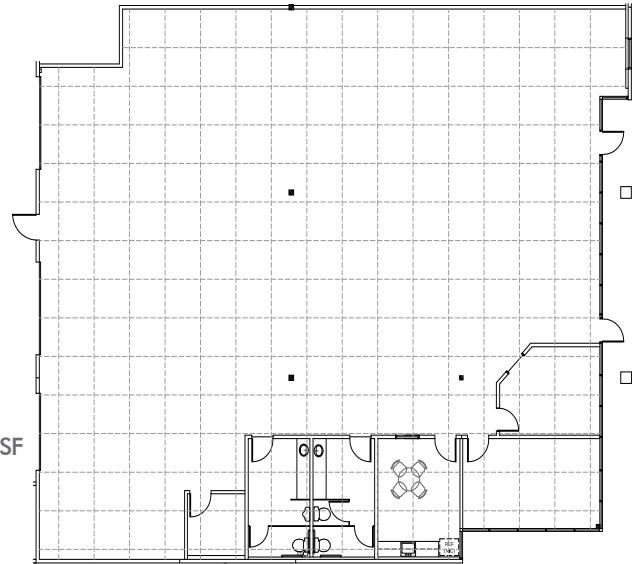
FOR LEASE WILSONVILLE BUSINESS CENTER

BUILDING 30
27350 SW 95TH AVE
Wilsonville, OR 97070

BUILDING 30 SUITE 3044

- + 6,349 SF
- + Build to Suit Office
(~1,000 SF existing office)
- + 16' Clear Height
- + 2 Grade Doors
- + Shared Common Docks
- + Easy Freeway Access to I-5
- + NNNs: \$0.30/SF/MO
- + Call for Rates

Total: 6,349 RSF



CONTACT US

ANDY KANGAS

First Vice President
+1 503 221 4874
andy.kangas@cbre.com
Licensed in OR

ADAM KIMBROUGH

Associate
+1 503 221 4819
adam.kimbrough@cbre.com
Licensed in OR

HAAKON WEINSTEIN

Associate
+1 503 221 4834
haakon.weinstein@cbre.com
Licensed in OR

© 2020 CBRE, Inc. All rights reserved. This information has been obtained from sources believed reliable, but has not been verified for accuracy or completeness. You should conduct a careful, independent investigation of the property and verify all information. Any reliance on this information is solely at your own risk. CBRE and the CBRE logo are service marks of CBRE, Inc. All other marks displayed on this document are the property of their respective owners. Photos herein are the property of their respective owners. Use of these images without the express written consent of the owner is prohibited.

www.cbre.us/portland

LBA Logistics 

CBRE

FOR LEASE

WILSONVILLE BUSINESS CENTER

BUILDING 30 | SUITE 3032

27350 SW 95th Ave | Wilsonville, OR 97070



www.cbre.us/portland

LBA Logistics 

CBRE

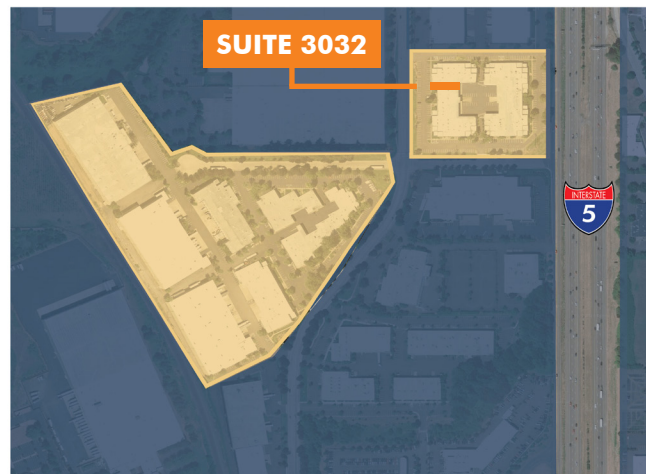
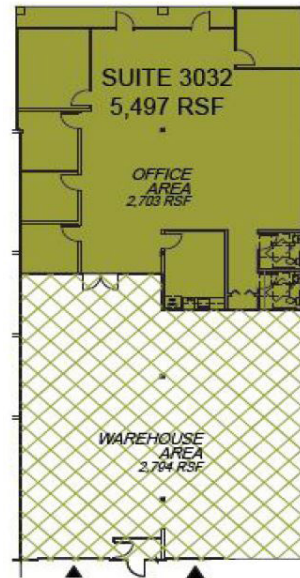
FOR LEASE

WILSONVILLE BUSINESS CENTER

BUILDING 30
27350 SW 95TH AVE
Wilsonville, OR 97070

BUILDING 30 SUITE 3032

- + 5,497 SF
- + 2,703 SF Office
- + 16' Clear Height
- + 2 Grade Doors
- + Shared Common Docks
- + Easy Freeway Access to I-5
- + NNNs: \$0.30/SF/MO
- + Call for Rates



CONTACT US

ANDY KANGAS

First Vice President
+1 503 221 4874
andy.kangas@cbre.com
Licensed in OR

ADAM KIMBROUGH

Associate
+1 503 221 4819
adam.kimbrough@cbre.com
Licensed in OR

HAAKON WEINSTEIN

Associate
+1 503 221 4834
haakon.weinstein@cbre.com
Licensed in OR

© 2020 CBRE, Inc. All rights reserved. This information has been obtained from sources believed reliable, but has not been verified for accuracy or completeness. You should conduct a careful, independent investigation of the property and verify all information. Any reliance on this information is solely at your own risk. CBRE and the CBRE logo are service marks of CBRE, Inc. All other marks displayed on this document are the property of their respective owners. Photos herein are the property of their respective owners. Use of these images without the express written consent of the owner is prohibited.

www.cbre.us/portland

LBA Logistics 

CBRE

FOR LEASE

WILSONVILLE BUSINESS CENTER

BUILDING 30, SUITE 3010

27350 SW 95th Ave | Wilsonville, OR 97070



www.cbre.us/portland

LBA Logistics 

CBRE

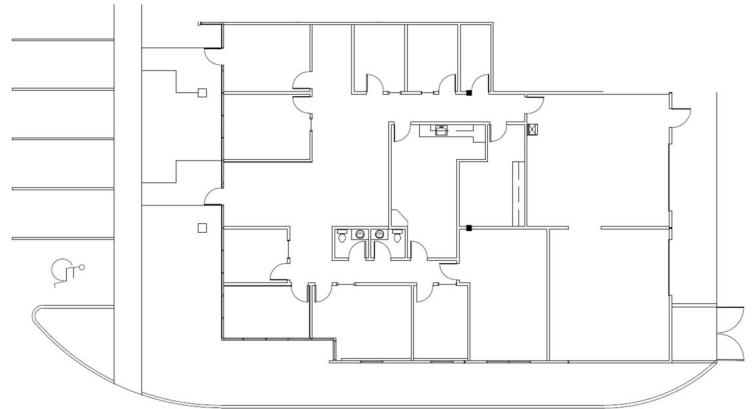
FOR LEASE WILSONVILLE BUSINESS CENTER

BUILDING 30
27350 SW 95TH AVE
Wilsonville, OR 97070



BUILDING 30 SUITE 3010

- + 4,913 SF Shell
- + 3,184 SF Office
- + 2 Grade doors
- + NNNs: \$0.30/SF/MO
- + Call for rates



CONTACT US

ANDY KANGAS

First Vice President
+1 503 221 4874
andy.kangas@cbre.com
Licensed in OR

ADAM KIMBROUGH

Associate
+1 503 221 4819
adam.kimbrough@cbre.com
Licensed in OR

HAAKON WEINSTEIN

Associate
+1 503 221 4834
haakon.weinstein@cbre.com
Licensed in OR

© 2020 CBRE, Inc. All rights reserved. This information has been obtained from sources believed reliable, but has not been verified for accuracy or completeness. You should conduct a careful, independent investigation of the property and verify all information. Any reliance on this information is solely at your own risk. CBRE and the CBRE logo are service marks of CBRE, Inc. All other marks displayed on this document are the property of their respective owners. Photos herein are the property of their respective owners. Use of these images without the express written consent of the owner is prohibited.

www.cbre.us/portland

LBALogistics

CBRE

FOR LEASE

WILSONVILLE BUSINESS CENTER

BUILDING 31 | SUITES 3114 & 3116

9025 SW Hillman Ct | Wilsonville, OR 97070

4,505 SF to 9,326 SF AVAILABLE



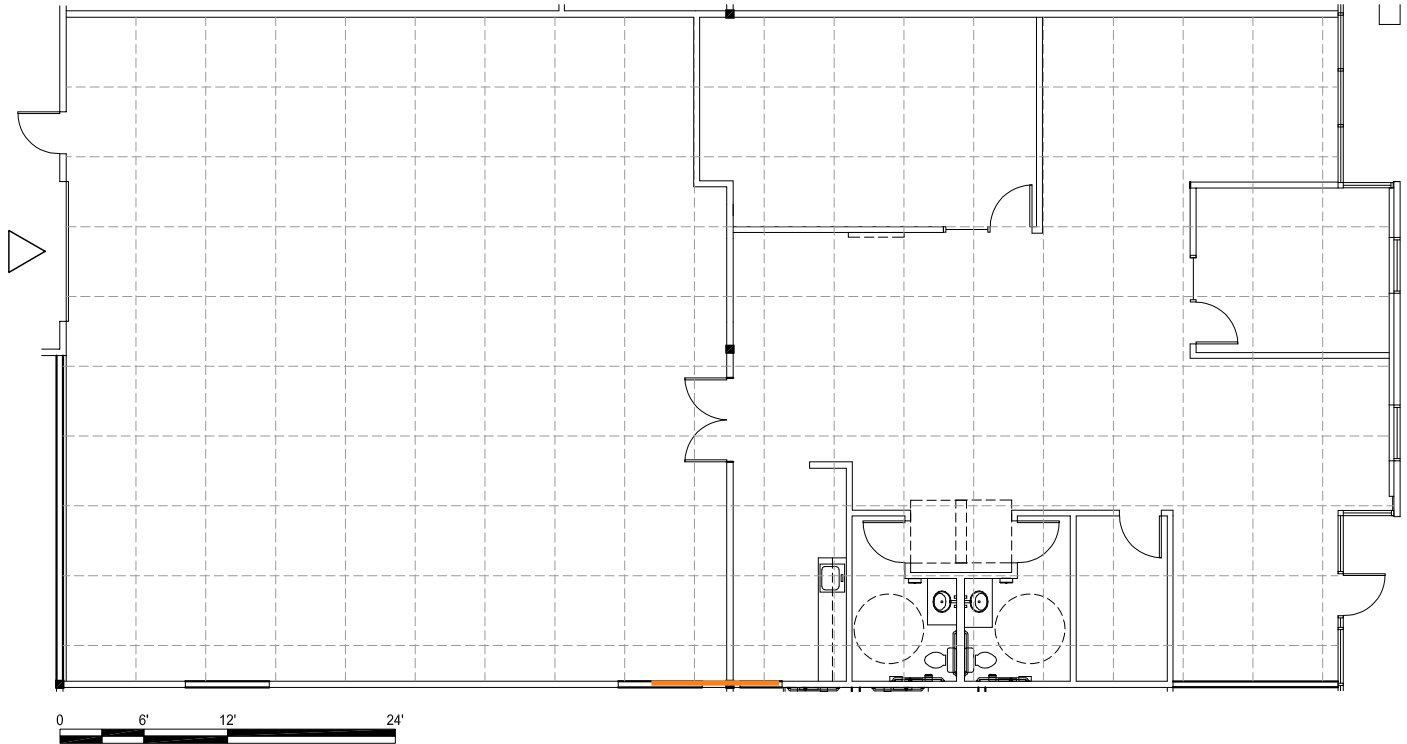
www.cbre.us/portland

LBA Logistics 

CBRE

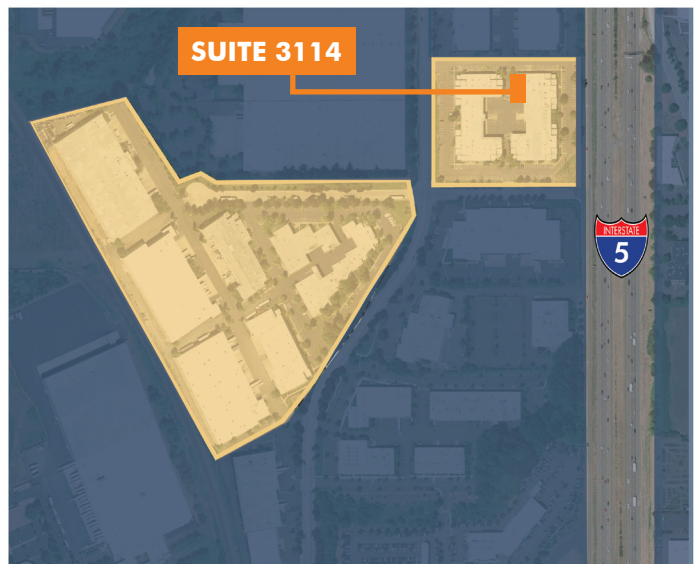
FOR LEASE
WILSONVILLE BUSINESS CENTER

BUILDING 31
9025 SW HILLMAN CT
Wilsonville, OR 97070



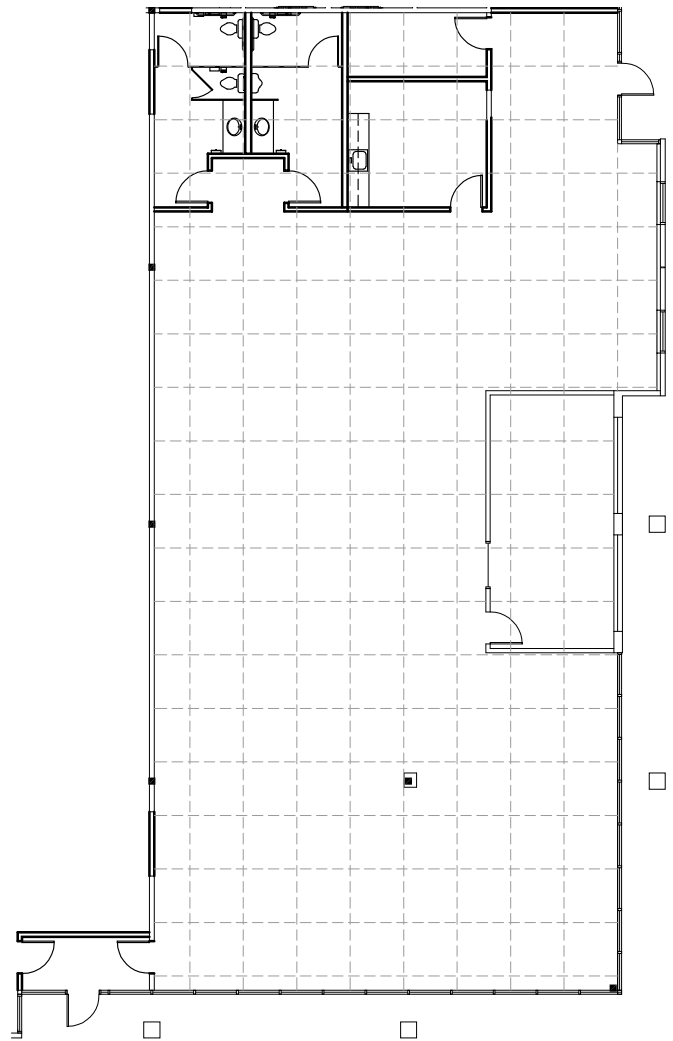
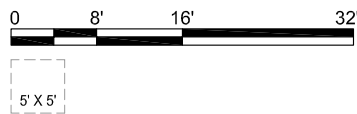
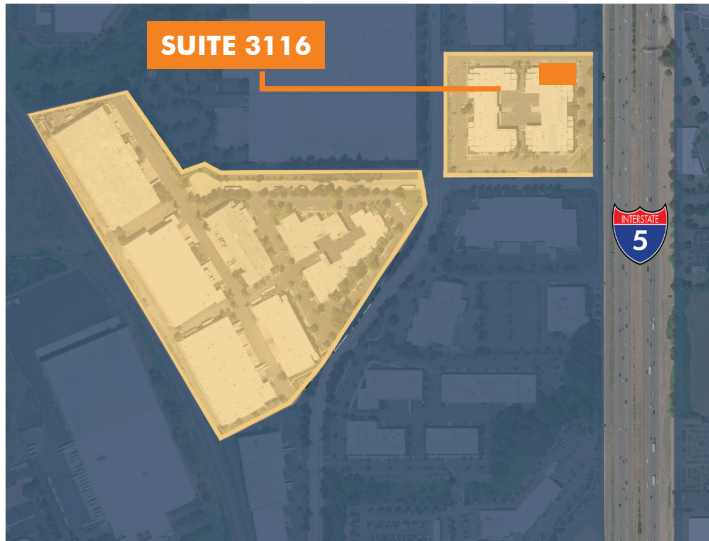
SUITE 3114

- + 4,821 SF Total
- + 2,346 SF Office
- + 16' Clear Height
- + 1 Grade Door
- + Shared Common Docks
- + NNNs: \$0.31/SF/MO
- + Call for Rates



FOR LEASE
WILSONVILLE BUSINESS CENTER

BUILDING 31
9025 SW HILLMAN CT
Wilsonville, OR 97070



SUITE 3116

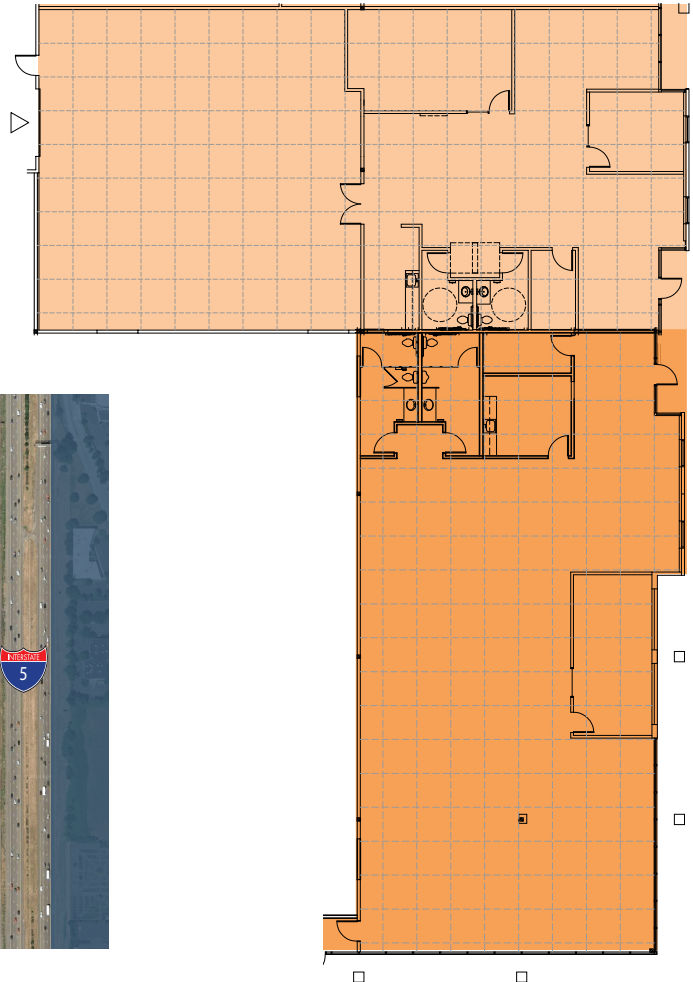
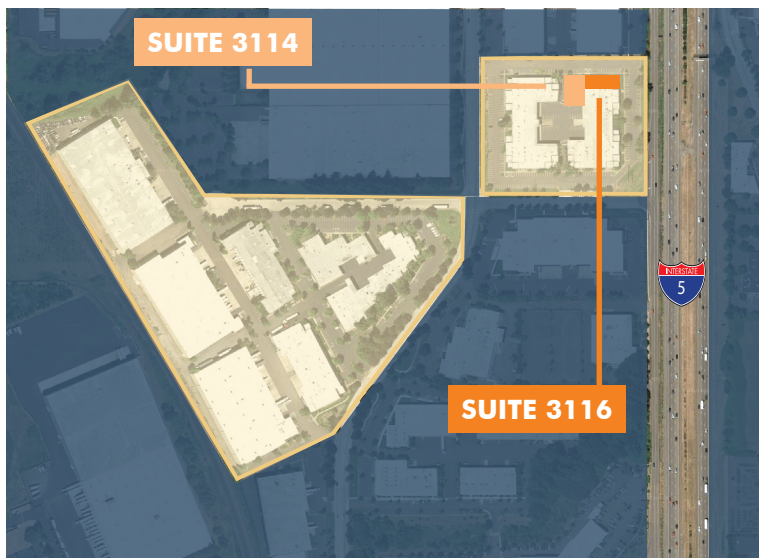
- + 4,505 SF Office
- + Great for Flex, Office, or Medical
- + Roll up door potential
- + Corner Suite
- + NNN/SF/MO \$0.31
- + Call for Rates

FOR LEASE WILSONVILLE BUSINESS CENTER

BUILDING 31
9025 SW HILLMAN CT
Wilsonville, OR 97070

COMBINED CONFIGURATION

- + Suites 3114 + 3116
- + 9,326 SF Total
- + 6,851 SF Office



CONTACT US

ANDY KANGAS

First Vice President
+1 503 221 4874
andy.kangas@cbre.com
Licensed in OR

ADAM KIMBROUGH

Associate
+1 503 221 4819
adam.kimbrough@cbre.com
Licensed in OR

HAAKON WEINSTEIN

Associate
+1 503 221 4834
haakon.weinstein@cbre.com
Licensed in OR

© 2020 CBRE, Inc. All rights reserved. This information has been obtained from sources believed reliable, but has not been verified for accuracy or completeness. You should conduct a careful, independent investigation of the property and verify all information. Any reliance on this information is solely at your own risk. CBRE and the CBRE logo are service marks of CBRE, Inc. All other marks displayed on this document are the property of their respective owners. Photos herein are the property of their respective owners. Use of these images without the express written consent of the owner is prohibited.

FOR LEASE

WILSONVILLE BUSINESS CENTER

BUILDING 31 | SUITES 3122 & 3126

9025 SW Hillman Ct | Wilsonville, OR 97070

5,345 SF to 13,689 SF AVAILABLE



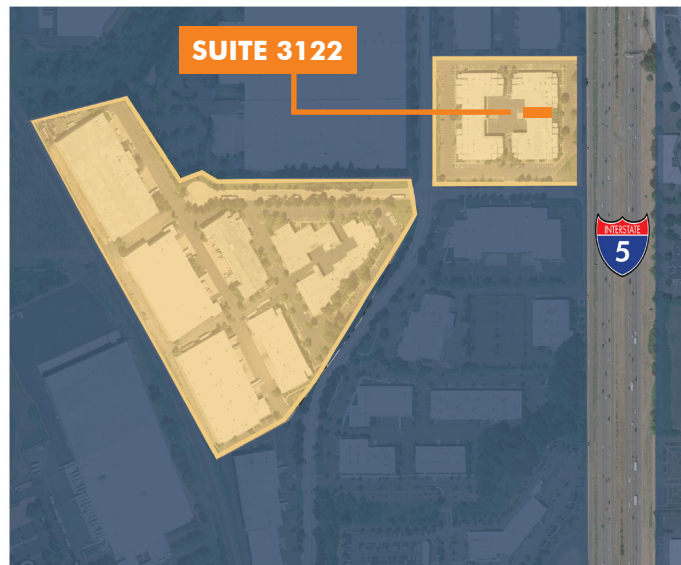
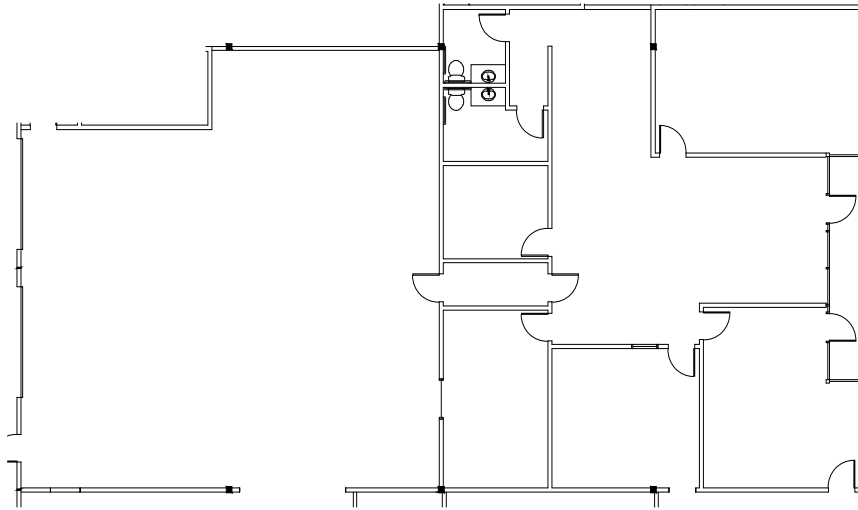
www.cbre.us/portland

LBA Logistics 

CBRE

FOR LEASE
WILSONVILLE BUSINESS CENTER

BUILDING 31
9025 SW HILLMAN CT
Wilsonville, OR 97070

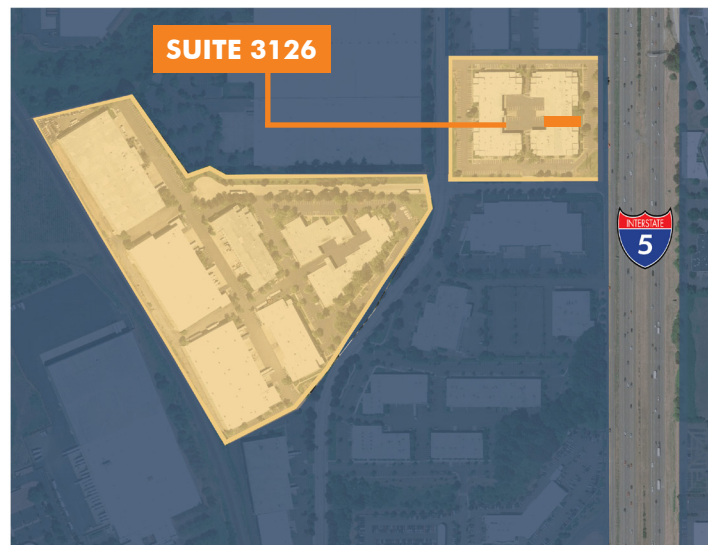
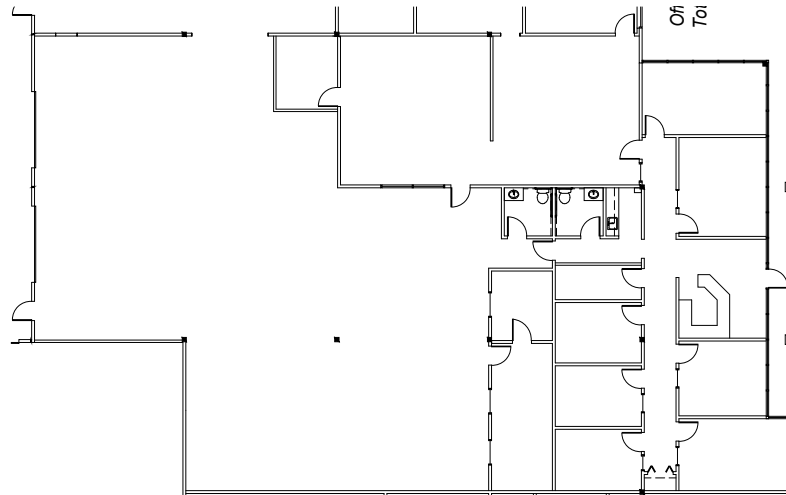


SUITE 3122

- + 5,345 SF Total
- + 2,529 SF Office
- + 18' Clear Height
- + 2 Grade Level Doors
- + Shared Common Docks
- + NNNs: \$0.31/SF/MO
- + Call for Rates

FOR LEASE
WILSONVILLE BUSINESS CENTER

BUILDING 31
9025 SW HILLMAN CT
Wilsonville, OR 97070



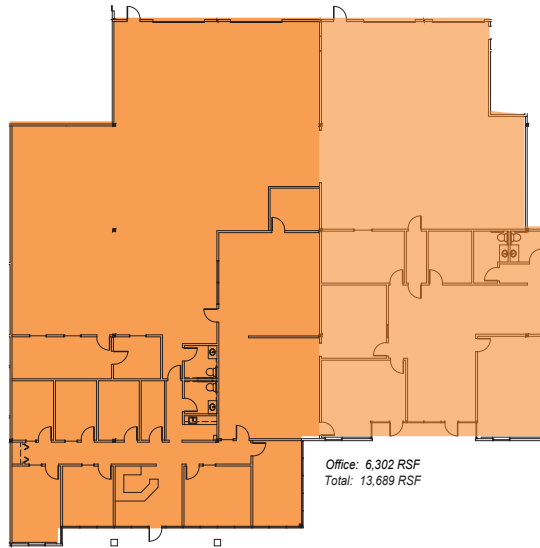
SUITE 3126

- + 8,344 SF
- + 3,927 SF Office
- + 16' Clear Height
- + Climate Controlled Warehouse
- + 2 Grade Level Doors
- + Shared Common Docks
- + NNNs: \$0.31/SF/MO
- + Call for Rates

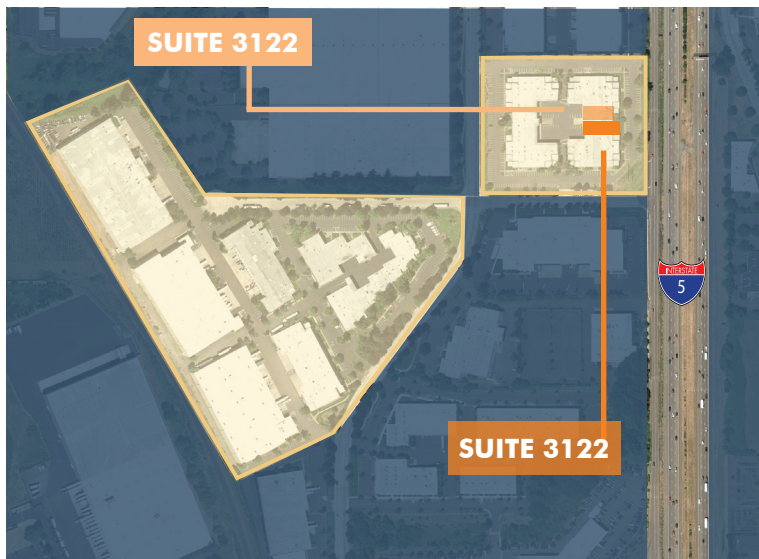
FOR LEASE WILSONVILLE BUSINESS CENTER

BUILDING 31
9025 SW HILLMAN CT
Wilsonville, OR 97070

SUITE 3122



SUITE 3126



COMBINED CONFIGURATION

- + Suites 3122 + 3126
- + 13,689 SF Total
- + 6,456 SF Office
- + 4 Grade Level Doors
- + NNNs: \$0.31/SF/MO
- + Call for Rates

CONTACT US

ANDY KANGAS

First Vice President
+1 503 221 4874
andy.kangas@cbre.com
Licensed in OR

ADAM KIMBROUGH

Associate
+1 503 221 4819
adam.kimbrough@cbre.com
Licensed in OR

HAAKON WEINSTEIN

Associate
+1 503 221 4834
haakon.weinstein@cbre.com
Licensed in OR

© 2020 CBRE, Inc. All rights reserved. This information has been obtained from sources believed reliable, but has not been verified for accuracy or completeness. You should conduct a careful, independent investigation of the property and verify all information. Any reliance on this information is solely at your own risk. CBRE and the CBRE logo are service marks of CBRE, Inc. All other marks displayed on this document are the property of their respective owners. Photos herein are the property of their respective owners. Use of these images without the express written consent of the owner is prohibited.

www.cbre.us/portland

LBA Logistics 

CBRE